



**2005 - 2007 FORD F-250/350 4wd  
FTS22052 COILOVER CONVERSION**

<b>FTS22052BK</b>		
<b>Qua</b>	<b>Part #</b>	<b>Description</b>
1	FT30151BK	Driver Hoop
1	FT30152BK	Passenger Hoop
1	FT30452BK	Driver Lower Mount
1	FT30453BK	Passenger Lower Mnt
1	FT30191	Hardware Kit
2	FT30197	Upper Limit Strap Brkt
2	FT30198	Lower Limit Strap Brkt
2	FT30192BK	Limited Straps w/ Logo
2	FT22052i	Instruction Sheet

<b>FT30191 Hardware Kit</b>		
<b>Qua</b>	<b>Description</b>	<b>Location</b>
14	1/2"-13 x 1 1/2" Bolt	Hoop To Frame
6	1/2"-13 x 1 3/4" Bolt	Limit Strap Bracket
24	1/2"-13 C-Lock Nut	
52	1/2"SAE Flat Washer	
4	7/16"-14 x 1 3/4" Bolt	Hoop To Frame (top)
4	7/16"-14 C-Lock Nut	
8	7/16 SAE Flat Washer	
8	1/4"-20 X 1" Hex Bolt	All Brake Line to Hp
8	1/4"-20 Nyloc Nut	
16	1/4" SAE Flat Washer	
2	14mm-2.0 x 30mm Bolt	Lower Mount to Axle
2	14mm Flat Washer	
2	18mm-2.5 x 130mm Bolt	Uppr Axle Pivot Bolt
2	18mm-2.5 C-Lock Nut	
4	18mm Flat Washer	
1	Lock Tight	

**TOOL LIST:**

- Floor jack
- Jack stands
- Assorted metric & S.A.E. wrenches & sockets
- Air Hammer
- Die Grinder with cutoff wheel
- Drill with 7/16" & 1/2" bit

**CHECK ALL PARTS INCLUDED IN THIS KIT TO THE PARTS LIST ABOVE BEFORE BEGINNING INSTALLATION OF THE KIT.**

**FABTECH RECOMMENDS FTS92001 HYDRAULIC BUMP STOP KIT USE ON TRUCKS THAT WILL HAVE HEAVY OFF ROAD USE.**

**THIS KIT MUST BE INSTALLED WITH FABTECH DIRT LOGIC COILOVER SHOCKS NOT INCLUDED IN THIS BOX KIT.**

**THIS KIT MUST BE USED WITH FABTECHS 6/8" RADIUS ARM SYSTEM OR 6/8" 4 LINK SYSTEM ONLY.**

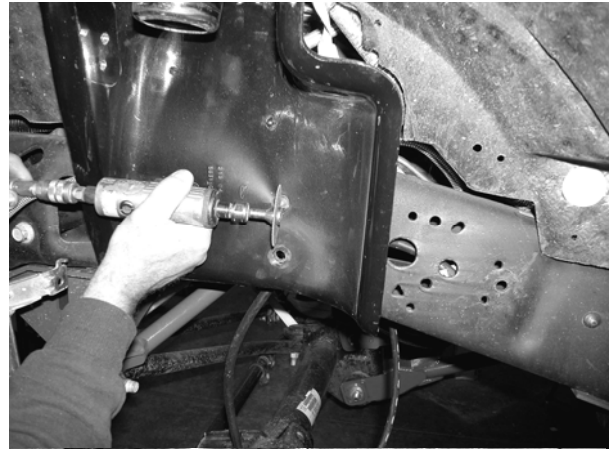
**NOTE: IF YOU HAVE THE FABTECH DUAL SHOCK KIT FTS52002 ON THE VEHICLE, YOU WILL NEED SEVERAL OF THE PARTS THAT WERE DISCARDED DURING THE INSTALL OF THE DUAL SHOCK KIT. THE FORD PARTS REQUIRED ARE THE FACTORY BRAKE LINE BRACKETS AND THE FABTECH PARTS REQUIRED ARE THE SWAY BAR DROP BRACKETS WITH HARDWARE AND SWAY BAR END LINKS WITH THE BUSHINGS AND HARDWARE.**

**DO NOT INSTALL THIS KIT ON MODELS WITH DIGITAL CLIMATE CONTROL.**

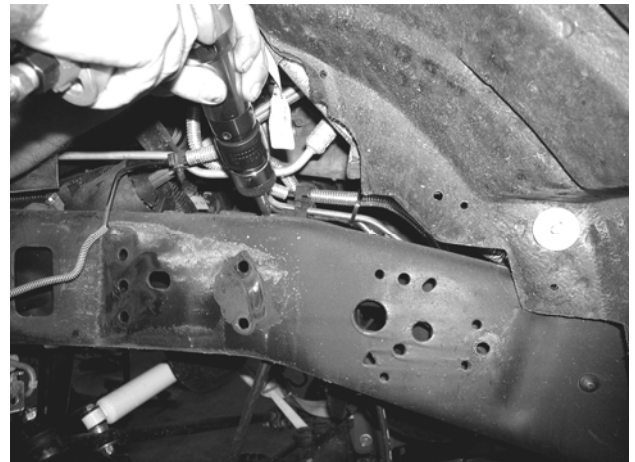
SPANNER WRENCH IS NOT INCLUDED IN THIS KIT,IF NEEDED ORDER FTS89905.

## INSTRUCTIONS:

1. Disconnect the negative terminal on the battery. Jack up the front end of the truck and support the front axle with jack stands. **NEVER WORK UNDER AN UNSUPPORTED VEHICLE.** Remove the front tires.
2. Support the front axle with a floor jack. Raise the floor jack approx. 1".
3. Working on both side of the truck, remove the front shocks and discard. Save the factory lower shock bolt and nut tab. Disconnect the front sway bar end links from the axle mount and save the hardware.
4. Remove the brake line bracket from the factory coil bucket and discard hardware. If a Fabtech kit has already been installed remove the brake line drop bracket supplied with that kit and discard. Remove the brake line and ABS line mounts from the lower coil perch and discard the hardware.
5. Remove the trac bar bracket from the driver side of the frame and save the hardware.
6. Lower the floor jack supporting the axle down until the coil springs are free of tension. Remove the coil springs and discard.
7. Locate bump stop on the bottom of the frame below the coil bucket and remove. If you have a Fabtech kit that has already been installed on the truck, remove the bump stop along with the drop bracket and discard. Fabtech recommends running the FTS92001 optional Hydraulic Bump Stop Kit. The installation of the coil over kit does not require the installation of a bump stop.
8. Working from the driver's of the truck, using a die grinder with a cut off wheel cut all the heads of the rivet in a cross pattern that attach the factory coil bucket to the frame. Using an air chisel, remove the heads of the rivets and pry the coil bucket free from the frame. With the bucket removed from the frame use a hammer and center punch and knock the rest of the rivets out of the holes in the frame. SEE PHOTOS BELOW AND IN NEXT COLUMN.



9. Once the factory bucket is removed from the frame, you will need to remove an additional two rivets from the top of the frame using the same method as above. SEE PHOTO BELOW.



10. Using a drill with a 1/2" bit, drill all the holes on the outside, top, and bottom of the frame that the hoop will be mounting to. SEE PHOTO BELOW.



11. Locate the factory lower coil perch on the axle and remove. Discard the perch and hardware.

12. Using a sharp razor blade cut a 6" x 4" rectangle in the plastic inner fender well as shown below. When cutting the inner fender well do not cut the heat shield felt on the backside of the inner fender well. SEE PHOTOS BELOW.



Passenger Side Cut

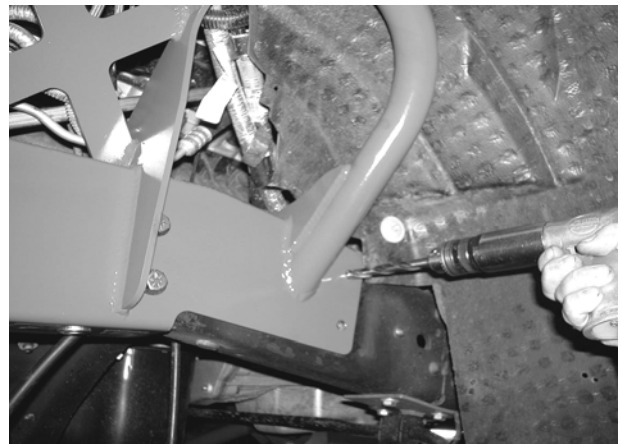


Driver Side Uncut But Marked

13. Repeat steps eight through twelve on the passenger side of the truck.
14. Working from the driver side of the truck, locate FT30452 lower coil over axle mount. Place the mount on the axle where the factory coil perch was located, aligning the arm of the new perch into the factory lower shock mount on the axle. Using the supplied 14mm bolt and washer and small amount of the supplied thread locking compound attach it to the axle. Using the original lower shock bolt and nut tab attach the support arm of the mount to the factory shock mount on the axle. Torque the 14mm bolt to 100 ft. lbs. and the support arm bolt to 80 ft. lbs. SEE PHOTO IN NEXT COLUMN.



15. Locate FT30151 (driver side) Coil Over Hoop and align onto the frame where the factory bucket was mounted. Align the holes in the hoop to the holes in the frame. Using the supplied 1/2" x 1 1/2" hardware on the holes on the outside of the frame attach the hoop to the frame, leave loose at this time. Use the supplied 7/16" x 1 3/4" hardware attach the two holes on the top of the frame to the bucket, leave loose at this time.
16. Using a drill with a 1/2" bit, drill the two rear holes out through the frame. Using the supplied 1/2" x 1 1/2" hardware attach to the frame. Leave loose at this time. SEE PHOTO BELOW.



17. Reinstall the trac bar bracket to the frame and torque the frame mount bolts to 80 ft. lbs & motor mount bolt to 55 ft. lbs & trac bar bolt to 400 ft. lbs.
18. Locate FT30197 upper limit strap bracket. Place the bracket on the inside of the frame to the rear hole on the bottom of the frame. Using the supplied 1/2" x 1 3/4" hardware attach it to the frame. Attach the forward hole of the hoop to the frame with the supplied 1/2" x 1 1/2" hardware at this time also. Torque to 50 ft. lbs. SEE PHOTO ON NEXT PAGE.



19. Locate the upper axle pivot on the front axle. Remove the bolt and discard. Locate FT30198 lower limit strap bracket and attach to the inside of the upper pivot using the supplied 18mm x 130mm bolt, nut, and washer. If installing this kit on a 8" kit the long end of the bracket will be facing upward and on a 6" kit the short end will be facing up. SEE PHOTOS BELOW.

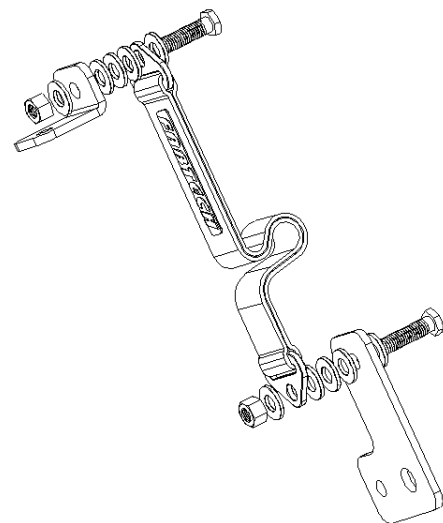


Picture Shown With Tab Set Up For 8" Kit

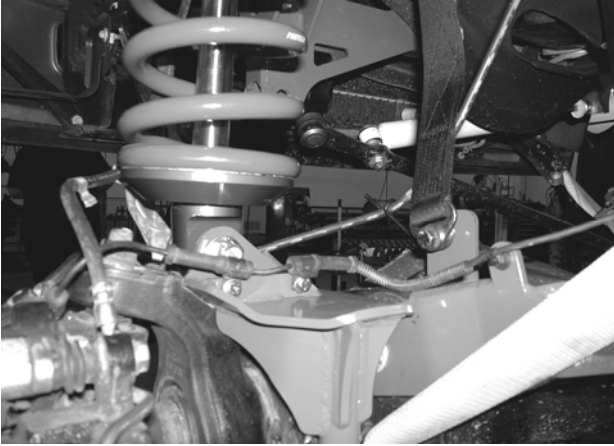


Picture Shown With Tab Set Up For 6" Kit

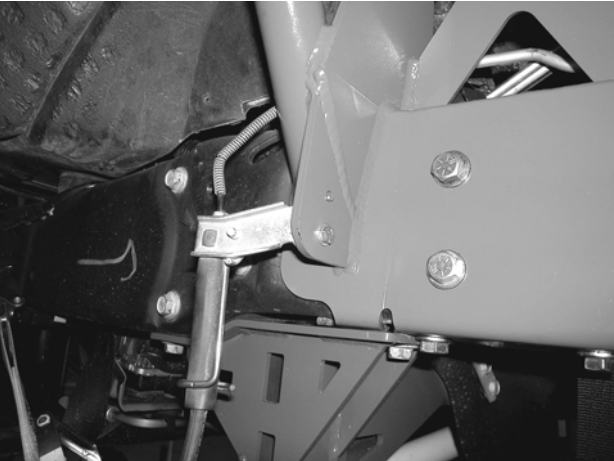
20. If installing Fabtech's optional Hydraulic front bump stop kit do so at this time.
21. Locate one of the 4.0 Dirt Logic Coil Over 6" or 8" kits. Insert one of the supplied FT83034 mis-alignment spacers to each side of the top bearing in the shock. Next locate the supplied FT1040 and FT1041 Delron bushings and place the one with the larger inner ring on the side of the bearing without the snap ring and the one with the smaller inner ring on the side with the snap ring. Insert the top of the coil over into the coil over hoop. Using the supplied 5/8" x 3.5" bolt and washers and FT30183 nut tab connect the coil over to the hoop. SEE DIAGRAM ON LAST PAGE.
22. Locate the last two FT83034 mis-alignment spacers and insert them into the bearing on the bottom of the shock. Using the supplied 5/8" x 3.5" bolt, nut, and washer attach it to the lower mount on the axle. SEE DIAGRAM ON LAST PAGE.
23. Install the supplied limit straps to the upper and lower mounts using the supplied 1/2" x 1 3/4" bolt, nuts, and washers. You will need to stack three 1/2" washer between the limit strap and mounting brackets on both upper and lower mounts. SEE DIAGRAM BELOW.



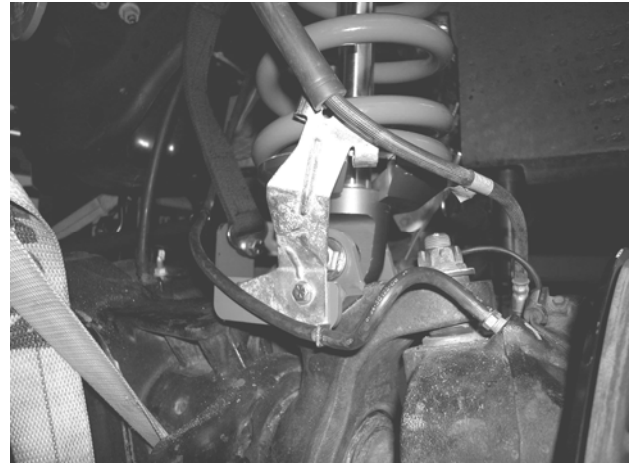
24. Using the Supplied ¼" x 1" bolt, nut, and washer attach the ABS line to the new lower coil perch as shown below. The original line clamps will be reused. SEE PHOTO BELOW.



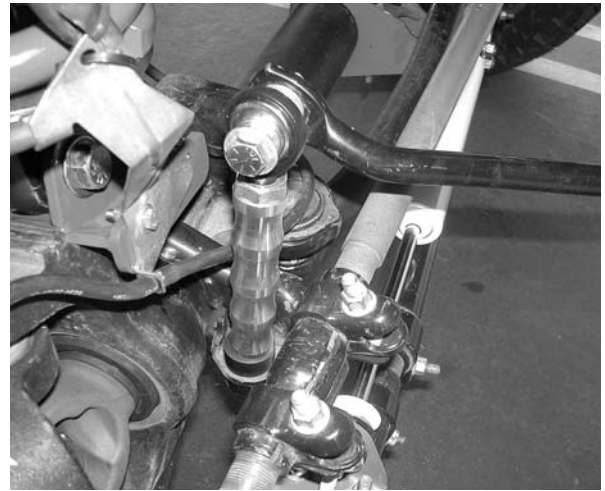
25. Using the supplied ¼"x 1" bolt attach the brake line to the coil over hoop. You will need to carefully pull the hard line free from the frame. Re-install the brake calipers and torque caliper bolts to 130lbs. SEE PHOTO BELOW.



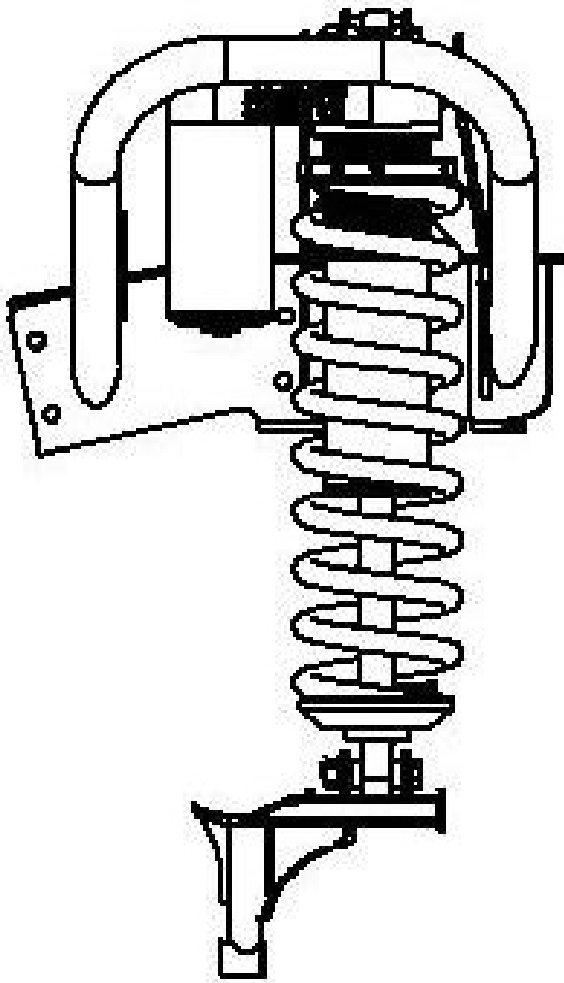
26. Attach the lower brake line bracket to the new lower coil over mount using the supplied ¼" x 1" bolt, nut, and washer. SEE PHOTO BELOW.



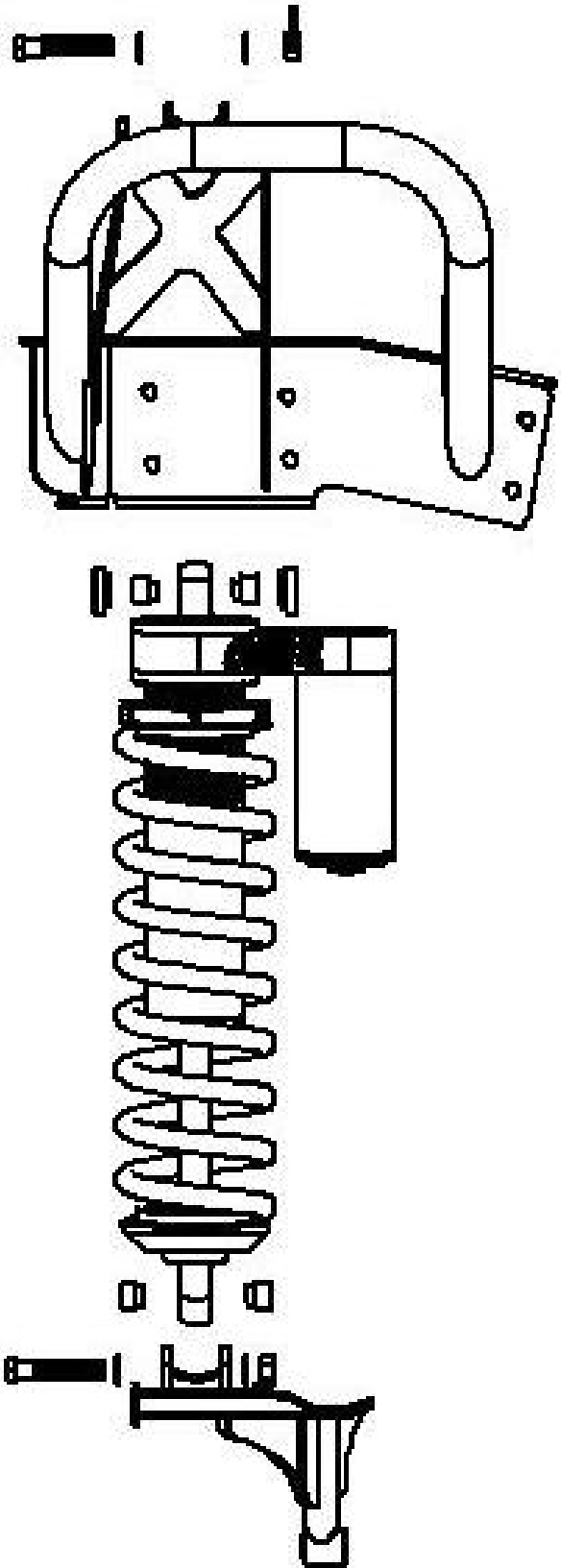
27. Make sure the vacuum line from the hub assembly is still routed in the stock position. If the line is tight carefully pull some slack free from the frame mounts.
28. Reconnect the front sway bar back to the axle mount using the original hardware. SEE PHOTO BELOW.



29. Reinstall the front tires and set the truck back on the ground. Turning the steering wheel fully in each direction, check for contact between the tires and any newly installed components. Drive the truck fifty miles and complete a full front end alignment. Re-adjust headlights.



Passenger Side



Driver Side