



***Installation Instructions***  
**FTS220222**  
**2004 – 2007 F-150 4wd**  
**2.5" Dirt Logic Adjustable Coil Over (SHOCKS ONLY)**

*PARTS LIST-*  
**FTS22022**

<b>Qua</b>	<b>Part #</b>	<b>Description</b>
2	FT825042	2.50 Adjustable Coil Over Assembly
2	FT30111	Mis-Alignment Hat
2	FT30112	Mis-Alignment Front
2	FT30113	Mis-Alignment Rear
2	62115501081	5/8"-11 x 5 1/2" Bolt Grade 8
2	62110003382	5/8"-11 Stover Lock Nut Grade 8
4	62000005081	5/8" SAE Flat Washer Grade 8
2	FT220222i	Instruction Sheet

*TOOL LIST- (NOT INCLUDED)*

- Assorted Metric & Standard Wrenches
- Torque Wrench
- Standard Allen Wrench Set

**READ ALL INSTRUCTIONS THOROUGHLY FROM START TO FINISH BEFORE BEGINNING INSTALLATION! IF THESE INSTRUCTIONS ARE NOT PROPERLY FOLLOWED, SEVERE FRAME, DRIVELINE AND / OR SUSPENSION DAMAGE MAY RESULT.**

**CHECK FOR FRAME AND SUSPENSION DAMAGE PRIOR TO INSTALLTION. THIS KIT DOES NOT REQUIRE WELDING FOR INSTALLATION. DO NOT WELD ANY OF THESE COMPONENTS. THE INSTALLATION OF THIS KIT SHOULD BE PERFORMED BY A PROFESSIONAL MECHANIC.**

**CHECK ALL PARTS INCLUDED IN THIS KIT TO THE PARTS LIST ABOVE BEFORE BEGINNING INSTALLATION OF THE KIT.**

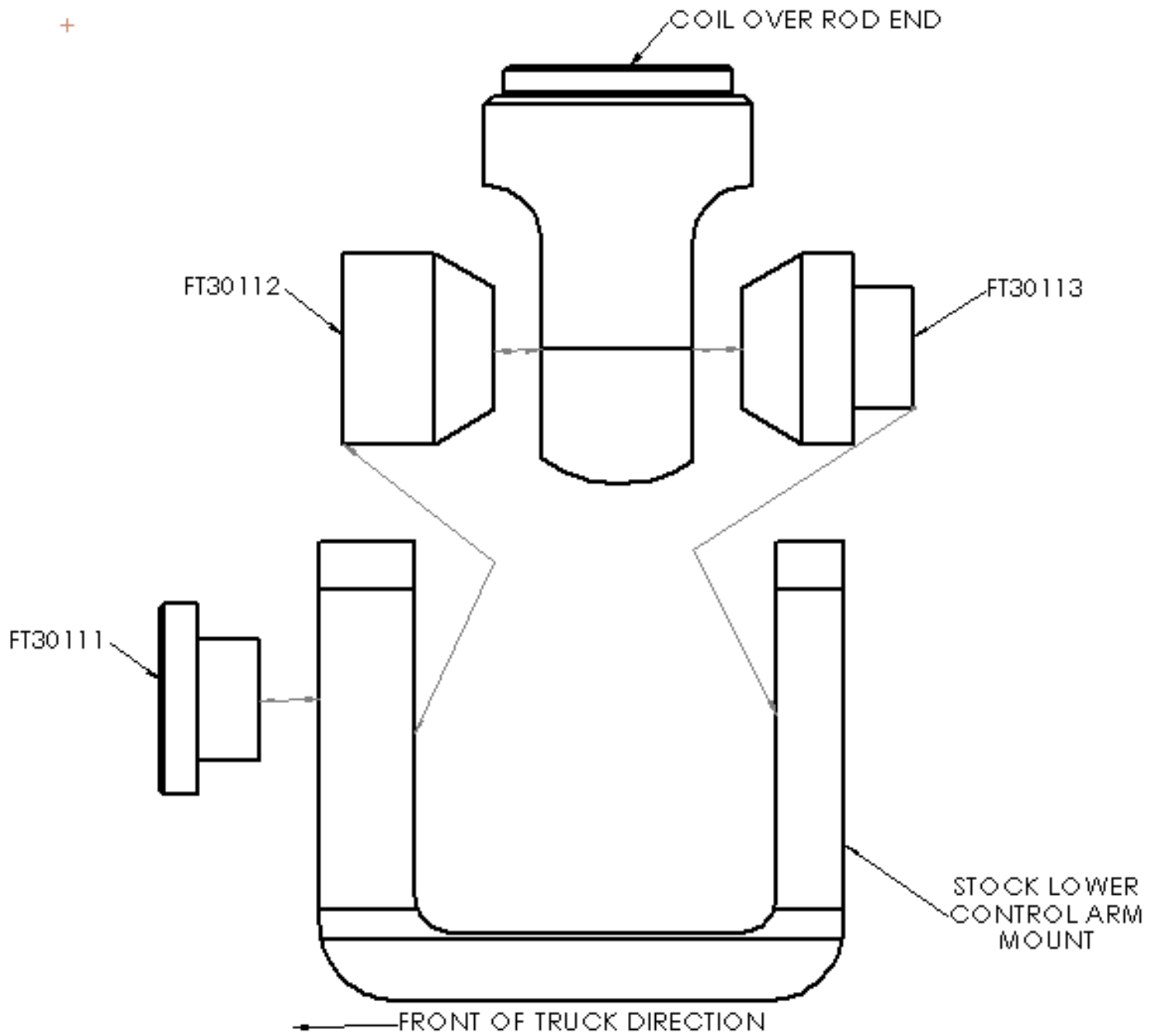
**FINAL RIDE HEIGHT OF THE TRUCK SHOULD NOT EXCEED 6" OVER THE STOCK TRUCK RIDE HEIGHT. INCREASING THE RIDE HEIGHT OVER THE RECOMMEND HEIGHT CAN CAUSE SERIOUS SUSPENSION AND OR CHASSIS DAMAGE.**

**SPANNER WRENCH IS NOT INCLUDED IN THIS KIT,IF NEEDED ORDER FTS98008.**

## *INSTALLATION-*

1. Disconnect the negative terminal on the battery. Follow the main enclosed instruction sheet for the complete installation of the kit with the exception of the installation of the coil over assembly. The following should be followed when installing the 2.5" Adjustable Coil Over.
2. Working from the driver side of the truck, locate one of the supplied FT30107 adjustable coil over. Locate one of each of the supplied FT30011 & FT30012 & FT30013 Mis-Alignments, and 5/8" bolt, nut, and washers. Attach the shock to the lower control arm first as shown in the drawing below. The FT30012 is the wider misalignment and should be installed on the side of the shock that faces the front of the truck. Torque to 100 ft-lbs. **SEE DRAWING AT BOTTOM OF PAGE.**
3. Using the supplied 3/8" bolts and washers attach the upper mounting plate to the factory upper coil seat. Torque to 35 ft-lbs.
4. Repeat steps two and three on the passenger side of the truck.
5. Recheck each nut and bolt for proper torque.
6. Turn the wheels left to right and check for proper turning radius.
- 8 Check the front-end alignment and set to the factory specifications. Re-adjust headlights.

+



**RETORQUE ALL NUTS, BOLTS AND LUGS AFTER 50 MILES AND PERIODICALLY THEREAFTER.**

Looking for performance coilover kits? Visit our website.