



Installation Instructions

Headache Rack

Product Number: HR2011

Application: 2016 TOYOTA TACOMA

SAFETY

Your safety and the safety of others is very important.

- In order to help you make informed decisions about safety, we have provided installation instructions and other information.
- These instructions alert you to potential hazards that could hurt you or others.
- Please do a job safety analysis (JSA) before each task to identify potential hazards for your situation and remove/protect against them.
- You must use your own good judgment, and take your time.

Read and understand all safety precautions and instructions before installing this product.

THIS PRODUCT IS FOR OFFROAD USE ONLY. ALL LIABILITY FOR INSTALLATION AND USE RESTS WITH THE OWNER.

CARELESS INSTALLATION AND OPERATION CAN RESULT IN SERIOUS INJURY OR EQUIPMENT DAMAGE.

INJURY HAZARD

Failure to observe these instructions could lead to severe injury or death.

- Always** remove jewelry and wear eye protection.
- Always** use extreme caution when jacking up a vehicle for work. Set emergency brake and use tire blocks. Locate and use the vehicle manufacturers designated lifting points. Use jack stands.
- Always** use appropriate and adequate care in lifting components into place.
- Always** insure components will remain secure during installation and operation.
- Always** wear safety glasses when installing this kit. A drilling operation will cause flying metal chips. Flying chips can cause serious eye injury.
- Always** use extreme caution when drilling on a vehicle. Thoroughly inspect the area to be drilled (on both sides of material) prior to drilling, and relocate any objects that may be damaged.
- Always** use extreme caution when cutting and trimming during fitting.
- Always** tighten all nuts and bolts securely per installation instructions.
- Always** route electrical cables carefully. Avoid moving parts, components that become hot and rough or sharp edges.
- Always** insulate and protect all exposed wiring and electrical terminals.
- Always** perform regular inspections and maintenance on mounts and related hardware.



Installation Instructions
Headache Rack
Product Number: HR2011
Application: 2016 TOYOTA TACOMA

I. Overview

Congratulations on your new purchase of the industries' best and most stylish Headache Rack available for the 2016 Toyota Tacoma! This rack has been **engineered.**

Your Headache Rack was designed in 3-D from digitized data, CNC laser cut, fabricated, and powder coated... all in the U.S.A.

Enjoy the fit and finish of a quality Headache Rack from Fab Fours Inc.

Insert image



Installation Instructions

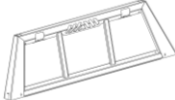




Headache Rack

Product Number: HR2011
Application: 2016 TOYOTA TACOMA

II. Tools Required

- 11/16", 7/16", 5/8" Wrenches
- 11/16", 7/16", 5/8" Sockets and Drivers
- #27 .144" Drill Bit

III. Kit Contents

	QTY	DESCRIPTION	FAB FOURS PART NUMBER
	x 1	Headache Rack	20952
	x 1	HR2011 Driver Side Bracket	20986
	x 1	HR2011 Passenger Side Bracket	20987
	x 1	HR2011 Hardware Kit	50047
	x 1	HR2011 Instruction Manual	HR2011-IM



Installation Instructions
Headache Rack
Product Number: HR2011
Application: 2016 TOYOTA TACOMA

IV. Installation

A. Remove tie downs from inside of bed with a T40 torx. Install the brackets to the bed as shown below. Place the tie down over the bracket and loosely bolt in place (Fig. 1a).



Figure 1a



Installation Instructions
Headache Rack
Product Number: HR2011
Application: 2016 TOYOTA TACOMA

B. With bracket installed to the bed sides, drill the holes into the top of the rail with a #27 (.144") drill bit. Install using supplied 1/4" hex head screw hardware (Ref. Figure 2a-b).

C. Complete Steps A and B for both sides.

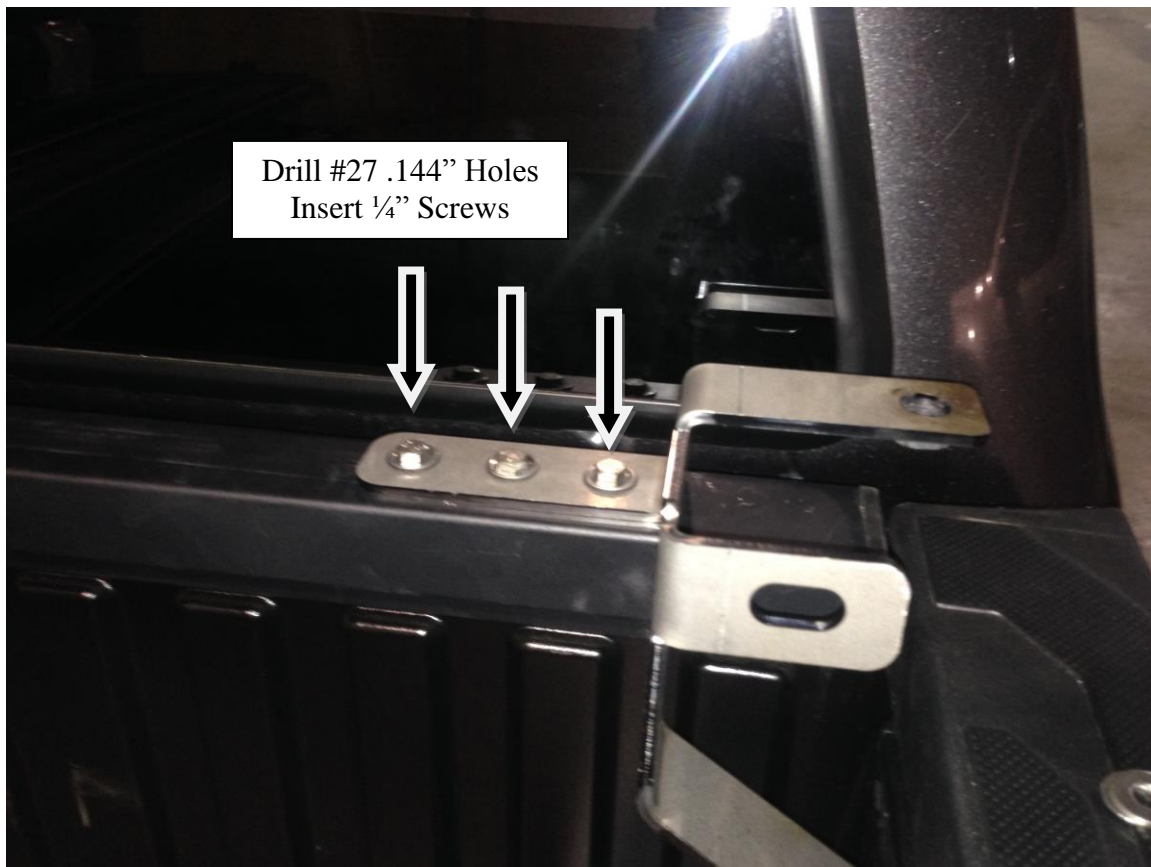


Figure 2a



Installation Instructions
Headache Rack
Product Number: HR2011
Application: 2016 TOYOTA TACOMA

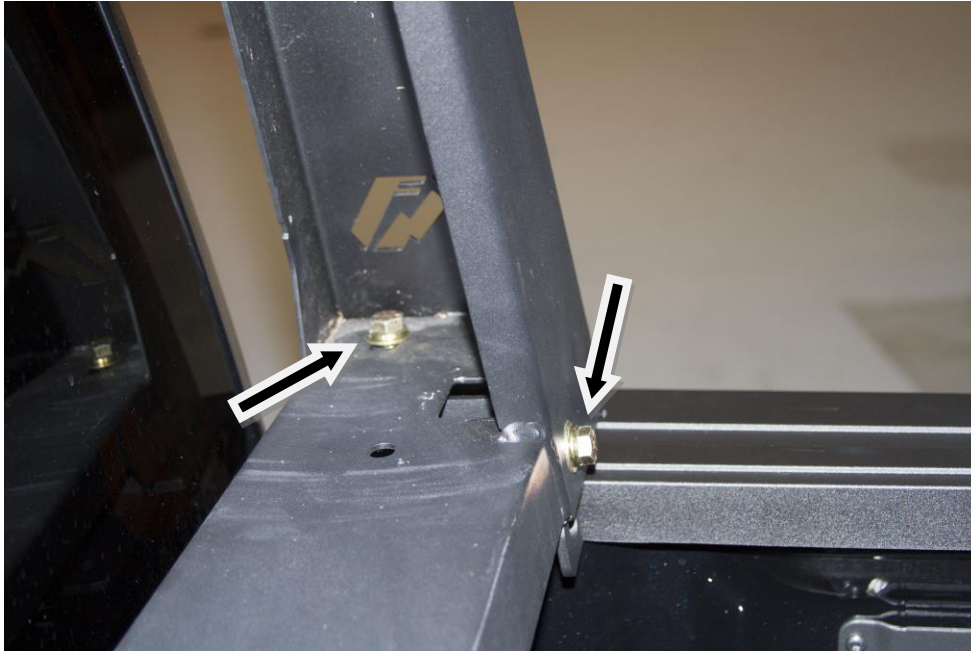


Figure 2b



Installation Instructions
Headache Rack
Product Number: HR2011
Application: 2016 TOYOTA TACOMA

D. Install the rack over the top of the mounts. Attach with 7/16" hardware.

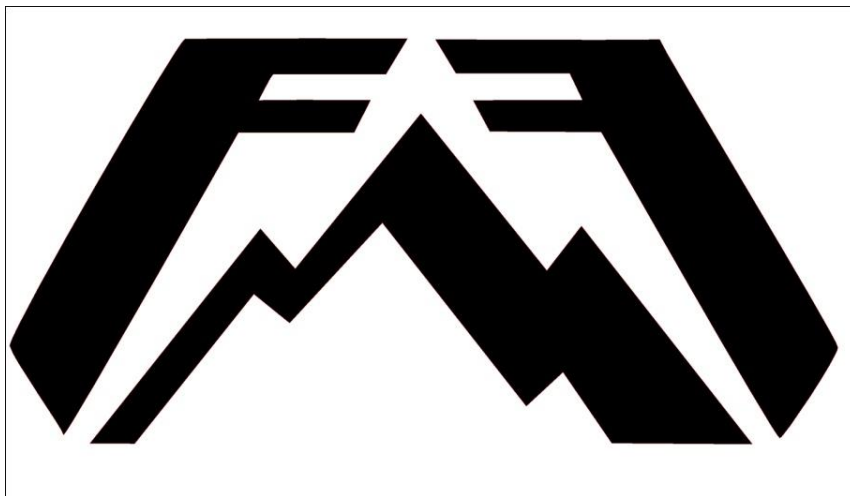




Installation Instructions
Headache Rack
Product Number: HR2011
Application: 2016 TOYOTA TACOMA

V. Maintenance/Care

- Periodically check and tighten all nuts.
- Stripped, fractured, or bent bolts or nuts need to be replaced.



More than expected... Better than expected.