



Installation Instructions

Toyota Tacoma Vengeance Rear

Product Number: E3651
Application: 2016 Tacoma

SAFETY

Your safety and the safety of others is very important.

- In order to help you make informed decisions about safety, we have provided installation instructions and other information.
- These instructions alert you to potential hazards that could hurt you or others.
- Please do a job safety analysis (JSA) before each task to identify potential hazards for your situation and remove/protect against them.
- You must use your own good judgment, and take your time.

Read and understand all safety precautions and instructions before installing this product.

**THIS PRODUCT IS FOR OFFROAD USE ONLY. ALL LIABILITY FOR
INSTALLATION AND USE RESTS WITH THE OWNER.**

**CARELESS INSTALLATION AND OPERATION CAN RESULT IN SERIOUS INJURY
OR EQUIPMENT DAMAGE.**

**SENSORS' FIELD OF VIEW WILL BE ALTERED WITH USE OF THE
REPLACEMENT BUMPER.**

Injury hazard

Failure to observe these instructions could lead to severe injury or death.

- Always** remove jewelry and wear eye protection.
- Always** use extreme caution when jacking up a vehicle for work. Set emergency brake and use tire blocks. Locate and use the vehicle manufacturers designated lifting points. Use jack stands.
- Always** use appropriate and adequate care in lifting components into place.
- Always** insure components will remain secure during installation and operation.
- Always** wear safety glasses when installing this kit. A drilling operation will cause flying metal chips. Flying chips can cause serious eye injury.
- Always** use extreme caution when drilling on a vehicle. Thoroughly inspect the area to be drilled (on both sides of material) prior to drilling, and relocate any objects that may be damaged.
- Always** use extreme caution when cutting and trimming during fitting.
- Always** tighten all nuts and bolts securely per installation instructions.
- Always** route electrical cables carefully. Avoid moving parts, components that become hot and rough or sharp edges.
- Always** insulate and protect all exposed wiring and electrical terminals.
- Always** perform regular inspections and maintenance on mounts and related hardware.





Installation Instructions

Toyota Tacoma Vengeance Rear

Product Number: E3651
Application: 2016 Tacoma

I. Overview

Congratulations on your new purchase of the industries' best and most stylish Rear Bumper available for the Toyota Tacoma! This bumper has been engineered for strength while keeping the weight down.

Your Rear Bumper designed in 3-D from digitized data, CNC laser cut, fabricated, and powder coated... all in the U.S.A.

Enjoy the fit and finish of a quality Tacoma Rear Bumper from Fab Fours Inc.





Installation Instructions

Toyota Tacoma Vengeance Rear

Product Number: E3651
Application: 2016 Tacoma

II. Tools Required

- Socket Wrench with Extension
- Breaker Bar
- 19mm, 17mm, and 9mm Wrenches and Sockets
- Flat and Phillips Head Screw Drivers
- Allen wrench set

III. Removal of Stock Bumper

A. Disconnect the sensor, light, and towing harnesses.



B. Remove the license plate. Remove the pin behind the license plate.

C. Remove the trailer plug and license plate lights.

D. Remove the plastic center piece of the bumper by removing two push pins under the center step and pushing up the clips that secure it into place.

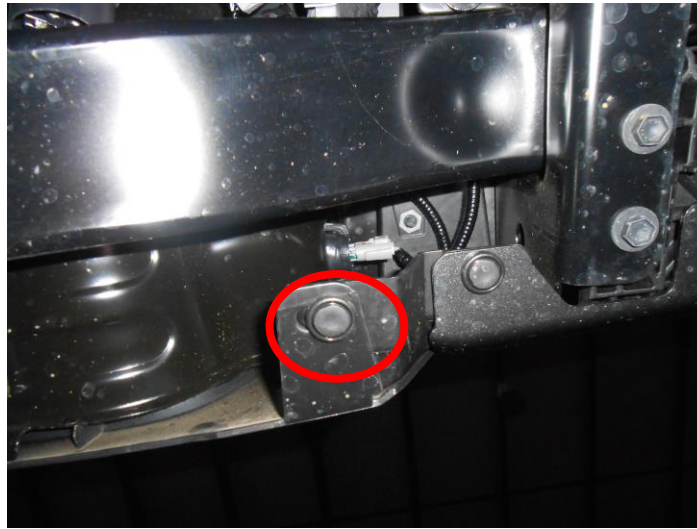




Installation Instructions

Toyota Tacoma Vengeance Rear

Product Number: E3651
Application: 2016 Tacoma



E. Use a 12mm socket to remove 10 bolts on the metal piece of the lower bumper.





Installation Instructions

Toyota Tacoma Vengeance Rear

Product Number: E3651
Application: 2016 Tacoma

F. Remove corner plastic piece by removing two 12mm bolts on the underside of the bumper.



G. Remove gold clip that holds the corner cover.

I. Remove cover clips to pull off the corner cover.

J. Remove the sensors from the bumper and save for the Fab Fours bumper installation if equipped

IV. Pre-Installation

- A. Remove Fab Fours bumper from the shipping carton and lay all items out on a blanket to prevent damage.**
- B. Install provided license plate lights.**
- C. Wire both lights into the existing lights on the stock harness.**
- D. For sensor equipped vehicles: Install sensor from the outside of the bumper by inserting the connector in first and rotating until the sensor is fully installed. DO NOT EPOXY AT THIS TIME.**





Installation Instructions

Toyota Tacoma Vengeance Rear

Product Number: E3651
Application: 2016 Tacoma

- E. Prep the area shown below and attach the red LED strip in the location shown. Wire as desired depending on functionality. You have the following options: wire to your brake lights, running lights or tag lights.



Figure 5 – LED Strip Location



Installation Instructions Toyota Tacoma Vengeance Rear

Product Number: E3651

Application: 2016 Tacoma

V. Rear Bumper Installation

NOTE: The Following Installation steps apply to the installation of the. PLEASE READ THE ENTIRE MANUAL BEFORE ATEMPTING INSTALLATION! Ignoring these steps will increase your probability of scratching the vehicle during product Installation!

A. With the help of two others, mount the bumper to the truck and put the new 1/2" and 5/16" hardware provided into the frame and stock mounting locations.



B. Very carefully open the tailgate watching the bottom edge of the tailgate in relation to the top of the bumper making sure they do not come in contact. Also make sure to allow space between the tailgate and the top of the bumper when tailgate is fully open.

C. Fully tighten all fasteners between bumper and brackets and brackets and frame.

D. Install supplied license plate plastic nut inserts and license plate.



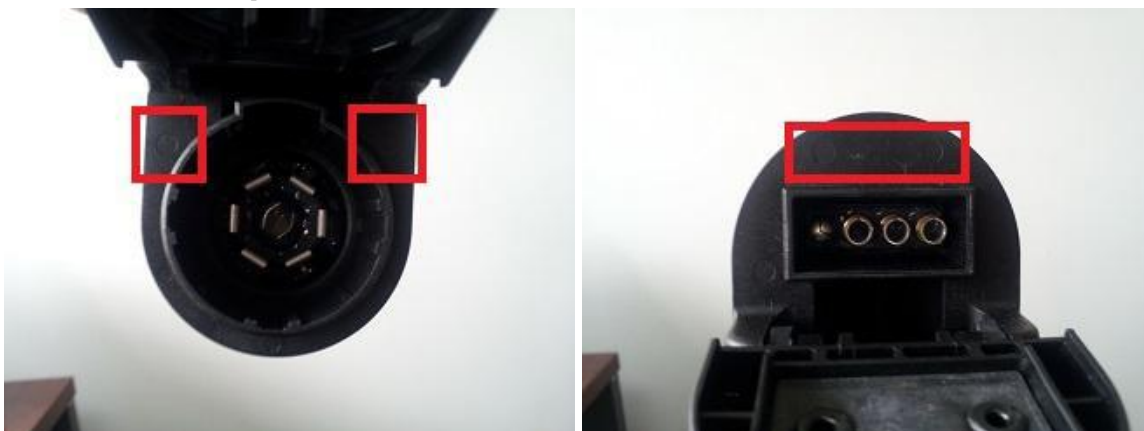


Installation Instructions Toyota Tacoma Vengeance Rear

Product Number: E3651

Application: 2016 Tacoma

E. Install trailer plug receptacle. The stock plug receptacle must be drilled with a 7/32 drill bit (1/4 is acceptable) using the shown impressions in the receptacle as guides. Attach with the provided #8 hardware.



F. Secure all loose wiring and harnesses to the frame or bumper with zip ties. If necessary remove harness with trailer plug connector from OEM mount locations to allow for trailer plug connection.

G. FOR SENSOR BUMPER INSTALLATION ONLY: Install the sensor harness back into the bumper and plug the harness into both the sensors and truck side connector. Test the sensors to ensure that the truck does not read the ground or give off any errors.

H. Enjoy your bumper from Fab Fours!





Installation Instructions

Toyota Tacoma Vengeance Rear

Product Number: E3651
Application: 2016 Tacoma

VI. Maintenance/Care

- Periodically check and tighten all fasteners.
- Stripped, fractured, or bent bolts or nuts need to be replaced.
- After washing of the vehicle make sure to fully dry all surfaces



More than expected... Better than expected

