

# Installation Instructions

## 2016 Nissan Titan XD Rear Bumper

Product Number: T3750/U3750  
Application: 2016+ Nissan Titan XD

## SAFETY

### Your safety and the safety of others is very important.

- In order to help you make informed decisions about safety, we have provided installation instructions and other information.
- These instructions alert you to potential hazards that could hurt you or others.
- Please do a job safety analysis before each task to identify potential hazards for your situation and remove/protect against them.
- You must use your own good judgment, and take your time.

**Read and understand all safety precautions and instructions before installing this product.**

THIS PRODUCT IS FOR OFFROAD USE ONLY. ALL LIABILITY FOR INSTALLATION AND USE RESTS WITH THE OWNER.

**CARELESS INSTALLATION AND OPERATION CAN RESULT IN SERIOUS INJURY OR EQUIPMENT DAMAGE.**

## Injury hazard

### Failure to observe these instructions could lead to severe injury or death.

- Always** remove jewelry and wear eye protection.
- Always** use extreme caution when jacking up a vehicle for work. Set emergency brake and use tire blocks. Locate and use the vehicle manufacturers designated lifting points. Use jack stands.
- Always** use appropriate and adequate care in lifting components into place.
- Always** insure components will remain secure during installation and operation.
- Always** wear safety glasses when installing this kit. A drilling operation will cause flying metal chips. Flying chips can cause serious eye injury.
- Always** use extreme caution when drilling on a vehicle. Thoroughly inspect the area to be drilled (on both sides of material) prior to drilling, and relocate any objects that may be damaged.
- Always** use extreme caution when cutting and trimming during fitting.
- Always** tighten all nuts and bolts securely per installation instructions.
- Always** route electrical cables carefully. Avoid moving parts, components that become hot and rough or sharp edges.
- Always** insulate and protect all exposed wiring and electrical terminals.
- Always** perform regular inspections and maintenance on mounts and related hardware.



# Installation Instructions

## 2016 Nissan Titan XD Rear Bumper

Product Number: T3750/U3750  
Application: 2016+ Nissan Titan XD

### I. Parts List

- T3250 rear replacement bumper with mounting brackets
- 50023-HW
- Instruction Manual
- TXX50-HW
- Spare Tire Lock Retainer Ring
- 2 Lights, grommets, and wiring

### II. Tools Required

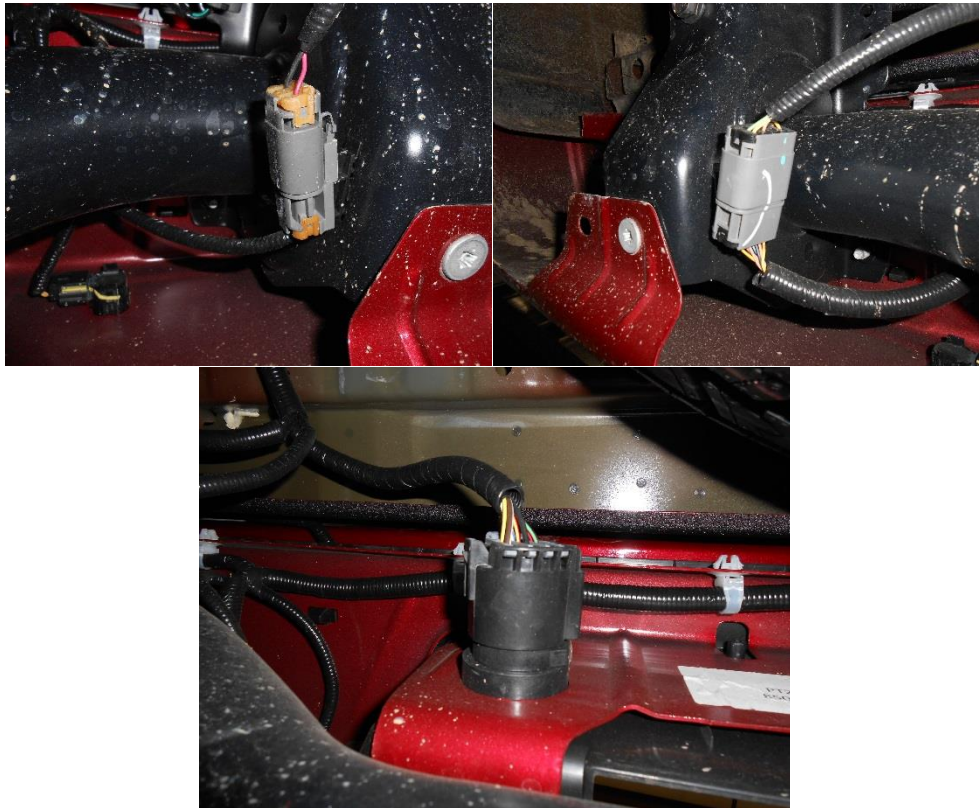
- Socket Wrench with Extensions
- 5/8", 3/4", 8mm, 9mm, and 13mm Sockets
- 5/8", 3/4", 8mm, 9mm, and 13mm Box End Wrench
- 7/32 drill bit



**Installation Instructions**  
**2016 Nissan Titan XD Rear Bumper**  
Product Number: T3750/U3750  
Application: 2016+ Nissan Titan XD

**III. Removal of Stock Bumper**

***A. Disconnect the sensor, light, camera and towing harnesses.***



***B. Remove the license plate.***

***C. Remove the trailer plug and license plate lights.***

***D. Remove the plastic top deck/ center piece of the bumper by pushing up the clips that secure it into place.***

# Installation Instructions

## 2016 Nissan Titan XD Rear Bumper

Product Number: T3750/U3750  
Application: 2016+ Nissan Titan XD



***E. Remove tailgate by removing the limit straps and camera harness from the bed. Then pull up on the driver's side of the tailgate with the tailgate approximately halfway open. Then slide the passenger side off the pivot point.***

# Installation Instructions

2016 Nissan Titan XD Rear Bumper  
Product Number: T3750/U3750  
Application: 2016+ Nissan Titan XD



***F. Use a T45 Torx socket to remove 6 bolts on the metal piece of the lower bumper (2 on the top of each side and 1 on the bottom of each side).***

# Installation Instructions

## 2016 Nissan Titan XD Rear Bumper

Product Number: T3750/U3750  
Application: 2016+ Nissan Titan XD



***G. Remove bumper from truck.***

***I. Reinstall tailgate reversing the removal process and re hookup the camera.***

# Installation Instructions

## 2016 Nissan Titan XD Rear Bumper

Product Number: T3750/U3750  
Application: 2016+ Nissan Titan XD

### IV. Installation

**NOTE:** The following installation steps apply to the installation of the rear bumper. PLEASE READ THE ENTIRE MANUAL BEFORE ATTEMPTING INSTALLATION! Ignoring these steps will increase your probability of scratching the vehicle during product installation.

- 1. Remove the bumper from the shipping carton. Lay all items out on a blanket to prevent damage to the powder coating.**
- 2. Install license plate inserts, backup sensor grommets with plugs, trailer plug (Ref. Figure 5 a-c), tag light (Ref. Figure 6a-b).**

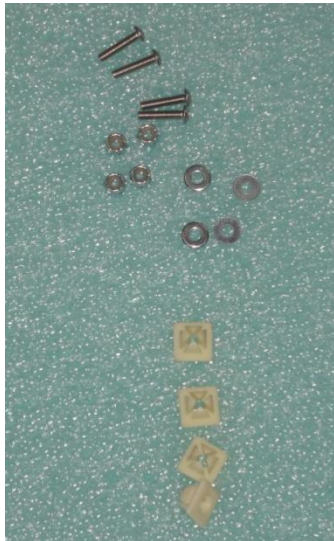


Figure 5a

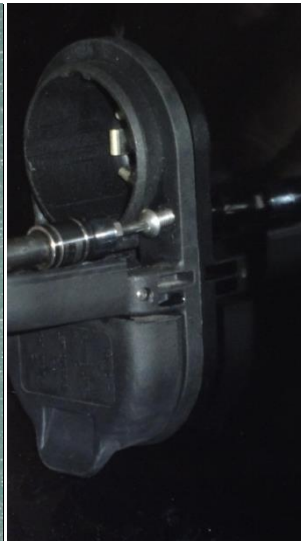


Figure 5b

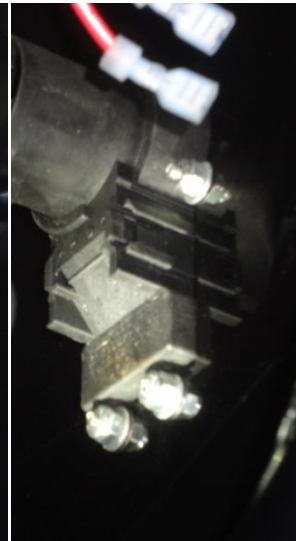


Figure 5c

# Installation Instructions

## 2016 Nissan Titan XD Rear Bumper

Product Number: T3750/U3750  
Application: 2016+ Nissan Titan XD

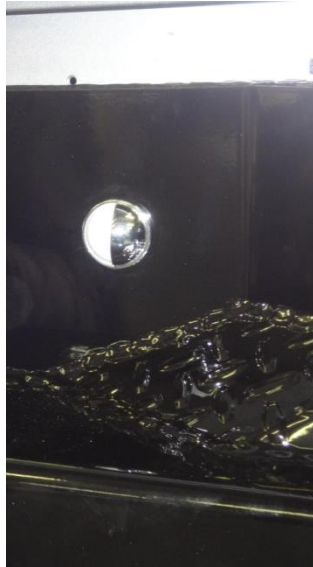


Figure 6a

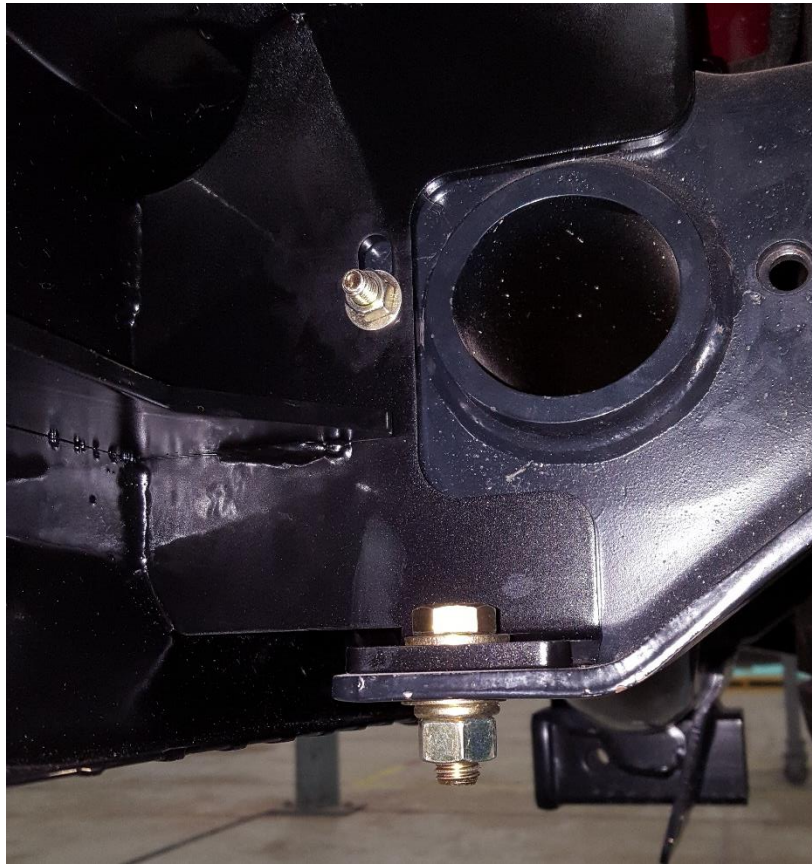


Figure 6b

- 3. Disconnect the factory harness from the OEM bumper. Attach wiring to lights, sensors (if available), and trailer plug. Use zip-ties to secure excess wiring. Do not connect until Fab Fours bumper is installed.***
- 4. With the help of two others, and possibly a floor jack to help support the center of the bumper, lift the Fab Fours bumper into place.***
- 5. With the bumper held in place insert 1/2" bolts through slots in bottom of internal mounting plates and install 5/16 bolts through the vertical part of the internal mounts. Leave bolts loose. See Image Below.***



**Installation Instructions**  
**2016 Nissan Titan XD Rear Bumper**  
Product Number: T3750/U3750  
Application: 2016+ Nissan Titan XD



- 6. Align the bumper side to side and low to ensure a good fit to the truck. Allow for a 0.375" clearance to all painted surfaces, if possible, to allow for frame flex.**
- 7. Check that the tailgate does not interfere with the bumper by opening it very carefully and lowering it into place. If tailgate is too close to the bumper, adjust bumper lower.**
- 8. Fully tighten all fasteners between bumper and brackets and brackets and frame.**
- 9. Install supplied license plate plastic nut inserts and license plate.**

**Enjoy your New Rear Replacement Bumper from Fab Fours!**