

# Installation Instructions

## BS / BSE Front Bumper

Product Number: K3760, K3761, K3762,  
R3760, R3761, R3762

Application: 2016+ Nissan Titan XD

---

## SAFETY

---

### Your safety and the safety of others is very important.

- In order to help you make informed decisions about safety, we have provided installation instructions and other information.
- These instructions alert you to potential injury hazards.
- Please do a job safety analysis before each task to identify potential hazards for your situation and remove/protect against them.
- You must use your own good judgment.
- Read and understand all safety precautions and instructions before installing this product.

**THIS PRODUCT IS FOR OFFROAD USE ONLY. ALL LIABILITY FOR  
INSTALLATION AND USE RESTS WITH THE OWNER.  
CARELESS INSTALLATION AND OPERATION CAN RESULT IN SERIOUS  
INJURY OR EQUIPMENT DAMAGE.  
SENSORS FIELD OF VIEW WILL BE ALTERED WITH USE OF THE  
REPLACEMENT BUMPER.**

---

## Injury hazard

---

### Failure to observe these instructions could lead to severe injury or death.

- Always remove jewelry and wear eye protection.
- Always use extreme caution when jacking up a vehicle for work. Set emergency brake and use tire blocks. Locate and use the vehicle manufacturers designated lifting points. Use jack stands.
- Always use appropriate and adequate care in lifting components into place.
- Always insure components will remain secure during installation and operation.
- Always wear safety glasses when installing this kit. A drilling operation will cause flying metal chips. Flying chips can cause serious eye injury.
- Always use extreme caution when drilling on a vehicle. Thoroughly inspect the area to be drilled (on both sides of material) prior to drilling, and relocate any objects that may be damaged.
- Always use extreme caution when cutting and trimming during fitting.
- Always tighten all nuts and bolts securely per installation instructions.
- Always route electrical cables carefully. Avoid moving parts, components that become hot and rough or sharp edges.
- Always insulate and protect all exposed wiring and electrical terminals.
- Always perform regular inspections and maintenance on mounts and related hardware.



# Installation Instructions

## BS / BSE Front Bumper

Product Number: K3760, K3761, K3762,  
R3760, R3761, R3762

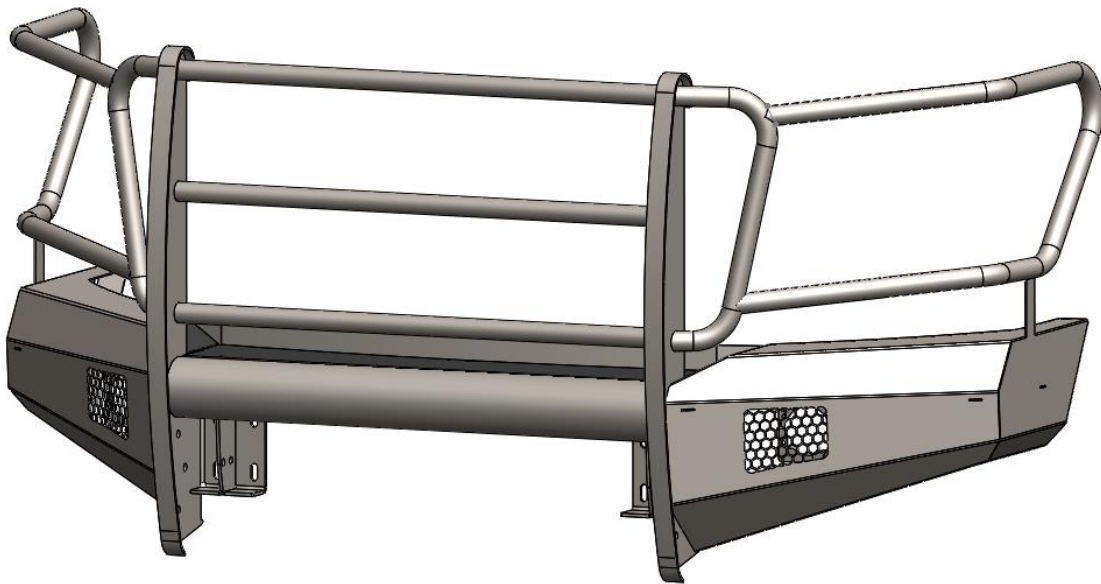
Application: 2016+ Nissan Titan XD

### I. Overview

Congratulations on your new purchase of the industries' best and most stylish front bumper available for the 2016+ Nissan Titan XD. This bumper has been engineered for strength while keeping the weight down.

Your front bumper designed in 3-D from digitized data, CNC laser cut, fabricated, and powder coated... all in the U.S.A.

Enjoy the fit and finish of a quality Black Steel Nissan Titan XD Front Bumper from Fab Fours Inc.



# Installation Instructions

## BS / BSE Front Bumper

Product Number: K3760, K3761, K3762,  
R3760, R3761, R3762

Application: 2016+ Nissan Titan XD

### Parts List

- K/R375X Replacement Bumper
- Brackets
- K186X-hw kit
- Instruction Manual
- Tow hooks

### Tools Required

- Socket Wrench with Extension (Ratcheting wrenches may also be convenient)
- 10mm, 12mm, 14mm Sockets and Box End Wrenches
- Flat head screw drivers
- Floor jack, jack stands, and/or a wood block.

## II. Removal of OEM Bumper

**Note: Save all OEM parts until installation is complete!**

1. *Disconnect factory fog lamps and the sensor harness if equipped from the passenger side.*
2. *Remove 1 10mm bolt and Christmas tree clip from the lower bolt covers on both sides.*



# Installation Instructions

## BS / BSE Front Bumper

Product Number: K3760, K3761, K3762,  
R3760, R3761, R3762

Application: 2016+ Nissan Titan XD



3. *Remove center sensor mounting plates (may not contain sensor depending on trim level). If equipped with sensor unplug them from the harness*



4. *Remove 2 12mm bolts connecting the side bumper supports to the frame.*

# Installation Instructions

## BS / BSE Front Bumper

Product Number: K3760, K3761, K3762,  
R3760, R3761, R3762

Application: 2016+ Nissan Titan XD



5. *While supporting the bumper, unscrew the main bumper mounting bolts (3 per side) using a 14mm socket from the front face of the bumper and remove the bumper.*



# Installation Instructions

## BS / BSE Front Bumper

Product Number: K3760, K3761, K3762,  
R3760, R3761, R3762

Application: 2016+ Nissan Titan XD



6. Remove the tow hooks using a 17mm socket or wrench.

# Installation Instructions

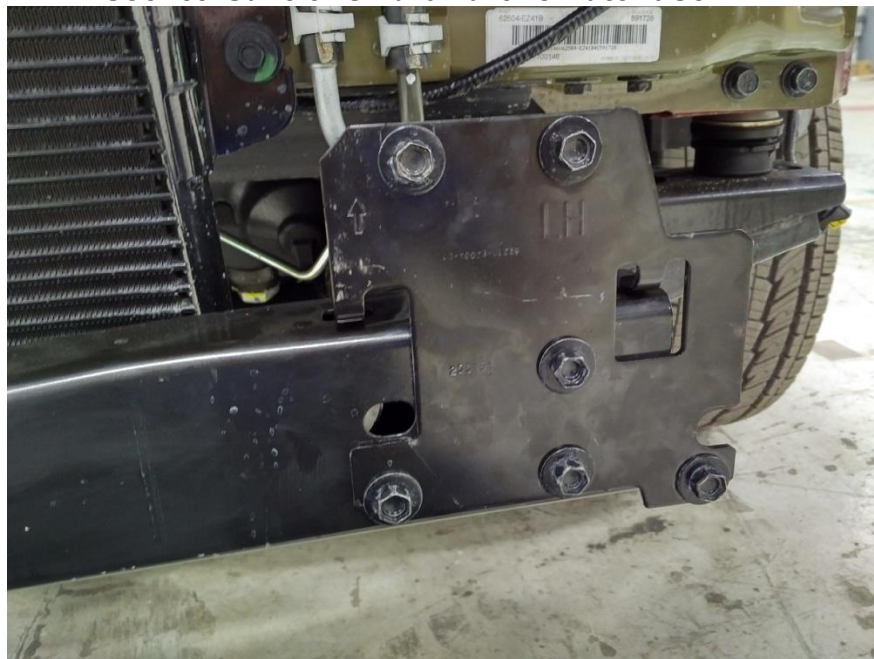
## BS / BSE Front Bumper

Product Number: K3760, K3761, K3762,  
R3760, R3761, R3762

Application: 2016+ Nissan Titan XD



- 7. Remove the bumper mount brackets from both frame rails using a 14mm socket. Save this hardware for later use.**



# Installation Instructions

## BS / BSE Front Bumper

Product Number: K3760, K3761, K3762,  
R3760, R3761, R3762

Application: 2016+ Nissan Titan XD

8. *Remove OEM electrical harness from bumper. Disconnect harness from sensors. Pop out plastic clip holding harness to bumper on both side and carefully pull away.*

### III. Pre-Installation

***NOTE: PLEASE READ THE ENTIRE MANUAL BEFORE ATTEMPTING INSTALLATION! Ignoring these steps will increase your probability of scratching the vehicle during product installation.***

**Optional: If installing winch and roller fairlead into bumper, do it at this time. Follow the winch manufacturer's instruction for installation. If you are installing a winch with a pulling capacity of 12,000 lbs., the front face mounting holes must be used.**

If not installing a winch a license plate may be installed onto the front face of the bumper.

### IV. Front Bumper Installation

- A. ***Mount the brackets to the truck using OEM bumper mount, and tow hook hardware. Do not tighten at the time as the brackets have side to side adjustment.***





# Installation Instructions

## BS / BSE Front Bumper

Product Number: K3760, K3761, K3762,  
R3760, R3761, R3762

Application: 2016+ Nissan Titan XD



**B. Mount bumper to bracket. With the help of at least two others and possibly a floor jack, to support the center of the bumper, lift the Fab Fours bumper into place. Do Not Fully Tighten, Hand Tighten Only.**

**C. Align the bumper top-to-bottom and right-to-left to ensure a perfect fit to the truck. Allow clearance to all painted surfaces; this is to allow for frame flex. FAB FOURS RECOMENDS ATLEAST 5/8" CLEARANCE TO FENDERS.**

**D. Fully tighten all fasteners.**

**E. Enjoy your new front replacement bumper from Fab Fours!**

