



Installation Instructions

GAS TANK SKID PLATE

Product Number: JK3030

SAFETY

Your safety and the safety of others is very important.

- In order to help you make informed decisions about safety, we have provided installation instructions and other information.
- These instructions alert you to potential hazards that could hurt you or others.
- Please do a job safety analysis (JSA) before each task to identify potential hazards for your situation and remove/protect against them.
- You must use your own good judgment, and take your time.

Read and understand all safety precautions and instructions before installing this product.

THIS PRODUCT IS FOR OFFROAD USE ONLY. ALL LIABILITY FOR INSTALLATION AND USE RESTS WITH THE OWNER.

CARELESS INSTALLATION AND OPERATION CAN RESULT IN SERIOUS INJURY OR EQUIPMENT DAMAGE.

Injury hazard

Failure to observe these instructions could lead to severe injury or death.

- Always** remove jewelry and wear eye protection.
- Always** use extreme caution when jacking up a vehicle for work. Set emergency brake and use tire blocks. Locate and use the vehicle manufacturers designated lifting points. Use jack stands.
- Always** use appropriate and adequate care in lifting components into place.
- Always** insure components will remain secure during installation and operation.
- Always** wear safety glasses when installing this kit. A drilling operation will cause flying metal chips. Flying chips can cause serious eye injury.
- Always** use extreme caution when drilling on a vehicle. Thoroughly inspect the area to be drilled (on both sides of material) prior to drilling, and relocate any objects that may be damaged.
- Always** use extreme caution when cutting and trimming during fitting.
- Always** tighten all nuts and bolts securely per installation instructions.
- Always** route electrical cables carefully. Avoid moving parts, components that become hot and rough or sharp edges.
- Always** insulate and protect all exposed wiring and electrical terminals.
- Always** perform regular inspections and maintenance on mounts and related hardware.





Installation Instructions

GAS TANK SKID PLATE

Product Number: JK3030

I. Overview

Congratulations on your new purchase of the Gas Tank Skid Plate. This skid was designed to be used on the 2007+ Jeep JK and has been **engineered** for strength while reducing weight.

Your Skid Plate was designed in 3-D from digitized data, CNC laser cut, fabricated, and powder coated... all in the U.S.A. Enjoy the fit and finish of a quality Gas Tank Skid Plate from Fab Fours!

II. Tools Required

- 18mm and 9/16" wrenches and sockets
- Socket wrench and short/long extensions

III. Installation

Note: This gas tank skid plate is designed to be used with the factory gas tank skid. It is a compression fit over the gas tank to prevent rattling from vibrations so some force may be necessary to attach all bolts.

Note: If you are installing other Fab Fours Skid Plates, the gas tank skid is first, followed by the transfer case skid second, and finally the transmission skid.

1. Remove all contents from shipping carton.
2. Remove 4 bolts from the factory gas tank skid using an 18mm socket and wrench. **ONLY** remove these bolts at this time or the gas tank may begin to drop and if it is unsupported, it may bend.

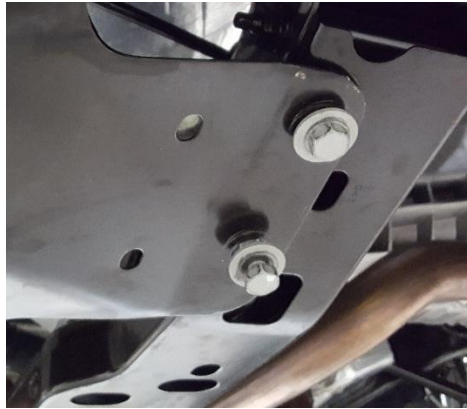




Installation Instructions

GAS TANK SKID PLATE

Product Number: JK3030



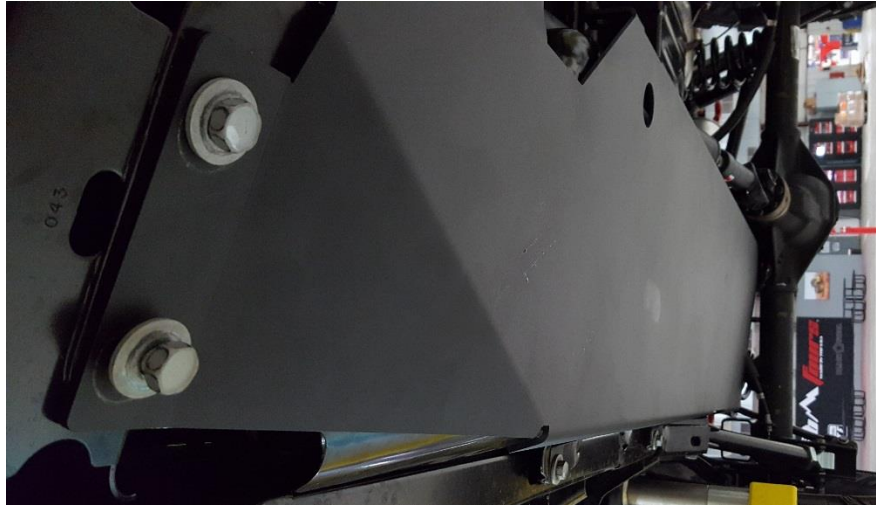
3. Put the Fab Fours Skid Plate in place and loosely attach it using the 4 bolts that were just removed. Bolts should be threaded approximately $\frac{3}{4}$ of the way.



Installation Instructions

GAS TANK SKID PLATE

Product Number: JK3030



4. Remove the front bolt towards the middle of the jeep using an 18mm socket and loosely attach the bracket to the jeep by replacing the bolt. Attach this bracket to the skid plate using the provided 3/8" hardware.



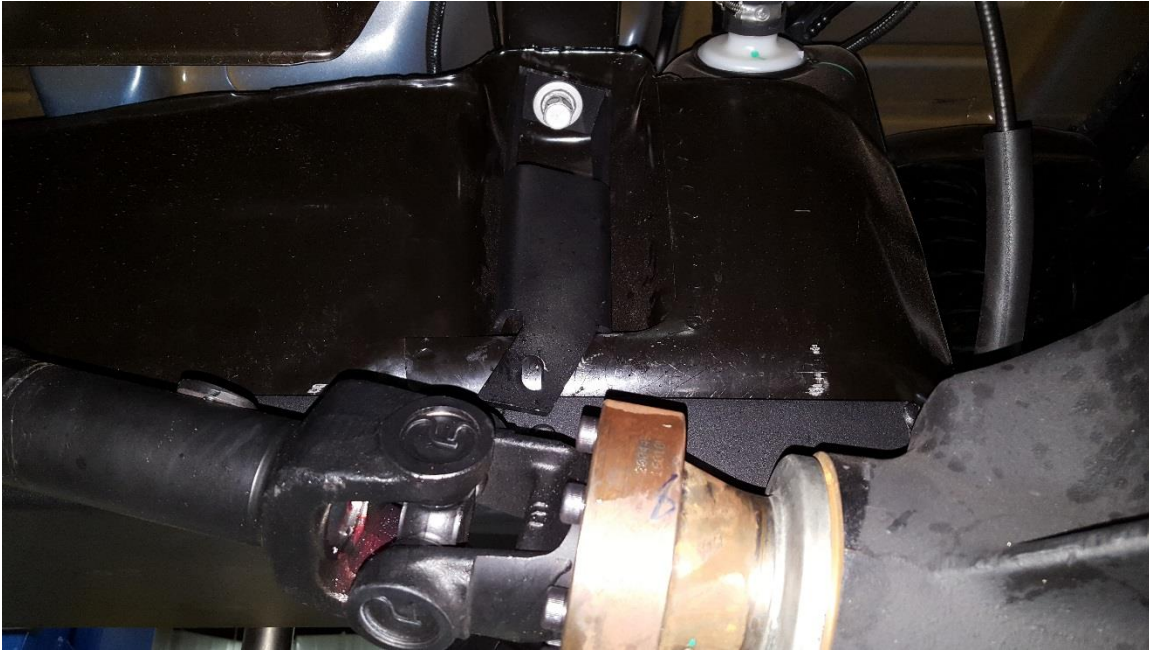
5. Remove the rear inner bolt on the gas tank using an 18mm socket and loosely attach the bracket by replacing the bolt. Attach this bracket to the skid plate.



Installation Instructions

GAS TANK SKID PLATE

Product Number: JK3030



6. Remove the rear outer bolt using an 18mm socket and attach the bracket by loosely replacing the bolt. Attach this bracket to the skid plate with the provided 3/8" hardware.





Installation Instructions

GAS TANK SKID PLATE

Product Number: JK3030

7. If other skid plates are being installed, pause here and begin to install them. Do not tighten any bolts until the other skid plates are in place.
8. Finally, tighten all bolts starting with the factory bolts using an 18mm socket. Then tighten all 3/8" hardware using a 9/16" socket.

Maintenance/Care

- Periodically check and tighten all nuts.
- Stripped, fractured, or bent bolts or nuts need to be replaced.
- Periodically grease the tire carrier pivot.
- Periodically check the tension of the latch hook..



More than expected... Better than expected.