



Installation Instructions

Wrangler Door Skins

Product Number: JK3000, JK3002

Application: 07-16 Jeep Wrangler

SAFETY

Your safety and the safety of others is very important.

- In order to help you make informed decisions about safety, we have provided installation instructions and other information.
- These instructions alert you to potential hazards that could hurt you or others.
- Please do a job safety analysis (JSA) before each task to identify potential hazards for your situation and remove/protect against them.
- You must use your own good judgment, and take your time.

Read and understand all safety precautions and instructions before installing this product.

**THIS PRODUCT IS FOR OFFROAD USE ONLY. ALL LIABILITY FOR
INSTALLATION AND USE RESTS WITH THE OWNER.**

**CARELESS INSTALLATION AND OPERATION CAN RESULT IN SERIOUS INJURY
OR EQUIPMENT DAMAGE.**

**SENSORS FIELD OF VIEW WILL BE ALTERED WITH USE OF THE
REPLACEMENT BUMPER.**

Injury hazard

Failure to observe these instructions could lead to severe injury or death.

- Always** remove jewelry and wear eye protection.
- Always** use extreme caution when jacking up a vehicle for work. Set emergency brake and use tire blocks. Locate and use the vehicle manufacturers designated lifting points. Use jack stands.
- Always** use appropriate and adequate care in lifting components into place.
- Always** insure components will remain secure during installation and operation.
- Always** wear safety glasses when installing this kit. A drilling operation will cause flying metal chips. Flying chips can cause serious eye injury.
- Always** use extreme caution when drilling on a vehicle. Thoroughly inspect the area to be drilled (on both sides of material) prior to drilling, and relocate any objects that may be damaged.
- Always** use extreme caution when cutting and trimming during fitting.
- Always** tighten all nuts and bolts securely per installation instructions.
- Always** route electrical cables carefully. Avoid moving parts, components that become hot and rough or sharp edges.
- Always** insulate and protect all exposed wiring and electrical terminals.
- Always** perform regular inspections and maintenance on mounts and related hardware.



Installation Instructions

Wrangler Door Skins

Product Number: JK3000, JK3002

Application: 07-16 Jeep Wrangler

I. Overview

Congratulations on your purchase of the industries' best and most stylish Wrangler Door Skins! This door skin has been **engineered** for strength while keeping the weight down.

Your door skins have been designed in 3-D, fabricated, and powder coated... all in the U.S.A.

Enjoy the fit and finish of a quality Wrangler Door Skin from Fab Fours Inc!



Installation Instructions

Wrangler Door Skins

Product Number: JK3000, JK3002

Application: 07-16 Jeep Wrangler

II. Vehicle Preparation

1. **Before removing door make sure windows are rolled up!!**
2. Make sure door is off of vehicle. Place door on a soft surface to keep from damaging the inside door panel.
3. The use of anti-seize is recommended with all stainless hardware.

III. Door Skin Install

1. With door off of vehicle, using the provided alignment fixture, set door skin on door.



2. Once you get the door skin into desired location, using a transfer punch center punch the four mount holes located in the center of the door skin.
3. Next with the four holes marked, remove door skin and drill. Starting with a 1/4" drill bit, then using a 17/32" drill bit.
4. With the four holes drilled out to 17/32" you can now install the four rivet nuts.



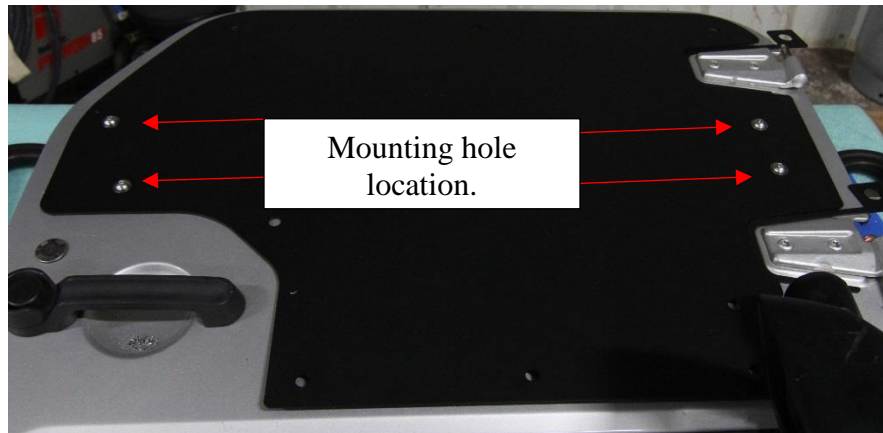
Installation Instructions

Wrangler Door Skins

Product Number: JK3000, JK3002

Application: 07-16 Jeep Wrangler

5. Next place door skin back on door. Install provided button head bolts into mounting locations. Make sure that the door skin is in desired location and tighten the four button head bolts. See image below.



6. Next with the door skin secured to the door, center punch the remaining mounting holes. Make sure the door skin is pressed flush to door before center punching the mounting hole.
7. Next remove the four button head bolts, and door skin from door.
8. Next using the same process in step 3 drill the remaining mount holes.
9. With all the mount holes drilled out to 17/32" you can now install remaining rivet nuts. See image below.





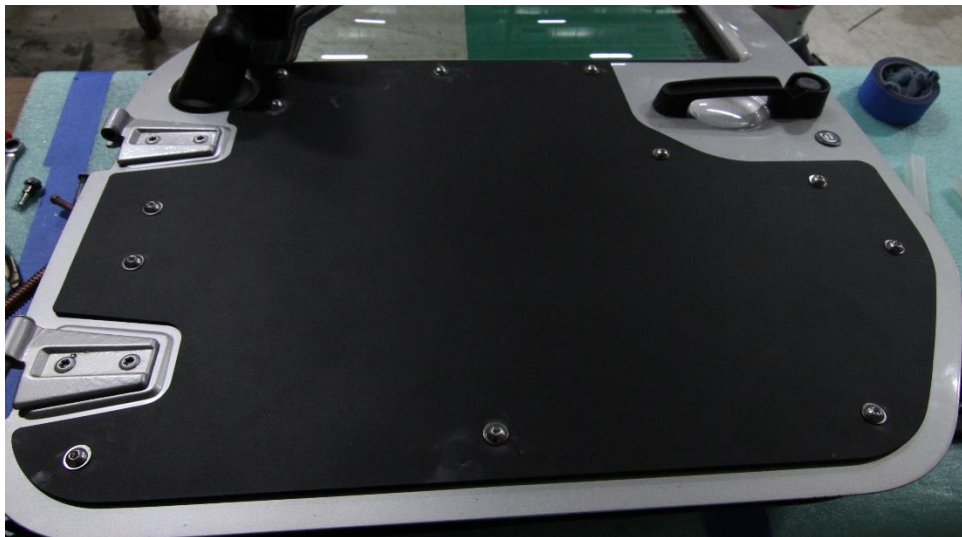
Installation Instructions

Wrangler Door Skins

Product Number: JK3000, JK3002

Application: 07-16 Jeep Wrangler

10. Next place the door skin back on door. Using supplied button head bolts loosely install door skin.
11. Once all hardware has been loosely install you can now tighten all hardware and re-install door.



Repeat steps 1-11 to install passenger side door skin.



Installation Instructions

Wrangler Door Skins

Product Number: JK3000, JK3002

Application: 07-16 Jeep Wrangler

IV. Maintenance/Care

- Periodically check and tighten all fasteners.
- Stripped, fractured, or bent bolts or nuts need to be replaced.
- Keep all surfaces free of dirt, road grime, and standing water to ensure finish longevity.



More than expected... Better than expected