



# Installation Instructions

Front Fender Base

SKU: JK1000

2007-2015 Jeep JK 4 Door

---

## SAFETY

---

**Your safety and the safety of others is very important.**

- In order to help you make informed decisions about safety, we have provided installation instructions and other information.
- These instructions alert you to potential hazards that could hurt you or others.
- Please do a job safety analysis (JSA) before each task to identify potential hazards for your situation and remove/protect against them.
- You must use your own good judgment, and take your time.

**Read and understand all safety precautions and instructions before installing this product.**

THIS PRODUCT IS FOR OFFROAD USE ONLY. ALL LIABILITY FOR INSTALLATION AND USE RESTS WITH THE OWNER.

**CARELESS INSTALLATION AND OPERATION CAN RESULT IN SERIOUS INJURY OR EQUIPMENT DAMAGE.**

---

## Injury hazard

---

**Failure to observe these instructions could lead to severe injury or death.**

- Always** remove jewelry and wear eye protection.
- Always** use appropriate and adequate care in lifting components into place.
- Always** insure components will remain secure during installation and operation.
- Always** wear safety glasses when installing this kit
- Always** use extreme caution when cutting and trimming during fitting.
- Always** tighten all nuts and bolts securely per installation instructions.
- Always** perform regular inspections and maintenance on mounts and related hardware.





## Installation Instructions

Front Fender Base

SKU: JK1000

2007-2015 Jeep JK 4 Door

### Overview

Congratulations on your new purchase of the front fender base assembly.

Your fenders were designed in 3-D from digitized data, CNC laser cut, fabricated, and powder coated... all in the U.S.A.

Enjoy the fit and finish of a quality front fender from Fab Fours, Inc.





## Installation Instructions

Front Fender Base

SKU: JK1000

2007-2015 Jeep JK 4 Door

### I. Tools Required

- Allen wrenches
- Torx wrenches
- Socket set and wrenches
- Drill
- ¼" drill bit
- Anti-seize (recommended)

### II. Factory Fender Removal (Perform these steps for both sides.)

1. Unbolt and remove the factory windshield bracket. Save both brackets and all hardware for reinstallation.



2. Remove the wipers from the wiper cowl trim panel by lifting up the plastic bolt cover and removing the nut on each wiper.
3. Remove the wiper cowl and torx bolts. Save the cowl and hardware for reinstallation.



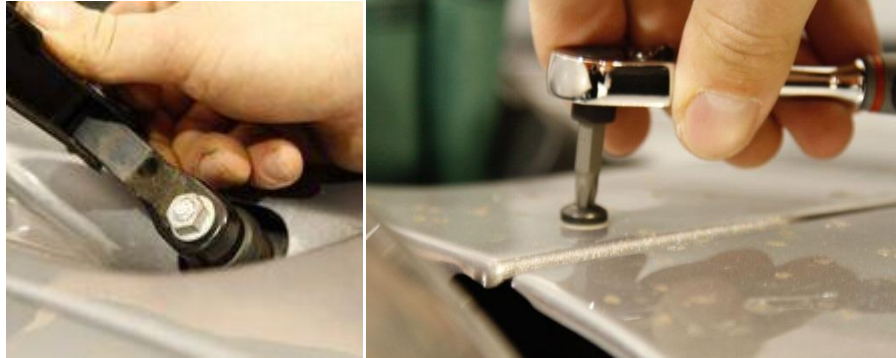


## Installation Instructions

### Front Fender Base

SKU: JK1000

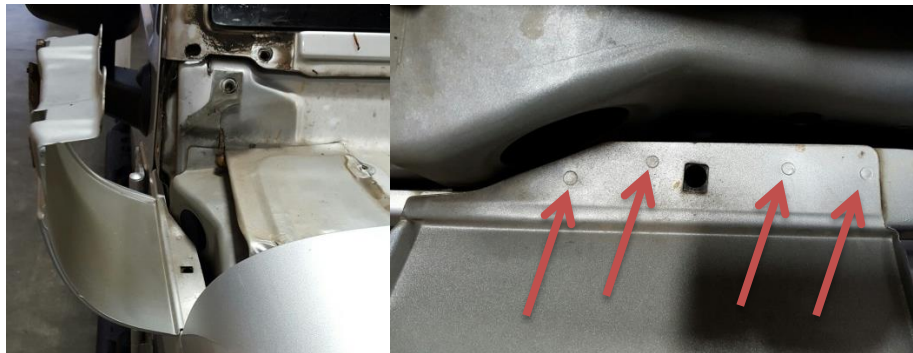
2007-2015 Jeep JK 4 Door



4. Unbolt the fender bolts that are located under the wiper cowl. **Note: Remove the factory antenna at this time for passenger side fender removal. Save for reinstallation.**

5. Fold the cowl side panels outward to gain access to the spot welds holding the cowl panel to the fender.

6. Using a  $\frac{1}{4}$ " drill bit, drill out the four spot welds.



7. Using a solid work surface and clamps, clamp the cowl side panel down by the drilled flange and bend the cowl back to original shape. Save the cowl for reinstallation.

8. Remove the OEM inner fender bolts and plugs and remove the liners.

9. Unbolt the 9 fender bolts and remove the fender. Two bolts found inside the door, two bolts are found under the door, one bolt under the headlight, and the remaining four are under the hood.





## Installation Instructions

### Front Fender Base

**SKU: JK1000**

2007-2015 Jeep JK 4 Door

**10.** Grind off the factory fender bracket at the gooseneck bend and remove the bracket from the frame. This bracket will interfere with your new fenders. Touch up your frame with paint to prevent rust from forming if needed.



**11.** Reinstall the factory cowl side panels, center cowl panel, and windshield bracket using factory hardware.

**12.** Your vehicle is now ready to accept your new Fab Fours fender base.

### III. Fab Fours Fender Base Installation

**1.** While the fender is on the floor, install the factory hood latch in the hood latch pocket on your new fenders before installation to the vehicle.

**2.** While the fender is on the floor, install the base skin fully tightening the 11 3/8-16 button head cap screws. Install the 5 inch piece of edge trim on each fender. The edge trim goes on the back side of the fender and will press against the frame of the vehicle when installed. This location is indicated by the arrow in the image below.





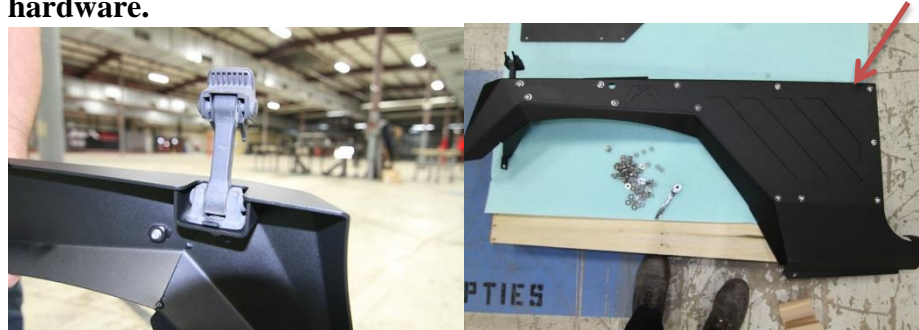
## Installation Instructions

### Front Fender Base

SKU: JK1000

2007-2015 Jeep JK 4 Door

**Note:** Anti-seize is always recommended when using stainless steel hardware.



3. While the fender is on the floor, install the marker light and grommet to the fender skin. Allow the marker light wires to hang into the wheel well opening.

4. While on the floor, install the antenna housing to the passenger fender skin using supplied hardware.

5. With the help of a friend, lift your new preassembled fender onto the vehicle and loosely install the six factory fender bolts.

**Note:** If installing the passenger side, hold the fender away from the vehicle just far enough to fit your hand behind and connect the antenna lead to the antenna housing before installing the hardware.

- a) One bolt is inside the wheel well and behind the headlight. This one will be tight; you will need to pull the bracket down to start the bolt.
- b) Two bolts are under the hood.
- c) Two bolts are inside the door jam.
- d) One bolt is under the door on the pinch weld.





## Installation Instructions

### Front Fender Base

SKU: JK1000

2007-2015 Jeep JK 4 Door



6. The fender should be tightened down starting from the back and working your way forward. Be mindful when tightening down the fender bolts as the factory nut clips can be fragile.

7. Tighten down the rear most fender bolt that is located inside the door jam. Make sure the fender bracket is pushed as close to the vehicle as possible. The factory nut clip may be hooking the fender bracket, if so lift the fender bracket and push in before tightening this bolt.

8. The next bolt to be tightened is the second bolt in the door jam. Again the fender should be pushed as close to the vehicle as possible while tightening this bolt. The fender edge trim may preload against the frame in this step.



9. The third bolt to be tightened will be the front most bolt. Pull the nose of the fender out and away from the frame as much as possible and fully tighten the bolt that is located inside the wheel well and behind the headlight.



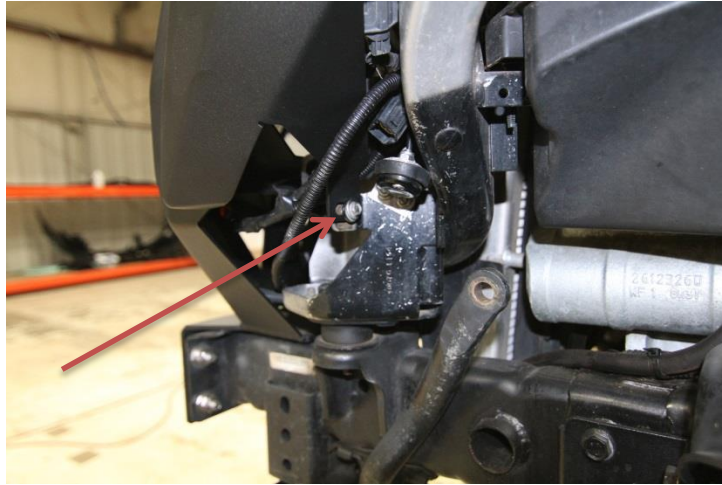


## Installation Instructions

Front Fender Base

SKU: JK1000

2007-2015 Jeep JK 4 Door



10. Fully tighten the remaining three bolts. Two bolts under the hood and one bolts on the pinch weld under the door.







## Installation Instructions

Front Fender Base

SKU: JK1000

2007-2015 Jeep JK 4 Door



**11.** Wire up the provided marker light to the factory marker light leads. Wire the resistor in-line with the marker light ground wire.

**Note:** The included led indicator light has the option to act as a turn signal is you wish to perform the conversion. Instructions readily available on the World Wide Web.

**12.** Tuck and secure the marker light wiring behind the fender using your preferred method.





## Installation Instructions

Front Fender Base

SKU: JK1000

2007-2015 Jeep JK 4 Door

### IV. Maintenance/Care

- Periodically check and tighten all nuts.
- Stripped, fractured, or bent bolts or nuts need to be replaced.



**More than expected... Better than expected.**

