



INSTALLATION MANUAL
STUBBY FRONT BUMPER
PRODUCT NUMBER: B195X
APPLICATION: 2007-2018 JEEP JK



IMPORTANT SAFETY GUIDE | Your safety and the safety of others is very important.

In order to help you make informed decisions about safety, we have provided the following warnings, safety precautions, installation instructions, and other important information to alert you to potential hazards that could hurt you or others.

Please do a job safety analysis before each task to identify potential hazards for your situation and remove/protect against them. Use own good judgment and take your time.

Check packaged materials immediately upon arrival to ensure that all listed parts are included and undamaged.

Read and understand all warnings, safety precautions, and instructions before installing this product.

SENSORS FIELD OF VIEW MAY BE ALTERED WITH USE OF THE REPLACEMENT BUMPER.

WARNINGS

- Failure to observe the following warnings and instructions provided in this manual could lead to severe injury and/or death.
- For professional installation only. Careless installation and/or operation can result in serious injury, death, and/or equipment damage. All liability for installation and use rests with the user or consumer.
- Fab Fours, Inc. only approves installing this product according to these written instructions with the hardware provided. Failure to install according to these instructions will invalidate the warranty. This includes, but is not limited to, using alternative installation methods, hardware, or materials.
- This product is for off road use only.

SAFETY PRECAUTIONS

- Always remove jewelry and wear eye protection.
- Always use extreme caution when jacking up a vehicle for work. Set emergency brake and use tire blocks. Locate and use the vehicle manufacturers designated lifting points. Use jack stands.
- Always use appropriate and adequate care in lifting components into place.
- Always ensure components will remain secure during installation and operation.
- Always wear safety glasses when installing this kit. A drilling operation will cause flying metal chips. Flying chips can cause serious eye injury.
- Always use extreme caution when drilling a vehicle. Always disconnect power before welding. Thoroughly inspect the area to be drilled (on both sides of material when possible) prior to drilling, and relocate any objects that may be damaged.
- Always use extreme caution when welding a vehicle. Thoroughly inspect the area to be welded (on both sides of material when possible) prior to welding, and relocate any objects that may be a fire hazard. When welding in a cab, make sure the interior surfaces are covered (e.g., welding blanket) and a fire extinguisher is at hand.
- Always use extreme caution when cutting and trimming during fitting.
- Always tighten all nuts and bolts securely per installation instructions.
- Always route electrical cables carefully. Avoid moving parts, components that become hot, and rough or sharp edges.
- Always insulate and protect all exposed wiring and electrical terminals.
- Perform regular inspections and maintenance on mounts and hardware.

TABLE OF CONTENTS

- 2 SAFETY / DISCLAIMER
- 3 TABLE OF CONTENTS
- 4 A MESSAGE FROM THE OWNER
- 5 GETTING STARTED
- 6 PROVIDED MATERIAL
- 7 DISASSEMBLY
- 11 INSTALLATION

A MESSAGE FROM THE OWNER



Fab Fours' was born out of a passion for customizing vehicles and a love of the outdoors. Our engineering team uses the latest 3D design software to turn new product ideas into reality. In our factory, designs come to life with the combination of cutting edge technology for metal cutting and forming and an American workforce that puts its' heart and pride into every product.

From design and manufacturing, to quality and delivery, Fab Fours' mission is to be the market leader for steel truck and jeep accessories. We make sure a quality product is delivered on time, more than expected, better than expected to our customers.

Enjoy your new Fab Fours product. Welcome to the family!

Ereg Higgs

FOUNDER, FAB FOURS

GETTING STARTED

Before you begin the installation process of your new Fab Fours product, we suggest laying out all materials and parts on a pad or protective surface.

Failure to fully account for all components before beginning installation may leave vehicle immobile until part is acquired. Refer to the next pages as an inventory check.



PROVIDED MATERIALS

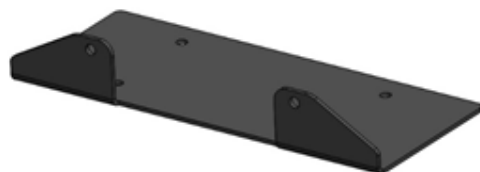


B195X-IM

50208-HW



22100



22067

HARDWARE KIT | 50208

FAB FOURS IDENTIFICATION	COMPONENT DESCRIPTION	QTY
50208-HW	7/16"-14, Yellow Zinc Hex Nut, Grade 8	8
50208-HW	7/16", Yellow Zinc Flat Washer, Grade 8	8
50208-HW	7/16", Yellow Zinc Lock Washer, Grade 8	8
50208-HW	#8 SAE Flat Washer, Zinc Steel	12
50208-HW	#8-32 Nylock Hex Nut, Zinc Steel	6
50208-HW	#8-32 Button Head Cap Bolt, Zinc Steel	6

TOOLS REQUIRED

- 11/16" Deep Socket wrench
- 18mm Deep Socket wrench
- 16mm Socket wrench
- 11/32" Open end wrench
- Socket Extension
- Socket swivel
- 3/32" Allen wrench
- Plastic body panel pry tool
- Phillips head screwdriver
- Painter's tape
- Metal cutting tool of your choice
- Black spray paint

ASSISTANCE

We recommend two people perform the installation as items are heavy and may need to be held in place while installing.

ORGANIZATION

Disassemble the vehicle where you can catalog and store everything. We suggest labeling and bagging all the OEM bolts when removing from the vehicle. Failure to keep track of parts could lead to an inability to properly reinstall components.

DISASSEMBLY

NOTE: Save all OEM parts until installation is complete!

1. Using painters' tape, cover the bottom 6" of the grille to prevent damaging the painted surface.
2. Using a plastic panel pry tool, remove the four (4) push pins located on the bottom of the bumper at the front of the skid plate.
3. Using a plastic panel pry tool, remove the two (2) push pins located on the bottom of the skid plate at the cross member
4. Using a Phillips head screwdriver and plastic panel pry tool, remove the two (2) threaded push pins located across the top of the plastic frame closeout panel. (Figure 1)

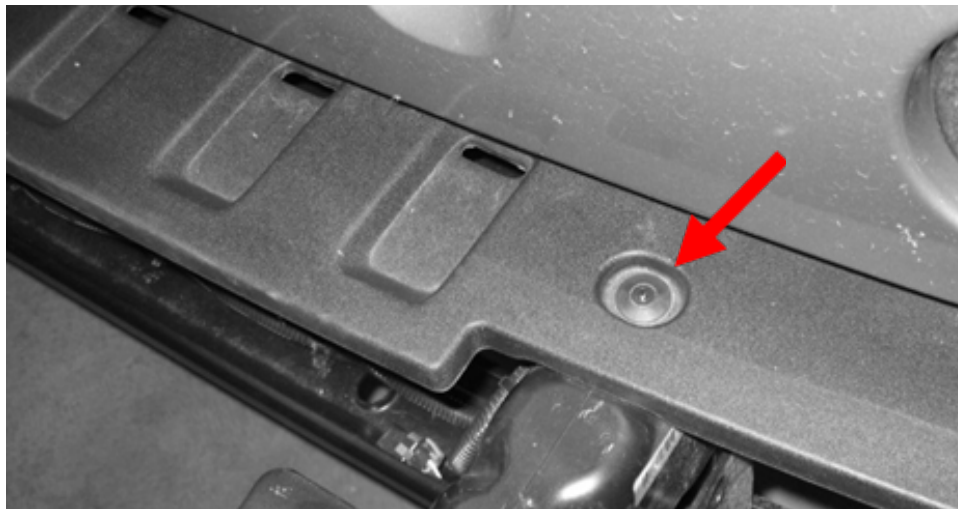


Figure 1

5. Using an 18mm deep socket wrench, remove the four (4) nuts attaching the bumper to the frame horns. (Figure 2)

6. Disconnect the fog lights from their harness if applicable.

7. Pull the bumper away from the vehicle and use a plastic panel pry tool to remove the clips that attach the fog light wiring harness to the bumper.

8. Remove the bumper from the vehicle and set aside.

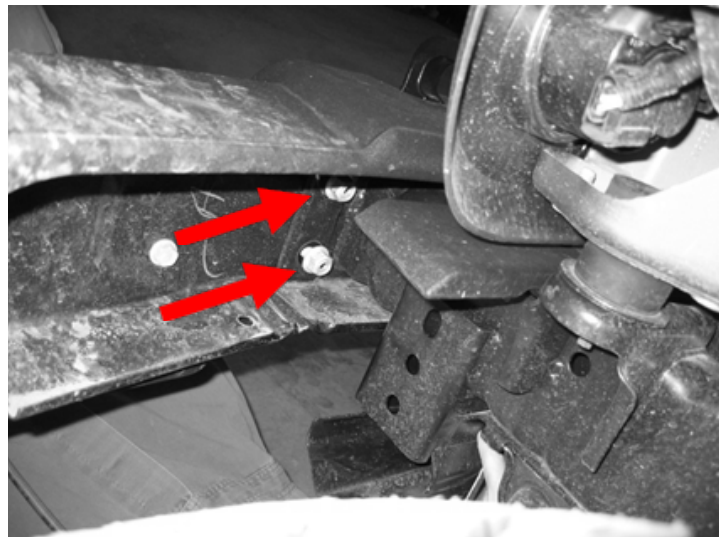


Figure 2

9. Using a Phillips head screwdriver, remove the four (4) screws per fog light housing that attach the fog lights to the bumper. Set the fog lights aside.

Note: If installing on a Rubicon model, the sway bar will need to be temporarily removed from the frame rails to allow access to mount the Fab Fours bumper.

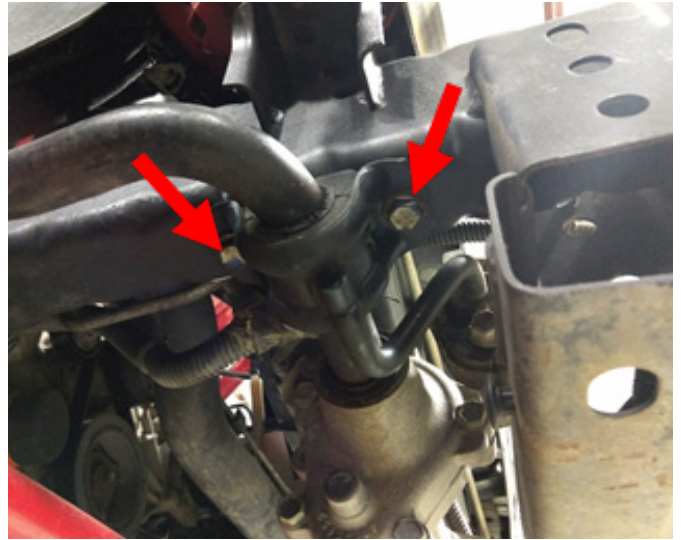


Figure 3

10. Using a 16mm socket wrench, loosen the four (4) bolts attaching the bar to the frame rails. (Figure 3)

11. Then, remove the one (1) bolt attaching the actuator to the rubber hanger. (Figure 4)



Figure 4

12. Disconnect the harness from the actuator and let the sway bar assembly drop out of the way.

Note: 07-11 models will need the OEM underrun bar trimmed on the ends. This will not decrease the effectiveness of this bar.

13. Using a metal cutting tool of your choice, trim the ends of the OEM underrun bar flush with the vertical sections. Coat the trimmed areas using black spray paint prevent rust. (Figure 5,6)

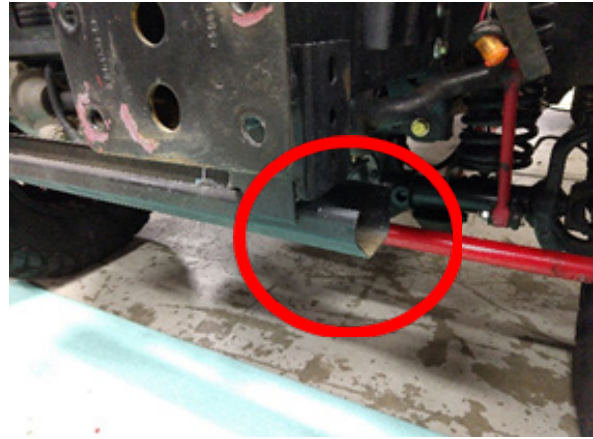


Figure 5

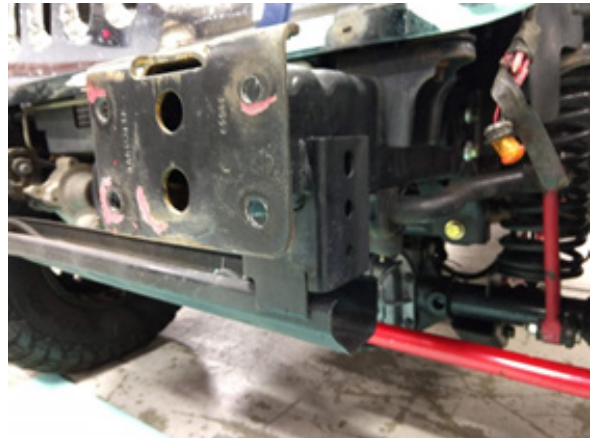


Figure 6

INSTALLATION

14. Using an 11/32" open end wrench, 3/32" Allen wrench, and three (3) of the provided #8-32 bolts, flat washers, and nylock nuts (50208-HW) reinstall the OEM fog lights to the brackets in the Fab Fours bumper. (22100) (Figure 7)

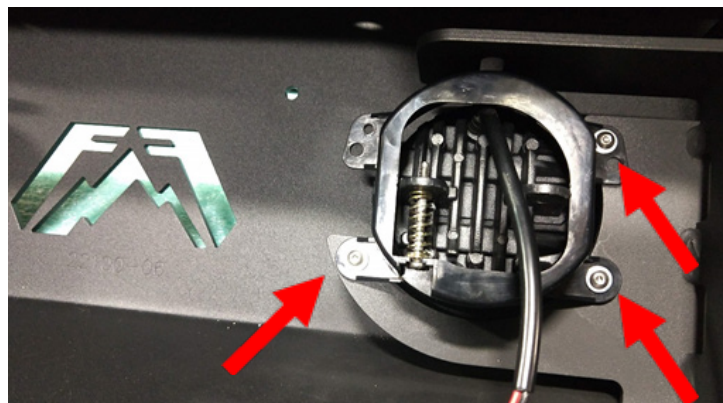


Figure 7

15. If installing winch, do so at this time. Use the provided fairlead bracket (22067) and the winch bolts to bolt through the top plate.

16. With assistance, place the Fab Fours bumper onto the frame horns passing the preinstalled studs through the holes in the frame horns that held the OEM bumper in place.

17. Using an 11/16" deep socket wrench, install the provided eight (8) 7/16" flat washer, lock washer, and hex nuts (50208-HW) onto the preinstalled 7/16" studs in the bumper. (Figure 8)



Figure 8

Note: 11-18 models will be tight to access the driver side inner mounting bolts due to the vacuum pump. A swivel may aid in the installation on these year models.

18. Reinstall the sway bar that was removed earlier (if applicable).

Maintenance/Care

- Periodically check and tighten all fasteners.
- Stripped, fractured, or bent bolts or nuts need to be replaced