



INSTALLATION MANUAL
MATRIX FRONT BUMPER
PRODUCT NUMBER: X505X
APPLICATION: 2020 GMC 2500



IMPORTANT SAFETY GUIDE | Your safety and the safety of others is very important.

In order to help you make informed decisions about safety, we have provided the following warnings, safety precautions, installation instructions, and other important information to alert you to potential hazards that could hurt you or others.

Please do a job safety analysis before each task to identify potential hazards for your situation and remove/protect against them. Use own good judgment and take your time.

Check packaged materials immediately upon arrival to ensure that all listed parts are included and undamaged.

Read and understand all warnings, safety precautions, and instructions before installing this product.

SENSORS FIELD OF VIEW MAY BE ALTERED WITH USE OF THE REPLACEMENT BUMPER.

WARNINGS

- Failure to observe the following warnings and instructions provided in this manual could lead to severe injury and/or death.
- For professional installation only. Careless installation and/or operation can result in serious injury, death, and/or equipment damage. All liability for installation and use rests with the user or consumer.
- Fab Fours, Inc. only approves installing this product according to these written instructions with the hardware provided. Failure to install according to these instructions will invalidate the warranty. This includes, but is not limited to, using alternative installation methods, hardware, or materials.
- This product is for off road use only.

SAFETY PRECAUTIONS

- Always remove jewelry and wear eye protection.
- Always use extreme caution when jacking up a vehicle for work. Set emergency brake and use tire blocks. Locate and use the vehicle manufacturers designated lifting points. Use jack stands.
- Always use appropriate and adequate care in lifting components into place.
- Always ensure components will remain secure during installation and operation.
- Always wear safety glasses when installing this kit. A drilling operation will cause flying metal chips. Flying chips can cause serious eye injury.
- Always use extreme caution when drilling a vehicle. Always disconnect power before welding. Thoroughly inspect the area to be drilled (on both sides of material when possible) prior to drilling, and relocate any objects that may be damaged.
- Always use extreme caution when welding a vehicle. Thoroughly inspect the area to be welded (on both sides of material when possible) prior to welding, and relocate any objects that may be a fire hazard. When welding in a cab, make sure the interior surfaces are covered (e.g., welding blanket) and a fire extinguisher is at hand.
- Always use extreme caution when cutting and trimming during fitting.
- Always tighten all nuts and bolts securely per installation instructions.
- Always route electrical cables carefully. Avoid moving parts, components that become hot, and rough or sharp edges.
- Always insulate and protect all exposed wiring and electrical terminals.
- Perform regular inspections and maintenance on mounts and hardware.

TABLE OF CONTENTS

- 2 SAFETY / DISCLAIMER
- 3 TABLE OF CONTENTS
- 4 A MESSAGE FROM THE OWNER
- 5 GETTING STARTED
- 6 PROVIDED MATERIAL
- 7 DISASSEMBLY
- 11 INSTALLATION
- 14 CONTACT

A MESSAGE FROM THE OWNER



Fab Fours' was born out of a passion for customizing vehicles and a love of the outdoors. Our engineering team uses the latest 3D design software to turn new product ideas into reality. In our factory, designs come to life with the combination of cutting edge technology for metal cutting and forming and an American workforce that puts its' heart and pride into every product.

From design and manufacturing, to quality and delivery, Fab Fours' mission is to be the market leader for steel truck and jeep accessories. We make sure a quality product is delivered on time, more than expected, better than expected to our customers.

Enjoy your new Fab Fours product. Welcome to the family!

Ereg Higgs

FOUNDER, FAB FOURS

GETTING STARTED

Before you begin the installation process of your new Fab Fours product, we suggest laying out all materials and parts on a pad or protective surface.

Failure to fully account for all components before beginning installation may leave vehicle immobile until part is acquired. Refer to the next pages as an inventory check.



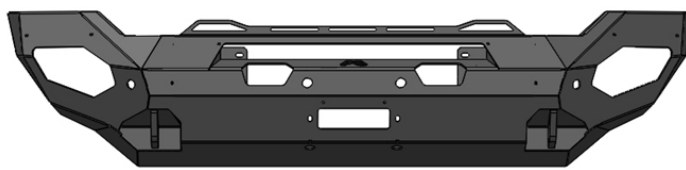
PROVIDED MATERIALS



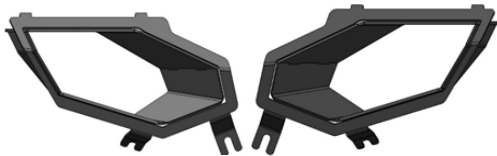
505X-IM

50225-HW

61632
QTY:2



22176-01



22178

22177



21871
QTY: 2



22174



22175

HARDWARE KIT | 50225

FAB FOURS IDENTIFICATION	COMPONENT DESCRIPTION	QTY
50225-HW	1/4"-20, Yellow Zinc Hex Cap Bolt, Grade 8	2
50225-HW	1/4"-20, Yellow Zinc Hex Nut, Grade 8	2
50225-HW	1/4", Yellow Zinc Flat Washer, Grade 8	4
50225-HW	1/4", Yellow Zinc Lock Washer, Grade 8	2
50225-HW	5/16"-18, Yellow Zinc Hex Cap Bolt, Grade 8	4
50225--HW	5/16", Stainless Steel Flat Washer	4
50225-HW	5/16", Yellow Zinc Lock Washer, Grade 8	4

TOOLS REQUIRED

- 7mm socket wrench
- 10mm socket wrench
- 15mm socket wrench
- 18mm socket wrench
- Body pry tool
- 3/8" socket wrench
- 5/16" socket wrench

ASSISTANCE

We recommend two people perform the installation as items are heavy and may need to be held in place while installing.

ORGANIZATION

Disassemble the vehicle where you can catalog and store everything. We suggest labeling and bagging all the OEM bolts when removing from the vehicle. Failure to keep track of parts could lead to an inability to properly reinstall components.

DISASSEMBLY

NOTE: Save all OEM parts until installation is complete!

1. Open the hood and remove the nine (9) push pins holding the grill cover on using a body pry tool. Use a T15H star socket wrench to remove the two (2) bolts holding the hood latch on and remove the hood latch. Remove the grill cover from the truck and set aside for later install. (Figure 1)

2. Use a 10mm socket wrench to remove the four (4) bolts holding the top of the grill to the truck. Carefully pull the grill off the truck by disengaging the body clips. (Figure 2)

3. Use a 15mm socket wrench underneath the bumper to remove the four (4) bumper support bracket bolts. (Figure 3)



Figure 1



Figure 2



Figure 3

4. Use an 18mm socket wrench to remove four (4) mounting bolts. (Figure 4)

5. Unplug the four (4) bumper sensor harnesses before removing the bumper from the truck.

6. Use a 7mm socket wrench to remove the lower louvers from the mounting brackets. (Figure 5)

7. Use a 15mm socket wrench to remove the four (4) bolts holding the mounting brackets on. (Figure 6)



Figure 4

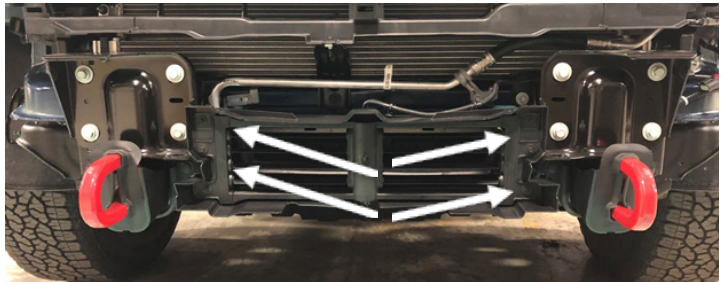


Figure 5

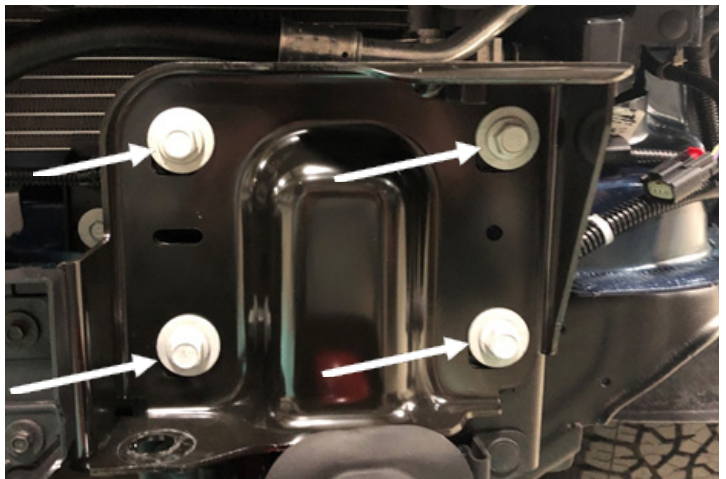


Figure 6

8. Remove the clip nots from the mounting brackets using a pair of pliers to press the clips in. set aside for later use with the 7mm bolts. (Figure 7)

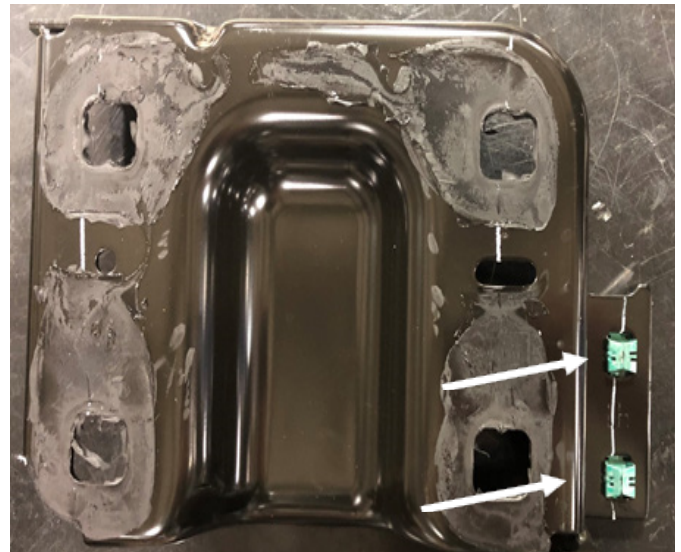


Figure 7

9. Use an 18mm socket wrench to remove the two (2) bolts holding the factory tow hooks onto the frame. (Figure 8)

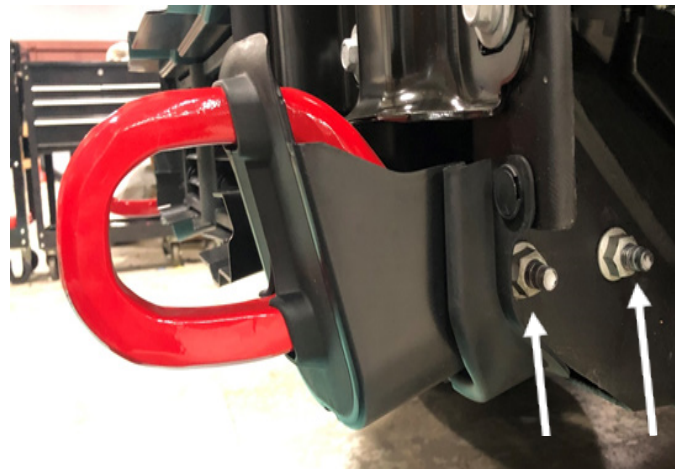


Figure 8

10. Use a 15mm socket wrench to remove the nine (9) bolts holding the bumper structure on. Remove the metal structure from the bumper to access the sensor harness. (Figure 9)



Figure 9

11. Unclip all the plugs holding the sensor harness to the bumper using a body pry tool. Carefully remove the sensor from the housing by pushing the housing apart and removing the sensor by pushing up. (Figure 10)

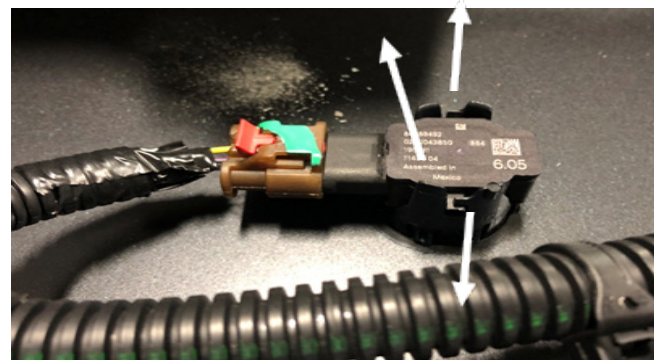


Figure 10

12. Remove the sensor housings from the bumper by pressing the four (4) clips in and pushing it out of the bumper. Make sure to mark what side of the bumper the housing came out of to install back into the Fab Fours bumper. (Figure 11)

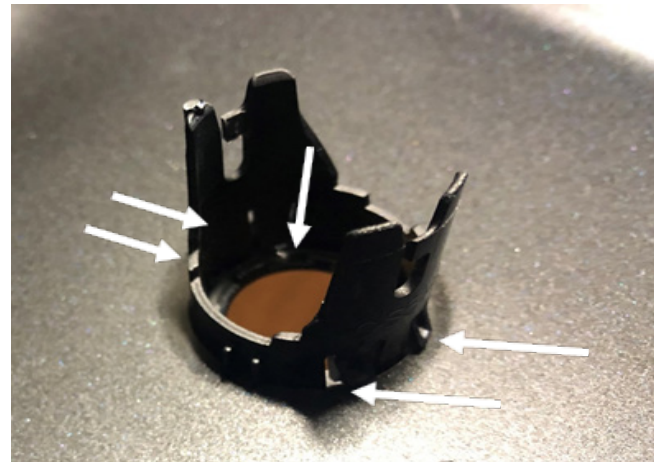


Figure 11

13. Remove the engine heater plug from the bumper by pressing in on the spring and turning clockwise. (Figure 12)



Figure 12

INSTALLATION

14. Install the reinforcement brackets (22174 and 22175) using the OEM tow hook hardware on the frame. (Figure 13)

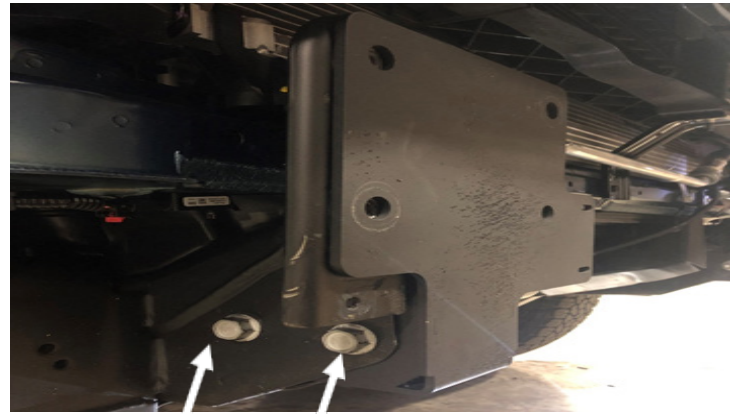


Figure 13

15. Use the hardware removed during step 8 to install the louvers removed during step 6 between the two brackets. Tighten using the 7mm socket wrench. (Figure 14)



Figure 14

16. Carefully install the sensors and sensor housings into their respective locations making sure the harness plug is on the passenger side of the bumper. (Figure 15-16)



Figure 15

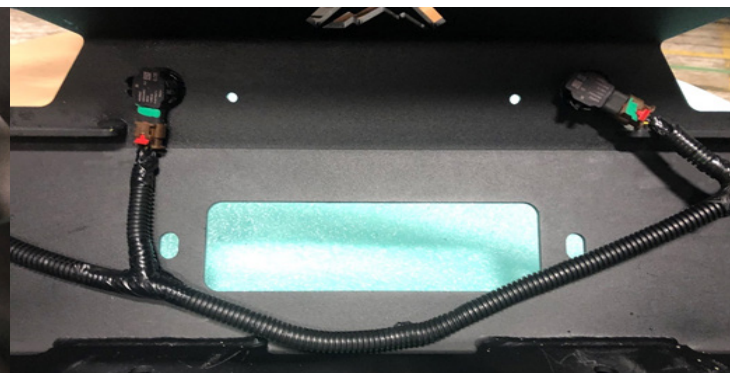


Figure 16

17. If installing a 30" light bar: Do so now using the two provided L-brackets along with the 1/4" mounting hardware (50225-HW). (Figure 17)

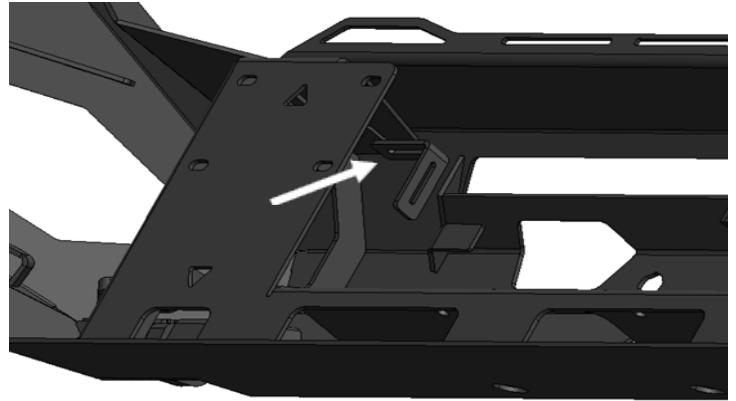


Figure 17

18. With assistance, hold the bumper up to the reinforcement brackets and use a 15mm socket wrench to install the eight (8) OEM bolts removed during step 7. (Figure 18)



Figure 18

19. Install the light boxes (22177 and 22178) by sliding the tabs into their slot brackets and using a 1/2" socket wrench to install the two (2) 5/16" bolts, lock washers and fender washers (50225-HW). (Figure 19)

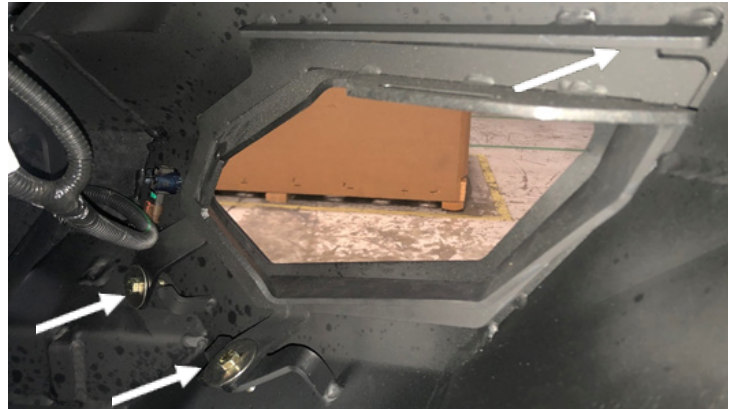


Figure 19

20. Reinstall the engine heater plug in the side of the mounting bracket by reversing the steps in step 13. Plug in the heater plug, sensor harness and lower louvers. (Figure 20-21)



Figure 20

23. Fully tighten all mounting hardware.



Figure 21

Learn more about off-road bumpers we have.