



.....
SAFETY
.....

Your safety and the safety of others is very important.

- In order to help you make informed decisions about safety, we have provided installation instructions and other information.
- These instructions alert you to potential hazards that could hurt you or others.
- Please do a job safety analysis (JSA) before each task to identify potential hazards for your situation and remove/protect against them.
- You must use your own good judgment, and take your time.

Read and understand all safety precautions and instructions before installing this product.

THIS PRODUCT IS FOR OFFROAD USE ONLY. ALL LIABILITY FOR INSTALLATION AND USE RESTS WITH THE OWNER.

CARELESS INSTALLATION AND OPERATION CAN RESULT IN SERIOUS INJURY OR EQUIPMENT DAMAGE.

.....
Injury hazard
.....

Failure to observe these instructions could lead to severe injury or death.

- Always** remove jewelry and wear eye protection.
- Always** use extreme caution when jacking up a vehicle for work. Set emergency brake and use tire blocks. Locate and use the vehicle manufacturers designated lifting points. Use jack stands.
- Always** use appropriate and adequate care in lifting components into place.
- Always** insure components will remain secure during installation and operation.
- Always** wear safety glasses when installing this kit. A drilling operation will cause flying metal chips. Flying chips can cause serious eye injury.
- Always** use extreme caution when drilling on a vehicle. Thoroughly inspect the area to be drilled (on both sides of material) prior to drilling, and relocate any objects that may be damaged.
- Always** use extreme caution when cutting and trimming during fitting.
- Always** tighten all nuts and bolts securely per installation instructions.
- Always** route electrical cables carefully. Avoid moving parts, components that become hot and rough or sharp edges.
- Always** insulate and protect all exposed wiring and electrical terminals.
- Always** perform regular inspections and maintenance on mounts and related hardware.





Installation Instructions

Ford F150 Black Steel/Elite Rear Bumper

Product Number: T1750, U1750
Application: 2009+ Ford F150 ½ Ton Truck

I. Tools Required

- Socket Wrench with Extension
- Breaker Bar
- 3/4" & 18mm Sockets
- Flat and Phillips Head Screw Drivers
- 3/4" Box End Wrench
- Drill and 7/16 drill bit
- Floor Jack and wood block

II. Removal of Stock Bumper

1. Unplug the Factory License Plate lights from the back side of the light housing from underneath the truck. Turn counter clockwise until loose. Secure up and out of harm's way.
2. If equipped, disconnect the wiring harness from the back up sensors. This can either be done by unplugging the connectors at each sensor or removing the sensor from the trim piece holding them into the bumper.
3. Remove the 7 plastic Christmas tree plugs holding the harness to the inside of the bumper. Fish the harness out of the bumper and out of the way.
4. Remove the 6 bolts (3 per side) holding the factory bumper to the receiver hitch using a 10mm socket.

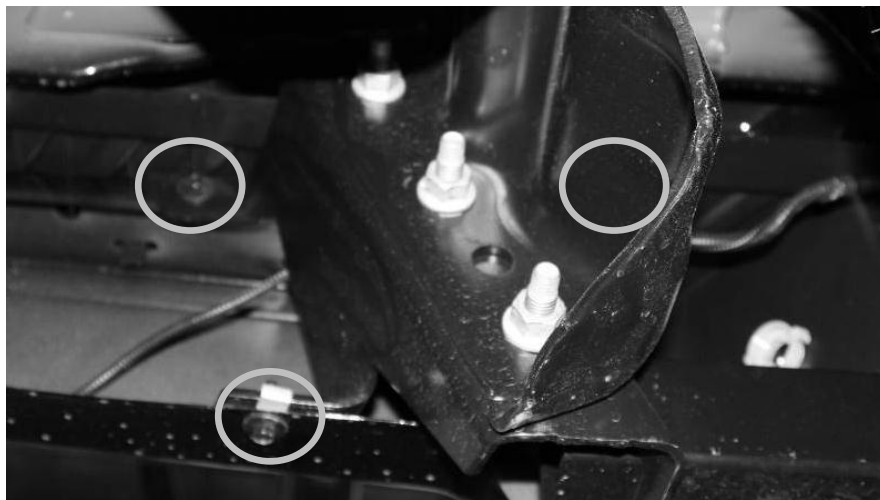


Figure 1 - FASTENER LOCATIONS (3rd HIDDEN BY BRACKET)

5. Using two people each grasping one corner of the bumper lift and rotate towards the back of the vehicle. Note: there are two plastic locating finger that pass through the hitch that need to be freed for the bumper to come off.
6. Your truck is now ready to have the Fab Fours Rear Bumper Installed!





Installation Instructions

Ford F150 Black Steel/Elite Rear Bumper

Product Number: T1750, U1750
Application: 2009+ Ford F150 1/2 Ton Truck

III. Rear Bumper Installation

1. Using a small flat head screw driver remove the spring nut from the lower bumper mounting hole.
2. Use a drill and 7/16th bit to enlarge the three mounting holes to allow for the upgraded hardware.

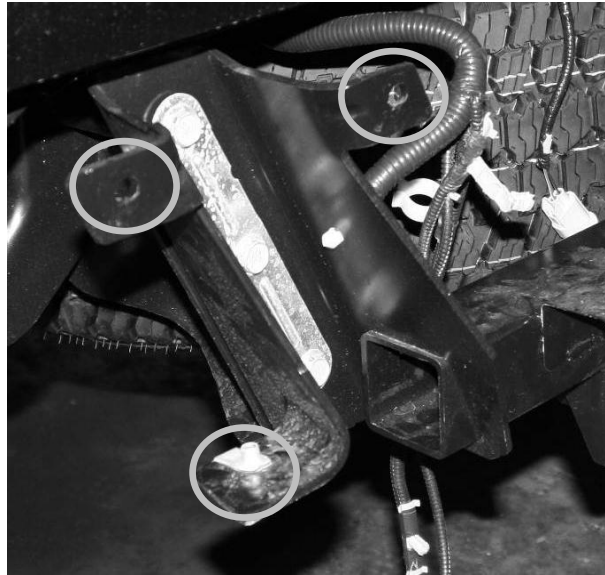


Figure 2 - DRILLING LOCATIONS

3. With the assistance of a floor jack, hoist or multiple assistants, lift the Black Steel bumper into place. Install using the hardware provided in the T1750-hw bolt kit. Do not fully tighten the fasteners.
4. Level and align the bumper in relation to the truck bed. Fully tighten all fasteners.
5. Slowly lower the tailgate to ensure there will be no interference. If required, loosen the mounting bolts and adjust alignment of the bumper.
6. Install tag light into the 1 1/4" hole provided in the center section. The powder coating may need to be removed from the hole for proper grounding. Connect wire into the hot wire of OEM tag light circuit. Verify operation.
7. Reinstall license plate with provided plastic inserts
8. Install grommets into sensor holes. If equipped, insert sensors from the back side. If not equipped, install provided plugs into the grommets.
9. Insert light grommets into oval cut-outs and press lights in from the front. Wire as desired.
10. Secure all loose wiring and harnesses to the frame or bumper with zip ties.





Installation Instructions

Ford F150 Black Steel/Elite Rear Bumper
Product Number: T1750, U1750
Application: 2009+ Ford F150 ½ Ton Truck

IV. Maintenance/Care

- Periodically check and tighten all fasteners.
- Stripped, fractured, or bent bolts or nuts need to be replaced.
- After washing of the vehicle make sure to fully dry all surfaces



More than expected... Better than expected

