



INSTALLATION MANUAL
MATRIX FRONT BUMPER
PRODUCT NUMBER: X405X
APPLICATION: 2019 CHEVY 1500



IMPORTANT SAFETY GUIDE | Your safety and the safety of others is very important.

In order to help you make informed decisions about safety, we have provided the following warnings, safety precautions, installation instructions, and other important information to alert you to potential hazards that could hurt you or others.

Please do a job safety analysis before each task to identify potential hazards for your situation and remove/protect against them. Use own good judgment and take your time.

Check packaged materials immediately upon arrival to ensure that all listed parts are included and undamaged.

Read and understand all warnings, safety precautions, and instructions before installing this product.

SENSORS FIELD OF VIEW WILL BE ALTERED WITH USE OF THE REPLACEMENT BUMPER.

WARNINGS

- Failure to observe the following warnings and instructions provided in this manual could lead to severe injury and/or death.
- For professional installation only. Careless installation and/or operation can result in serious injury, death, and/or equipment damage. All liability for installation and use rests with the user or consumer.
- Fab Fours, Inc. only approves installing this product according to these written instructions with the hardware provided. Failure to install according to these instructions will invalidate the warranty. This includes, but is not limited to, using alternative installation methods, hardware, or materials.
- This product is for off road use only.

SAFETY PRECAUTIONS

- Always remove jewelry and wear eye protection.
- Always use extreme caution when jacking up a vehicle for work. Set emergency brake and use tire blocks. Locate and use the vehicle manufacturers designated lifting points. Use jack stands.
- Always use appropriate and adequate care in lifting components into place.
- Always ensure components will remain secure during installation and operation.
- Always wear safety glasses when installing this kit. A drilling operation will cause flying metal chips. Flying chips can cause serious eye injury.
- Always use extreme caution when drilling a vehicle. Always disconnect power before welding. Thoroughly inspect the area to be drilled (on both sides of material when possible) prior to drilling, and relocate any objects that may be damaged.
- Always use extreme caution when welding a vehicle. Thoroughly inspect the area to be welded (on both sides of material when possible) prior to welding, and relocate any objects that may be a fire hazard. When welding in a cab, make sure the interior surfaces are covered (e.g., welding blanket) and a fire extinguisher is at hand.
- Always use extreme caution when cutting and trimming during fitting.
- Always tighten all nuts and bolts securely per installation instructions.
- Always route electrical cables carefully. Avoid moving parts, components that become hot, and rough or sharp edges.
- Always insulate and protect all exposed wiring and electrical terminals.
- Perform regular inspections and maintenance on mounts and hardware.

TABLE OF CONTENTS

2	SAFETY / DISCLAIMER
3	TABLE OF CONTENTS
4	A MESSAGE FROM THE OWNER
5	GETTING STARTED
6	PROVIDED MATERIAL
8	DISASSEMBLY
11	INSTALLATION

A MESSAGE FROM THE OWNER



Fab Fours' was born out of a passion for customizing vehicles and a love for the outdoors. Our engineering team uses the latest 3D design software to turn new product ideas into reality. In our factory, designs come to life with the combination of cutting edge technology for metal cutting and forming and an American workforce that puts its' heart and pride into every product.

From design and manufacturing, to quality and delivery, Fab Fours' mission is to be the market leader for steel truck and jeep accessories. We make sure a quality product is delivered on time, more than expected, better than expected to our customers.

Enjoy your new Fab Fours product. Welcome to the family!

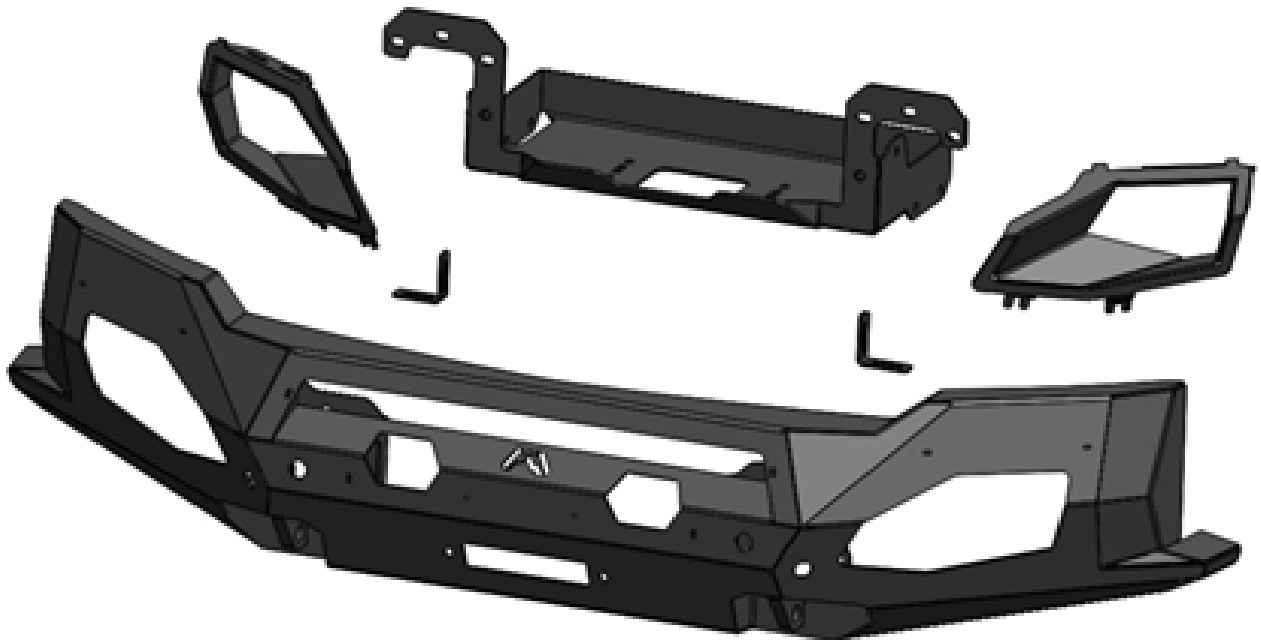
Ereg Higgs

FOUNDER, FAB FOURS

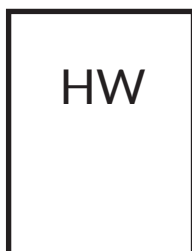
GETTING STARTED

Before you begin the installation process of your new Fab Fours product, we suggest laying out all materials and parts on a pad or protective surface.

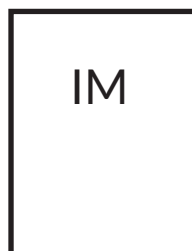
Failure to fully account for all components before beginning installation may leave vehicle immobile until part is acquired. Refer to the next pages as an inventory check.



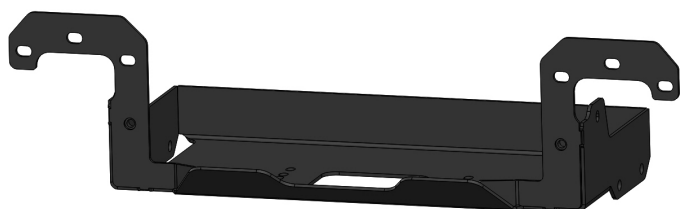
PROVIDED MATERIALS



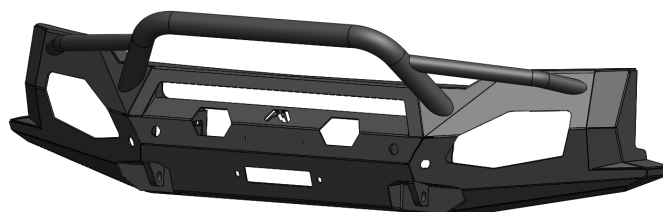
50179-HW



X405X-IM



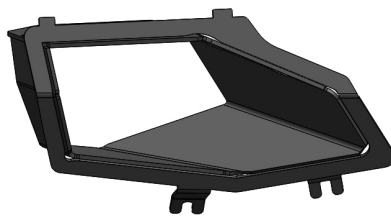
21877



21874



21875



21876



21871
QTY: 2

HARDWARE KIT | 50179

FAB FOURS IDENTIFICATION	COMPONENT DESCRIPTION	QTY
50179-HW	1/4"-20, Yellow Zinc Hex Cap Bolt, Grade 8	2
50179-HW	1/4"-20, Yellow Zinc Hex Nut, Grade 8	2
50179-HW	1/4", Yellow Zinc Flat Washer, Grade 8	4
50179-HW	1/4", Yellow Zinc Lock Washer, Grade 8	2
50179-HW	5/16"-18, Yellow Zinc Hex Cap Bolt, Grade 8	4
50179-HW	5/16", Stainless Steel Flat Washer	4
50179-HW	5/16", Yellow Zinc Lock Washer, Grade 8	4
50179-HW	7/16"-14 x 1.25", Yellow Zinc Hex Cap Bolt, Grade 8	10
50179-HW	7/16"-14, Yellow Zinc Hex Nut, Grade 8	12
50179-HW	7/16", Yellow Zinc Lock Washer, Grade 8	14
50179-HW	7/16", Yellow Zinc Flat Washer, Grade 8	26
50179-HW	7/16"-14 x 4", Yellow Zinc Hex Cap Bolt, Grade 8	4

TOOLS REQUIRED

- Plastic panel pry tool
- 15mm socket wrench
- 18mm socket wrench
- 1/2" socket wrench
- 5/8" socket wrench
- 11/16" socket wrench

ASSISTANCE

We recommend two people perform the installation as items are heavy and may need to be held in place while installing.

ORGANIZATION

Disassemble the vehicle where you can catalog and store everything. We suggest labeling and bagging all the OEM bolts when removing from the vehicle. Failure to keep track of parts could lead to an inability to properly reinstall components.

DISASSEMBLY

Note: Save all OEM parts until installation is complete!

1. Disconnect the electrical connector on the passenger side of the bumper by pulling on the red tab and depressing the locking clip. (Figure 1)



Figure 1

2. Using an 18mm socket wrench, locate and remove the two (2) bolts on both the driver and passenger side holding the intermediate bumper brackets to the bumper. (Figure 2)



Figure 2

3. Using a 15mm socket wrench, remove the two (2) bolts on both the driver and passenger side holding the outer bumper reinforcement bars to the frame. (Figure 3)



Figure 3

4. Using an 18mm socket wrench, remove the two (2) bolts attaching the lower portion of the bumper to the underside of the frame rails. (Figure 4)



Figure 4

5. With the bumper removed from the vehicle, use a 15mm socket wrench to remove the intermediate brackets from the frame by removing the three (3) bolts on both the driver and passenger side. (Figure 5)



Figure 5

6. Remove the OEM electrical harness from bumper by removing the push pins. (Figure 6-7)



Figure 6



Figure 7

7. Disconnect the electrical harness from the fog lights in the bumper. (Figure 8)



Figure 8

8. Remove the sensor from the sensor housing by expanding both sides of the sensor housing and lifting up. (Figure 9-10)



Figure 9



Figure 10

9. Remove the sensor housing from the bumper by depressing the four (4) tabs while pulling outward from the outside of the bumper. (Figure 11-12)



Figure 11



Figure 12

INSTALLATION

NOTE: Use painters tape to protect any areas of the vehicle that may contact the Fab Fours product during installation.

NOTE: If installing any lights into the bumper, they can be installed prior to bumper installation. Follow the lighting manufacturer's instructions for installation. Two adjustable angle brackets are included for the center 20" opening.

1. Using 1/2" socket wrench, install the two light boxes (21875 and 21876) by inserting the two tabs into the slots and bolting the lower flanges with the provided 5/16" bolts, flat and lock washers (50179-HW). (Figure 13)

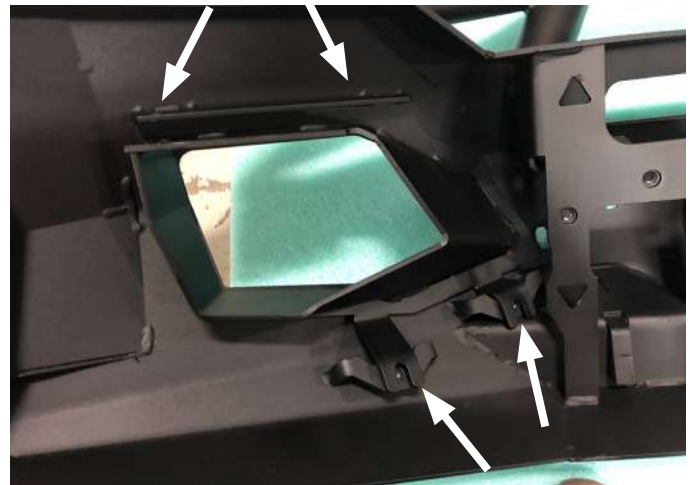


Figure 13

2. To install the sensors into the bumper, take the sensor housings and install them into their respective hole location. From inside the bumper, carefully install the sensors by pressing them into the housing and locking the clips around the sensor. (Figure 14-15)



Figure 14



Figure 15

3. Zip tie the sensor harness as shown. Make sure that the harness plug is on the passenger side of the bumper for install. (Figure 16)



Figure 16

4. If applicable: install your 30" light bar at this time using the provided L-brackets (21871) and 1/4" bolts, 1/4" flat and lock washers, and 1/4" nuts (50170-HW). (Figure 17)



Figure 17

5. With assistance, hold the winch tray to the frame rails and install the provided two (2) 7/16" x 1.25" yellow zinc bolts with flat and lock washers and nuts along with four (4) 7/16" x 4" bolts flat and lock washers with nuts on both driver and passenger side (50179-HW). (Figure 18-19)

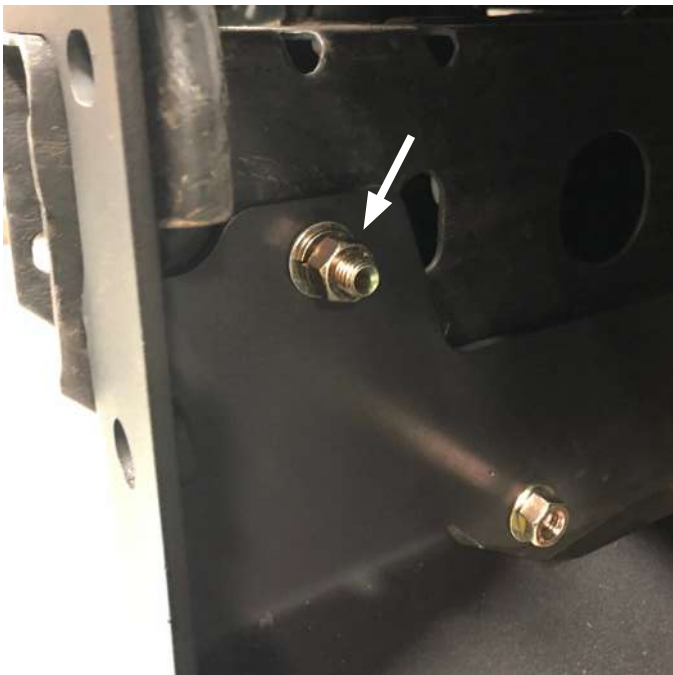


Figure 18



Figure 19

6. Before you tighten the winch tray bolts, insure that the holes on the frame horn are aligned so that a 7/16" bolt can fit through it. Once aligned, use a 11/16" and 5/8" socket wrench to tighten all the winch tray bolts. (Figure 20)

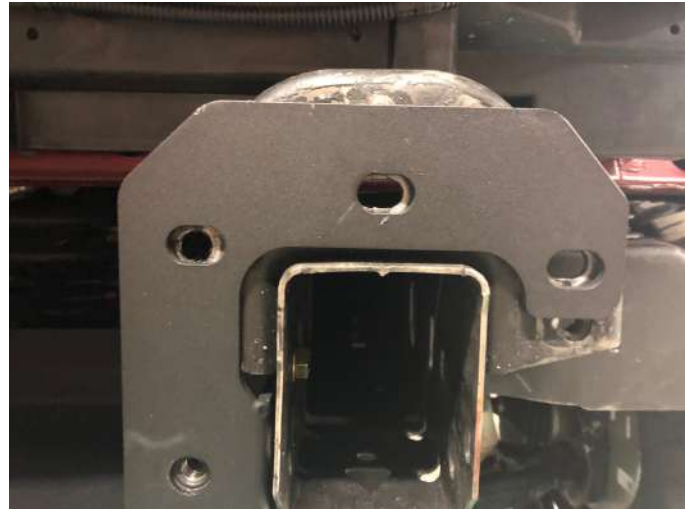


Figure 20

7. With assistance hold the bumper to the winch plate and loosely install using the provided eight (8) 7/16" x 1.25" bolts, flat and lock washers with nuts (50179-HW). Once you have the bumper in position, fully tighten all mounting hardware using an 11/16" and 5/8" socket wrench. (Figure 21-22)



Figure 21



Figure 22

**“IF YOU’RE LOOKING FOR MORE OF THE SAME,
THEN YOU’VE COME TO THE WRONG PLACE.”**

- GREG HIGGS

