



Installation Instructions

Premium Front Sensor Bumper

Product Number: K3860, K3861, K3862,
R3860, R3861, R3862

Application: 2016 CHEVY 1500

SAFETY

Your safety and the safety of others is very important.

- In order to help you make informed decisions about safety, we have provided installation instructions and other information.
- These instructions alert you to potential hazards that could hurt you or others.
- Please do a job safety analysis (JSA) before each task to identify potential hazards for your situation and remove/protect against them.
- You must use your own good judgment, and take your time.

Read and understand all safety precautions and instructions before installing this product.

**THIS PRODUCT IS FOR OFFROAD USE ONLY. ALL LIABILITY FOR
INSTALLATION AND USE RESTS WITH THE OWNER.**

**CARELESS INSTALLATION AND OPERATION CAN RESULT IN SERIOUS INJURY
OR EQUIPMENT DAMAGE.**

Injury hazard

Failure to observe these instructions could lead to severe injury or death.

- Always remove jewelry and wear eye protection.
- Always use extreme caution when jacking up a vehicle for work. Set emergency brake and use tire blocks. Locate and use the vehicle manufacturers designated lifting points. Use jack stands.
- Always use appropriate and adequate care in lifting components into place.
- Always insure components will remain secure during installation and operation.
- Always wear safety glasses when installing this kit. A drilling operation will cause flying metal chips. Flying chips can cause serious eye injury.
- Always use extreme caution when drilling on a vehicle. Thoroughly inspect the area to be drilled (on both sides of material) prior to drilling, and relocate any objects that may be damaged.
- Always use extreme caution when cutting and trimming during fitting.
- Always tighten all nuts and bolts securely per installation instructions.
- Always route electrical cables carefully. Avoid moving parts, components that become hot and rough or sharp edges.
- Always insulate and protect all exposed wiring and electrical terminals.
- Always perform regular inspections and maintenance on mounts and related hardware.





Installation Instructions Premium Front Sensor Bumper

Product Number: K3860, K3861, K3862,
R3860, R3861, R3862

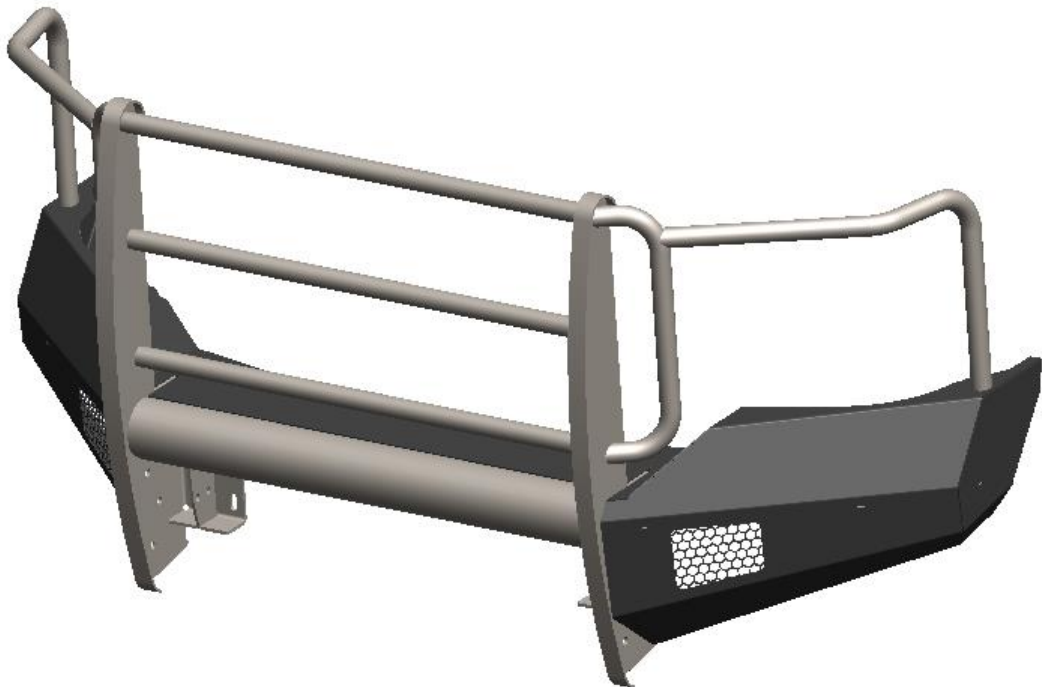
Application: 2016 CHEVY 1500

I. Overview

Congratulations on your new purchase of the industries' best and most stylish front bumper available for the 2016 Chevy 1500! This bumper has been engineered for strength while keeping the weight down.

Your front bumper designed in 3-D from digitized data, CNC laser cut, fabricated, and powder coated... all in the U.S.A.

Enjoy the fit and finish of a quality CHEVY 1500 Front Bumper from Fab Fours Inc.





Installation Instructions Premium Front Sensor Bumper

Product Number: K3860, K3861, K3862,
R3860, R3861, R3862

Application: 2016 CHEVY 1500

Parts List

- K/R386X replacement bumper
- BRACKETS
- K186X-HW KIT
- 4 Stud Plates
- Light Kitting [i.e. 20090(2), 61349(2), 61350(2), 20318-08(1), 20318-09(1)]
- Instruction Manual

Tools Required

- Socket Wrench with Extension (Ratcheting wrenches may also be convenient)
- 7mm , 15mm , 18mm, 19mm, 3/4" Sockets and Box End Wrenches
- T15 torx
- Flat Head Screw Drivers
- Floor Jack and wood block.
- Panel clip removal tool ('Christmas tree fastener removal tool')

I. Removal of OEM Bumper

Note: Save all OEM parts until installation is complete!

- A. Open hood and locate push pins on radiator cover. Using a panel clip removal tool, pull the head of the push pins up, remove push pin and lift radiator cover off. This will allow access to top Grille bolts (Ref. Figure 1).



Installation Instructions Premium Front Sensor Bumper

Product Number: K3860, K3861, K3862,
R3860, R3861, R3862

Application: 2016 CHEVY 1500



Figure 1

- B. Remove the fasteners connecting the grille to the frame. 4x15mm bolts, indicated by the red SQUARES, are located at the top of the grille. At this point 6 clips, indicated by red circles, are holding the grille in place. Starting around the center of grill carefully pull grille away from truck (Ref. Figure 2a-b).**

Installation Instructions Premium Front Sensor Bumper

Product Number: K3860, K3861, K3862,
R3860, R3861, R3862

Application: 2016 CHEVY 1500



Figure 2a

Installation Instructions Premium Front Sensor Bumper

Product Number: K3860, K3861, K3862,
R3860, R3861, R3862

Application: 2016 CHEVY 1500

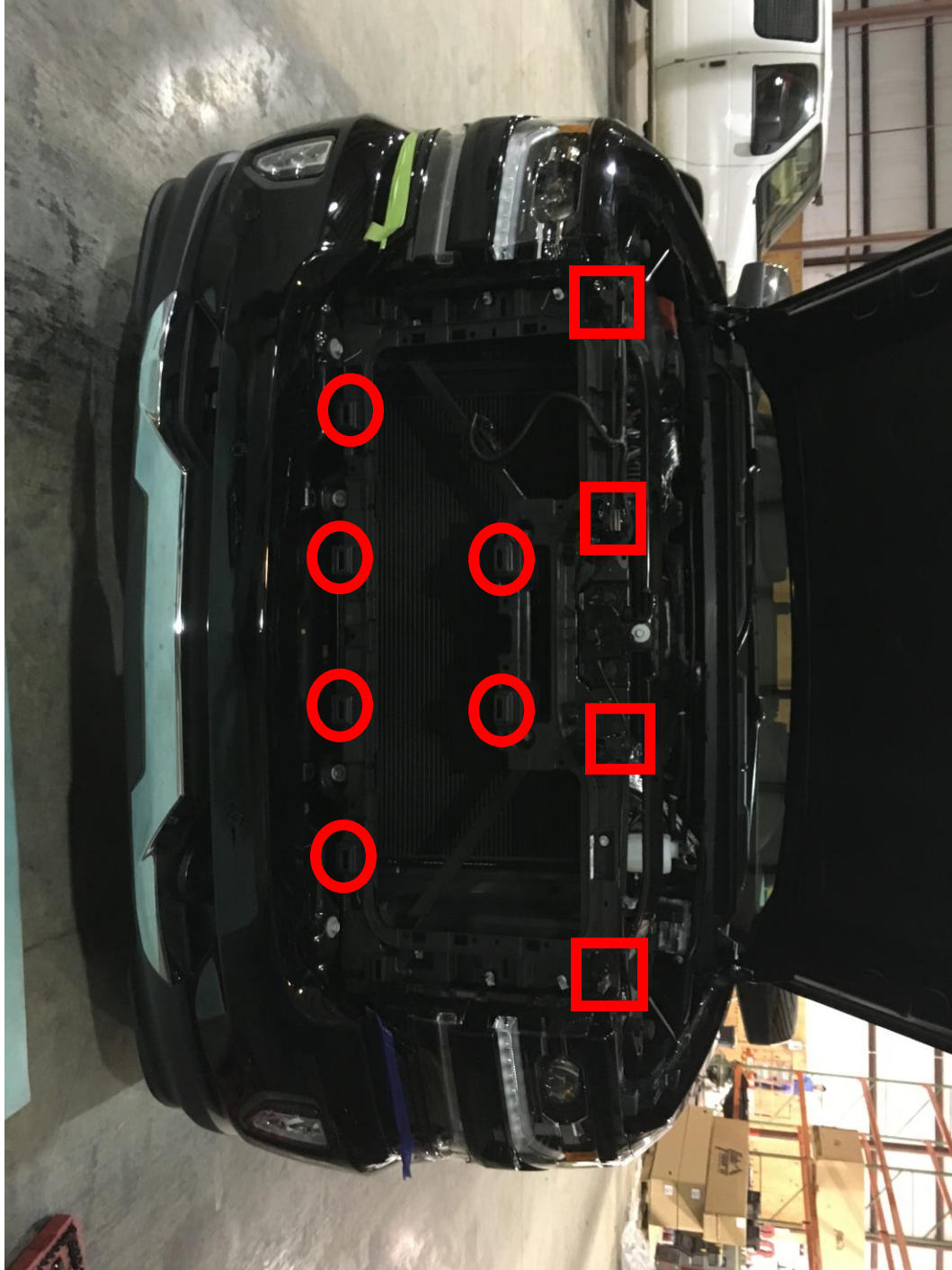


Figure 2b

Installation Instructions Premium Front Sensor Bumper

Product Number: K3860, K3861, K3862,
R3860, R3861, R3862

Application: 2016 CHEVY 1500

- C. Remove bumper support bar (ref 3a-c). Using 18mm socket remove the single bolt connecting bar to bumper and 15mm socket to remove 2 bolts connecting bar to frame. Remove the fasteners connecting the bumper to the bracket. Using a 18mm socket/wrench remove bolts from the top and bottom of bracket connected to the bumper (ref 3c). Pull bumper away from vehicle. Using 22mm socket remove forward facing bolts holding bracket to frame. Repeat process on each side of vehicle.



Figure 3a

Installation Instructions Premium Front Sensor Bumper

Product Number: K3860, K3861, K3862,
R3860, R3861, R3862

Application: 2016 CHEVY 1500



Figure 3b



Installation Instructions

Premium Front Sensor Bumper

Product Number: K3860, K3861, K3862,
R3860, R3861, R3862

Application: 2016 CHEVY 1500

Figure 3c

- D. Remove bolts securing tow hooks to frame. Location is indicated in image below by green rectangle (Ref. 4b).

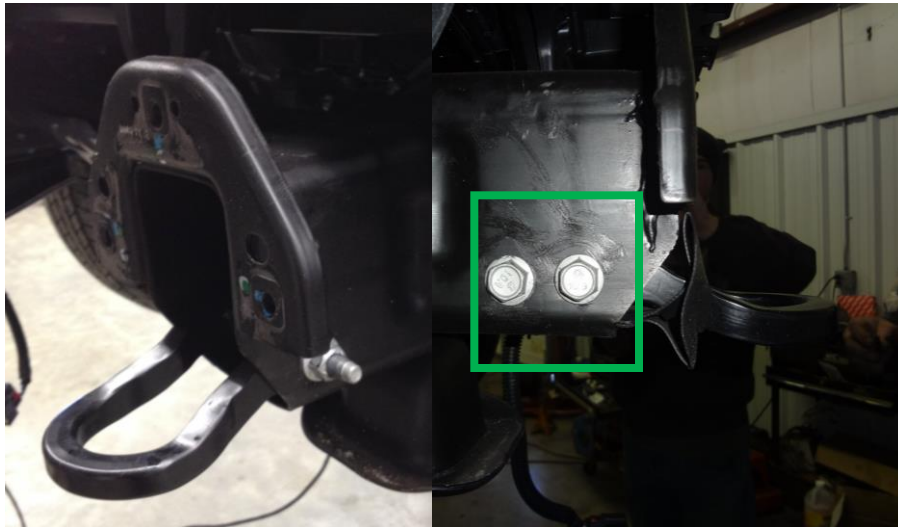


Figure 4a

Figure 4b

- E. Remove OEM electrical harness from bumper. Disconnect harness from fog lights and sensors. Pop out plastic clips holding harness to bumper on both sides and carefully pull away.

Installation Instructions Premium Front Sensor Bumper

Product Number: K3860, K3861, K3862,
R3860, R3861, R3862

Application: 2016 CHEVY 1500

- F. Remove plastic valence support on each side of truck.
Unscrew using 7mm hex head from inside of support and t15 torx from side facing wheel well, then carefully pull away from vehicle.

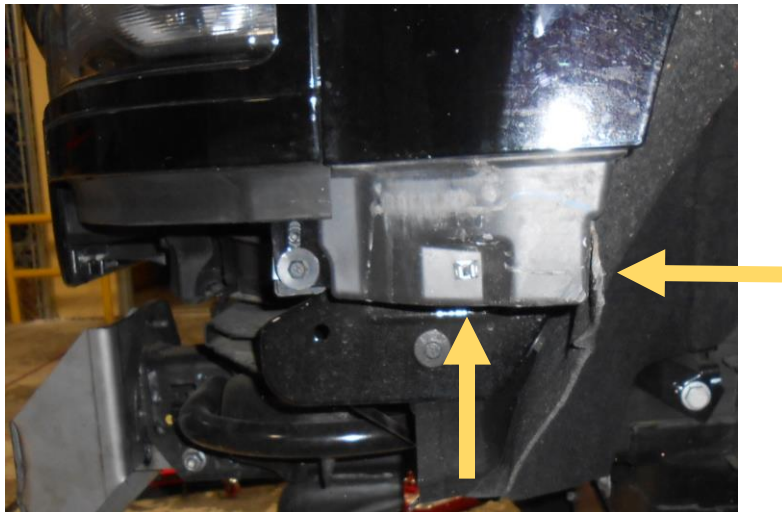


Figure 5a (before removal)

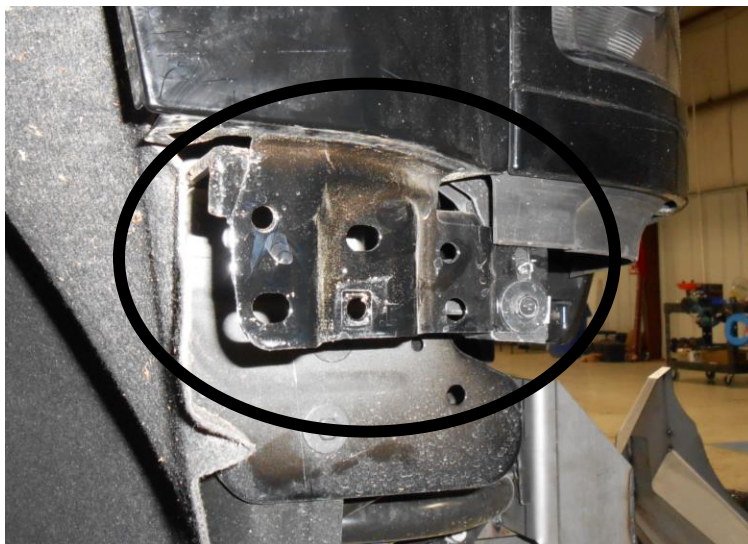


Figure 5a (after removal)

II. Pre-Installation

NOTE: The Following Installation steps apply to the installation of the Front Bumper. PLEASE READ THE ENTIRE MANUAL BEFORE ATEMPTING INSTALLATION! Ignoring these steps will increase your probability of scratching the vehicle during product installation!

Optional: If installing winch and roller fairlead into bumper, do it at this time. Follow the winch manufacturer's instructions for installation. If you are installing a winch with a pulling capacity of 12,000 lbs., the front face mounting holes must be used.

If not installing a winch, a license plate may be installed onto the front face of the bumper.

III. Front Bumper Installation

- A. Mount bracket to truck frame. Three bolts pass through the front of the frame and are indicated by the red boxes. One bolt passes through the side of the frame (i.e. cross bolt) and is indicated by the blue circles. All bolts should be hand tight to allow for adjustment.**



Figure 6a

figure 6b

Installation Instructions Premium Front Sensor Bumper

Product Number: K3860, K3861, K3862,
R3860, R3861, R3862

Application: 2016 CHEVY 1500



Figure 7

- B. Mount bracket to bumper. With the help of at least two others, and possibly a floor jack, to support the center of the bumper, lift the Fab Fours bumper into place. **Do Not Fully Tighten, Hand Tighten Only!**
- C. Align the bumper side to side and top to bottom to ensure a perfect fit to the truck. Allow 0.375" of clearance to all painted surfaces if possible. This is to allow for frame flex!
- D. Fully tighten all fasteners between bumper and brackets as well as brackets and frame.

Note: Do Not Over Tighten "Cross Bolt". Frame Should Not Compress!

- E. Enjoy your New Replacement Bumper from Fab Fours!

F. *Maintenance/Care*

- Periodically check and tighten all fasteners.
- Stripped, fractured, or bent bolts or nuts need to be replaced.
- After washing of the vehicle make sure to fully dry all surfaces



More than expected... Better than expected