



INSTALLATION MANUAL
VENGEANCE FRONT BUMPER
PRODUCT NUMBER: V495X
APPLICATION: 2020 CHEVROLET HD



IMPORTANT SAFETY GUIDE | Your safety and the safety of others is very important.

In order to help you make informed decisions about safety, we have provided the following warnings, safety precautions, installation instructions, and other important information to alert you to potential hazards that could hurt you or others.

Please do a job safety analysis before each task to identify potential hazards for your situation and remove/protect against them. Use own good judgment and take your time.

Check packaged materials immediately upon arrival to ensure that all listed parts are included and undamaged.

Read and understand all warnings, safety precautions, and instructions before installing this product.

SENSORS FIELD OF VIEW MAY BE ALTERED WITH USE OF THE REPLACEMENT BUMPER.

WARNINGS

- Failure to observe the following warnings and instructions provided in this manual could lead to severe injury and/or death.
- For professional installation only. Careless installation and/or operation can result in serious injury, death, and/or equipment damage. All liability for installation and use rests with the user or consumer.
- Fab Fours, Inc. only approves installing this product according to these written instructions with the hardware provided. Failure to install according to these instructions will invalidate the warranty. This includes, but is not limited to, using alternative installation methods, hardware, or materials.
- This product is for off road use only.

SAFETY PRECAUTIONS

- Always remove jewelry and wear eye protection.
- Always use extreme caution when jacking up a vehicle for work. Set emergency brake and use tire blocks. Locate and use the vehicle manufacturers designated lifting points. Use jack stands.
- Always use appropriate and adequate care in lifting components into place.
- Always ensure components will remain secure during installation and operation.
- Always wear safety glasses when installing this kit. A drilling operation will cause flying metal chips. Flying chips can cause serious eye injury.
- Always use extreme caution when drilling a vehicle. Always disconnect power before welding. Thoroughly inspect the area to be drilled (on both sides of material when possible) prior to drilling, and relocate any objects that may be damaged.
- Always use extreme caution when welding a vehicle. Thoroughly inspect the area to be welded (on both sides of material when possible) prior to welding, and relocate any objects that may be a fire hazard. When welding in a cab, make sure the interior surfaces are covered (e.g., welding blanket) and a fire extinguisher is at hand.
- Always use extreme caution when cutting and trimming during fitting.
- Always tighten all nuts and bolts securely per installation instructions.
- Always route electrical cables carefully. Avoid moving parts, components that become hot, and rough or sharp edges.
- Always insulate and protect all exposed wiring and electrical terminals.
- Perform regular inspections and maintenance on mounts and hardware.

TABLE OF CONTENTS

- 2 SAFETY / DISCLAIMER
- 3 TABLE OF CONTENTS
- 4 A MESSAGE FROM THE OWNER
- 5 GETTING STARTED
- 6 PROVIDED MATERIAL
- 7 DISASSEMBLY
- 12 INSTALLATION

A MESSAGE FROM THE OWNER



Fab Fours' was born out of a passion for customizing vehicles and a love of the outdoors. Our engineering team uses the latest 3D design software to turn new product ideas into reality. In our factory, designs come to life with the combination of cutting edge technology for metal cutting and forming and an American workforce that puts its' heart and pride into every product.

From design and manufacturing, to quality and delivery, Fab Fours' mission is to be the market leader for steel truck and jeep accessories. We make sure a quality product is delivered on time, more than expected, better than expected to our customers.

Enjoy your new Fab Fours product. Welcome to the family!

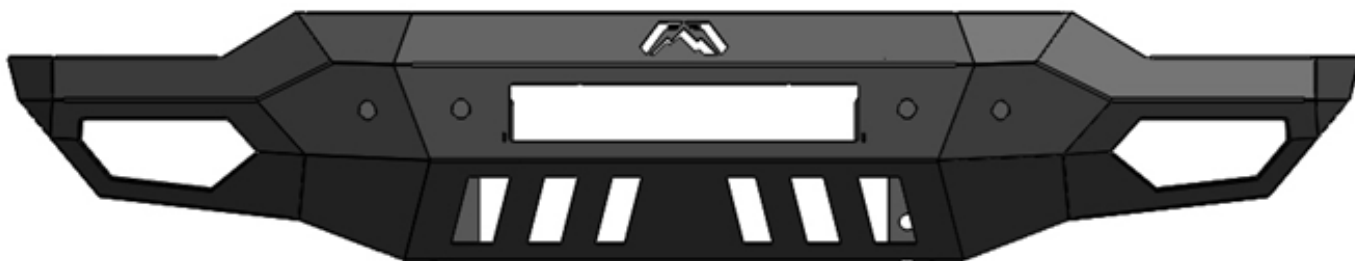
Ereg Higgs

FOUNDER, FAB FOURS

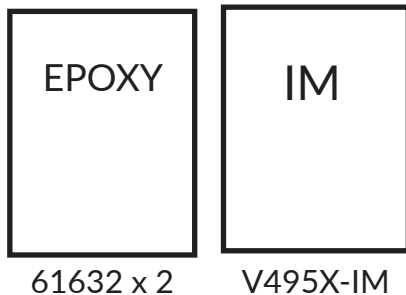
GETTING STARTED

Before you begin the installation process of your new Fab Fours product, we suggest laying out all materials and parts on a pad or protective surface.

Failure to fully account for all components before beginning installation may leave vehicle immobile until part is acquired. Refer to the next pages as an inventory check.



PROVIDED MATERIALS



22068

TOOLS REQUIRED

- 7mm Socket Wrench
- 13mm socket wrench
- 15mm socket wrench
- 18mm socket wrench
- T10 Star Head wrench
- Pliers
- Body Pry Tool

ASSISTANCE

We recommend two people perform the installation as items are heavy and may need to be held in place while installing.

ORGANIZATION

Disassemble the vehicle where you can catalog and store everything. We suggest labeling and bagging all the OEM bolts when removing from the vehicle. Failure to keep track of parts could lead to an inability to properly reinstall components.

DISASSEMBLY

NOTE: Sensors are extremely delicate and must be handled with care! Do not push on face of sensors to remove! Retain all OEM removed parts until installation is complete.

1. Use a T10 star head socket wrench to remove the two (2) bolts from both the passenger and driver side wheel wells. Figure 1.

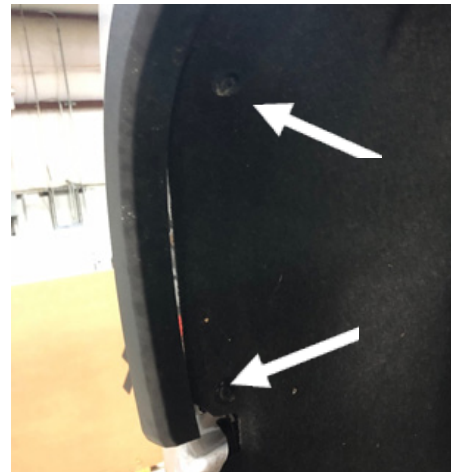


Figure 1

2. Use a body pry tool to carefully remove the front of the fender flare away from the body. Use a 7mm socket wrench to remove the bolt on the valance. Figure 2.



Figure 2

3. With the 7mm bolt removed use a body pry tool to remove the valance from the truck. Figure 3.



Figure 3

4. Use a 10mm socket wrench to remove the two (2) bolts at the base of the grill. Figure 4.



Figure 4

5. Use a body pry tool to remove the nine (9) push pins holding the grill cover. Figure 5.

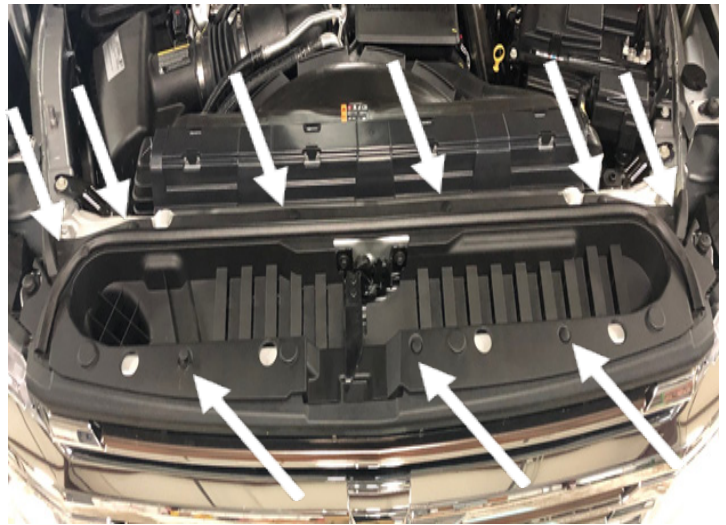


Figure 5

6. Use a T10 socket wrench to remove the two bolts holding the hood latch on. With the hood latch taken off you can remove the grill cover. Figure 6.



Figure 6

7. Use a 10mm socket wrench to remove the four (4) bolts on the top of the grill. Figure 7.



Figure 7

8. With the bolts removed, carefully take the grill off the truck. While taking off the grill, unplug the camera harness on the passenger side of the truck. Figure 8.



Figure 8

9. From under the truck: use a 15mm socket wrench to remove the two (2) back bolts on the bumper support bracket on both sides. Figure 9.

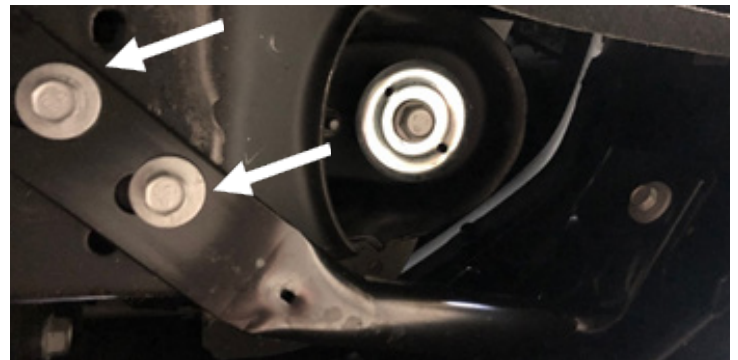


Figure 9

10. With the grill gone you can access the bumper mounting bolts on the top deck. Use a 15mm socket wrench to remove the two (2) bolts one of the top (Figure 9) and one on the bottom (Figure 10). The bumper can now be removed from the truck. Figure 10-11.

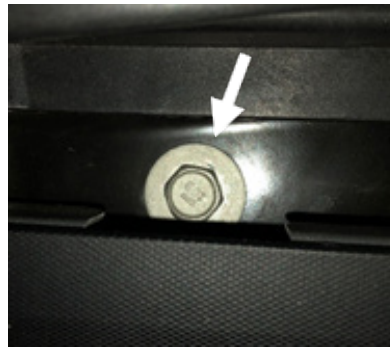


Figure 10

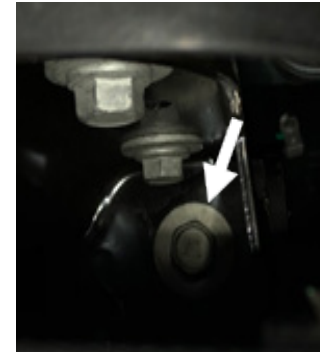


Figure 11

11. As you remove the bumper, unplug the sensor, heater plug, and lower louver harnesses located on the driver side of the truck. Figure 12.

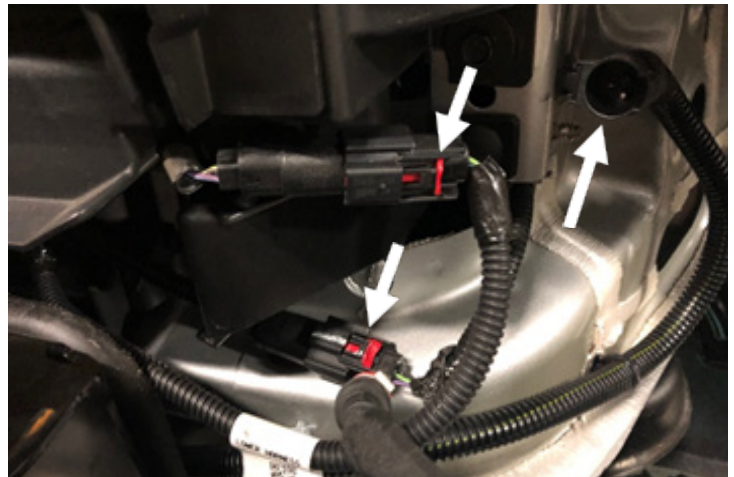


Figure 12

12. If equipped, remove the factory tow hooks by using an 18mm socket wrench to unfasten the two (2) bolts in the frame. Figure 13.

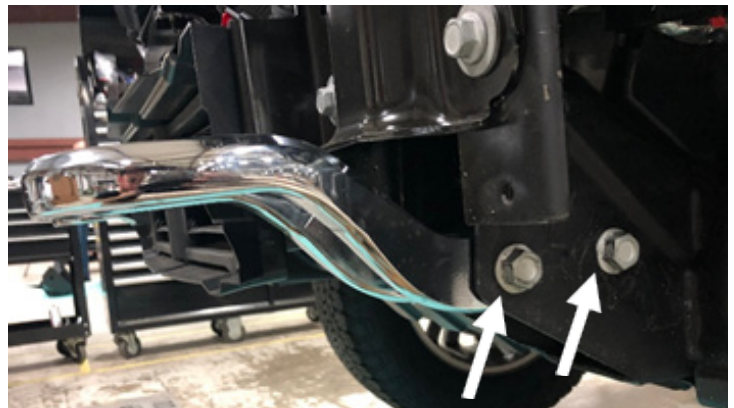


Figure 13

13. Use a 15mm socket wrench to take four (4) bolts holding the mounting plates and lower louvers to the frame horns. Figure 14.

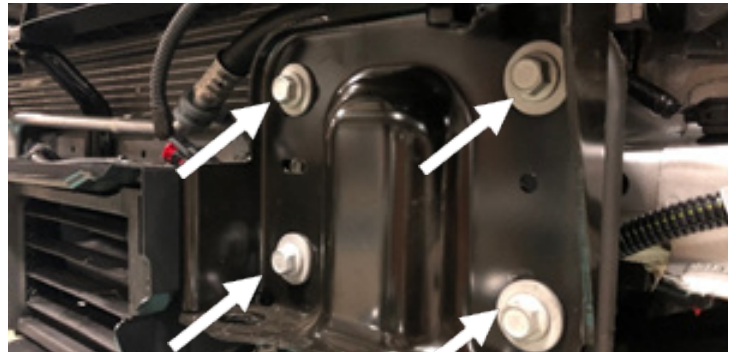


Figure 14

14. Disconnect the lower louvers from the mounting plates by using a 7mm socket wrench to remove the six (6) bolts. Set bolts aside for later use. Figure 15.



Figure 15

15. Use a pair of pliers to remove the two (2) clip nuts from both mounting plates to use in the bumper install. Figure 16.

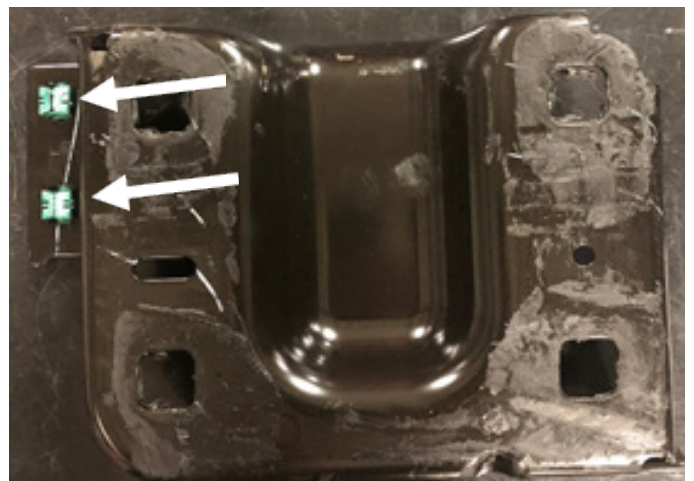


Figure 16

INSTALLATION

16. With the louvers removed, use a cutting tool to remove the plugs on both sides. Figure 17.

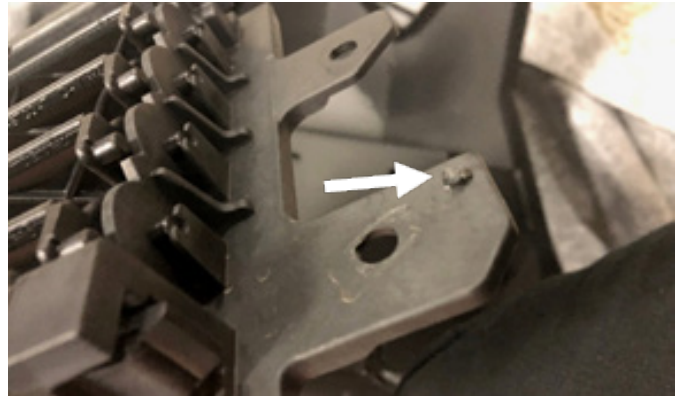


Figure 17

17. If equipped, remove the engine heater plug located on the driver side of the truck bumper. Push the bumper in against the spring and turn counterclockwise, once unclipped pull out from the bumper. Figure 18.



Figure 18

18. Carefully remove the four sensors and sensor housings from the bumper by spreading the housing clips out and pushing the sensor out simultaneously. Make sure to mark the position of each housing for installing into the Fab Fours bumper. Figure 19.



Figure 19

19. Remove the sensor housings from the bumper by pressing the retainer clips in on the sides and pushing the housing out. Figure-20.

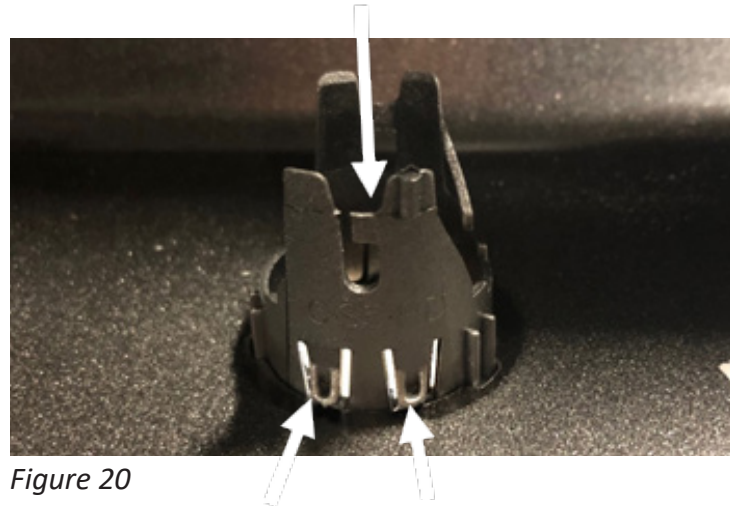


Figure 20

20. Install the lower louvers onto the Fab fours bumper using the OEM bolts and clip nuts removed during steps 14-15 with a 7mm socket wrench. Figure 21.



Figure 21

21. Install the sensor housings into their respective locations and install the sensors by running the harness behind the frame mounts and over the 20" light bar housing. Apply the provided epoxy (61632) around the housings to keep them in place. Figure 22.



Figure 22

22. Reinstall the heater plug on the driver side mounting plate by reversing the steps used to take it off. Figure 23.

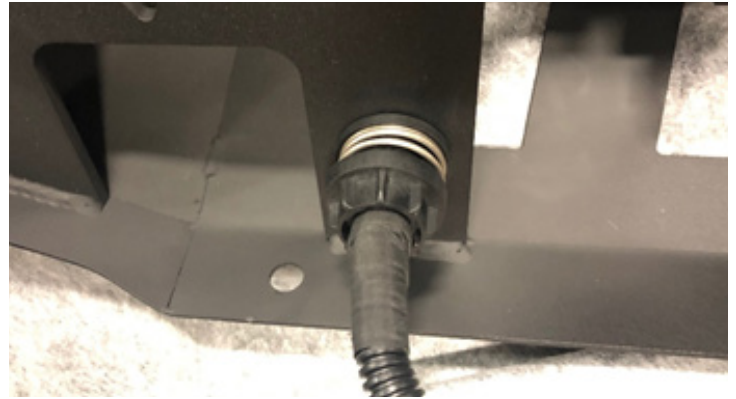


Figure 23

23. With assistance, hold the Fab Fours bumper up to the frame horns and attach it using the eight (8) OEM bolts from step 13 and a 15mm socket wrench. Figure 24.

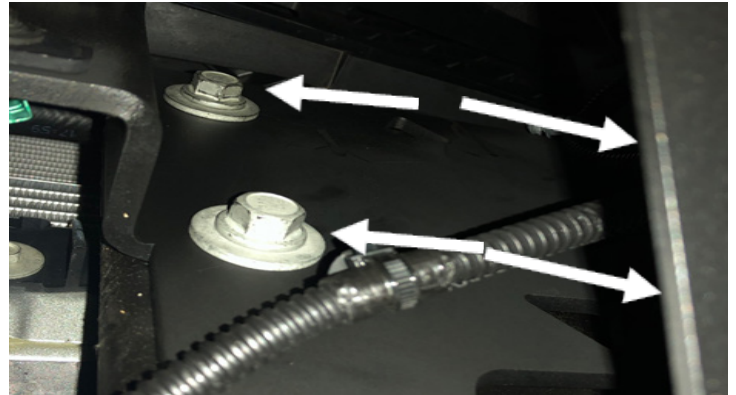


Figure 24

24. Plug in all harnesses and reinstall the valiance, grill and grill cover by reversing steps 8-1.

