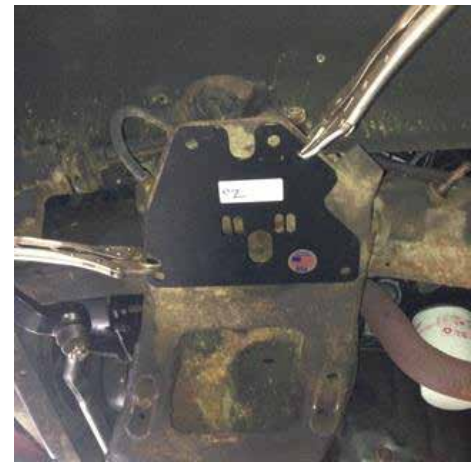




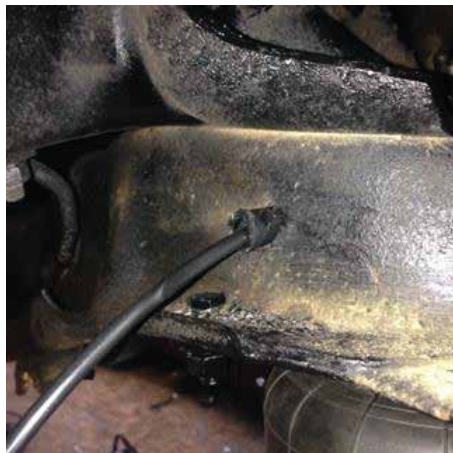
63-72 C10s have to be the coolest and easiest of them all to install air ride. It is the only GM vehicle where the shock is mounted on the outside of the coil spring, therefore no relocating.



Safely remove your factory coil spring.



Once the coil spring has been removed use the front upper mounting plate as a template for drilling the 4 parameter holes on the upper crossmember.



Be sure to feed enough air line through your spring pocket to easily feed into the air bag as you bolt it up



Mount the upper mounting plate and the lower cup to the air bag as shown above, and thread in the air fitting.



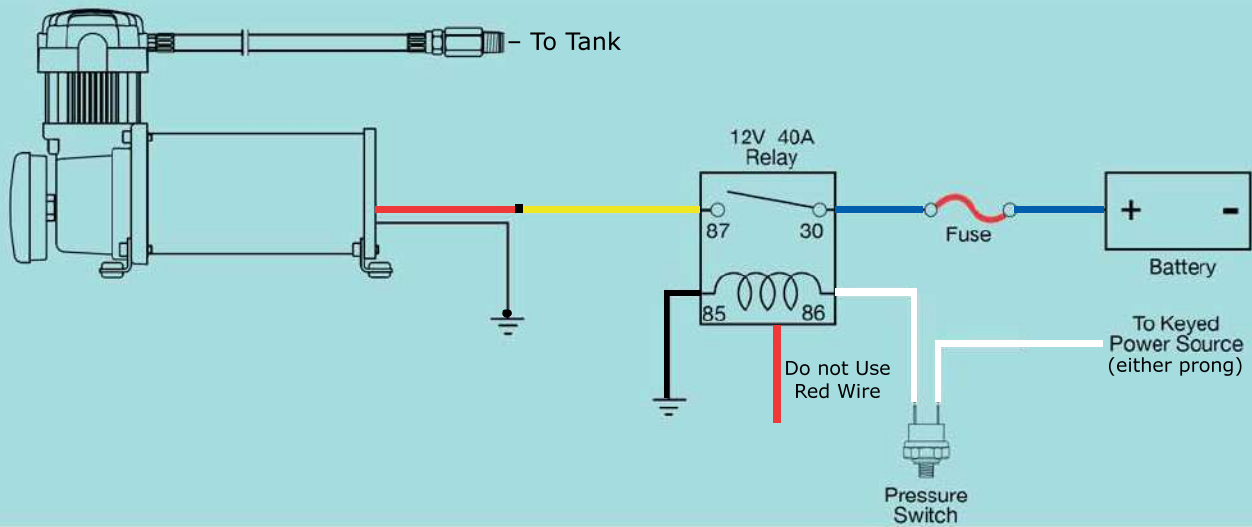
Plumb the air line into the bag fitting before bolting the assembled bag/bracket to the crossmember.



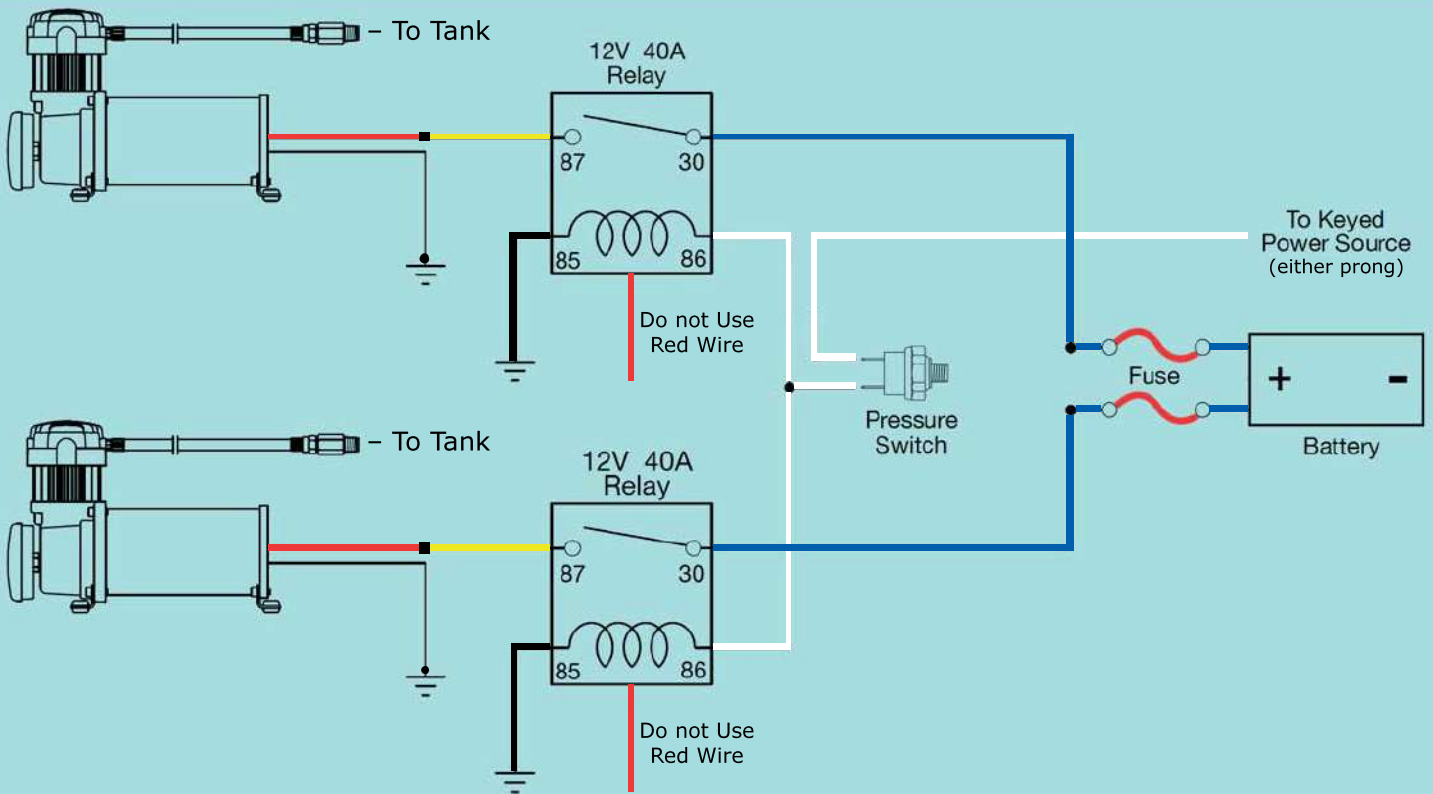
Once the mounting plate has been safely bolted in place the lower cup will sit in the factory lower A Arm.

This kit has been designed to give you optimal drop. Don't let other companies strong arm you into spending thousands on custom control arms and fancy chrome plated shocks.

EZ Air Ride Single 444C Wiring Diagram



EZ Air Ride Dual 444C Wiring Diagram



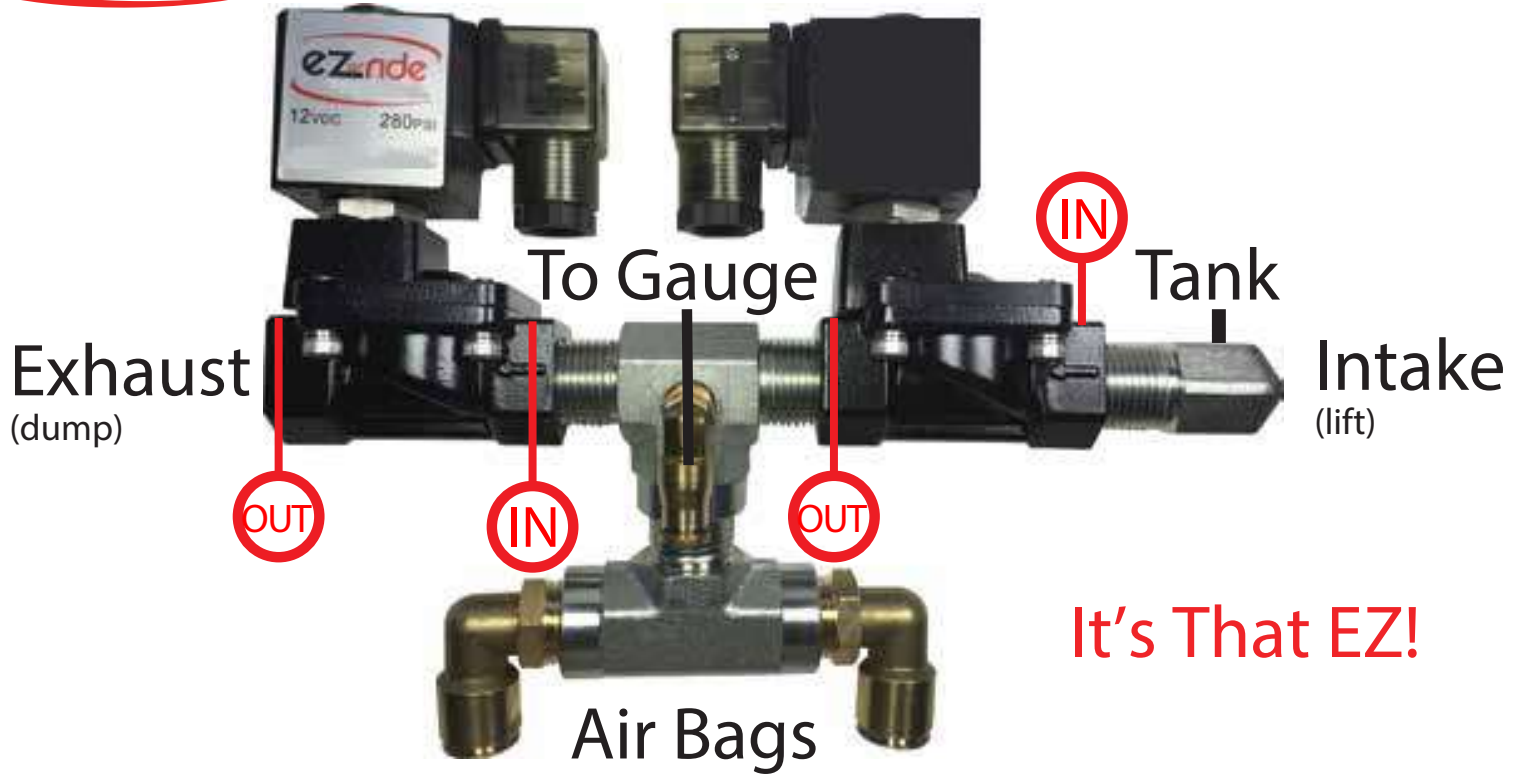
Ground Wire– The ground lead on the compressor should not be extended (if possible). Always connect ground leads directly to the chassis (frame) of the vehicle. Any other grounding method may result in amp spikes that can damage the compressor motor by causing sporadic and undesired operation.

Wire Type– Fine-stranded, copper wire is the item-of-choice. We only use Oxygen-free wire (more strands in the wire result in a better, more flexible cable). The insulation should be approved for automotive applications. This means that the wire is relatively immune to the adverse effects of petroleum products (gas, diesel, oil, brake fluid, radiator coolant, etc.).

Relays– Relays help to increase the life expectancy of pressure switches in the system.



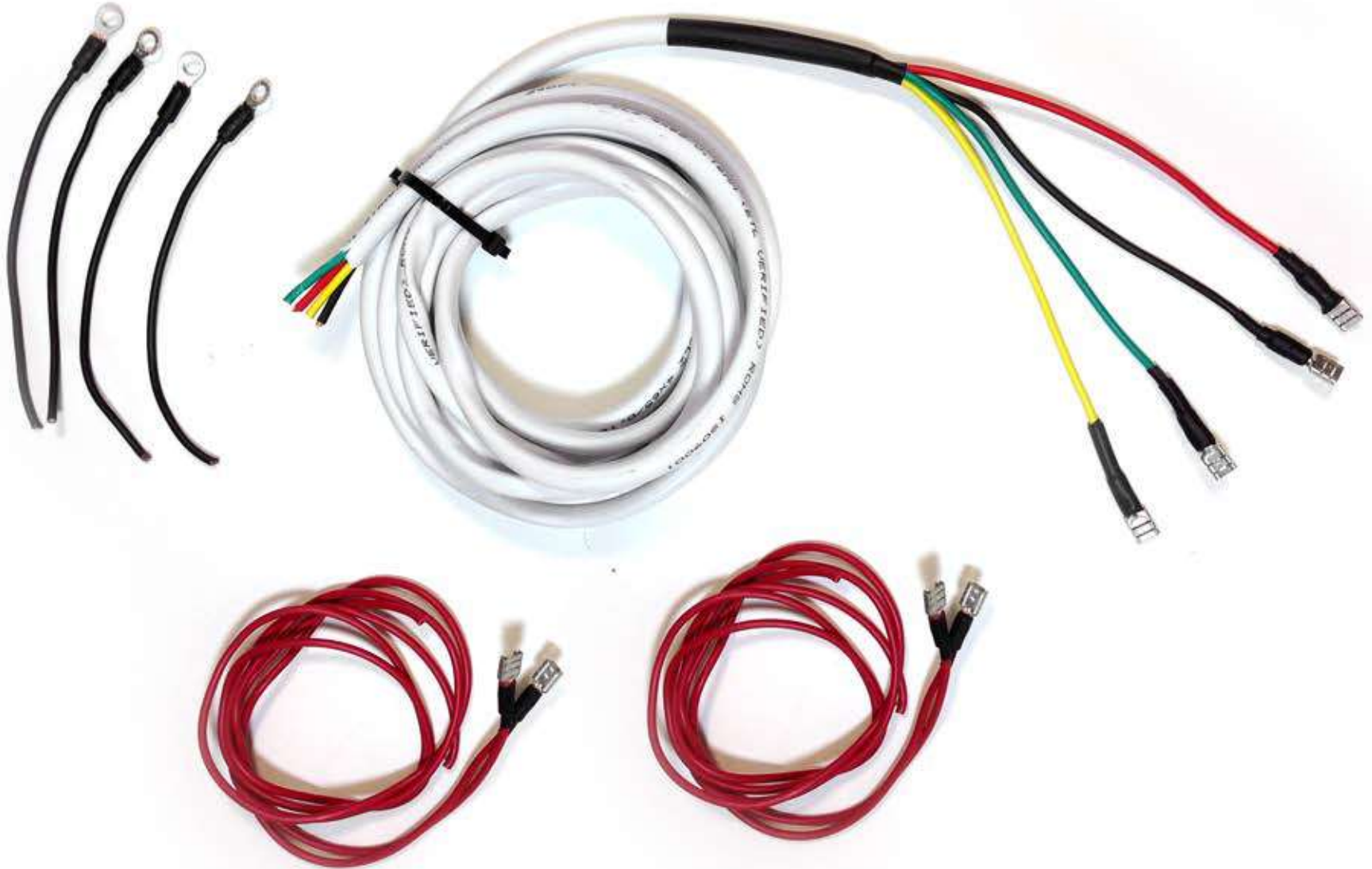
Deluxe/Platinum Valve Assembly and Plumbing



It's That EZ!

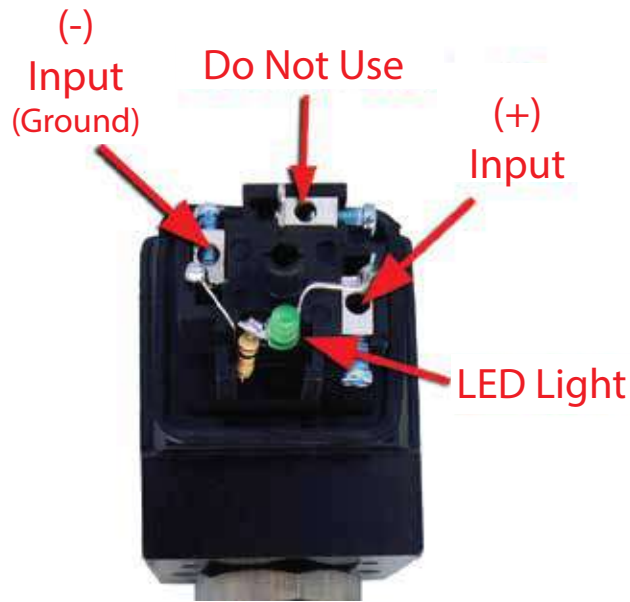
EZ Air Ride 12' Deluxe Valve Wire Kit

- Connects your valves to your EZ Air Gauge Panel
- Grounds your valves.
- Powers up your EZ Air Ride switches
- Lights up your EZ Air LED light.



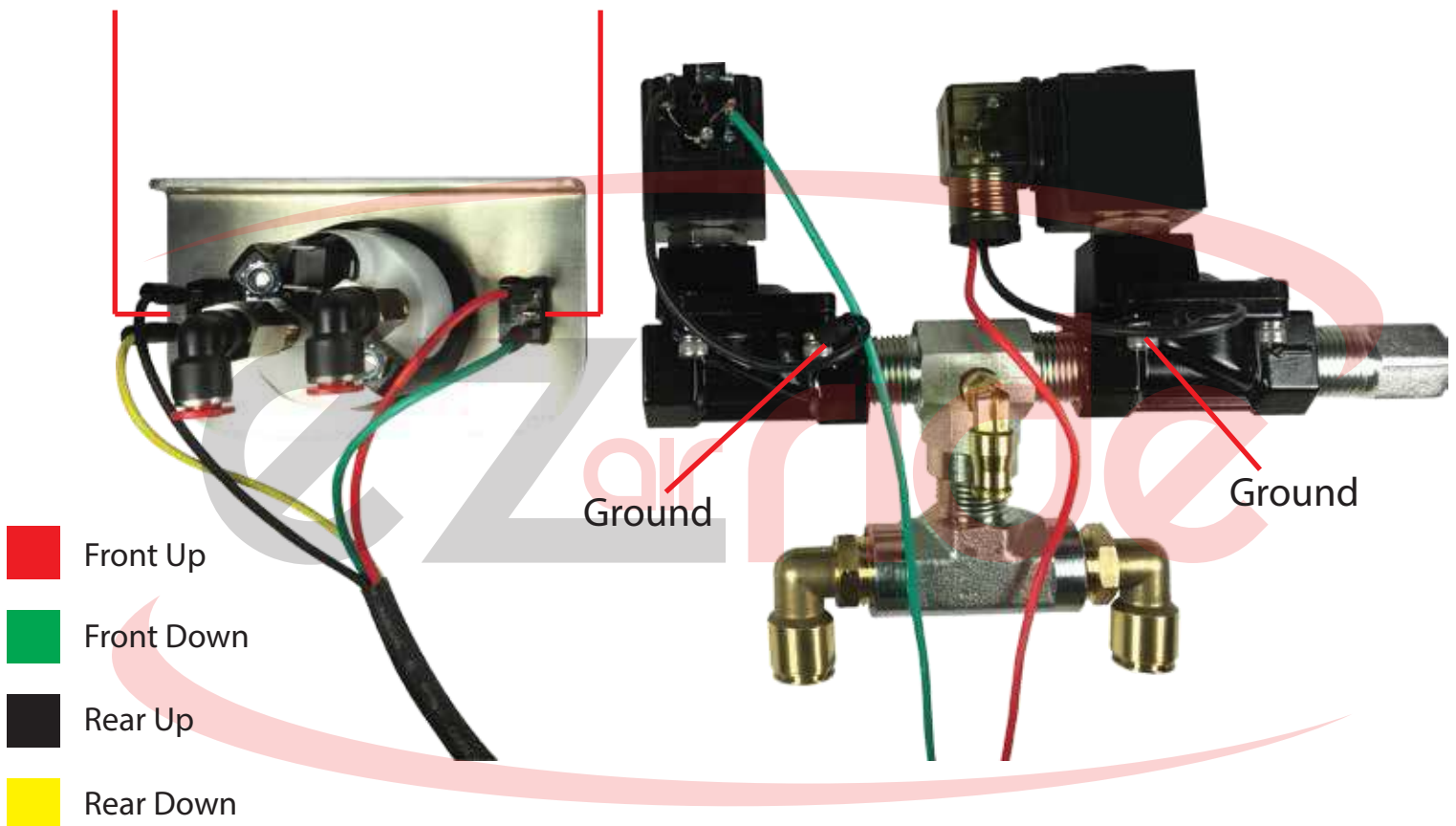


Deluxe Gauge Panel Setup



To Fuse Panel

To Fuse Panel



Trunk Upper Decks: Fits nicely on the upper deck in most trunks (under package tray).



Frame Rails: Fits in between the frame rails of 60-87 C10s, behind the rear axle.



Trunk: Sits comfortably in the trunk or compartment in most cars.





The Drain Cock will thread into the bottom tank port. This is used to drain any moisture.



Thread the Tee into the side of the air tank.



Next, thread the pressure switch into the tee. We suggest the backside Leaving the front for you Spare Air™.



On the opposite side of the tank connect your compressor.



Thread the last 1/4" reducer to the Viar 444c Chrome Compressor.



Now, plug your compressor into the side port on the air tank. Simply, through our EZ Tank Bracket hole.



Congratulations!

Your new 7 gallon air tank and valves are now setup and ready for air line and plumbing.



Your new EZ Air Ride™ suspension kit comes with our complimentary Spare Air™ system.
25' Coil Hose, Quick Connect, Brass Tee, Female Coupler, Schrader Valve, & Air Chuck



Connect the brass Tee to the side of the tank. Pressure switch (not shown) plugs into the back side and the quick connect plugs into the front.



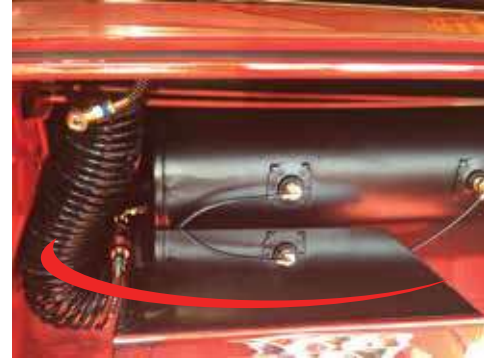
Insert the supplied schrader valve into the female coupler.



Simply, push the assembled schrader valve into the quick connect.



Now use your shop's compressor for your tank's first fill, leaving your Viair compressors to just maintain tank pressure. They will love you for this... if they had a heart ;)



When finished replace the schrader valve with the supplied coil hose and air chuck. You now have onboard air!



MAINTAINING YOUR TANK?

Depending on your climate, how much you use you air ride system, and the overall humidity will determine how often you should drain your tank. Simply, use a frisbee and the complimentary shop towel to catch any water or debris. With that being said, you may want to start off by draining it once per month. Slowly open the drain cock, catch any moisture with your new shop towel, then tighten your drain cock.

Your new Spare Air™ kit will make filling your tank back up a breeze!

Feel the difference with EZ Air Ride.