



EXEDY Globalparts Corporation

BEWARE OF IMITATIONS

MISLEADING

Picture below depicts a common way these sellers will display an EXEDY box and even claim it's an "EXEDY clutch kit" when in fact only ONE piece of the kit is genuine EXEDY.

In short, they are **mis-matching** inferior items, preying upon those who trust the EXEDY name.



Genuine EXEDY cover

No-Name
Knock-off Disc
No EXEDY Logo





Genuine EXEDY Complete Kit



This is how a genuine complete kit appears when purchased from an Authorized EXEDY dealer. Note “Pro-Kit” Logo.

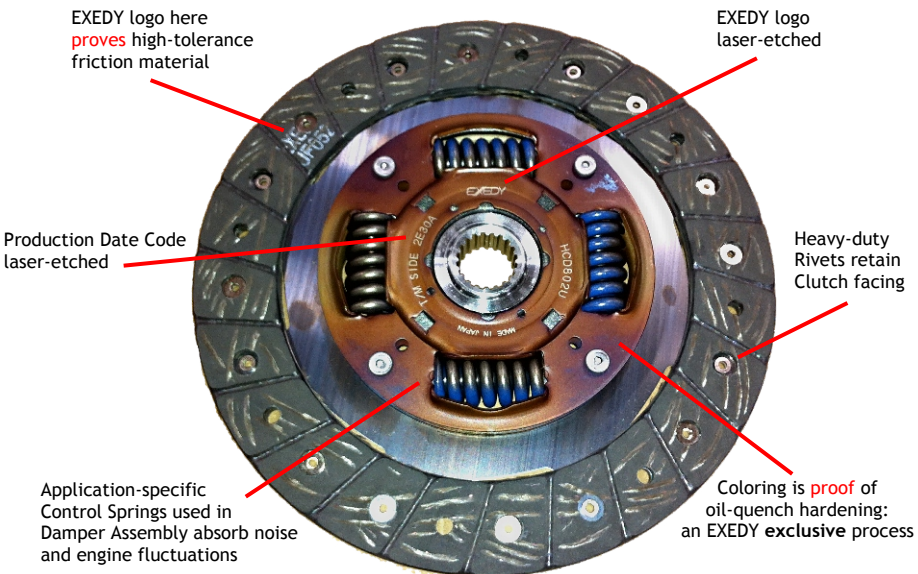
APPEARANCE COMPARISON

Disc Comparisons

KNOCK-OFF



EXEDY



APPEARANCE COMPARISON

Cover Comparisons

Difference in Performance.

Variation in Pressure Plate Lift:

Imitation does not meet the standard requirement (within 0.2mm maximum).
This might cause a mechanical judder.

Lever Height:

Neither of the inferior copies meet the standard requirements of the initial lever height.

Compared to EXEDY, the imitation are 2~3mm taller in height. This might cause a lever to malfunction at the initial release and also cause a poor engagement and disengagement.

Bearing Comparisons

Difference in measurement of Release Bearing.

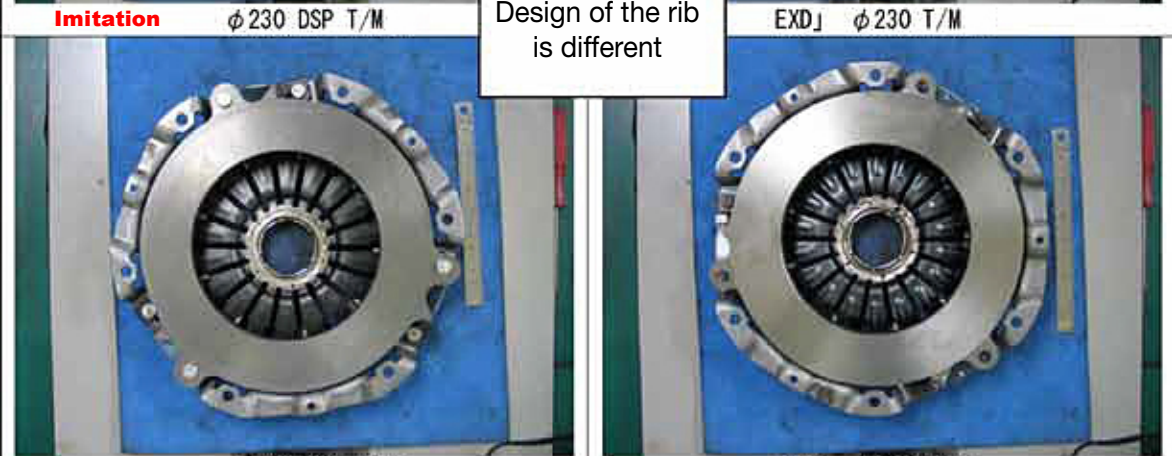
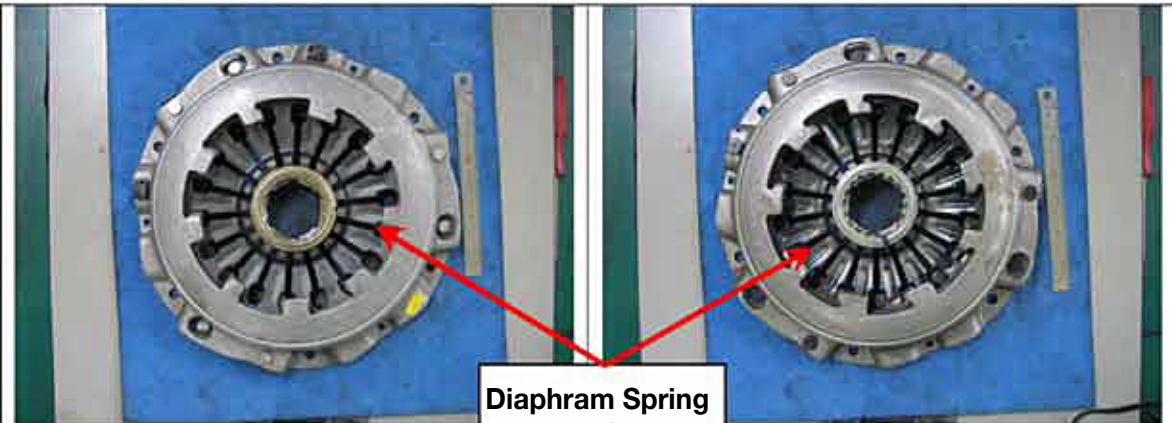
Height of the fork lever insert on the release bearing.

EXEDY release bearing has a required height of 13mm. The inferior copy is 1mm longer which will affect the preload and stroke (results in poor clutch engagement and disengagement). It might also interfere with the transmission housing.

APPEARANCE COMPARISON

Imitation

EXEDY



APPEARANCE COMPARISON

Imitation

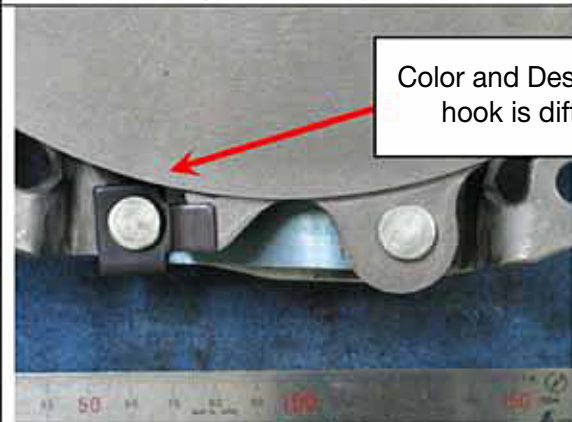
EXEDY



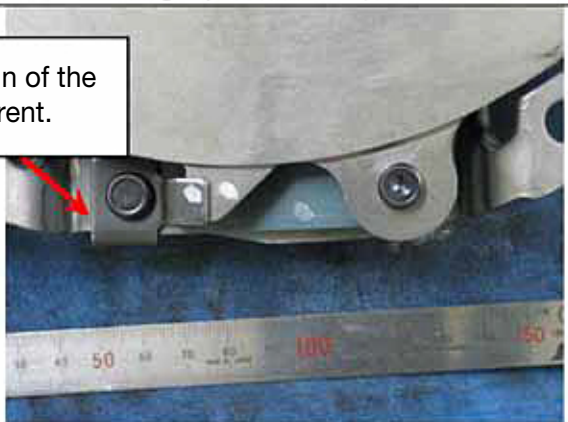
Imitation ϕ 230 STR T/M 3



EXD_J ϕ 230 STR T/M 3



Imitation ϕ 230 STR PP 1



EXD_J ϕ 230 STR PP 1



Imitation ϕ 230 STR PP 2



EXD_J ϕ 230 STR PP 2



Imitation ϕ 230 STR PP 3



EXD_J ϕ 230 STR PP 3

Color and Design of the hook is different.

APPEARANCE COMPARISON

Imitation

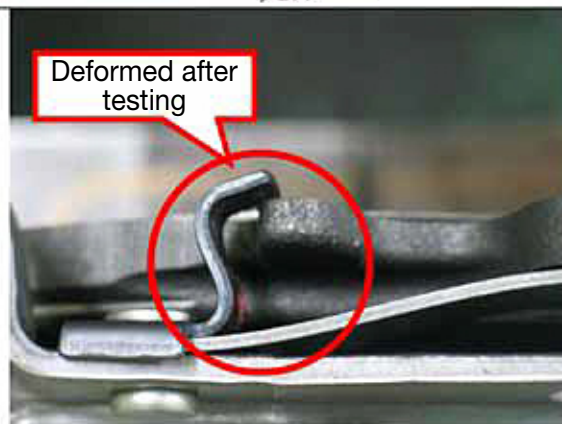
EXEDY



Imitation ϕ 230



EXD ϕ 230



ϕ 230 HOOK **after testing**

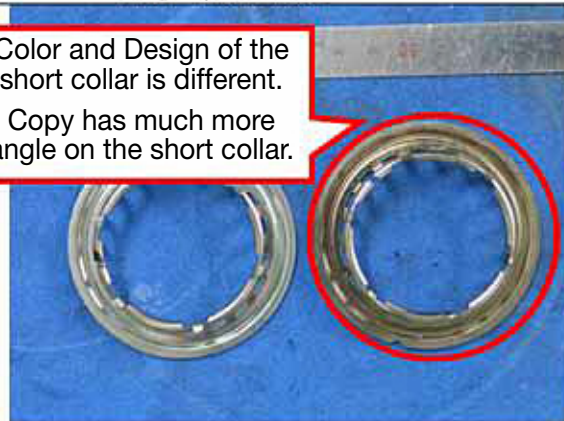


EXD ϕ 230 HOOK **after testing**



ϕ 230 W/C EXD **Imitation**

Color and Design of the short collar is different.
Copy has much more angle on the short collar.

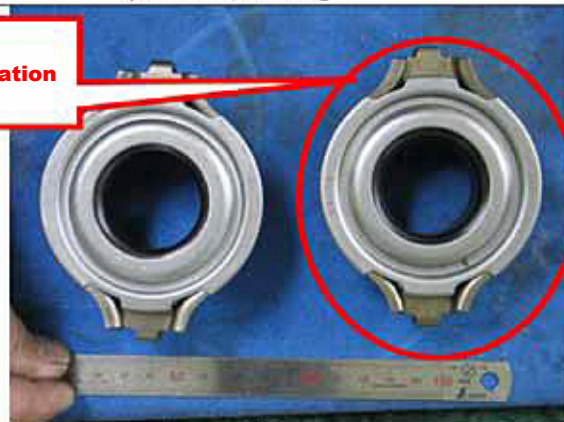


ϕ 230 W/C EXD **Imitation**



ϕ 230 W/C EXD **Imitation**

Imitation

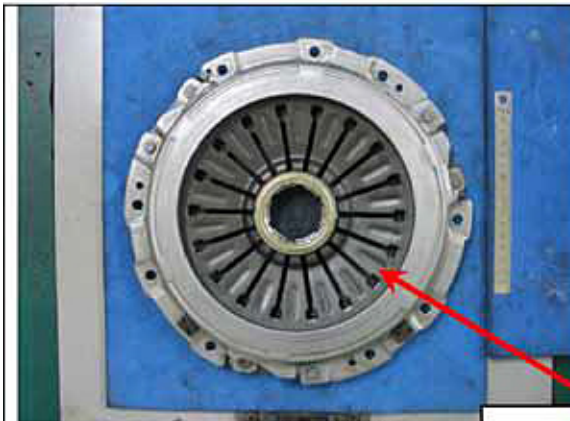


Brg EXD **Imitation**

APPEARANCE COMPARISON

Imitation

EXEDY



φ 240 T/M



EXD J φ 240 T/M

Diaphragm Spring design of the rib is different.



φ 240 PP



EXD J φ 240 PP



φ 240 HOOK 1



EXD J φ 240 HOOK 1



φ 240 HOOK 2

Due to its inferior design, the hook is very easy to break off.

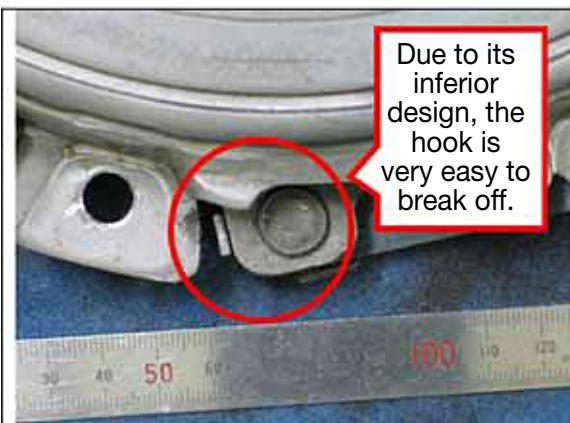


EXD J φ 240 HOOK 2

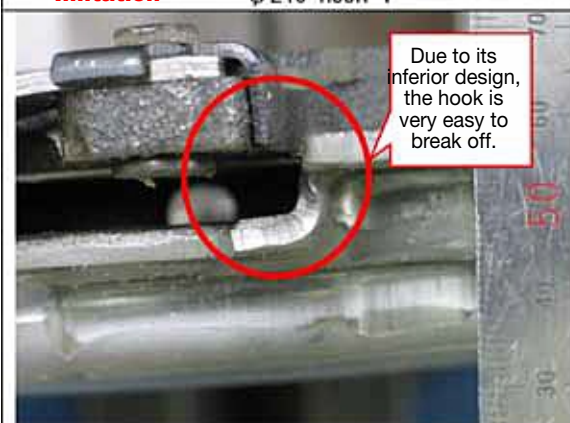
APPEARANCE COMPARISON

Imitation

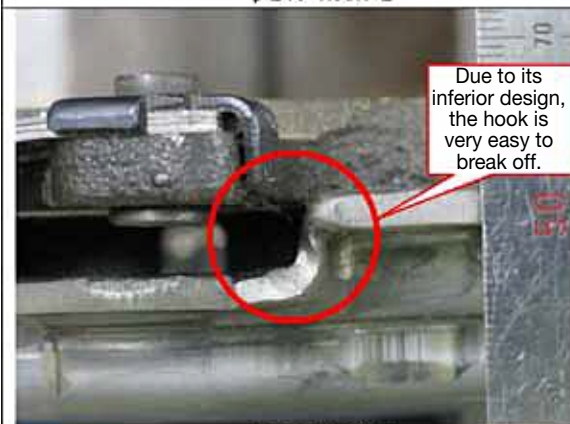
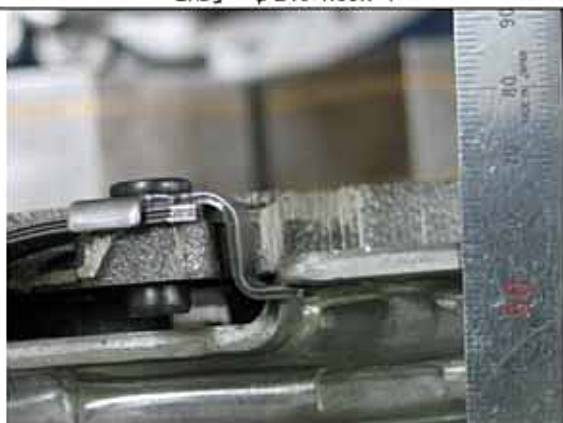
EXEDY



Imitation φ 240 HOOK 3



Imitation φ 240 HOOK 2



Imitation φ 240 HOOK 3



APPEARANCE COMPARISON

Imitation

EXEDY



$\phi 240$ **Imitation**



EXD J $\phi 240$



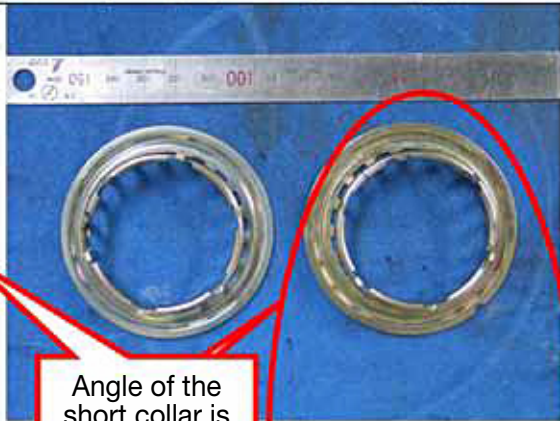
$\phi 240$ W/C EXD J **Imitation**



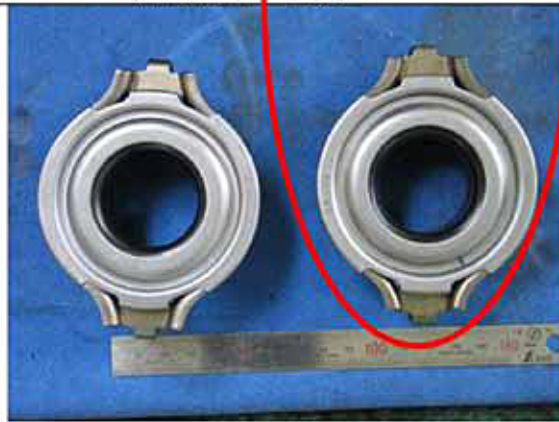
$\phi 240$ W/C EXD J **Imitation**



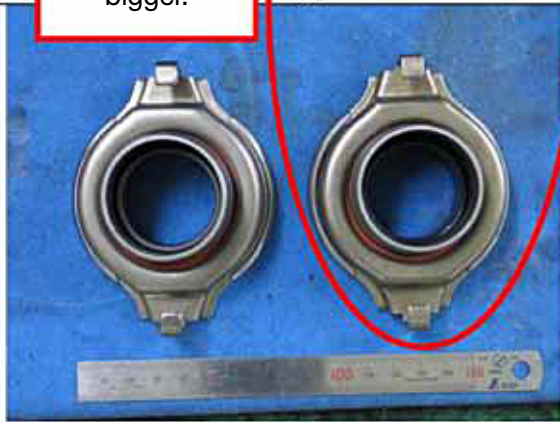
$\phi 240$ W/C EXD J **Imitation**



EXD J **Imitation**



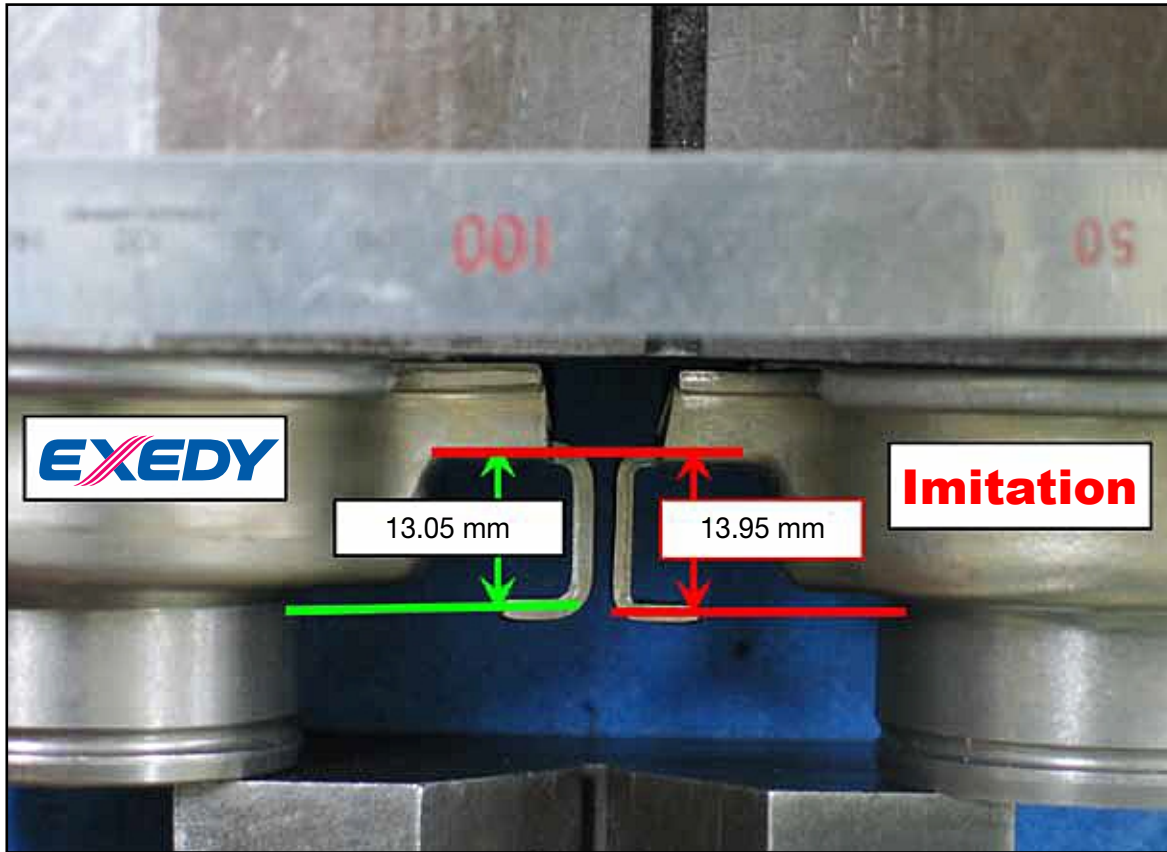
Brg EXD J T/M **Imitation**



Brg EXD J CC **Imitation**

Angle of the short collar is bigger.

APPEARANCE COMPARISON



Bearing side

Appearance difference between EXEDY and Imitation