



EXEDY Globalparts Corporation

BEWARE OF IMITATIONS

MISLEADING

Picture below depicts a common way these sellers will display an EXEDY box and even claim it's an "EXEDY clutch kit" when in fact only ONE piece of the kit is genuine EXEDY.

In short, they are **mis-matching** inferior items, preying upon those who trust the EXEDY name.



Genuine EXEDY cover

No-Name
Knock-off Disc
No EXEDY Logo





Genuine EXEDY Complete Kit



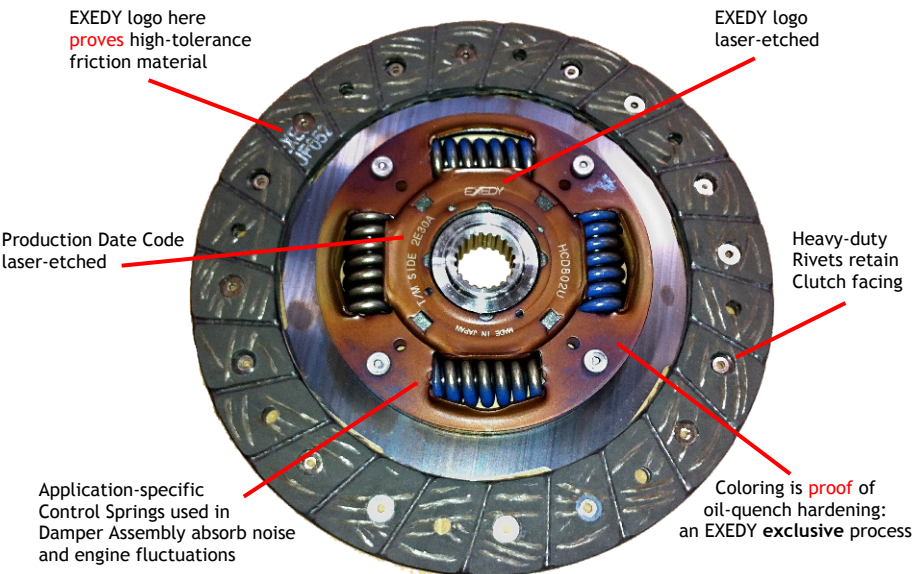
APPEARANCE COMPARISON

Disc Comparisons

KNOCK-OFF



EXEDY



APPEARANCE COMPARISON

Cover Comparisons

Difference in Performance.

Variation in Pressure Plate Lift:

Imitation does not meet the standard requirement (within 0.2mm maximum).
This might cause a mechanical judder.

Lever Height:

Neither of the inferior copies meet the standard requirements of the initial lever height.

Compared to EXEDY, the imitation are 2~3mm taller in height. This might cause a lever to malfunction at the initial release and also cause a poor engagement and disengagement.

Bearing Comparisons

Difference in measurement of Release Bearing.

Height of the fork lever insert on the release bearing.

EXEDY release bearing has a required height of 13mm. The inferior copy is 1mm longer which will affect the preload and stroke (results in poor clutch engagement and disengagement). It might also interfere with the transmission housing.

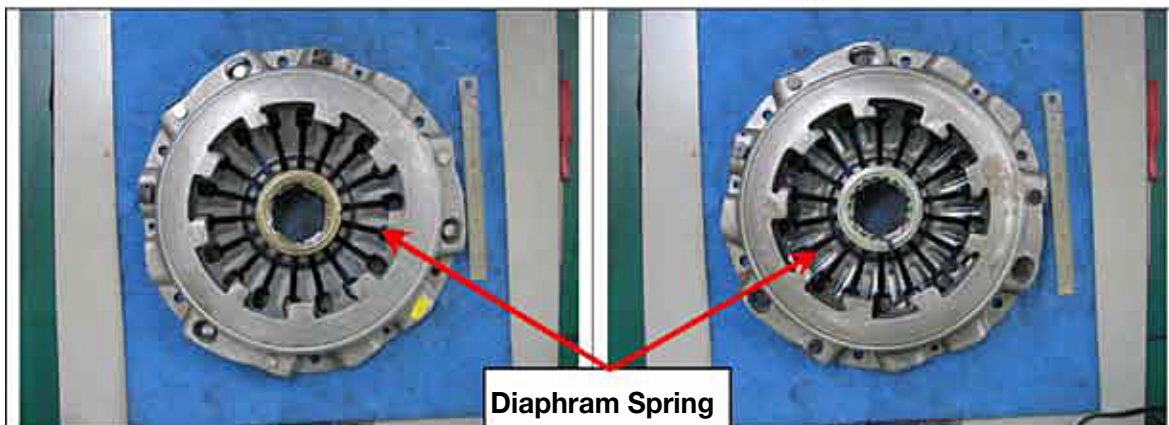


EXEDY Globalparts Corporation

APPEARANCE COMPARISON

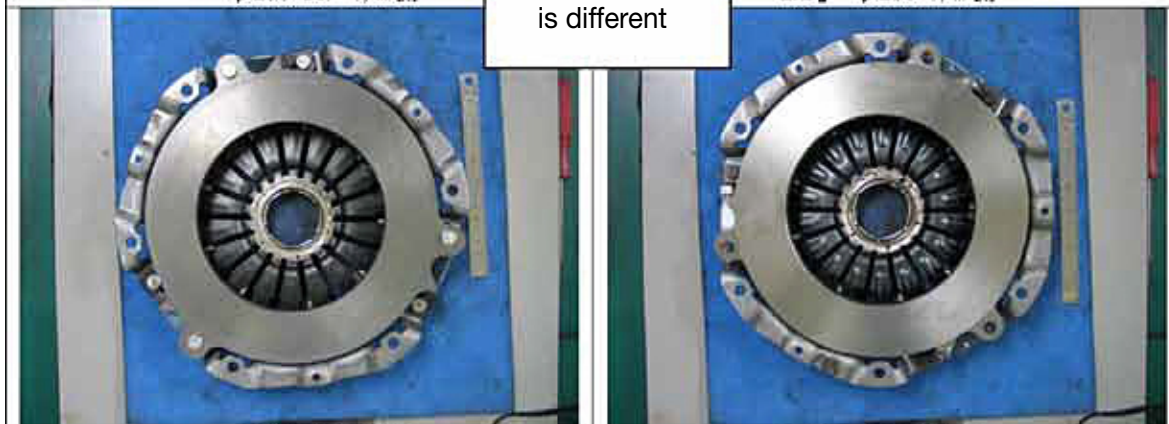
Imitation

EXEDY



Imitation φ 230 DSP T/M 側

EXD J φ 230 T/M 側



Imitation φ 230 DSP PP

EXD J φ 230 PP



Imitation φ 230 STR 部 T/M 1

EXD J φ 230 STR 部 T/M 1



Imitation φ 230 STR 部 T/M 2

EXD J φ 230 STR 部 T/M 2

APPEARANCE COMPARISON

Imitation

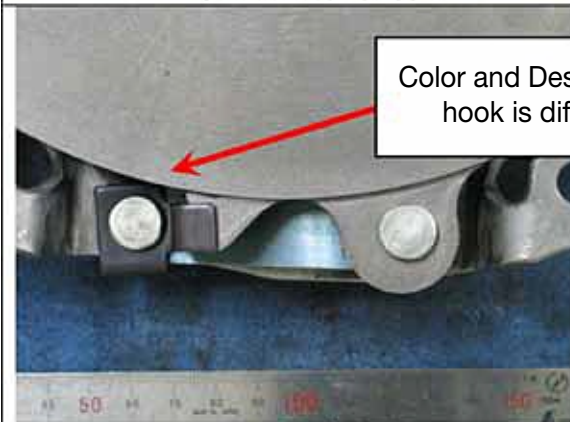
EXEDY



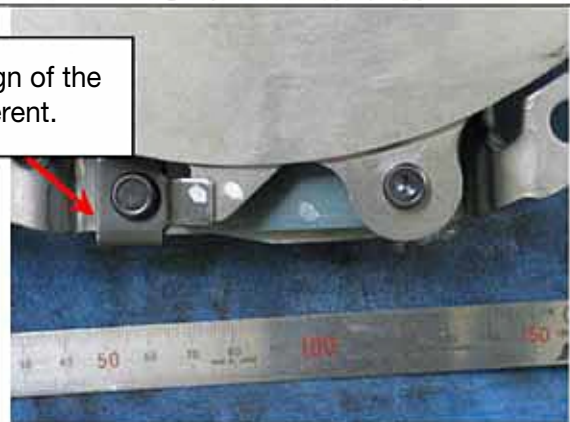
Imitation φ230 STR 部 T/M 側 3



EXD φ230 STR 部 T/M 側 3



Imitation φ230 STR 部 PP 側 1



EXD φ230 STR 部 PP 側 1



Imitation φ230 STR 部 PP 側 2



EXD φ230 STR 部 PP 側 2



Imitation φ230 STR 部 PP 側 3



EXD φ230 STR 部 PP 側 3

Color and Design of the hook is different.

APPEARANCE COMPARISON

Imitation

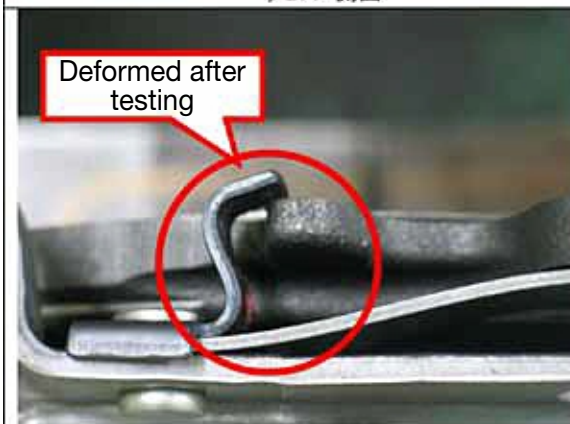
EXEDY



Imitation φ230 側面



EXD φ230 側面



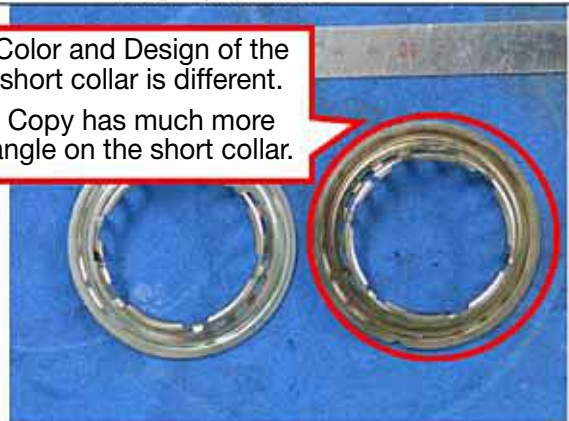
φ230 HOOK after testing



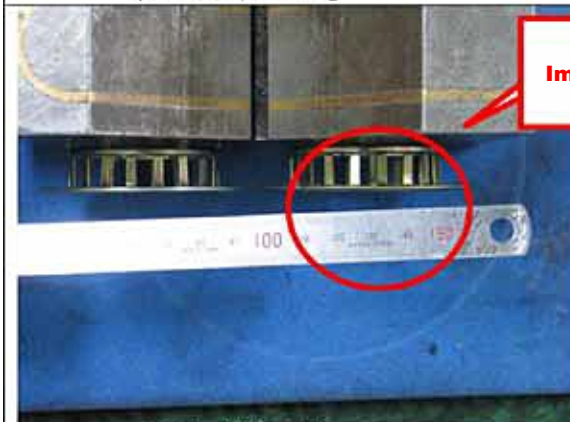
EXD φ230 HOOK after testing



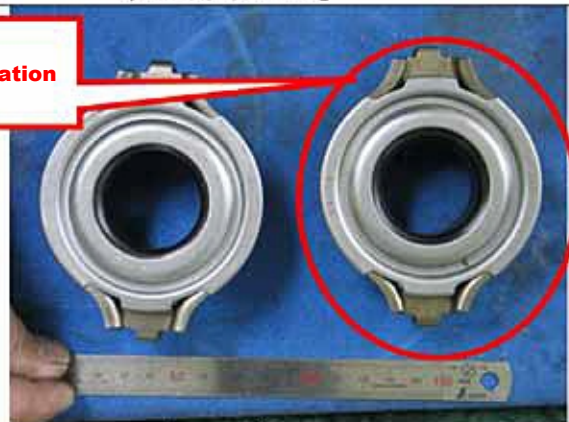
φ230 用 W/C EXD **Imitation**



φ230 用 W/C EXD **Imitation**



φ230 用 W/C EXD **Imitation**

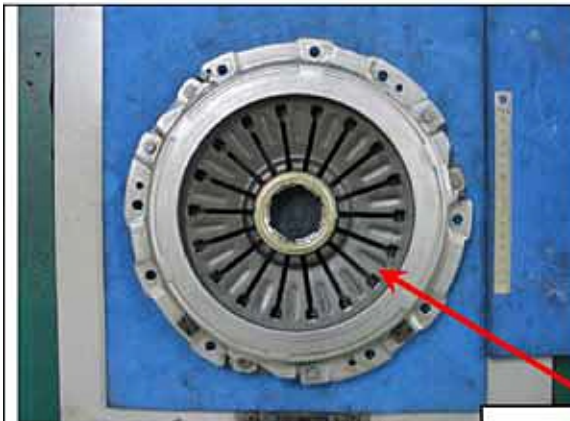


Brg EXD **Imitation**

APPEARANCE COMPARISON

Imitation

EXEDY



φ240 T/M 側



EXD J φ240 T/M 側

Diaphragm Spring
design of the rib
is different.



φ240 PP 側



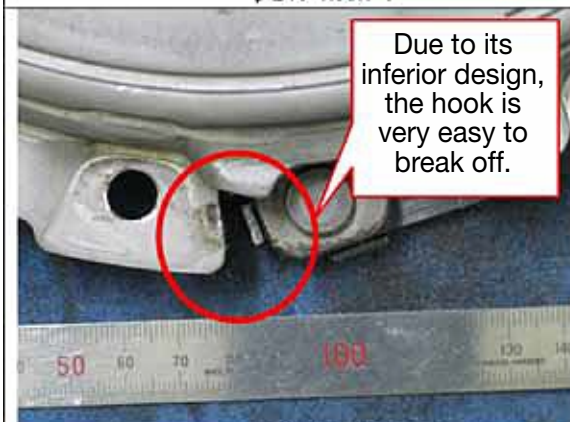
EXD J φ240 PP 側



φ240 HOOK 1



EXD J φ240 HOOK 1



φ240 HOOK 2

Due to its
inferior design,
the hook is
very easy to
break off.

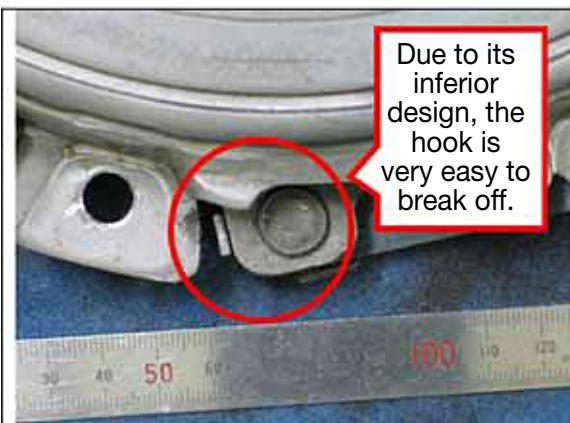


EXD J φ240 HOOK 2

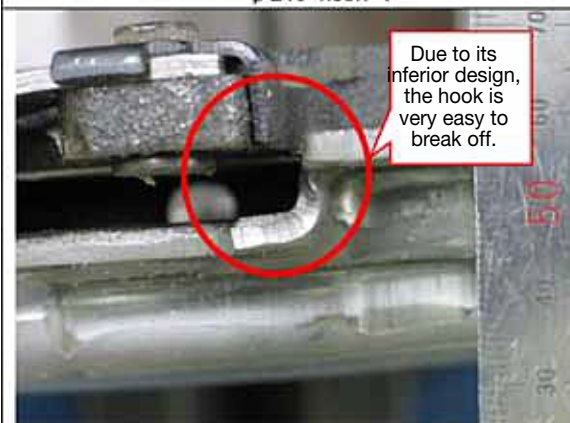
APPEARANCE COMPARISON

Imitation

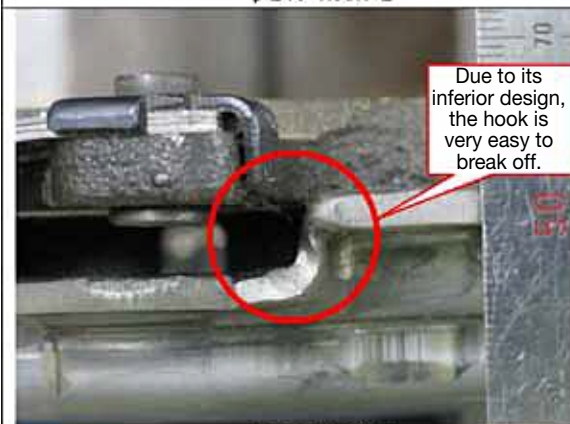
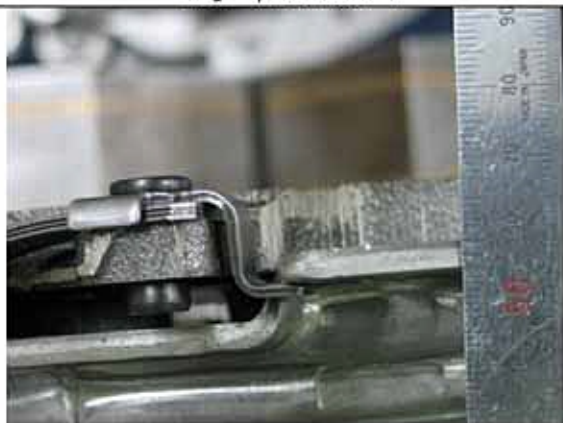
EXEDY



Imitation φ 240 HOOK 3



Imitation φ 240 HOOK 2



Imitation φ 240 HOOK 3



APPEARANCE COMPARISON

Imitation

EXEDY



φ 240 側面 **Imitation**



EXD J φ 240 側面

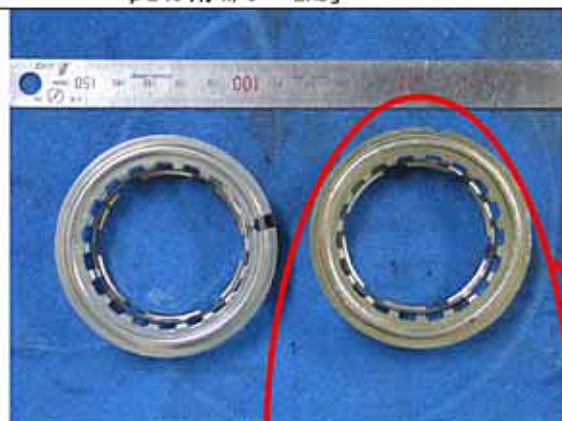


φ 240 用 W/C EXD J **Imitation**

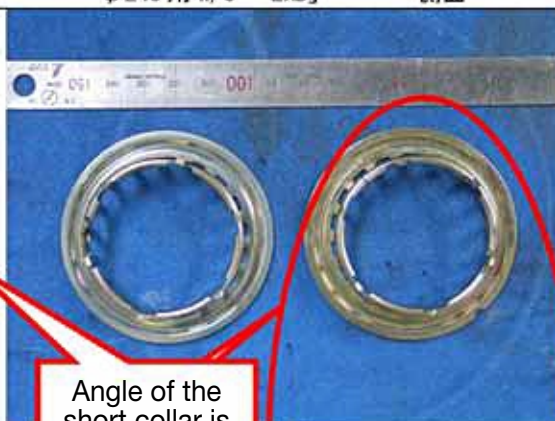


φ 240 用 W/C EXD J 側面 **Imitation**

Imitation has a wave spring.



φ 240 用 W/C EXD J **Imitation**

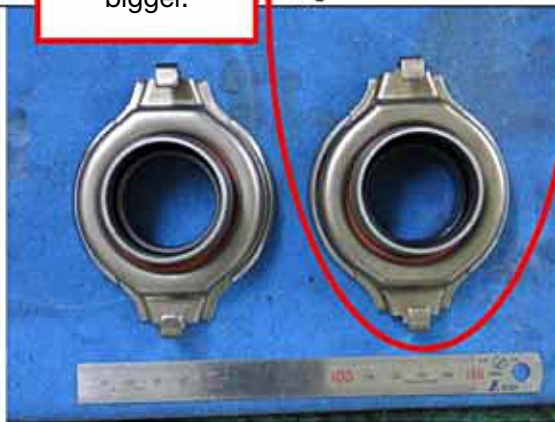


EXD J **Imitation**

Angle of the short collar is bigger.

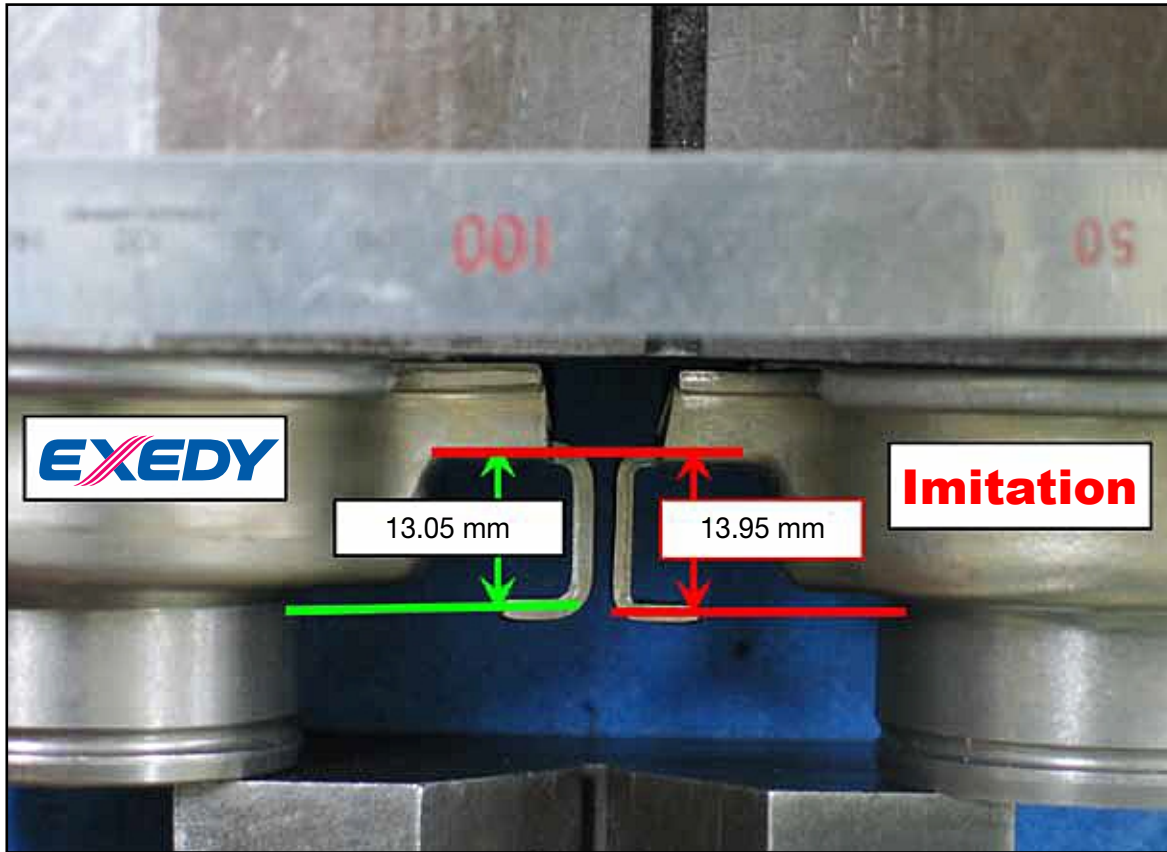


Brg EXD J T/M 側 **Imitation**



Brg EXD J CC 側 **Imitation**

APPEARANCE COMPARISON



Bearing side

Appearance difference between EXEDY and Imitation