

# Installation instructions

## 04 Scion XB

### Set # 8.3124

**Note:** It is recommended that this set be professionally installed if you are unfamiliar with this type of work, and a factory service manual be purchased prior to performing any work on your vehicle for proper disassembly, reassembly and torque specs. These instructions are intended for bushing removal and install of Energy Suspension polyurethane bushings, once you have removed the factory component from your vehicle.

### REMOVAL OF REAR AXLE CARRIER BUSHINGS:

Using a hammer and chisel, bend the 2 portions of the bushing rib until the claws of a puller set can be hung (Picture 1).

The I.D. of the axle beam is  $\varnothing 2.165''$ , use something with a O.D. of  $\varnothing 2.115''$  to push out the bushing. You can use the type of puller with a piece of tubing and puller adapter as shown (Picture 2)

Set up the puller as shown in Picture 3 along with the adapter plate and tubing. The stock bushing is not in very tight so it shouldn't take much effort to press it out. If you feel it is taking excessive effort, STOP. Try using a smaller diameter tubing and start again.

#### PICTURE 4

Bushing 3484 - Inside Position

Bushing 3485 - Outside Position

#### PARTS LIST:

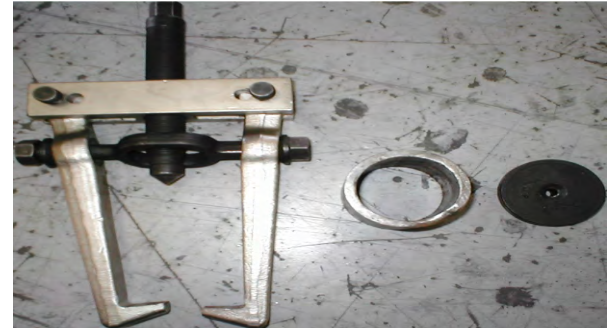
- 2 - 3484 - INSIDE POSITION
- 2 - 3485 - OUTSIDE POSITION
- 2 - 15.10.579.39 (.875" X .500" X 3.150") SLEEVE
- 2 - 9.11109 - GREASE

**GREASE ALL PARTS THAT COME INTO CONTACT WITH POLYURETHANE**

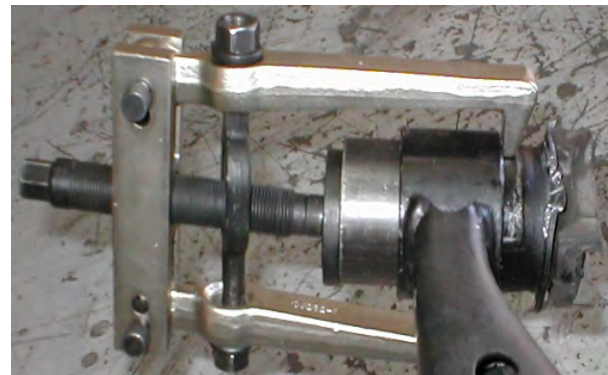
PICTURE 1



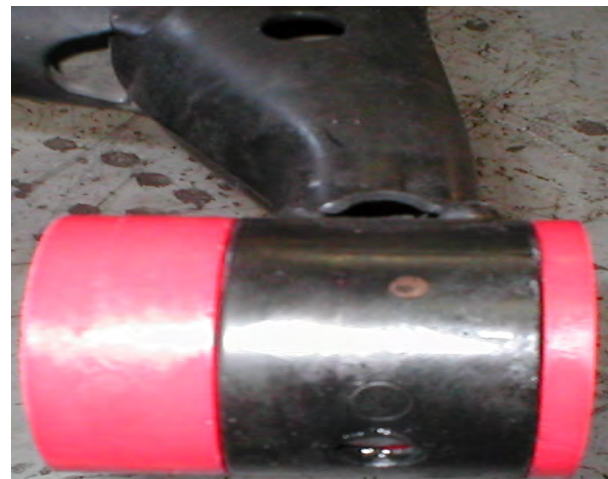
PICTURE 2



PICTURE 3



PICTURE 4



**17500**