

Installation instructions

Set 3.4157 (All positions supplied)

Set 3.4158 (Only position 1 supplied)

73-75 Firebird with 1" I.D Core Support

17496

Removal

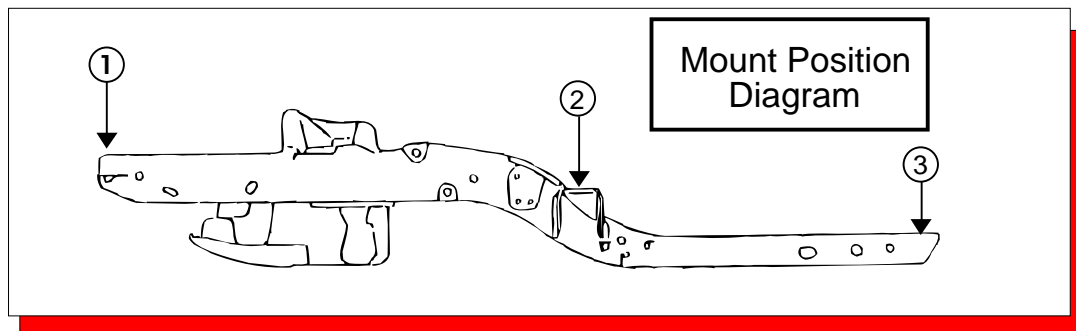
Spray all nuts to be removed generously with your favorite rust buster.

Note: When disassembling, note the quantity and positions of any shims that may have been inserted for body alignment. These shims will have to be reused to insure proper body alignment.

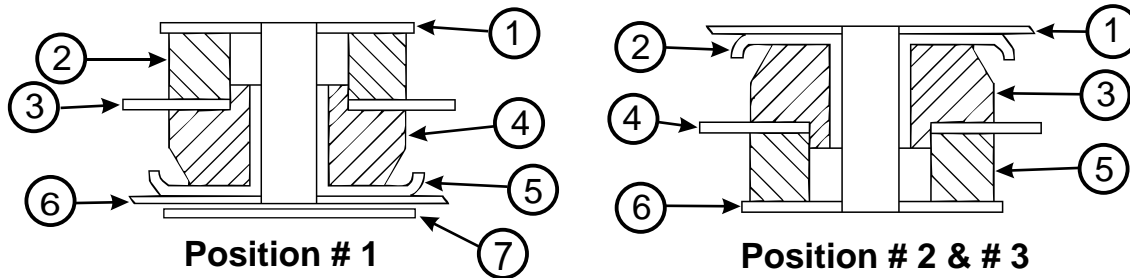
Remember: Only raise body high enough to remove & replace mounts. Always watch the fan shroud for sufficient clearance when raising the body. When jacking the body use a long enough 2X4 or 4X4 for maximum support. Never put jack directly on body panels.

Install mounts one side at a time with bolts on other side loosened only.

Retorque to factory specs.



Parts Diagram
(refer below)



NOTE: POSITION # 1 ON 74-75 FIREBIRDS MAY REQUIRE EXTRA SHIMS OR SPACERS AND ARE NOT INCLUDED IN THIS KIT.

POSITION # 1

1. Supplied washer (2.00"O.D. x .7/16" I.D.)
2. 4213
3. Core support Bracket
4. 4212
5. Supplied metal insert (1.340"O.A.L.)
6. Frame
7. Supplied washer (2.00"O.D. x .7/16" I.D.)
(used on 7/16" Bolt under frame)

NOT shown, but supplied for this position:
2 - 7/16"-14 x 3.00" bolts grd5
2 - 7/16"-14 locknuts.

POSITION # 2

1. Body
2. Supplied metal insert (1.495"O.A.L.)
3. 4005
4. Frame
5. 4004
6. Supplied washer (2-1/2"O.D. x 5/8" I.D.)

NOT shown, but supplied for this position:
2 - 5/8"-11 x 3" bolts grd5

POSITION # 3

1. Body
2. Supplied metal insert (1.410"O.A.L.)
3. 4003
4. Frame
5. 4004
6. Supplied washer (2-1/2"O.D. x 5/8" I.D.)

NOT shown, but supplied for this position:
2 - 5/8"-11 x 3" bolts grd5