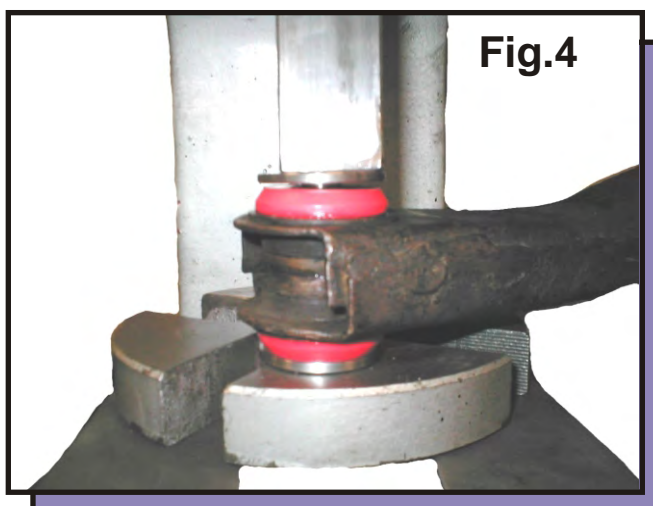
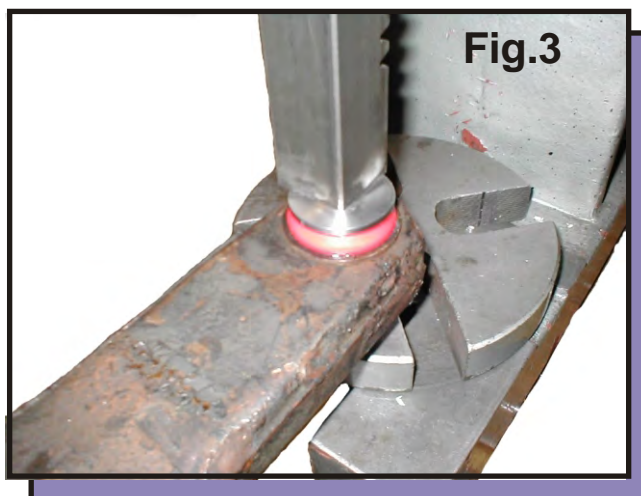
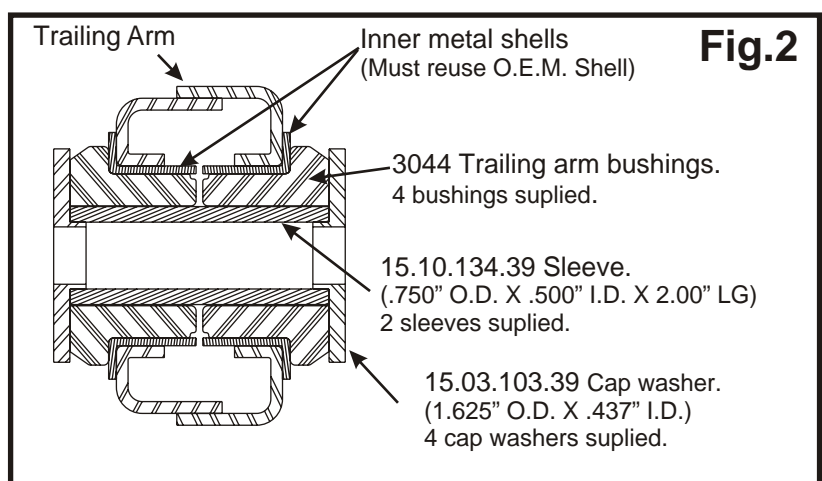
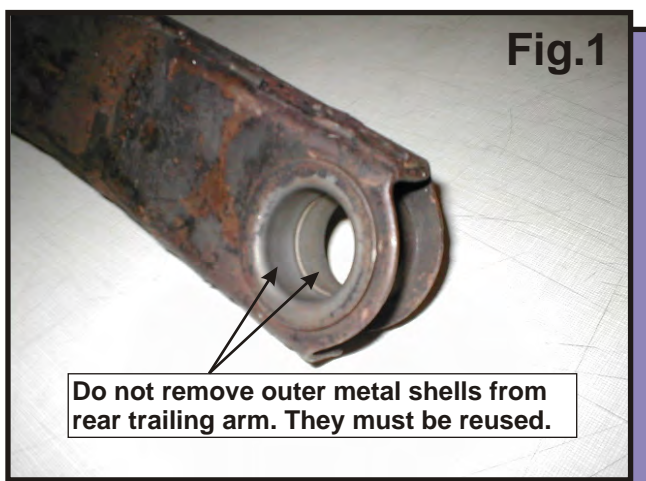


# Installation Instructions for Set # 3.3191 63-82 Corvette



1. Using an 11/16" bit, drill out flared end of inner metal retainer.
  2. Remove retaining washer and tap out inner retainer sleeve, inner metal shell and old rubber bushing.
- Note: Do not remove outer metal shell that is pressed into the trailing arm. See Fig. 1 This outer metal shell must be reused!**
3. Clean inside of inner metal shell of any old rubber or rust. When installing polyurethane bushings, apply grease as instructed: Apply light coat of grease to I.D. of the metal shell. Apply light coat of grease to the I.D. and O.D. of bushings (all surfaces that contact metal). Apply light coat of grease to the O.D. of sleeve. Apply light coat of grease to the faces of the bushings before the cap washers are installed.
  4. Refer to (Fig. 2) for assembly of your new polyurethane bushings.
  5. After applying grease to all necessary parts, use a press or vice (Fig. 3) to install the cap washers into the inner sleeve. Be sure to have the cap washers square with the new inner sleeve when pressing together (Fig. 4).
  6. Reassemble your trailing arm and install back into your vehicle according to the factory service manual. When finished, Energy Suspension recommends a four wheel alignment at a qualified service center.



**17366**