

INSTRUCTION SHEET FOR SET #3-4138

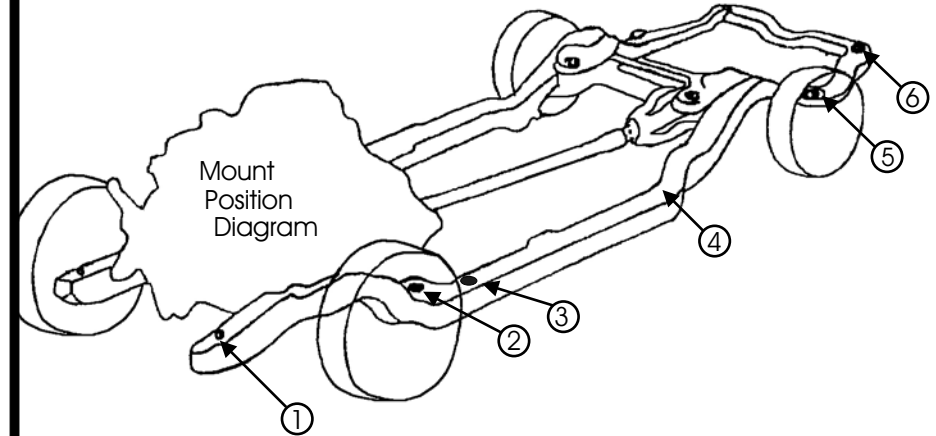
Read this instruction sheet thoroughly before initiating any work!



NOTE: When disassembling the body mounts, be sure to note the number and position of shims that may have been used to align the body. These shims will have to be reused to retain proper body alignment.

CAUTION: Remove all the body mount bolts on one side of the vehicle. Loosen but do not remove all the body mount bolts on the opposite side of the vehicle. Only raise one side of the vehicle at a time, lifting the body only high enough to remove/replace the mounts. Always watch the fan shroud, brake lines, and various hoses for sufficient clearance when raising the body. When jacking the body, use a 2x4 or equivalent to spread the weight. Never place jack faces directly on body panels!

When all mounts and hardware are installed, torque all bolts to factory specifications.

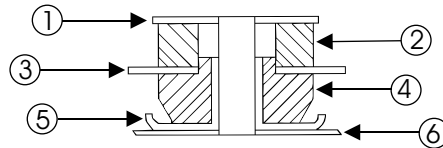


NOTE: ONE SIDE AT A TIME!!!
Install mounts one side at a time with bolts on other side loosened only.

****Possible Modification****

On some 1965 & 66 models, in order to accommodate the new Energy bushings, you may need to enlarge the holes in the frame for positions #3,4,5,6.

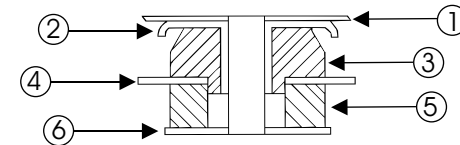
POSITION #1



****Position #2 NOTE****

Drivers Side, the clipped area on washer must be placed toward firewall to clear the angled area.

POSITIONS #2-6



Position #1

1. 2"O.D. X 7/16" I.D. Washer
2. 4109
3. Radiator Support
4. 4110
5. 1-3/4"O.D. x 7/16" I.D. Washer
6. Frame

This position uses sleeve:
3/4"x5/8"x1"

Position #2

1. Body
2. 2-1/2"O.D. - 7/16" ID. Clipped washer **note**
3. 4025
4. Frame
5. 4026
6. 2"O.D.x 7/16" I.D. Washer

This position uses sleeve:
7/8"x3/4"x1-1/2"

Position #3

2. #4111 Free standing, does not use hardware.

Position #4, #5

1. Body
2. 2-1/2"O.D. X 3/4" I.D. Washer
3. 4025
4. Frame
5. 4028
6. 2"O.D. X 7/16" I.D. Washer

This position uses sleeve:
7/8"x3/4"x1-1/2"

Position #6

1. Body
2. 2"O.D. X 7/16" I.D. Washer
3. 4072
4. Frame
5. 4073
6. 2"O.D. X 7/16" I.D. Washer

This position uses sleeve:
7/8"x3/4"x1-3/8"