

Installation instructions

For set # 3.1109

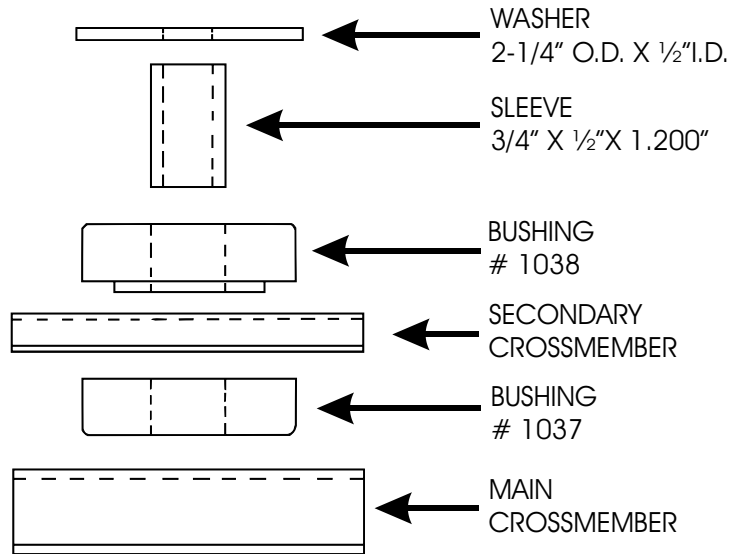
1982-92 Camaro-Firebird
Secondary crossmember mounts



© 2007 Energy Suspension. All rights reserved.
May not be reproduced, in any form, or by any means,
without the written consent of Energy Suspension.

Important:

Before reassembling x-member.
Check for cracks at main
transmount mounting area. IF
cracked, it mst be replaced or
repaired. Recommended for use
with polyurethane main transmission
mount. Part #3-1108



5/MAR/07 BRH
17107