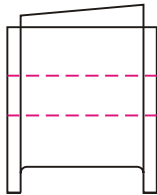


Installation Instructions



1. Remove the stock swaybar, bushing and bracket.
2. Grease the swaybar and the I.D. of the bushing.
3. Place the bushing around the swaybar making sure the taller side of the bushings are facing each other. See diagram.
4. Reinstall the factory brackets onto the bushing and reinstall onto the car. Torque fasteners to factory specs.

Short side towards
the wheels

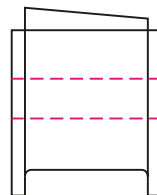


Tall side must face
each other



17154

3/26/97 KN
Updated 14/FEB/02 BRH



Short side towards
the wheels

