



FOR IMMEDIATE RELEASE:
NEW—2013-14 Cadillac ATS 2.0T
 Eibach Pro-Kit Performance Springs

The First Step In [Suspension Performance](#)

Eibach Pro-Kit is the perfect answer for most frequently-driven street cars. It's our legendary spring system that dramatically improves both a vehicle's performance and appearance.

Pro-Kit lowers your Cadillac's center of gravity, reducing squat during acceleration, body roll in corners and excessive nose-dive under braking. When combined with Plus-1 or Plus-2 wheels and tires, the Eibach Pro-Kit is the finishing touch to a winning recipe for performance. Pro-Kit also reduces excessive fender-well clearance, making your car look just as hot as it performs.

Every Eibach Pro-Kit is designed and tested by our suspension engineers and driving professionals, to deliver high performance handling and aggressive good looks, without ever compromising safety or ride quality. By using our proprietary, progressive spring design, Pro-Kit provides the ultimate balance to take your passion for driving to a whole new level.



PRO-KIT #38163.140

- High Performance Handling and Aggressive Good Looks
- Lower Center of Gravity — Lowers Cadillac 1.0" Front and 1.2" Rear
- Stop Quicker, Corner Faster and get Better MPG
- Excellent Ride Quality
- Million Mile Warranty



PRO-KIT—2013-14 CADILLAC ATS 2.0T DATA:

TECHNICAL INFORMATION

FRONT:

OE rate: 17 N/mm (97 lbs/in)

Pro-Kit progressive rate: 23 - 29 N/mm (131 - 165 lbs/in)

Bump-stop: New Eibach bump-stop

Damper: OE

OE wheel center to fender: 376 mm (14.8 in)

Pro-Kit wheel center to fender: 320 mm (13.8 in)

Front Alignment:

OE Camber = -0.5 deg (+/-0.5 deg)

OE Caster = 6.3 deg (+/-0.5 deg)

OE Toe = 0.2 +/-0.2 deg

Pro-Kit Camber = 0.0 deg

Pro-Kit Caster = 6.4 deg

Pro-Kit Toe = 0.2 deg

Approximate installation time: 1.5 hr



Before-Stock

Rear:

OE rate: 75 N/mm (428 lbs/in)

Pro-Kit progressive rate: 48-80 N/mm (274 - 456 lbs/in)

Bump-stop: New Eibach bump-stop

Damper: OE

OE wheel center to fender: 373 mm (14.7 in)

Pro-Kit wheel center to fender: 343 mm (13.5 in)

Rear Alignment:

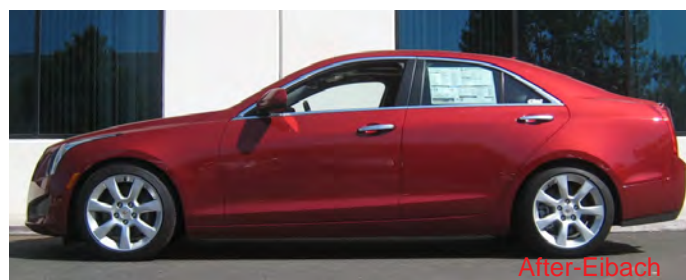
OE Camber = -0.9 (+/-0.8 deg)

OE Toe = 0.3 deg. (+/-0.2 deg)

Pro-Kit Camber = -1.5 deg.

Pro-Kit Toe = 0.3 deg

Approximate installation time: 1.5 hr



After-Eibach

MFG	Model	Year	Front	Rear	Part#
CADILLAC	ATS, 2.0T	2013-14	1.0 in	1.2 in	38163.140