

# Installation Instructions



## PRO-KIT # 6049.140

2008 Mitsubishi Lancer, Evolution X, Incl GSR and MR

Kit Contents	Description	Part Number	Qty
	Front Spring	6049.001	2
	Rear Spring	6049.002	2
	Information Kit	EPAK	1
	Instructions	6049.140INST	1

### NOTES: Read All Instructions Before Beginning Installation

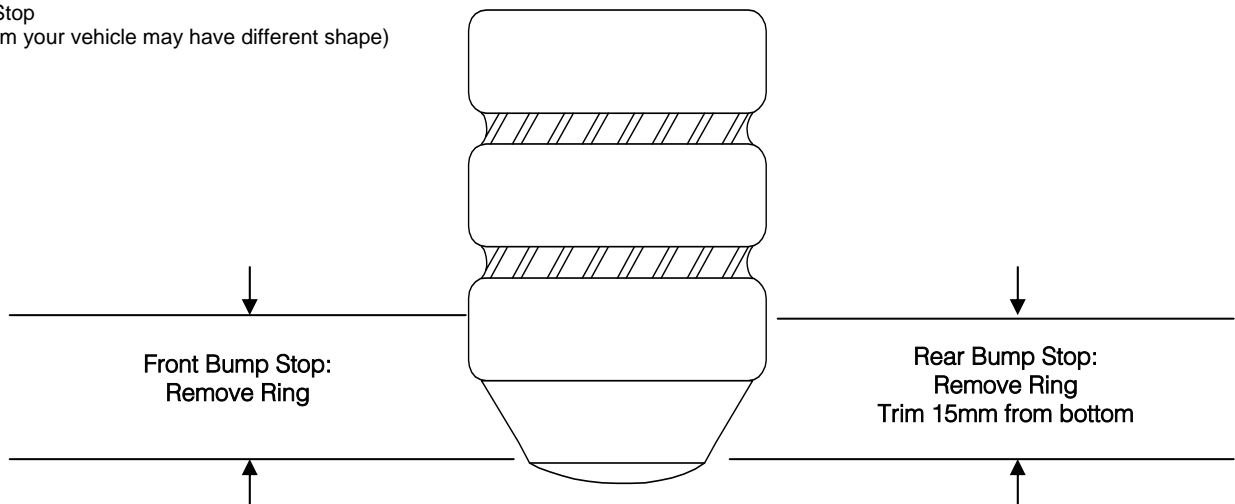
- **Only qualified mechanics experienced in the installation and removal of suspension components should perform this installation.**
- **Use** of a hoist is highly recommended and will substantially reduce installation time.
- **Never work on or under a vehicle unless it is properly supported by safety stands and wheels are blocked.**
- **PRO-KIT** springs are marked with a .001, for Front and .002, for the Rear.
- **PRO-KIT** springs should be installed with the Eibach Logo right side up. All original stock spring isolators, dampers and tubing should be retained from the stock springs and used when installing the **PRO-KIT** Springs.
- **After** installation, it is always important to inspect and adjust the following if necessary:
  - Wheel alignment such as camber, caster & toe
  - Tire and/or wheel fender clearance, when aftermarket tires and wheels are used.
  - Brake line clearance and attachments
  - Brake anti-locking and anti-skid system sensors
- **Tire Rotation:** In order to increase the life of your tires, it is recommended to rotate your tires every 3,000 miles.
- **For MacPherson type front suspension,** it is important to mark the orientation of the upper perch with respect to the lower perch before disassembly. This orientation must remain the same with the installation of the Pro Kit springs. Noise may result if this procedure is not performed correctly

### ALIGNMENT:

After installation, it will be necessary to perform a full vehicle alignment. Eibach offers the following alignment kits for this vehicle.

### Bump Stop Trimming Instructions

Typical Bump-Stop  
(Bump-Stop from your vehicle may have different shape)



# Installation Instructions



## Anti-Roll-Kit # 6049.312

2008-2011 Mitsubishi EVO X, 2.0L Turbo, Incl GSR  
2008-2011 Mitsubishi EVO X, MR, 2.0L Turbo

Kit Contents	Description	Part Number	Qty
	Rear Bar	6049.320R	1
	Anti-Roll Hardware Kit	6049.312HK	1
	Bushing/Bracket Kit	ES9.5129.01	1
	Bolt, M8-1.25 x 25mm	H25075052	4
	Information Kit	EPAK	1
	Instructions	6049.312INST	1

### NOTES: Read All Instructions Before Beginning Installation

- Only qualified mechanics experienced in the installation and removal of suspension components should perform this installation.
- Use of a hoist and screw jack is highly recommended and will substantially reduce installation time.
- **Installation time:** Is approximate .5 hour with the use of a hoist.
- **Never work on or under a vehicle unless it is properly supported.**
- **Tire Rotation:** In order to increase the life of your tires, it is recommended to rotate your tires every 3,000 miles.

### Additional Eibach Components Available For Your SUV

Eibach Kits	Part Number	Description /	Front	Rear
Pro Kit	6049.140	High Performance Handling	1.2"	1.0"

#### FACTORY REAR BAR REMOVAL

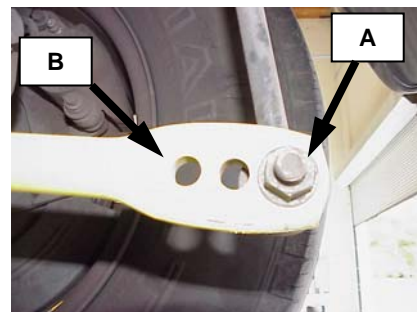
1. Begin by disconnecting the OE end links from both ends of the rear bar. Note: The end links will be re-used to install the new Eibach rear bar
2. Next remove the frame mount bushing brackets securing the bar to the rear axle.
3. Now remove the rear bar.

#### EIBACH REAR BAR INSTALLATION

1. Apply some poly lubricant to the inside of the new rear bushings and install both bushings on the new Eibach bar.
2. Install the new bar into the vehicle and secure it using the new frame mount brackets and supplied hex bolts and washers.
3. Secure the end links to the ends of the bar using the OE hardware
4. Double check to make sure everything is properly positioned prior to tightening all the hardware.

#### Tuning Rear Bar.

- A. Softest setting.
  - Reduces over-steer
  - Use in rain or on slick roads.
  - Use on rough or bumpy tracks.
  - Increases comfort.
- B. Firmest setting.
  - Reduces under-steer
  - Use on dry roads and tracks.
  - Use on smooth roads and tracks.
  - Do not use on wet or slick roads



Picture shown is for illustrative purposes only, your bar may vary slightly

# Installation Instructions



## Anti-Roll-Kit # 6049.310

2008-2009 Mitsubishi EVO X, 2.0L Turbo, Incl. GSR, Exc. MR

Kit Contents	Description	Part Number	Qty
	Front Bar	6049.320F	1
	Anti-Roll Hardware Kit	6049.310HK	1
	Front Bushing	ES5618	2
	Bushing bracket	ES15.08.01.39	2
	Bolt, M8-1.25 x 25mm	H25075052	4
	Washer, Flat	H50026900	4
	Information Kit	EPAK	1
	Instructions	6049.310INST	1

### NOTES: Read All Instructions Before Beginning Installation

- Only qualified mechanics experienced in the installation and removal of suspension components should perform this installation.
- Use of a hoist and screw jack is highly recommended and will substantially reduce installation time.
- **Installation time:** Is approximate .5 hour with the use of a hoist.
- **Never work on or under a vehicle unless it is properly supported.**
- **Tire Rotation:** In order to increase the life of your tires, it is recommended to rotate your tires every 3,000 miles.

### FACTORY FRONT BAR REMOVAL

1. Raise the vehicle off the ground and firmly support it with safety stands. **NOTE: Do not work underneath the car without the proper safety equipment.**

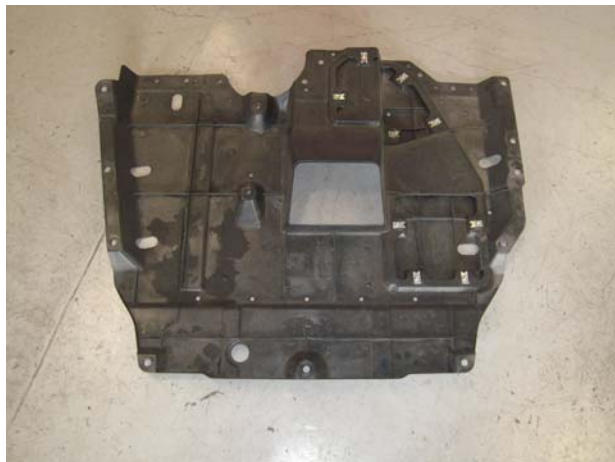


Photo 1

2. Remove the plastic rivets that secure the plastic splash guard, then, remove the splash guard. (See **Photo 1**)

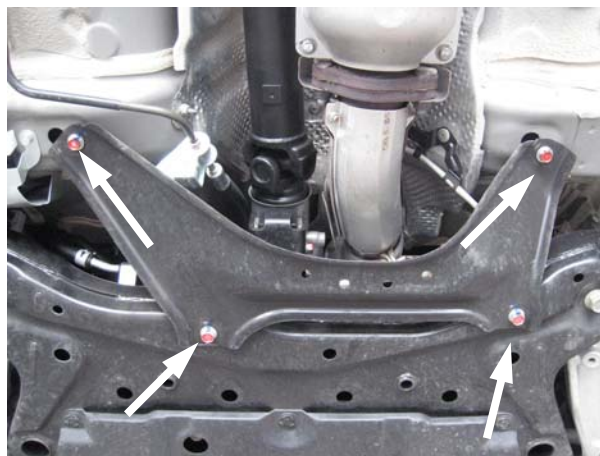


Photo 2

3. Remove the four bolts that secure the metal shield, then, remove the shield. (See **Photo 2**)

4. The subframe will have to be lowered to remove the OE sway bar, so using a screw jack, support the subframe.



Photo 3



Photo 4

5. Remove the plastic rivets that secure the front plastic valance then pull the valance downward as shown, then, remove the bolts that secure the front engine support bracket as well as the engine mount. (See Photos 3 & 4)

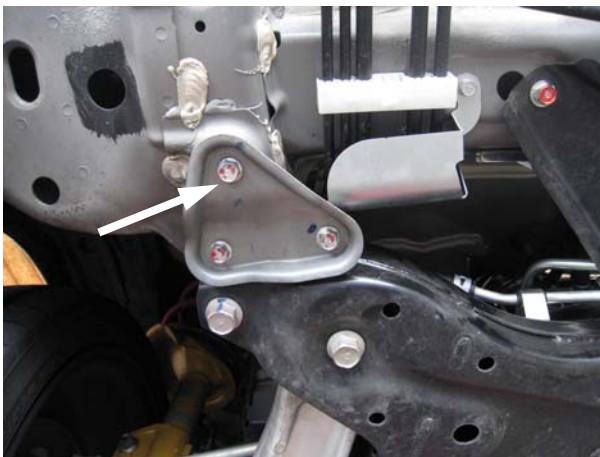


Photo 5

6. Remove the bolt (both sides) that secures the subframe bracket to the body of the car. (See Photo 5)



Photo 6



Photo 7

7. With the subframe firmly supported, remove the six bolts that secure the subframe to the body of the car. Note: two of the bolts are located above the lower control arm and are accessible through the hole in the lower control arm. (See Photos 6 & 7)



Photo 8

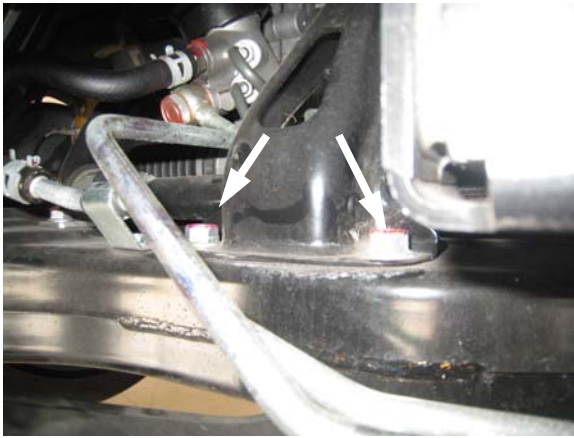


Photo 9

8. Lower the subframe down just enough to gain access to the rear engine support bracket, then, remove the three bolts that secure the engine support bracket to the subframe. (See Photos 8 & 9) **Note: Be careful when lowering the subframe downwards as the steering rack is still bolted to the subframe.**



Photo 10



Photo 11

9. Remove the bolts that secure the power steering hose brackets to the subframe. (See Photos 10 & 11)

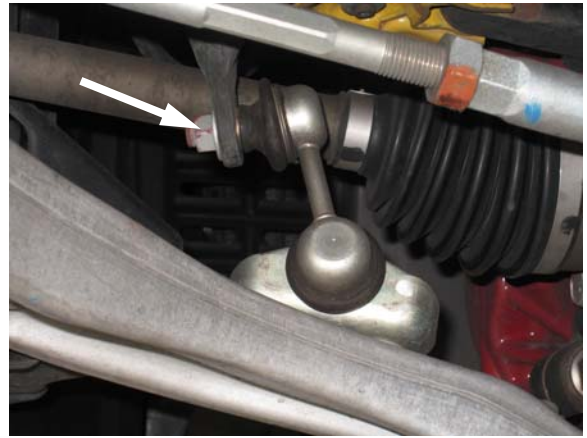


Photo 12

10. Disconnect the end links from both ends of the OE sway bar. **Note: The OE end links will be reused for the installation of the Eibach anti-roll bar. (See Photo 12)**



Photo 13



Photo 14

11. Remove both the left and right side OE bushing brackets. (See Photo 13 & 14)
12. Lower the subframe just enough to remove the bar towards the back of the subframe.

## EIBACH FRONT BAR INSTALLATION

13. Apply some lubricant to the inside of the new Eibach bushings.
14. Install the new bushings onto the Eibach Bar.



Photo 15

15. Install the Eibach bar into the vehicle and secure it with the new Eibach bushing brackets and the supplied bolts and washers. **(See Photo 15)**



Photo 16

16. Secure the end links to the ends of the Eibach anti-roll bar using the OE nut. **(See Photo 16)**
17. Raise the subframe upwards and secure everything in the reverse order of removal.