

Installation Instructions



Sportline- #4.3140

Honda, Civic 2006-2007 (All Models Incl Hybrid)

Kit Contents	Description	Part Number	Qty
	Front Spring, Right	4.3140F	1
	Front Spring, Left	4.3140FL	1
	Rear Spring	4.3140R	2
	Crush Sleeve	SLV-60660	2
	Information Kit	EPAK	1
	Instructions	4.3140INST	1

NOTES: Read All Instructions Before Beginning Installation

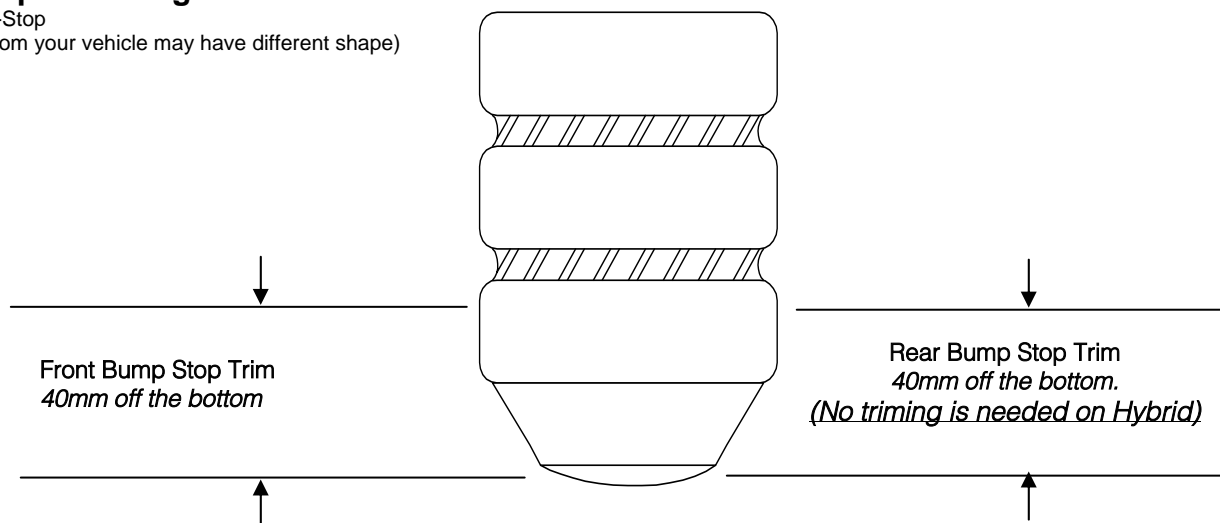
- Installation of a **Sportline** Spring set should only be performed by a qualified mechanic experienced in the installation and removal of suspension springs.
- Use of a hoist is highly recommended and will substantially reduce installation time.
- **Never work on or under a vehicle unless it is properly supported by safety stands and wheels are blocked.**
- **Sportline** Springs are marked with an “F” and an “R” (located at the end of the part number) designating front and rear springs.
- **Sportline** Springs should be installed with the **Eibach** Logo right side up. All original stock spring isolators, dampers and tubing should be retained from the stock springs and used when installing the **Sportline** Springs.
- **After** installation, it is always important to inspect and adjust the following if necessary:
 - Wheel alignment such as camber, caster & toe.
 - Tire and/or wheel fender clearance.
 - Brake line clearance and attachments.
 - Brake anti-locking and anti-skid system sensors.
- **Tire Rotation:** In order to increase the life of your tires, it is recommended to rotate your tires every 3,000 miles.

ALIGNMENT: After installation, it will be necessary to perform a full vehicle alignment using factory specifications.

Note: During installation of the Eibach rear springs it is extremely important that all bushing related pivot points be re-torqued with the full weight of the vehicle on the suspension, this is done to prevent “bushing pre-load”. This is easiest with the vehicle on a drive on type of hoist. If this is not done, bushing damage and un-even lowering may result.

Bump Stop Trimming Instructions

Typical Bump-Stop
(Bump-Stop from your vehicle may have different shape)



(No trimming is needed on Hybrid)

Rear bump stop removal

1. Remove the stock rear shocks from the vehicle.
2. Drill out the pinch point on the crush sleeve being careful not to damage the rod. See photo 1.



Photo1

3. Remove the crush sleeve being careful not to damage the rod or the threads.
4. Remove the washer.
5. Remove the plastic boot.
6. Using a mallet or hammer gently tap upward on the bump stop retainer. See photo 2.



Photo 2

8. Remove the bump stop and trim according to the bump stop trimming directions shown on page 1.

9. Install newly trimmed bump stop onto OE shock along with bump stop retainer, dust boot, washer, and rubber bushing.
10. Install new crush sleeve part # SLV-60660 that is provided in the kit. Photo 3 shows the shock reassembled with the new sleeve.



Photo 3

11. Re-install the rear shock.

Installation Instructions



Anti-Roll-Kit # 4031.312

2006-2013 Honda Civic, All, Exc. Hybrid
2013-14 Acura ILX, 2.4L 4 Cyl.

Kit Contents	Description	Part Number	Qty
	Rear Bar	4031.320R	1
	Anti-Roll Hardware Kit	4031.312HK	1
	Information Kit	EPAK	1
	Instructions	4031.312INST	1

NOTES: Read All Instructions Before Beginning Installation

- Only qualified mechanics experienced in the installation and removal of suspension components should perform this installation.
- Use of a hoist and screw jack is highly recommended and will substantially reduce installation time.
- Installation time: Is approximate .5 hour with the use of a hoist.
- Never work on or under a vehicle unless it is properly supported.
- Tire Rotation: In order to increase the life of your tires, it is recommended to rotate your tires every 3,000 miles.

FACTORY REAR BAR REMOVAL



Photo 1

1. Begin by removing rear OE end link assembly from both ends of the factory bar. Note: The end links will be re-used to install the new Eibach rear bar.



Photo 2

2. Next remove the frame mount bushing brackets securing the bar to the vehicle. Note: The brackets will be re-used to install the new Eibach rear bar.
3. Now remove the rear bar from the vehicle. **Note: Be sure to take note of the orientation of the rear bar as the Eibach bar will be installed in the same orientation.**

EIBACH REAR BAR INSTALLATION

1. Apply some poly lubricant to the inside of the new rear bushings.
2. Installed the new bushings on the Eibach bar.



Photo 3

3. Install the new Eibach rear bar using the stock bushings brackets. (See Photo 3)



Photo 4

4. Secure the OE end links to the new Eibach bar using the OE nuts. (See Photo 4)
5. Double check to make sure everything is properly tightened and positioned before driving the vehicle.

Installation Instructions



Anti-Roll-Kit # 4031.310

2006-2008 Honda Civic, All, exc. Hybrid

Kit Contents	Description	Part Number	Qty
	Front Bar	4031.320F	1
	Anti-Roll Hardware Kit	4031.310HK	1
	Information Kit	EPAK	1
	Instructions	4031.310INST	1

NOTES: Read All Instructions Before Beginning Installation

- Only qualified mechanics experienced in the installation and removal of suspension components should perform this installation.
- Use of a hoist and screw jack is highly recommended and will substantially reduce installation time.
- **Installation time:** Is approximate .5 hour with the use of a hoist.
- **Never work on or under a vehicle unless it is properly supported.**
- **Tire Rotation:** In order to increase the life of your tires, it is recommended to rotate your tires every 3,000 miles.

FACTORY FRONT BAR REMOVAL



Photo 1

1. Begin by removing front OE end link assembly from both ends of the factory bar. **(See Photo 1)** Note: The end links will be re-used to install the new Eibach front bar.

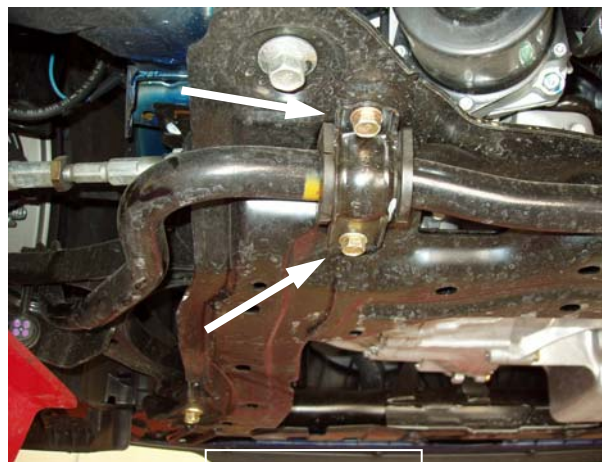


Photo 2

2. Next remove the frame mount bushing brackets securing the bar to the vehicle. **(See Photo 2)** Note: The brackets will be re-used to install the new Eibach front bar.
3. Now remove the front bar from the vehicle.

EIBACH FRONT BAR INSTALLATION

1. Due to the increased size of the Eibach front anti-roll bar it will be necessary to use a hammer and a drift to create some clearance for the new Eibach front bar.

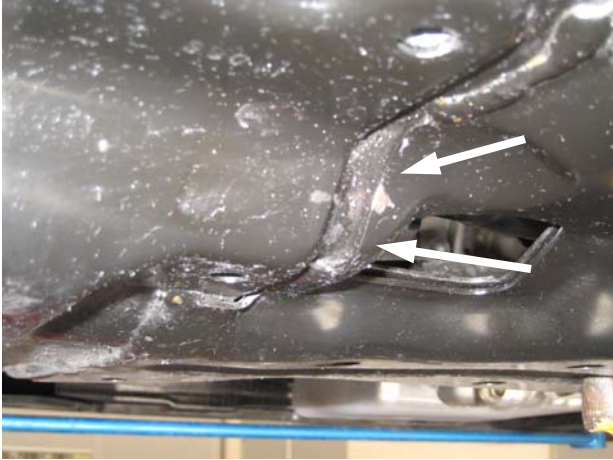


Photo 3



Photo 4

2. Using a hammer and drift, bend the metal as shown, when finished, scuff the paint with some sandpaper and touch it up with some paint. **(See Photos 3 & 4)**
3. Apply some poly lubricant to the inside of the new front bushings.
4. Installed the new bushings on the Eibach bar.

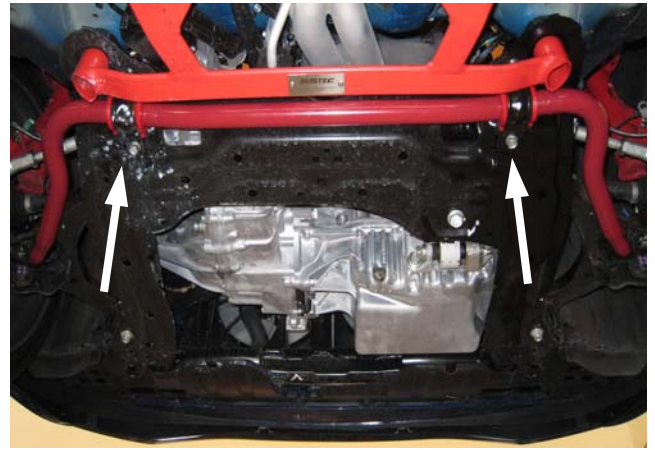


Photo 5

5. Install the new Eibach front bar using the stock bushing brackets. **(See Photo 5)**



Photo 6

6. Secure the OE end links to the new Eibach bar using the OE nuts. **(See Photo 6)**
7. Double check to make sure everything is properly tightened and positioned before driving the vehicle.