



Installation Instructions

All-Terrain Lift Kit – # 28108.980

2011-13 Jeep Grand Cherokee, 2WD/4WD, V6 3.6L, V8 5.7L
(Excluding vehicles with Tow Package & SRT-8)

All-Terrain Lift Kit – # 28107.980

2011-13 Jeep Grand Cherokee, 2WD/4WD, V6 3.6L, V8 5.7L
For vehicles with Tow Package (Excluding SRT-8)

Kit Contents	Description	Part Number	Qty
	Front Damper	28108.8001	2
	Rear Damper (non tow package)	28108.8002	2
	Rear Damper (tow package only)	28107.8002	2
	Front Spring	28108.601	2
	Rear Spring	28108.602	2
	Information Kit	EPAK	1

NOTES: **Read All Instructions Before Beginning Installation**

1. Park vehicle on level surface and set emergency brake. Raise and support the vehicle with safety stands. Refer to factory manual for proper location of safety stands.
2. Power washing your chassis will make the installation cleaner.
 - **NOTE:** Never work on or under a vehicle unless it is properly supported by safety stands.
3. Follow the manufacturers recommended procedure for removal and installation of the front and rear dampers.





Front Spring Perch Installation (V8 only)

Remove the OE spring perch from the OE strut and install it onto the Eibach Pro Damper. **Note: The provided spacer is for use on V8 equipped vehicles only. (See Photos 1, 2 & 3)**



Photo 1



Photo 2

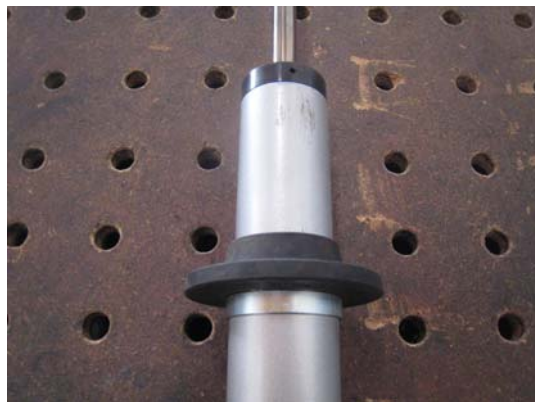


Photo 3

Note: The Spacer must be installed with the counterbore facing downward over the shoulder. Improper installation will cause permanent damage to the shock. (See Photo 2)

Front Spring Perch Installation (V6 only)

Remove the provided spacer from the Eibach Pro Damper, then, install the OE spring perch onto the Pro Damper as shown. **Note: The provided spacer must be removed for use on V6 equipped vehicles. (See Photos 4, 5 & 6)**

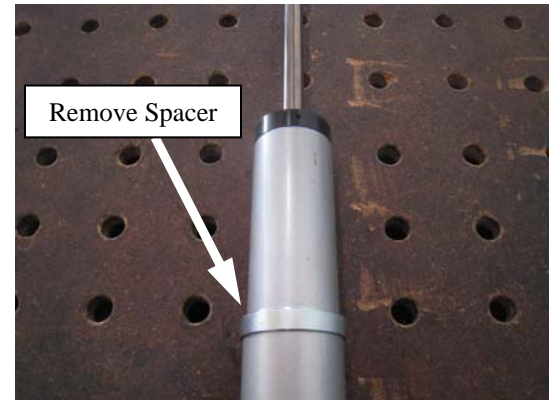


Photo 4

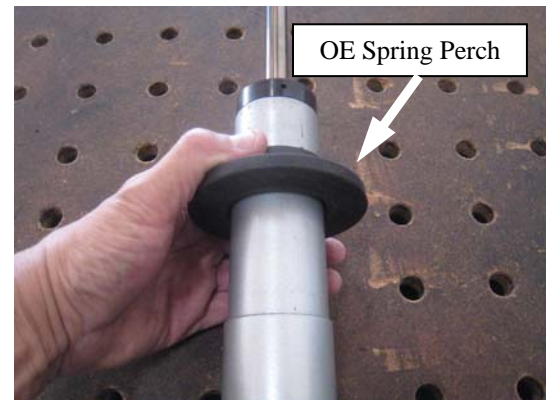


Photo 5

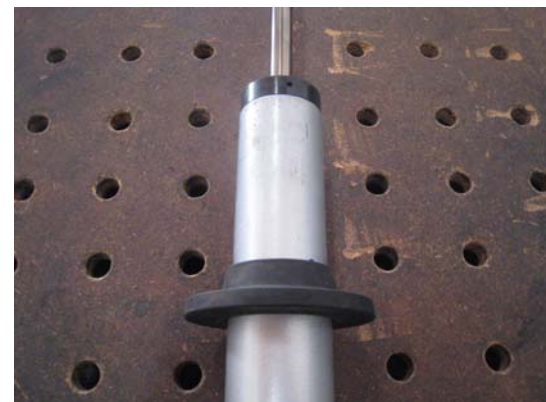


Photo 6