

Installation Instructions



Anti-Roll-Kit # 2895.310

2008-2009 Challenger SRT8, 6.1L V8

Kit Contents	Description	Part Number	Qty
	Front Bar	2895.320F	1
	Anti-Roll Hardware Kit	2895.310HK	1
	Front Bushing	UB0216	2
	Information Kit	EPAK	1
	Instructions	2895.310INST	1

NOTES: Read All Instructions Before Beginning Installation

- **Only qualified mechanics experienced in the installation and removal of suspension components should perform this installation.**
- **Use** of a hoist and screw jack is highly recommended and will substantially reduce installation time.
- **Installation time:** Is approximate .5 hour with the use of a hoist.
- **Never work on or under a vehicle unless it is properly supported.**
- **Tire Rotation:** In order to increase the life of your tires, it is recommended to rotate your tires every 3,000 miles.

FACTORY FRONT BAR REMOVAL

1. Begin by removing front OE end link assembly from both ends of the factory bar. **Note: The end links will be re-used to install the new Eibach front bar.**
2. Loosen and remove the bolts that secure the OE bushing brackets to the subframe. **Note: The OE brackets will be re-used to install the new Eibach front bar.**
3. You can now safely remove the front bar from the vehicle

EIBACH FRONT BAR INSTALLATION

1. Apply some poly lubricant to the inside of the new front bushings.
2. Installed the new bushings and the OE bushing clamps back onto the Eibach bar.
3. Installation of the new Eibach front bar is the reverse order of disassembly.

Installation Instructions



Anti-Roll-Kit # 2895.312

2008-2009 Dodge Challenger SRT-8, R/T, SE

Kit Contents	Description	Part Number	Qty
	Rear Bar	2895.320R	1
	Anti-Roll Hardware Kit	2895.312HK	1
	Rear bushings	UB0215	2
	Information Kit	EPAK	1
	Instructions	2895.312INST	1

NOTES: Read All Instructions Before Beginning Installation

- Only qualified mechanics experienced in the installation and removal of suspension components should perform this installation.
- Use of a hoist and screw jack is highly recommended and will substantially reduce installation time.
- **Installation time:** Is approximately 2.5 hours with the use of a hoist.
- **Never work on or under a vehicle unless it is properly supported.**
- **Tire Rotation:** In order to increase the life of your tires, it is recommended to rotate your tires every 3,000 miles.

Additional Eibach Components Available For Your Car

Eibach Kits	Part Number	Description	Front	Rear
<i>Pro-Kit</i>	2895.140	High Performance Handling	1.0 In.	1.0 In.
<i>Sportline</i>	4.9528	High Performance Handling	TBD	TBD
<i>Pro Street S</i>	2895.711	Coil-overs – Height Adjustable	TBD	TBD
<i>Multi-Pro R1</i>	2895.712	Coil-overs – Height & Single Damping Adj.	TBD	TBD
<i>Multi-Pro R2</i>	2895.712	Coil-overs – Height & Dual Damping Adj.	TBD	TBD

FACTORY REAR BAR REMOVAL

1. After the car is raised and firmly supported by safety stands, remove the rear wheels.
2. Remove the nuts that secure the end links to the OE anti-roll bar. Repeat on the opposite side. See photo 1



Photo 1

3. Remove the bolt that secures the brake line bracket to the inner fender. Then lower brake line downward as shown in photo 2. **Note:** The bolt is located behind plastic fender lining. Repeat on opposite side.

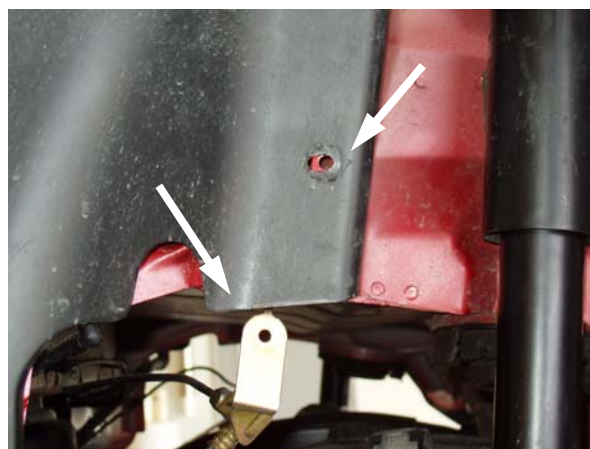


Photo 2.

4. Remove the upper shock mount bolts on both sides of the vehicle. See photo 3



Photo 3

5. Remove the two bolts that secure the muffler to the under side of the body. Repeat on the opposite side. See photo 4.

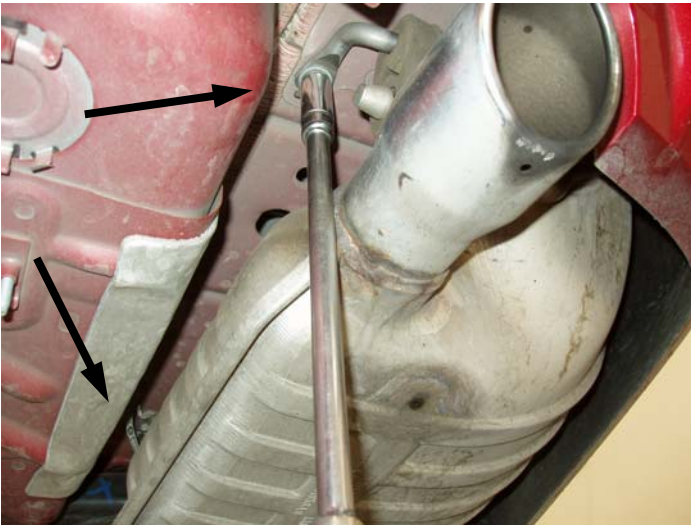


Photo 4.

6. Remove the two exhaust hangers from the rubber grommets. See photo 5.

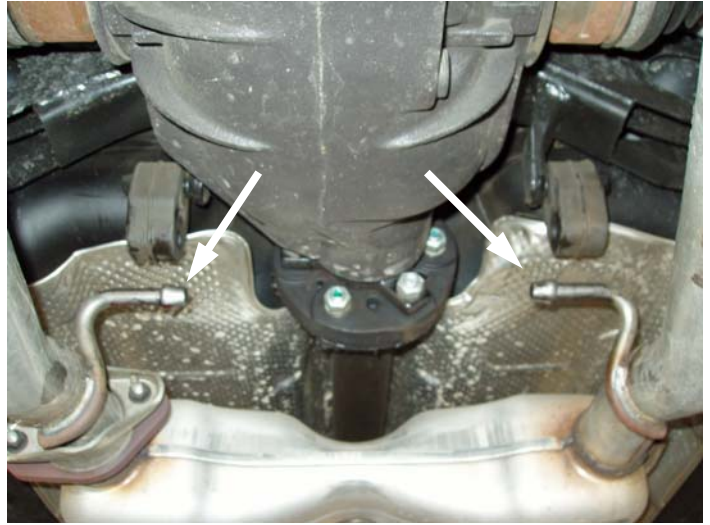


Photo 5.

7. Support the rear differential using a floor jack. Then loosen the 4 sub frame bolts.
8. Lower the sub frame just enough to remove the rear bushing brackets and the anti-roll bar.

Warning
Lower slowly and double check that all brake lines, cables and electrical lines are not binding or stretching.

9. Loosen and remove the bolts that secure the bushing brackets. See photo 6.

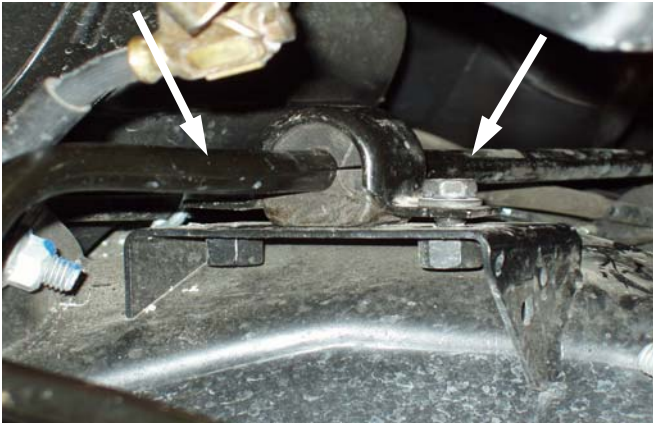


Photo 6.

10. After removing the OE bushing brackets you can remove the anti-roll bar from the vehicle.

EIBACH REAR BAR INSTALLATION

1. Locate the two new rear bushings (Part# UB0215) and apply the supplied lubricant to the inside of the new bushings. Install the bushings on to the new Eibach Rear bar with the "cut" portion toward the rear of the vehicle.
2. Install the new anti-roll bar into the vehicle using the new bushings and the factory brackets, then, secure it with the OE bolts. See photo 7.

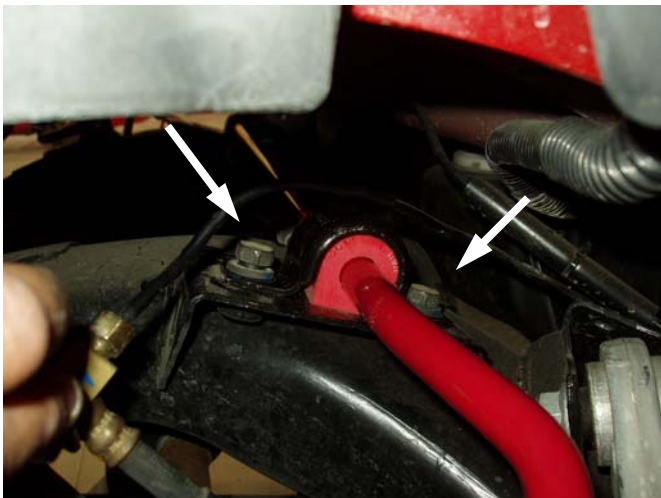


Photo 7

3. Raise the rear sub frame and secure it with the stock bolts.
4. Reconnect the upper shock mounts.

5. Secure the brake line brackets to their original positions.
6. Reconnect the end links to the anti-roll bar using the OE nuts. See photo 8.



Photo 8

7. Reverse the removal process for the exhaust.
8. Reinstall wheels and torque to factory specifications.

Installation Instructions



PRO-KIT- # 28101.140

2011+ Chrysler 300, 2WD, V6, Exc. AWD

Kit Contents	Description	Part Number	Qty
	Front Spring	28111.001	2
	Rear Spring	28105.002	2
	Information Kit	EPAK	1
	Instructions	28101.140INST	1

NOTES: Read All Instructions Before Beginning Installation

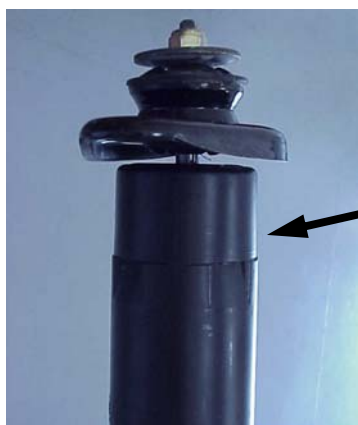
- Installation of a **PRO-KIT Spring** set should only be performed by a qualified mechanic experienced in the installation and removal of suspension springs.
- Use of a hoist is highly recommended and will substantially reduce installation time.
- **Never work on or under a vehicle unless it is properly supported by safety stands and wheels are blocked.**
- **PRO-KIT** Springs are marked with the numbers 01 and 02 (located at the end of the part number) designating front and rear springs.
- **PRO-KIT** Springs should be installed with the **Eibach** Logo right side up. All original stock spring isolators, dampers and tubing should be retained from the stock springs and used when installing the **PRO-KIT** Springs.
- **After** installation, it is always important to inspect and adjust the following if necessary:
 - Wheel alignment such as camber, caster & toe.
 - Tire and/or wheel fender clearance.
 - Brake line clearance and attachments.
 - Brake anti-locking and anti-skid system sensors.
- **Tire Rotation:** In order to increase the life of your tires, it is recommended to rotate your tires every 3,000 miles.

ALIGNMENT: After installation, it will be necessary to perform a full vehicle alignment using factory specifications.

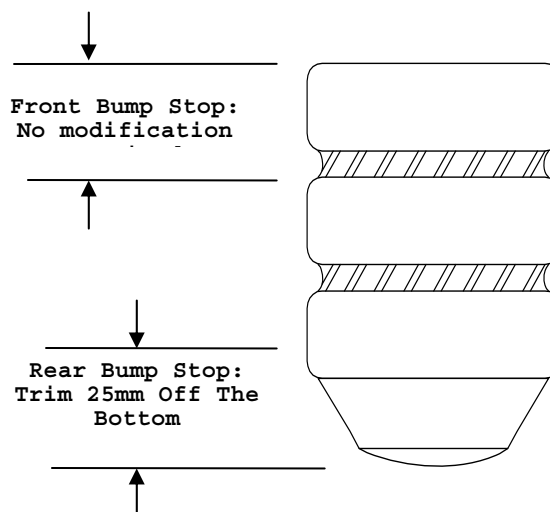
Note: During installation of the Eibach rear springs it is extremely important that all bushing related pivot points be re-torqued with the full weight of the vehicle on the suspension, this is done to prevent "bushing pre-load". This is easiest with the vehicle on a drive on type of hoist. If this is not done, bushing damage and un-even lowering may result.

Bump Stop Trimming Instructions

Typical Bump-Stop
(Bump-Stop from your vehicle may have different shape)



You must remove the rear shock, then, remove the upper mount to access the rear bump stop which is located underneath the OE dust boot



Bushing Pre-Load

The following steps should be followed in order to get the proper amount of lowering and to ensure longevity of the OE suspension bushings.



Photo 1



Photo 2

1. During the installation of the rear springs, **do not tighten** the lower control arm or the lower shock mount when the vehicle is up in the air and the suspension is at full droop. **(See Photos 1 & 2)**



Photo 3

2. Place a screw jack or floor jack under the knuckle, raise the suspension upwards to static height, then, tighten the inner control arm bolt and lower shock mount bolt. **(See Photo 3)**