

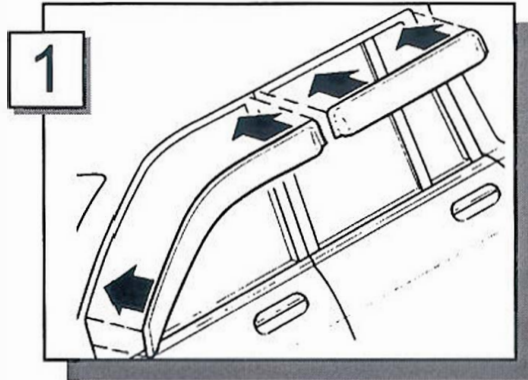


**Note:** Before commencing installation, clean and dry the door frame.

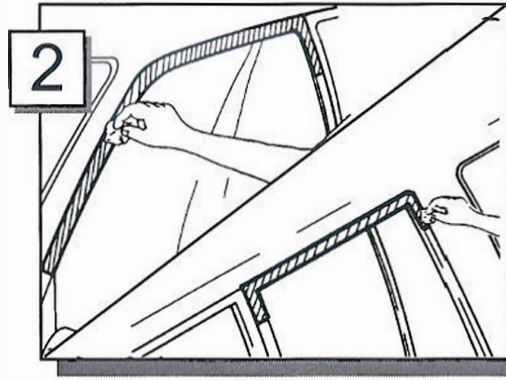
**WARNING: DO NOT INSTALL WINDOWVISOR AT TEMPERATURES BELOW 10°C (50°F). IDEAL INSTALLATION TEMPERATURE IS BETWEEN 20°C - 40°C (70° - 105°F). WINDOWVISOR WILL ADHERE SUCCESSFULLY AT TEMPERATURES BELOW 10C AFTER INITIAL CURING. FULL TAPE STRENGTH IS ACHIEVED AFTER 72 HRS. IMPORTANT: ALLOW THE TAPE TO CURE FOR 4 HOURS BEFORE DRIVING VEHICLE.**

## INSTALLATION INSTRUCTIONS

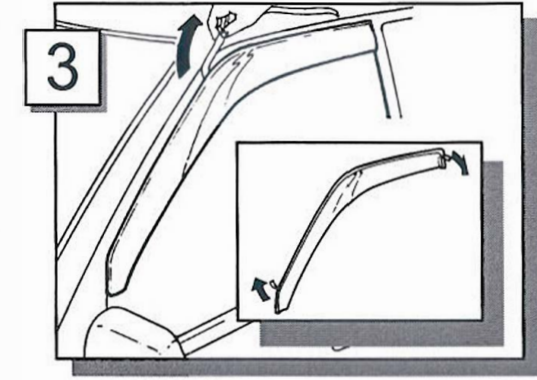
### SLIMLINE<sup>™</sup> WINDOW VISOR



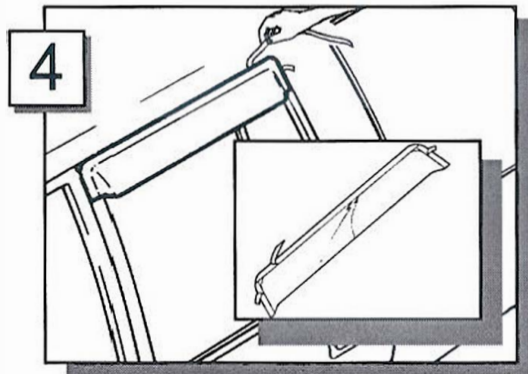
- Trial fit front **WINDOWVISOR** and rear **WINDOWVISOR** (if provided) to door frame.
- Note area of tape attachment.



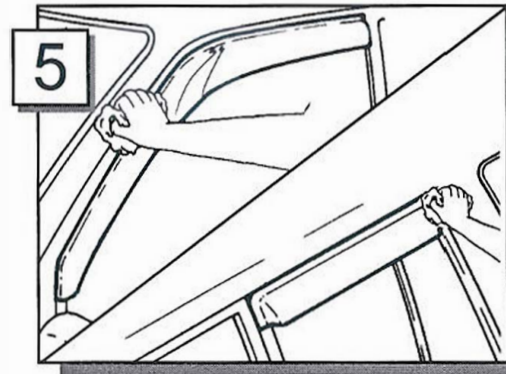
- Clean front and rear tape attachment areas with alcohol wipe provided.
- Wipe dry with a clean dry cloth .



- Peel back approximately 2" of tape liner in area shown.
- Align front **WINDOWVISOR** with door frame and apply light pressure to exposed tape areas.
- Peel off remaining tape liner.



- Peel back approximately 2" of tape liner in area shown.
- Align rear **WINDOWVISOR** with door frame and apply light pressure to exposed tape areas.
- Peel off remaining tape liner.



- Rub down firmly several times to ensure maximum adhesion.

**To Clean:** Use mild detergent and water solution. (Do **NOT** use solvents).