

Note: Before commencing installation, clean and dry the door frame.

WARNING: DO NOT INSTALL WINDOWVISOR AT TEMPERATURES BELOW 10°C (50°F).

IDEAL INSTALLATION TEMPERATURE IS BETWEEN 20°C - 40°C (70° - 105°F).

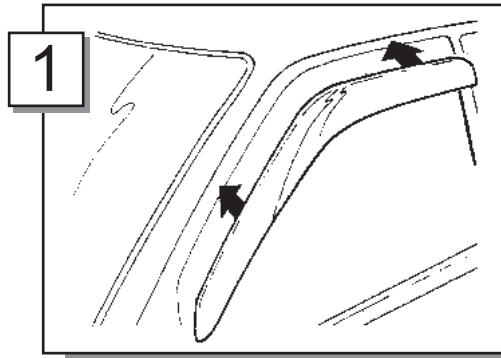
WINDOWVISOR WILL ADHERE SUCCESSFULLY AT TEMPERATURES BELOW 10°C AFTER INITIAL CURING. FULL TAPE STRENGTH IS ACHIEVED AFTER 72 HRS.

IMPORTANT: ALLOW THE TAPE TO CURE FOR 4 HOURS BEFORE DRIVING VEHICLE.

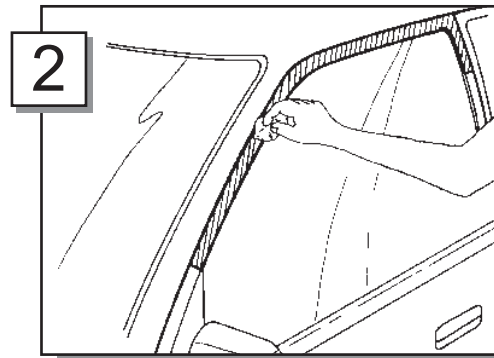
EGR

INSTALLATION INSTRUCTIONS

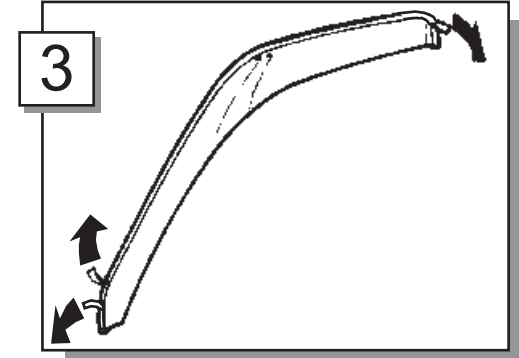
TM



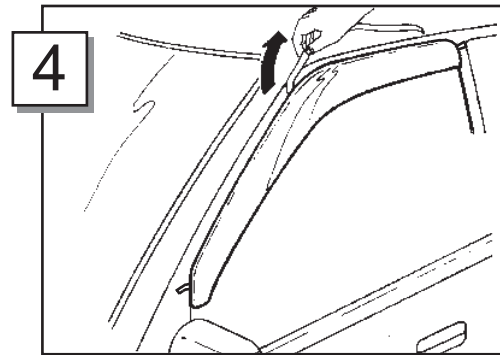
- Trial fit [WINDOW VISOR](#) to door frame.
- Note area of tape attachment on door frame and mirror base.



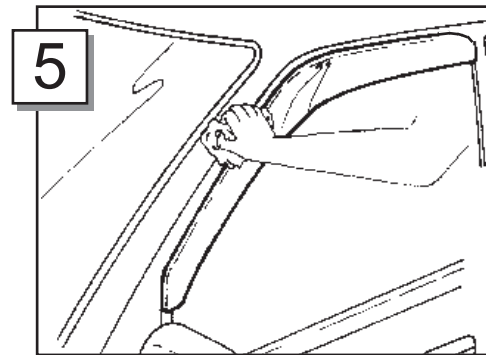
- Clean tape attachment area with alcohol wipe provided.



- Peel back approximately 2" of tape liner in areas shown.



- Align **WINDOWVISOR** with door frame and apply light pressure to exposed tape areas.
- Peel off remaining tape liner.



- Rub down firmly several times to ensure maximum adhesion.

To Clean: Use mild detergent and water solution. (Do **NOT** use solvents).