



# EDELBROCK VALVE COVERS 4100, 4200, 4400, & 41000 Series INSTALLATION INSTRUCTIONS

**PLEASE** study these instructions carefully before beginning this installation. Most installations can be accomplished with common tools and procedures. However, you should be familiar with and comfortable working on your vehicle. If you do not feel comfortable performing this installation, it is recommended to have the installation completed by a qualified mechanic.

**DESCRIPTION:** Edelbrock offers several valve covers for several engine models. See the catalog for application listing. Installation is the same as original equipment valve covers. All aluminum covers require that baffles be installed if breathers are used. Some racing valve covers require that holes be machined for breathers if breathers are desired. Signature Series valve covers include baffles. Check for clearance between baffles and rocker arms. Trim baffles slightly if necessary. **Edelbrock valve cover gaskets are recommended to ensure a tight seal and perfect fit. Refer to the table below for the recommended gasket part number for your application.**

**INSTALLATION NOTES FOR ALUMINUM VALVE COVERS (4100 & 4200 SERIES PART NUMBERS):**

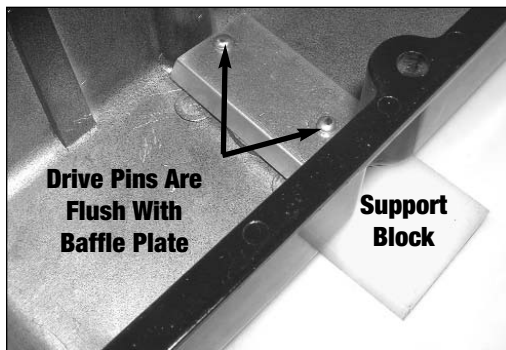
- For applications using breathers/PCV, attach the breather baffles using the supplied drive pins or self-tapping screws. If your valve covers include drive pins, use a punch and hammer to tap the pins in until fully seated (**See Fig. 1**). On valve covers without breather holes, the breather holes must be drilled/machined before attaching the baffles.

**CAUTION!** WHEN DRIVING THE PINS INTO THE VALVE COVER, YOU MUST SUPPORT THE BACK SIDE OF THE VALVE COVER WITH A BLOCK OF WOOD, OR OTHER NON-MARRING SURFACE. FAILURE TO DO SO COULD RESULT IN DAMAGE TO THE COVER, SUCH AS CRACKS, DENTS, ETC. (**See Fig. 1**).

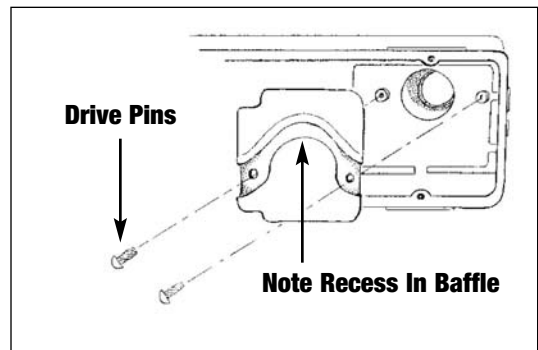
- Recessed Baffles:** Some valve covers include baffles with a curved recess across them. Make note of the position of the baffle. The recess in the baffle plate should be positioned as shown below (**See Fig. 2**).
- Breather Knockouts:** Centerbolt covers are intended for use with OEM breather and PCV valve. If the application calls for non-OEM push-in breathers, remove the “knockout ring” from the breather holes using a hammer and a large punch. Be sure to support the perimeter of the breather hole with a large socket, or block of wood. Perform this procedure BEFORE installing the breather baffles.
- Pontiac:** Elite Valve Covers #4256 for Pontiac V8s will require that spacers be used to provide clearance for the A/C compressor bracket. Install the spacers under the bracket at the intake manifold.
- Small Block Chevrolet:** 1986 and earlier Small block Chevrolet engines with EGR may require #1476 and/or GM #14031368 spacers to provide clearance for the EGR valve, especially with “tall profile” valve covers.
- Big Block Chevrolet:** Some roller rockers may contact the inside corner of the valve cover. If evidence of this contact is seen, it is recommended to have the corner of the rocker arm radiused slightly to allow sufficient clearance throughout its full travel.

**Edelbrock Valve Cover Gaskets**

Make	Engine Family	Part Number
AMC	290-401	7532
Chevy	302-400	7549
Chevy	348-409	7582
Chevy	396-454	7580
Chrysler	318-360	7592
Chrysler	Magnum	7593
Chrysler	361-440	7591
Ford	302-351W	7560
Ford	351C	7569
Ford	390-428	7568
Ford	429-460	7563
Oldsmobile	400-455	7598
Pontiac	326-455	7590



**Fig 1. - Baffle Plate Installation**  
Support the back of the valve cover while tapping drive pins into place.



**Fig. 2 - Recessed Baffle Installation**  
Make sure recess faces out, and the curved portion faces towards the side closest to the intake manifold.