



## WARNING!

Failure to install or use this product according to manufacturers recommendations may result in property damage, serious bodily/personal injury, and/or death to you and those you are seeking to protect!



**Do not install and/or operate this safety product unless you have read and understand the safety information contained in this manual.**

1. Proper installation combined with operator training in the use, care, and maintenance of emergency warning devices are essential to ensure the safety of you and those you are trying to protect.
2. Exercise caution when working with live electrical connections.
3. This product must be properly grounded. Inadequate grounding and/or shorting of electrical connections can cause high current arcing, which can cause personal injury and/or severe vehicle damage, including fire.
4. Proper placement and installation are vital to the performance of this warning device. Install this product so that output performance of the system is maximized and the controls are placed within convenient reach of the operator so that s/he can operate the system without losing eye contact with the roadway.
5. It is the responsibility of the vehicle operator to ensure during use that all features of this product work correctly. In use, the vehicle operator should ensure the projection of the warning signal is not blocked by vehicle components (i.e., open trunks or compartment doors), people, vehicles, or other obstructions.
6. The use of this or any other warning device does not ensure all drivers can or will observe or react to a warning signal. Never take the right-of-way for granted. It is your responsibility to be sure you can proceed safely before entering an intersection, driving against traffic, responding at a high rate of speed, walking on or around traffic lanes.
7. This equipment is intended for use by authorized personnel only. The user is responsible for understanding and obeying all laws regarding warning signal devices. Therefore, the user should check all applicable city, state, and federal laws and regulations. The manufacturer assumes no liability for any loss resulting from the use of this warning device.

## Specifications:

### SW30 [Extra Heavy Duty Switch](#)

Current rating: 5 amps @ 12 VDC

Weight: 16 oz.

Size: 7.3" x 5.3" x 1.2"



## CAUTION:

This switch is intended for use in a backup alarm application only. It should only be used in accordance with the application described in this instruction manual. It is not intended to be used in conjunction with, or in combination with any other devices.

## Installation & Mounting:

1. Select a convenient location for mounting the switch, either at the reverse gear linkage or shift lever, so the outer end of the switch actuation arm will be moved a minimum of one inch when vehicle is put into reverse gear. Contact with the actuating arm should be made approx. 1½" from its end.
2. Thread two 14 or 16 gauge wires to this switch location, one from the positive terminal of the back-up alarm and the other from a fused power source.
3. Remove the cover from the switch housing. Crimp a spade terminal onto the wire ends to ensure proper connections. Insert wires through the wire clamp, into the switch housing. Connect the fused power supply to the Common (C) terminal, and the back-up alarm power wire to the Normally Open (NO) terminal. Do not make any connection to the normally closed (NC) terminal. See Figure 1.
4. Attach the cover & gasket with the mounting screws, and tighten wire clamp. Bolt the switch in place on vehicle.
5. Check back-up alarm system for proper operation each day before using vehicle. If alarm does not function, check for proper wiring installation. If alarm still does not function, check to make sure actuating arm is moving one inch.

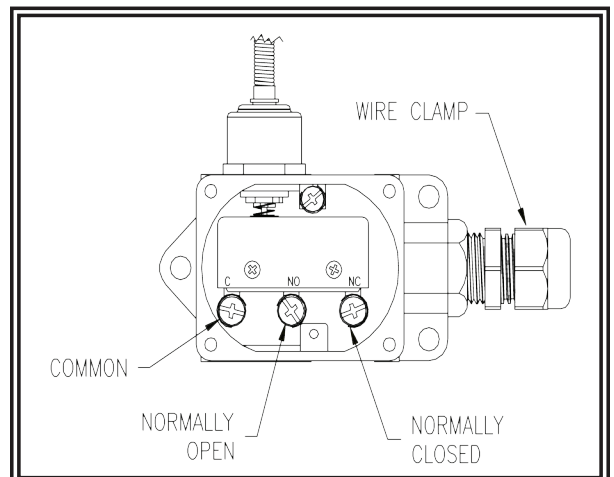


Figure 1