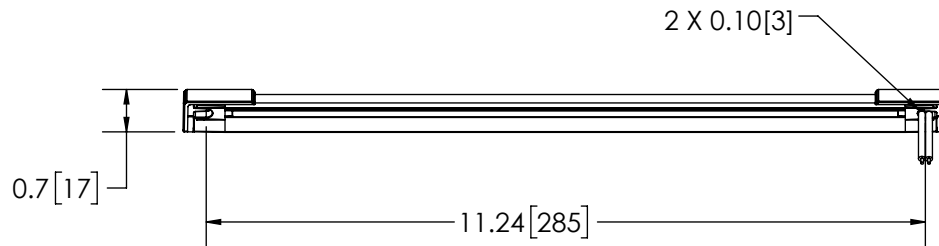


2-18 AWG WIRES  
 RED - POSITIVE (+)  
 BLACK - NEGATIVE (-)

### SPECIFICATIONS

1. CERTIFICATIONS: ECE R10; IP67  
 Note: Unique components, accessories, and hardware kits are not typically included in the Product Certification Test Protocols. Unless otherwise Specified, the Product Certifications referred to herein are predicated upon the base product model configuration.
2. RAW LUMENS: 200 lumens
3. EFFECTIVE LUMENS: 200 lumens
4. ILLUMINANCE: lux
5. PEAK BEAM INTENSITY: Candela
6. EFFICACY: 0.69 lm/W
7. CORRELATED COLOR TEMPERATURE: 4857K
8. VOLTAGE (NOMINAL): 12-24 VDC
9. VOLTAGE (EXTREME): 10-30 VDC
10. CURRENT (PEAK): 0.21A (@ 12 VDC NOMINAL)
11. POWER (MAXIMUM): 2.9W (@ 12 VDC NOMINAL)
12. TEMPERATURE RANGE: -22°F (-30°C) TO 122°F (50°C)
13. CONNECTION: 2 LEAD WIRES
14. MOUNTING: 2 BOLT
15. HOUSING MATERIAL: ALUMINUM
16. LENS MATERIAL: POLYCARBONATE
17. PRODUCT WEIGHT: 0.27 LBS (0.12 Kg)



MOUNTING DISCLAIMER:  
 MOUNTING MEASUREMENT IS FOR REFERENCE ONLY. MEASURE BEFORE DRILLING.

DISCLAIMER  
 DIMENSIONS, ILLUSTRATIONS, SPECIFICATIONS AND CERTIFICATIONS CONTAINED IN THIS DOCUMENT ARE TYPICAL OF THE ACTUAL PRODUCT AND ARE SUBJECT TO CHANGE. ECCO ENGINEERING DOES NOT MAINTAIN FORMAL DESIGN CONTROL OF THIS PRODUCT.

- NOTES:
1. ROHS COMPLIANT
  2. FOR INTERIOR USE ONLY
  3. DIMENSIONS IN INCHES [MILLIMETERS (FOR REFERENCE)]

SCALE 1:3		APPROVALS	DATE
CAD GENERATED DRAWING DO NOT MANUALLY UPDATE. MODEL REFERENCED: A		DRAWN BY	2017-11-16
		CHECKED MDH	2017-11-17
TOLERANCES ARE IN INCHES, AND MILLIMETERS TOLERANCES UNLESS OTHERWISE STATED ARE:		MECH. ENG.	
INCHES DECIMALS	INCHES DECIMALS	ELEC. ENG.	
XX ± 1.0mm XX.X ± 0.5mm	X.X ± 0.1 X.XX ± 0.04 X.XXX ± 0.02	TEST ENG.	
	ANGLES ± 0.5°	SALES	
	FRACTIONS ± 1/64		
THIRD ANGLE PROJECTION		ECCO	
		CORNER INTERIOR LIGHT, 11.9", 12LED, 12-24V	
		CUSTOMER PART NO. EW0800	
SIZE: A		DWG. NO. EW0800	REV. B
Electronically Controlled Use Latest Copy		Project: EL0064	Date Created: 2017-02-09