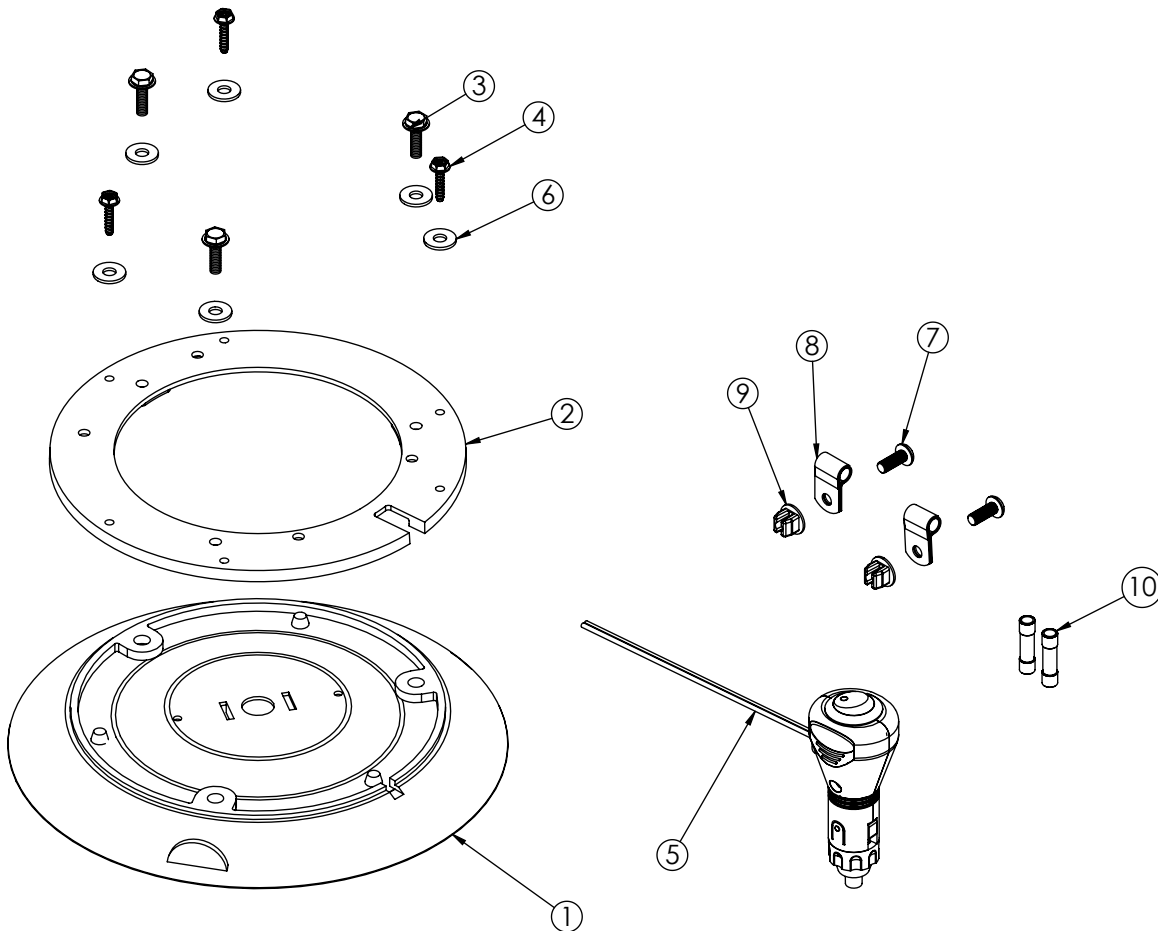


| REVISION HISTORY |                              |            |
|------------------|------------------------------|------------|
| REV.             | DESCRIPTION                  | DATE       |
| C                | UPDATED SCREWS PER P3# 08025 | 2009-03-12 |
| D                | UPDATED WASHERS PER CR# 2860 | 2009-05-20 |
| E                | REVISE PER EC3451            | 2013-04-17 |



| ITEM NO. | QTY. | DESCRIPTION                                 | COMMENTS  |
|----------|------|---------------------------------------------|-----------|
| 1        | 1    | ASSY, MAGNET PLATE & COVER, RUBBER          |           |
| 2        | 1    | ADAPTER, STROBE, VACUUM/MAGNET MOUNT        |           |
| 3        | 3    | SCREW, TAPTITE II, HEX/WASHER, 8-32 X 1/2   |           |
| 4        | 3    | SCREW, PLASTITE, HEX/WASHER, #8 X 5/8" S.Z. |           |
| 5        | 1    | ASSY, CABLE, 2COND, 15', PLUG W/LED SWITCH  |           |
| 6        | 6    | WASHER, #10 FLAT                            |           |
| 7        | 2    | SCREW, 10-32 X 1 1/2 PHIL PAN               |           |
| 8        | 2    | CLAMP, 3/16" STEEL W INSUL CABLE            |           |
| 9        | 2    | INSERT, BASE INT. MT 60SGN011400            |           |
| 10       | 2    | TERMINAL, 14-16 GA BUTT SPLICE              |           |
| 11       | 1    | LABEL, WARNING, VACUUM MOUNT                | NOT SHOWN |
| 12       | 1    | LABEL, WARNING, STROBE                      | NOT SHOWN |
| 13       | 1    | SHEET, INSTRUCTION, VACUUM MOUNT KIT        | NOT SHOWN |
| 14       | 1    | BOX, CORRUGATED, PLAIN, 5700, 360*          | NOT SHOWN |
| 15       | 1    | BAG, RECLOSABLE 3 X 5 X 2 MIL               | NOT SHOWN |

|                                                                         |                                                             |                                         |                              |
|-------------------------------------------------------------------------|-------------------------------------------------------------|-----------------------------------------|------------------------------|
| SCALE 1:3                                                               |                                                             | APPROVALS                               | DATE                         |
| CAD GENERATED DRAWING<br>DO NOT MANUALLY UPDATE.<br>MODEL REFERENCED: E |                                                             | DRAWN BY: BND                           | 2013-04-09                   |
|                                                                         |                                                             | CHECKED: MDH                            | 2013-04-10                   |
| TOLERANCES ARE IN INCHES, AND MILLIMETERS<br>TOLERANCES ARE:            |                                                             | MECH. ENG.: JLA                         | 2013-04-09                   |
|                                                                         |                                                             | ELEC. ENG.: TJT                         | 2013-04-09                   |
| MILLIMETERS DECIMALS<br>XX ± 1.0mm<br>XX.X ± 0.5mm                      | INCHES DECIMALS<br>X.X ± 0.1<br>X.XX ± 0.04<br>X.XXX ± 0.02 | ANGLES<br>± 0.5°<br>FRACTIONS<br>± 1/64 | TEST ENG.: JRT<br>2013-04-10 |
|                                                                         |                                                             | SALES: GLB                              | 2013-04-17                   |



**ACCESSORY VACUUM MOUNT KIT, 6600**

|                                      |                                     |
|--------------------------------------|-------------------------------------|
| CUSTOMER PART NO.<br><b>A6000VMK</b> | PRODUCT SERIES:<br><b>ACCESSORY</b> |
|--------------------------------------|-------------------------------------|

|                                           |                   |                          |
|-------------------------------------------|-------------------|--------------------------|
| SIZE: A                                   | DWG. NO. A6000VMK | REV. E                   |
| SHEET 1 OF 1                              |                   | Project: CR#1471         |
| Electronically Controlled Use Latest Copy |                   | Date Created: 2005-03-18 |

NON DISCLOSURE AGREEMENT  
THIS DRAWING AND THE DESIGN IT DISCLOSES ARE THE PRIVATE PROPERTY OF ECCO AND IS ISSUED IN CONFIDENCE FOR ENGINEERING INFORMATION ONLY. THE DRAWING AND / OR DESIGN MAY NOT BE USED, COPIED, REPRODUCED, OR OTHERWISE DISCLOSED IN PART OR AS A WHOLE TO OUTSIDERS OR USED FOR ANY OTHER PURPOSE WITHOUT THE PRIOR WRITTEN CONSENT OF ECCO. THE DRAWING IS SUBJECT TO RECALL AT ANY TIME. YOUR POSSESSION OF THIS DOCUMENT CONSTITUTES ACCEPTANCE OF THESE TERMS. © 2005 ECCO

