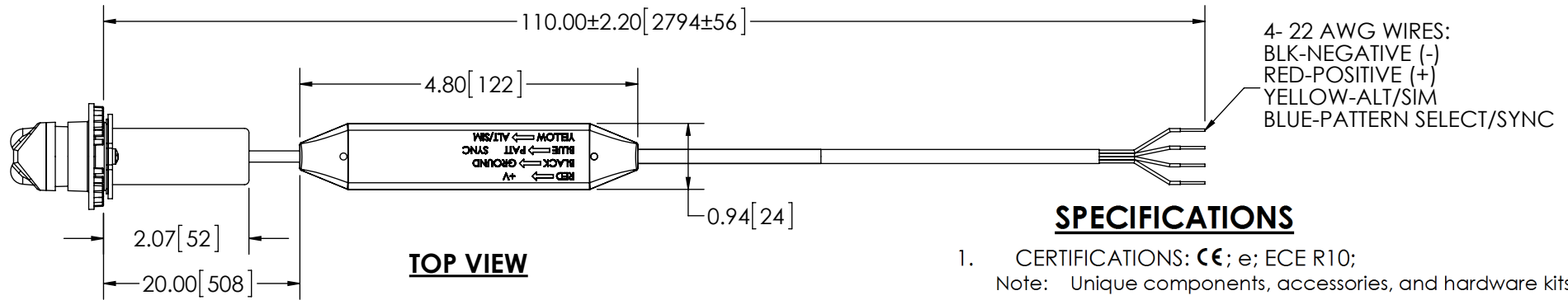


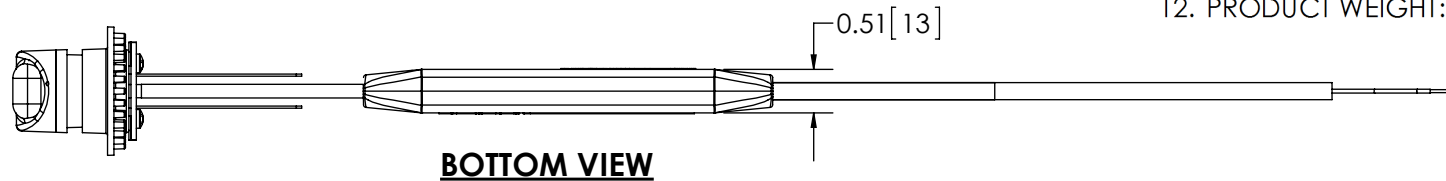
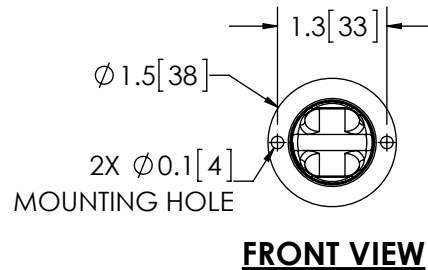
REVISION HISTORY		
REV.	DESCRIPTION	DATE
02	REVISED PER P11052	2012-11-02
03	REVISED PER P11052	2012-11-19
A	INITIAL RELEASE PER P11052	2014-11-10




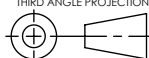
## SPECIFICATIONS

- CERTIFICATIONS: **CE**; e; ECE R10;  
Note: Unique components, accessories, and hardware kits are not typically included in the Product Certification Test Protocols. Unless otherwise Specified, the Product Certifications referred to herein are predicated upon the base product model configuration.
- FLASH MODE: QUAD : 75 ± 5 FLASHES PER MINUTE  
DOUBLE : 75 ± 5 FLASHES PER MINUTE  
TRIPLE : 92 ± 5 FLASHES PER MINUTE
- VOLTAGE (NOMINAL): 12 to 24 VDC
- VOLTAGE (EXTREME): 10 to 30 VDC
- CURRENT (PEAK): 1.25A (@ 12 VDC NOMINAL)
- POWER (MAXIMUM): 16.0W (@ 12 VDC NOMINAL)
- TEMPERATURE RANGE: -22°F (-30°C) TO 122°F (50°C)
- CONNECTION: 9 Foot (2.74 Meters) 4 X 22 AWG Conductor Cable with Black Outer Jacket
- MOUNTING: 1 IN. THRU HOLE
- BASE MATERIAL: ZINC, NICKEL PLATED
- LENS MATERIAL: POLYCARBONATE, UV STABILIZED
- PRODUCT WEIGHT: 0.6 LBS (0.27 Kg)

COLOR CHART	
FGS P/N	COLOR
9013A	AMBER
9013AC	AMB/CLR
9013B	BLUE
9013BR	BLUE/RED
9013C	CLEAR
9013R	RED



NOTES:  
1. DIMENSIONS IN INCHES [MILLIMETERS (FOR REFERENCE)]

SCALE 1:2.25		APPROVALS	DATE		
CAD GENERATED DRAWING DO NOT MANUALLY UPDATE. MODEL REFERENCED: A		DRAWN BY: SNS	2012-11-19		
		CHECKED: BND	2012-11-20		
TOLERANCES ARE IN INCHES, AND MILLIMETERS TOLERANCES ARE:		MECH. ENG.: JLA	2012-11-19		
		ELEC. ENG.: TJT	2012-11-20		
TEST ENG.: JRT		2012-11-26		<b>LED FLASHER, HIDE-A-LED, 10-30 VDC</b> CUSTOMER PART NO. <b>SEE CHART</b>	
SALES: GLB		2012-11-20			PRODUCT SERIES: <b>9013</b>
MILLIMETERS DECIMALS XX. ± 1.0mm XX.X ± 0.5mm		INCHES DECIMALS X.X ± 0.1 X.XX ± 0.04 X.XXX ± 0.02		ANGLS ± 0.5° FRACTIONS ± 1/64	
THIRD ANGLE PROJECTION 		SIZE: A DWG. NO. 9013X SHEET 1 OF 1		REV. A Date Created: 2012-09-18	
NON DISCLOSURE AGREEMENT <small>THIS DRAWING AND THE DESIGN IT DISCLOSES ARE THE PRIVATE PROPERTY OF ECCO AND IS ISSUED IN CONFIDENCE FOR ENGINEERING INFORMATION ONLY. THE DRAWING AND / OR DESIGN MAY NOT BE USED, COPIED, REPRODUCED, OR OTHERWISE DISCLOSED IN PART OR AS A WHOLE TO OUTSIDERS OR USED FOR ANY OTHER PURPOSE WITHOUT THE PRIOR WRITTEN CONSENT OF ECCO. THE DRAWING IS SUBJECT TO RECALL AT ANY TIME. YOUR POSSESSION OF THIS DOCUMENT CONSTITUTES ACCEPTANCE OF THESE TERMS. © 2012 ECCO</small>		Electronically Controlled Use Latest Copy		Project: P11052 Date Created: 2012-09-18	