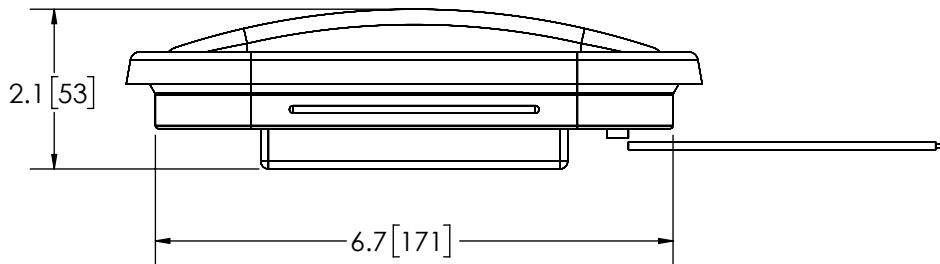
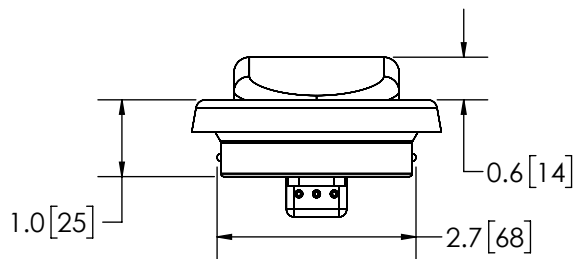


**TOP VIEW**



**FRONT VIEW**



**RIGHT VIEW**

REVISION HISTORY		
REV.	DESCRIPTION	DATE
A	INITIAL RELEASE PER LM14263	2017-03-01
B	REVISE PER LM14263	2017-12-14
C	REVISED PER EC5483	2019-06-25

3-18 AWG WIRES STRIPPED AND TINNED  
 RED - POSITIVE(+)  
 BLACK - NEGATIVE(-)  
 WHITE - MOMENTARY TO (-) FOR PATTERN SELECT/  
 PERMANENT TO (-) WITH REMOTE FLASHER

**SPECIFICATIONS**

- CERTIFICATIONS: IP67  
 Note: Unique components, accessories, and hardware kits are not typically included in the Product Certification Test Protocols. Unless otherwise Specified, the Product Certifications referred to herein are predicated upon the base product model configuration.
- FLASH MODE: SINGLE : 115 ± 5 FLASHES PER MINUTE  
 SINGLE : 230 ± 5 FLASHES PER MINUTE  
 DOUBLE : 155 ± 5 FLASHES PER MINUTE
- VOLTAGE (NOMINAL): 12-24 VDC
- VOLTAGE (EXTREME): 10-30 VDC
- CURRENT (PEAK): 0.14A (@ 12 VDC NOMINAL)
- POWER (MAXIMUM): 1.7W (@ 12 VDC NOMINAL)
- TEMPERATURE RANGE: -40°F (-40°C) TO 158°F (70°C)
- CONNECTION: 3-18 AWG WIRES
- MOUNTING: GROMMET
- BASE MATERIAL: ABS
- LENS MATERIAL: POLYCARBONATE
- PRODUCT WEIGHT: 0.46 LBS (0.21 Kg)

**MOUNTING DISCLAIMER**

MOUNTING MEASUREMENT IS FOR REFERENCE ONLY. MEASURE BEFORE DRILLING.

**DISCLAIMER**

DIMENSIONS, ILLUSTRATIONS, SPECIFICATIONS, AND CERTIFICATIONS CONTAINED IN THIS DOCUMENT ARE TYPICAL OF THE ACTUAL PRODUCT AND ARE SUBJECT TO CHANGE. ECCO ENGINEERING DOES NOT MAINTAIN FORMAL DESIGN CONTROL OF THIS PRODUCT.

**COLOR CHART**

FGS. NO.	LEDS	LENS
3965AB	AMBER/BLUE	CLEAR
3965AC	AMBER/CLEAR	CLEAR
3965AG	AMBER/GREEN	CLEAR

**NOTES:**

- DIMENSIONS IN INCHES[MILLIMETERS (FOR REFERENCE)]

PROPRIETARY AND CONFIDENTIAL INFORMATION

THIS DRAWING AND THE DESIGN AND OTHER INFORMATION DISCLOSED HEREIN ARE THE PROPERTY OF ELECTRONIC CONTROLS COMPANY AND/OR ITS ECCO SAFETY GROUP AFFILIATES ("ECCO") AND IS ISSUED IN CONFIDENCE TO RECIPIENT FOR ENGINEERING INFORMATION PURPOSES ONLY. THIS DRAWING AND THE DESIGN AND OTHER INFORMATION DISCLOSED HEREIN MAY NOT BE USED, COPIED, REPRODUCED OR OTHERWISE DISCLOSED IN PART OR IN WHOLE TO THIRD PARTIES OR USED FOR ANY OTHER PURPOSE WITHOUT PRIOR ECCO WRITTEN CONSENT. ECCO RESERVES ALL PATENT, COPYRIGHT, TRADEMARK AND OTHER PROPRIETARY RIGHTS TO THIS DOCUMENT, INCLUDING ALL DESIGN, MANUFACTURING, REPRODUCTION, USE AND SALES RIGHTS THERETO. THIS DRAWING IS SUBJECT TO RECALL BY ECCO AT ANY TIME, AND YOUR POSSESSION AND/OR USE CONSTITUTES ACCEPTANCE OF THESE TERMS. ©2016 ELECTRONIC CONTROLS COMPANY

SCALE 1:2.5		APPROVALS	DATE	
CAD GENERATED DRAWING DO NOT MANUALLY UPDATE. MODEL REFERENCED: A		DRAWN BY ABD	2019-06-20	
TOLERANCES ARE IN INCHES, AND MILLIMETERS TOLERANCES UNLESS OTHERWISE STATED ARE:		CHECKED MDH	2019-06-24	
MILLIMETERS DECIMALS XX. ± 1.0mm XX.X ± 0.5mm		MECH. ENG. NMT	2019-06-20	
INCHES DECIMALS X.X ± 0.1 X.XX ± 0.04 X.XXX ± 0.02		ELEC. ENG. SPO	2019-06-25	<b>LEDFLASHER, OVAL, 12-24VDC</b>
ANGLES ± 0.5°		TEST ENG. JRT	2019-06-24	
FRACTIONS ± 1/64		SALES. MD	2019-06-24	
THIRD ANGLE PROJECTION		CUSTOMER PART NO. <b>SEE CHART</b>		PRODUCT SERIES:
		SIZE: A	DWG. NO. 3965XX	REV. C
Electronically Controlled Use Latest Copy		SHEET 1 OF 1	Project: LM14263	Date Created: 2016-09-07