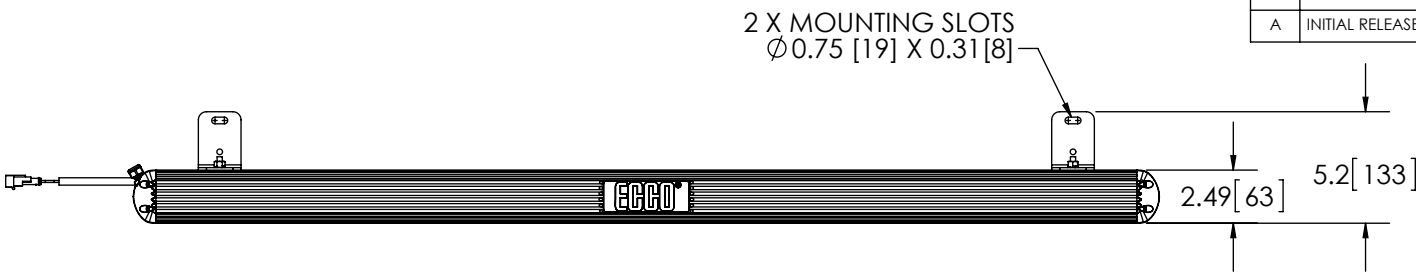
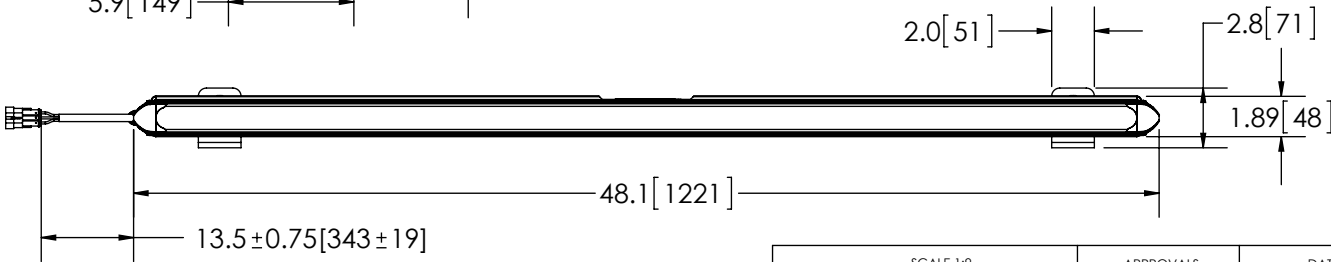
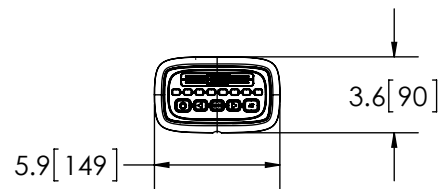
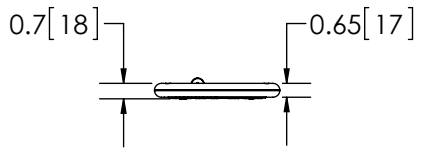


REVISION HISTORY		
REV.	DESCRIPTION	DATE
05	REVISED PER P10002	2012-11-26
06	REVISED PER P10002	2013-02-13
A	INITIAL RELEASE PER P10002	2013-02-25



SPECIFICATIONS

- CERTIFICATIONS: **CE**; e; ECE R10; SAE J595 CLASS 1 YELLOW (AMBER);
 Note: Unique components, accessories, and hardware kits are not typically included in the Product Certification Test Protocols. Unless otherwise Specified, the Product Certifications referred to herein are predicated upon the base product model configuration.
- FLASH MODE: ALTERNATING SINGLE : 115 ± 5 FLASHES PER MIN
- VOLTAGE (NOMINAL): 12 VDC
- VOLTAGE (EXTREME): 9.0 to 16.0 VDC
- CURRENT (PEAK): 1.6A (@ 12 VDC NOMINAL)
- POWER (MAXIMUM): 20.1W (@ 12 VDC NOMINAL)
- TEMPERATURE RANGE: -22°F (-30°C) TO 122°F (50°C)
- CONNECTION: 15' CABLE
- MOUNTING: MOUNTING KIT PROVIDED
- BASE MATERIAL: ALUMINUM
- LENS MATERIAL: POLYCARBONATE
- PRODUCT WEIGHT: 8.1 LBS (3.65 Kg)



NOTES:
 1. SAFETY DIRECTOR CONTROLLER WIRE NOT SHOWN FOR CLARITY, WIRE DIMENSION IS $37.00 \pm 1.00 [940 \pm 25]$
 2. DIMENSIONS IN INCHES [MILLIMETERS (FOR REFERENCE)]

SCALE 1:9		APPROVALS	DATE
CAD GENERATED DRAWING DO NOT MANUALLY UPDATE. MODEL REFERENCED: A		DRAWN BY BND	2013-02-13
		CHECKED MDH	2013-02-14
TOLERANCES ARE IN INCHES, AND MILLIMETERS TOLERANCES ARE:		MECH. ENG.	
MILLIMETERS DECIMALS XX. ± 1.0mm XX.X ± 0.5mm	INCHES DECIMALS X.X ± 0.1 X.XX ± 0.04 X.XXX ± 0.02	ANGLES ± 0.5° FRACTIONS ± 1/64	ELEC. ENG. TJT 2013-02-13
		TEST ENG. JRT	2013-02-14
		SALES. GLB	2013-02-19

ECCO		SAFETY DIRECTOR, 15' SYSTEM, 12V AMBER	
		CUSTOMER PART NO. 3410A	PRODUCT SERIES: 3400
SIZE: A	DWG. NO.	3410A	
Electronically Controlled Use Latest Copy		SHEET 1 OF 1	Project: P10002 Date Created: 2012-09-18

NON DISCLOSURE AGREEMENT
 THIS DRAWING AND THE DESIGN IT DISCLOSES ARE THE PRIVATE PROPERTY OF ECCO AND IS ISSUED IN CONFIDENCE FOR ENGINEERING INFORMATION ONLY. THE DRAWING AND / OR DESIGN MAY NOT BE USED, COPIED, REPRODUCED, OR OTHERWISE DISCLOSED IN PART OR AS A WHOLE TO OUTSIDERS OR USED FOR ANY OTHER PURPOSE WITHOUT THE PRIOR WRITTEN CONSENT OF ECCO. THE DRAWING IS SUBJECT TO RECALL AT ANY TIME. YOUR POSSESSION OF THIS DOCUMENT CONSTITUTES ACCEPTANCE OF THESE TERMS. © 2012 ECCO

