

NEW!

EARL'S PRO LITE ULTRA™ HOSE IS ONE OF THE LIGHTEST AND MOST DURABLE HOSES AVAILABLE ON THE MARKET TODAY!



SIZE TYPICAL APPLICATION

4	Small Oil & Fuel Lines, Pressure Gauges, Vacuum Lines
6	Carburetor, Fuel & Oil Lines
8	Water, Fuel & Oil Lines
10	Oil & Fuel Lines, Heater Hoses
12	Water, Fuel & Oil Lines, Heater Hoses
16	Water, Dry Sump & Fuel Lines, Heater Hoses
20	Fuel, Water & Radiator Lines

The success of our Pro-Lite 350 hose in the market place has prompted us to take this break through hose to another level. Introducing Pro-Lite Ultra™ from Earl's! Constructed in the USA, Pro-Lite Ultra consists of an inner tube of oil resistant "PKR" synthetic rubber. A partial coverage wire inner braid and an oil, weather and abrasion resistant, black, entangled filament nylon fiber cover. This added stainless braid under the cover and over the liner, adds additional hoop strength for higher pressure ratings - 500 PSI working - and added strength for tight radius applications. It also adds needed strength for high suction and vacuum conditions (27Hg). Temperature range is -40°F to 302°F so it can take the most demanding conditions and still deliver you to the winners circle.

Pro-Lite Ultra is designed to use Earl's Swivel Seal, Auto-Fit and Auto Crimp hose ends. The use of other manufacturers hose ends is not recommended and may compromise the pressure capabilities and durability of the hose.

Hose Size AN	Hose I.D. (in)	Hose O.D. (mm)	Max. Op. Press. (PSI)	Max. Op. Press. (Bar)	Min. Bend Radius (in)	Min. Bend Radius (mm)	Max Vacuum (inHg)	Max Vacuum (kPa)	Bulk P/N	3ft./0.9M P/N	6ft./1.8M P/N	10ft./3.0M P/N	20ft./6.1 P/N	33ft./10.1 P/N		
-4	0.22	5.59	0.44	11.18	500	34.47	2.0	50.8	27	91.43	390004ERL	390304ERL	390604ERL	391004ERL	392004ERL	393304ERL
-6	0.35	8.89	0.55	13.97	500	34.47	2.25	57.15	27	91.43	390006ERL	390306ERL	390606ERL	391006ERL	392006ERL	393306ERL
-8	0.44	11.18	0.65	16.51	500	34.47	3.5	88.9	27	91.43	390008ERL	390308ERL	390608ERL	391008ERL	392008ERL	393308ERL
-10	0.57	14.48	0.8	20.32	500	34.47	4.0	101.6	27	91.43	390010ERL	390310ERL	390610ERL	391010ERL	392010ERL	393310ERL
-12	0.69	17.53	0.94	23.88	500	34.47	4.5	114.3	27	91.43	390012ERL	390312ERL	390612ERL	391012ERL	392012ERL	393312ERL
-16	0.88	22.35	1.16	29.46	500	34.47	5.5	139.7	22	74.50	390016ERL	390316ERL	390616ERL	391016ERL	392016ERL	393316ERL
-20	1.12	28.45	1.44	36.58	300	20.68	8.0	203.2	22	74.50	390020ERL	390320ERL	390620ERL	391020ERL	392020ERL	393320ERL



In recent years various fuel manufacturers may have added any number of new unpublished additives to their blends. It is therefore very difficult to know how the tube compound used in the inner liner of our Pro-Lite Ultra™ or any other brand of elastomeric hose will react with a specific fuel. Because of the unknowns described above, we are unable to guarantee that the below listed hoses are the best possible products to use with any specific fuel. If in doubt use PTFE lined hose. Pro-Lite Ultra™ hose is not to be used with brake fluid.

The Inner Liner constructed from oil resistant "PKR" synthetic rubber tube, clean and fast flowing, provides constant flow at operating temperatures from -40° to +302° F.



Partial coverage stainless inner braid is embedded outside inner liner and does not interfere with Swivel-Seal cutter.

Full Coverage Outer Braid of oil, weather and abrasion resistant Nylon bonded to the hose liner provides 500 PSI maximum pressure capabilities, while maintaining the durability and flexibility that makes Pro-Lite Ultra™ series one of the lightest and most durable hoses available.

EARL'S PRO LITE 350™ HOSE IS ONE OF THE LIGHTEST AND MOST DURABLE HOSES AVAILABLE ON THE MARKET TODAY!



SIZE	TYPICAL APPLICATION
4	Small Oil & Fuel Lines, Pressure Gauges, Vacuum Lines
6	Carburetor, Fuel & Oil Lines
8	Water, Fuel & Oil Lines
10	Oil & Fuel Lines, Heater Hoses
12	Water, Fuel & Oil Lines, Heater Hoses
16	Water, Dry Sump & Fuel Lines, Heater Hoses
20	Fuel, Water & Radiator Lines

Serious racers and street performers can benefit from the light weight, durability and temperature characteristics of our Pro Lite 350™ hose. With a maximum pressure rating of 350 psi and an operating temperature range of -40° F to +300° F, the Pro Lite 350™ hose can take the most demanding conditions and still deliver you to the winners circle. Replacing the existing steel braided oil, fuel and coolant hoses on a typical circle track car can save you as much as 30 lbs!

Constructed in the USA, the Pro Lite 350™ hose has a tough, abrasion resistant Nylon sheathing, bonded to the textile inner braid embedded in the synthetic rubber liner. This gives the hose incredible flexibility while maintaining the ability to withstand high vacuum (27 inches/hg) and hot oil temperatures.

Pro Lite 350™ hose has been specifically designed to use EARL'S Swivel Seal™, Auto-Fit™ and Auto Crimp™ Hose ends exclusively. The use of other manufacturers hose ends is not recommended and may compromise the pressure capabilities and durability of the hose. Insist on the brands you trust, EARL'S Pro Lite 350™ hose and Swivel Seal™, Auto-Fit and Auto Crimp™ hose ends.

Hose Size AN	Hose I.D. (in)	Hose I.D. (mm)	Hose O.D. (in)	Hose O.D. (mm)	Max. Op. Press. (PSI)	Max. Op. Press. (Bar)	Min. Bend Radius (in)	Min. Bend Radius (mm)	Max Vacuum (inHg)	Max Vacuum (kPa)	Bulk P/N	3ft./0.9M P/N	6ft./1.8M P/N	10ft./3.0M P/N	20ft./6.1 P/N	33ft./10.1 P/N
-4	0.22	5.59	0.44	11.18	350	24.13	2.0	50.8	27	91.43	350004ERL	350304ERL	350604ERL	351004ERL	352004ERL	353304ERL
-6	0.35	8.89	0.55	13.97	350	24.13	2.25	57.15	27	91.43	350006ERL	350306ERL	350606ERL	351006ERL	352006ERL	353306ERL
-8	0.44	11.18	0.65	16.51	350	24.13	3.5	88.9	27	91.43	350008ERL	350308ERL	350608ERL	351008ERL	352008ERL	353308ERL
-10	0.57	14.48	0.8	20.32	350	24.13	4.0	101.6	27	91.43	350010ERL	350310ERL	350610ERL	351010ERL	352010ERL	353310ERL
-12	0.69	17.53	0.94	23.88	350	24.13	4.5	114.3	27	91.43	350012ERL	350312ERL	350612ERL	351012ERL	352012ERL	353312ERL
-16	0.88	22.35	1.16	29.46	300	20.68	5.5	139.7	22	74.50	350016ERL	350316ERL	350616ERL	351016ERL	352016ERL	353316ERL
-20	1.12	28.45	1.44	36.58	250	17.23	8.0	203.2			350020ERL	350320ERL	350620ERL	351020ERL	352020ERL	353320ERL



In recent years various fuel manufacturers may have added any number of new unpublished additives to their blends. It is therefore very difficult to know how the tube compound used in the inner liner of our Pro-Lite 350 or any other brand of elastomeric hose will react with a specific fuel. Because of the unknowns described above, we are unable to guarantee that the below listed hoses are the best possible products to use with any specific fuel. If in doubt use PTFE lined hose. Pro-Lite 350™ hose is not to be used with brake fluid.

The Inner Liner constructed from synthetic rubber tube, clean and fast flowing, provides constant flow at operating temperatures from -40° to +300 F.



Partial coverage textile inner braid is embedded outside inner liner.

Full Coverage Outer Braid of Nylon bonded to the hose liner provides 350 PSI maximum pressure capabilities, while maintaining the durability and flexibility that is responsible for the Pro-Lite 350™ hose.

EASIER TO CUT AND WORK WITH!



SIZE TYPICAL APPLICATION

4	Small Oil & Fuel Lines, Pressure Gauges, Vacuum Lines
6	Carburetor, Fuel & Oil Lines
8	Water, Fuel & Oil Lines
10	Oil & Fuel Lines, Heater Hoses
12	Water, Fuel & Oil Lines, Heater Hoses
16	Water, Dry Sump & Fuel Lines, Heater Hoses
20	Fuel, Water & Radiator Lines
24	Water & Radiator Lines

NOTE: Earl's reserves the right to substitute hose of comparable or improved quality.

Earl's PERFORM-O-FLEX™ stainless braid-protected synthetic rubber hose is the premium quality racing hose depended on by the top racing teams of every professional sanctioning body in the world.

PERFORM-O-FLEX™ features an inner liner of synthetic rubber. A partial coverage protective sheath of stainless steel braid is embedded in the liner during manufacturing. The reinforced hose liner is then bonded to a full-coverage outer protective sheath of high tensile stainless steel wire braid. Yet Perform-O-Flex™, with its inner liner, remains flexible at temperatures between -40 and +300 degrees F. Racing Greats have depended on PERFORM-O-FLEX™ hose and SWIVEL-SEAL™ hose ends since 1972. Look for Earl's distinctive marker wire.

Perform-O-Flex™ hose is intended for use with Swivel-Seal™, Auto-Fit™ and Auto-Mate™ hose ends only. No other Earl's hose ends are intended for use with Perform-O-Flex™ hose. The use of other manufacturer's hose ends is not recommended.

If you are going to pay for the best—demand it. Insist on Earl's PERFORM-O-FLEX™ hose and SWIVEL-SEAL™ or AUTO-FIT™ hose ends.

Hose Size AN	Hose I.D.		Hose O.D.		Max. Op. Pressure		Min. Bend Radius		Bulk P/N	3ft./0.9M P/N	6ft./1.8M P/N	10ft./3.0M P/N	20ft./6.1 P/N	33ft./10.1 P/N
	(in)	(mm)	(in)	(mm)	(PSI)*	(Bar)*	(in)	(mm)						
-4	0.22	5.59	0.44	11.18	1500	103.40	2.0	50.8	400040ERL	403004ERL	406004ERL	410004ERL	420004ERL	433004ERL
-6	0.34	8.64	0.55	13.97	1500	103.40	2.25	57.15	400060ERL	403006ERL	406006ERL	410006ERL	420006ERL	433006ERL
-8	0.44	11.18	0.64	16.26	1500	103.40	3.5	88.9	400080ERL	403008ERL	406008ERL	410008ERL	420008ERL	433008ERL
-10	0.56	14.22	0.8	20.32	1250	86.16	4.0	101.6	400100ERL	403010ERL	406010ERL	410010ERL	420010ERL	433010ERL
-12	0.69	17.53	0.94	23.88	1000	68.93	4.5	114.3	400120ERL	403012ERL	406012ERL	410012ERL	420012ERL	433012ERL
-16	0.88	22.35	1.16	29.46	750	51.70	5.5	139.7	400160ERL	403016ERL	406016ERL	410016ERL	420016ERL	433016ERL
-20	1.12	28.45	1.44	36.58	500	34.47	8.0	203.2	400200ERL	403020ERL	406020ERL	410020ERL	420020ERL	
-24	1.38	35.05	1.7	43.18	250	17.23	9.0	228.6	400240ERL	403024ERL	406024ERL	410024ERL	420024ERL	

* When used with Auto-Fit™ or Swivel-Seal™ hose ends.

Partial Coverage Stainless Steel Inner Braid is woven into the inner liner of high-temperature synthetic rubber. The timing of the braiding and the curing of the rubber during construction are the key to achieving the desired flexibility and mechanical bond between the braiding layers. Beware of cheaper hoses that do not have this critical mechanical bond.



The Inner Liner constructed from synthetic rubber tube, clean and fast flowing, provides constant flow at operating temperatures from -40° to +300 F.

Full Coverage Outer Braid of High Tensile Stainless Steel bonded to the hose liner provides maximum pressure capabilities, while maintaining the beauty, and flexibility that is responsible for the popularity of PERFORM-O-FLEX™ hose.



A stainless braided hose at a price competitive with the imports. Earl's AUTO-FLEX™ HTE stainless braid- protected synthetic rubber hose is manufactured to our specifications in the U.S.A.

Earl's AUTO-FLEX™ HTE hose features a recommended temperature range and maximum operating pressure equal to our premium quality Perform-O-Flex hose...at a much better price. A partial coverage textile inner braid is imbedded in the HTE liner during manufacture. The hose is finished with a full coverage stainless steel braid which is bonded to the reinforced HTE liner. Continuous use temperature rating is -40 to + 300 degrees F.

Auto-Flex™ hose is intended for use with Swivel-Seal™, Auto-Fit™ and Auto-Mate™ hose ends only. No other Earl's hose ends are intended for use with Auto-Flex™ hose. The use of other manufacturers hose ends is not recommended.

SIZE TYPICAL APPLICATION

3/4	Small Oil & Fuel Lines, Pressure Gauges, Vacuum Lines
5	Fuel & Vacuum Lines where Hose is Clamped
6	Carburetor, Fuel & Oil Lines
7	Fuel, Vacuum & Oil Lines
8/9	Water, Fuel & Oil Lines
10/11	Oil & Fuel Lines, Heater Hoses
12	Water, Oil Lines & Heater Hoses
14	Water Lines
16	Water, Oil Lines & Heater Hoses
18	Water Lines
28	Water & Radiator Lines
32	Water & Radiator Lines

NOTE: Earl's reserves the right to substitute hose of comparable or improved quality.

FOR USE WITH SWIVEL-SEAL™, AUTO-FIT™ OR AUTO-CRIMP™ HOSE ENDS

Hose Size AN	Hose I.D. (in)	Hose I.D. (mm)	Hose O.D. (in)	Hose O.D. (mm)	Max. Op. Pressure (PSI)*	Max. Op. Pressure (Bar)*	Min. Bend Radius (in)	Min. Bend Radius (mm)	Bulk P/N	3ft./0.9M P/N	6ft./1.8M P/N	10ft./3.0M P/N	20ft./6.1M P/N	33ft./10.1M P/N
-4	0.22	5.59	0.44	11.18	1500	103.40	2.0	50.8	300004ERL	303004ERL	306004ERL	310004ERL	320004ERL	333004ERL
-6	0.34	8.64	0.55	13.97	1500	103.40	2.5	63.5	300006ERL	303006ERL	306006ERL	310006ERL	320006ERL	333006ERL
-8	0.44	11.18	0.64	16.26	1500	103.40	3.5	88.9	300008ERL	303008ERL	306008ERL	310008ERL	320008ERL	333008ERL
-10	0.56	14.22	0.80	20.32	1250	86.16	4.0	101.6	300010ERL	303010ERL	306010ERL	310010ERL	320010ERL	333010ERL
-12	0.69	17.53	0.94	23.88	1000	68.93	4.5	114.3	300012ERL	303012ERL	306012ERL	310012ERL	320012ERL	333012ERL
-16	0.88	22.35	1.16	29.46	750	51.70	5.5	139.7	300016ERL	303016ERL	306016ERL	310016ERL	320016ERL	333016ERL

FOR USE WITH EARL'S ECON-O-FIT™ OR HOSE CLAMPS ONLY - NO HOSE ENDS AVAILABLE

Hose Size AN	Hose I.D. (in)	Hose I.D. (mm)	Hose O.D. (in)	Hose O.D. (mm)	Max. Op. Pressure (PSI)*	Max. Op. Pressure (Bar)*	Min. Bend Radius (in)	Min. Bend Radius (mm)	Bulk P/N	3ft./0.9M P/N	6ft./1.8M P/N	10ft./3.0M P/N	20ft./6.1M P/N	33ft./10.1M P/N
-5	0.25	6.35	0.50	12.70	***	***	2.0	50.8	300005ERL	303005ERL	306005ERL	310005ERL	320005ERL	-
-7	0.38	9.65	0.63	16.00	***	***	3.0	76.2	300007ERL	303007ERL	306007ERL	310007ERL	320007ERL	-
-9	0.50	12.70	0.72	18.29	***	***	3.5	88.9	300009ERL	303009ERL	306009ERL	310009ERL	320009ERL	-
-11	0.63	16.00	0.88	22.35	***	***	4.0	101.6	300011ERL	303011ERL	306011ERL	310011ERL	320011ERL	-
-14	0.75	19.05	1.00	25.40	***	***	5.0	127	300014ERL	303014ERL	306014ERL	310014ERL	320014ERL	-
-18	1.00	25.40	1.31	33.27	***	***	7.0	177.8	300018ERL	303018ERL	306018ERL	310018ERL	320018ERL	-
-28	1.50	38.10	1.84	46.74	***	***	11.0	279.4	300280ERL	303028ERL	306028ERL	310028ERL	320028ERL	-
-32	1.75	44.45	2.13	54.10	***	***	12.5	317.5	300320ERL	303032ERL	306032ERL	310032ERL	320032ERL	-

* When used with Swivel-Seal, Auto-Fit or Auto-Crimp hose ends.
 *** Limiting pressure will be hose clamp



In recent years various fuel manufacturers may have added any number of new unpublished additives to their blends. It is therefore very difficult to know how the tube compound used in the inner liner of our Super-stock, Auto Flex and Perform-O-Flex or any other brand of elastomeric hose will react with a specific fuel. Because of the unknowns described above, we are unable to guarantee that the below listed hoses are the best possible products to use with any specific fuel. If in doubt use PTFE lined hose. Auto-Flex hose is not to be used with brake fluid.

Partial Coverage Textile Inner Braid is woven into the inner liner of Temprel high-temperature synthetic rubber. The timing of the braiding and the curing of the rubber during construction are the key to achieving the desired flexibility and mechanical bond between the braiding layers. Beware of cheaper hoses that do not have this critical mechanical bond.



The Inner Liner constructed from Temprel synthetic rubber tube, clean and fast flowing, provides constant flow at operating temperatures from -40° to +300 F.

Full Coverage Outer Braid of High Tensile Stainless Steel bonded to the hose liner provides maximum pressure capabilities, while maintaining the beauty, and flexibility that is responsible for the popularity of AUTO-FLEX™ hose.

ULTRA-FLEX 650™ HOSE

The packaging envelopes of the modern racing car become tighter each year - leaving less room for auxiliaries such as plumbing. At the same time, it becomes more and more difficult to get the cars down to minimum weight. Earl's Ultra-Flex 650™ hose solves these issues.

Earl's finest and lightest hose combines a woven Kevlar® braid or high tensile grade 304 stainless with internal smooth bore PTFE tubing for increased flow with a convoluted exterior for incredible flexibility. It also has significantly higher flow and pressure ratings than conventional convoluted PTFE hose. Ultra-Flex 650™ Kevlar® is 60% lighter and the 304 stainless is 40% lighter and has an average of 14% larger ID than our (and our competitors) stainless braid-protected synthetic rubber hose. PTFE is inert so Ultra Flex hose has a large range of applications, Fuel including exotics and E-based, Oil, Water and Air as well as a very high vacuum rating - 29Hg.

**STAINLESS
BRAID**

**40%
LIGHTER**

*than our stainless
braid-protected
rubber hose!*

**KEVLAR
BRAID**

**60%
LIGHTER**

*than our stainless
braid-protected
rubber hose!*

ULTRA-FLEX 650™ - KEVLAR® BRAIDED HOSE

Hose Size AN	Hose I.D.		Hose O.D.		Max. Op. Pressure		Min. Bend Radius		Bulk P/N
	(in)	(mm)	(in)	(mm)	(PSI)*	(Bar)*	(in)	(mm)	
-4	.270	6.8	.378	9.6	1320	90	1.52	38	650004ERL
-6	.394	10.0	.512	13.0	1180	80	1.64	50	650006ERL
-8	.536	13.6	.650	16.5	1030	70	2.09	64	650008ERL
-10	.658	16.7	.819	20.8	955	65	3.28	100	650010ERL
-12	.780	19.8	.961	24.4	880	60	3.93	120	650012ERL
-16	1.0039	26.4	1.272	32.3	740	50	4.79	146	650016ERL

Temp. Rating: -94° F to 500° F / -70° C to 260° C

ULTRA-FLEX 650™ - STAINLESS STEEL BRAIDED HOSE

Hose Size AN	Hose I.D.		Hose O.D.		Max. Op. Pressure		Min. Bend Radius		Bulk P/N
	(in)	(mm)	(in)	(mm)	(PSI)*	(Bar)*	(in)	(mm)	
-6	.394	10.0	.512	13.0	1180	80	0.787	20	660006ERL
-8	.536	13.6	.650	16.5	1030	70	1.496	38	660008ERL
-10	.658	16.7	.819	20.8	955	65	1.772	45	660010ERL
-12	.780	19.8	.961	24.4	880	60	1.968	50	660012ERL
-16	1.0039	26.4	1.272	32.3	740	50	2.756	70	660016ERL

Temp. Rating: -94° F to 510° F / -70° C to 265° C

ULTRA-FLEX 650™ HOSE ENDS

Ultra-Flex Hose ends have been developed by Earl's to be used with our Ultra-Flex 650™ hose. The crimp design offers our lightest alternative in plumbing a race engine. **The Mil Spec Type III hard anodizing also is impregnated with AE76** to significantly reduce friction of the fluids running through the line assemblies. The advantages of the smooth bore AE76 hose no longer ends at the hose end, but continues through the entire assembly! Available in sizes for -4 to -16 hose and configurations in straight, 30°, 45° low profile, 45°, 60°, 90° low profile, 90°, 120° 150° & 180°.



PART NO. STRAIGHT	HOSE END SIZE	USE HOSE SIZE	ADAPTER SIZE
670104ERL	4	4	4
670106ERL	6	6	6
670108ERL	8	8	8
670110ERL	10	10	10
670112ERL	12	12	12
670116ERL	16	16	16



PART NO. 90° LOW PROFILE	HOSE END SIZE	USE HOSE SIZE	ADAPTER SIZE
679004ERL	4	4	4
679006ERL	6	6	6
679008ERL	8	8	8
679010ERL	10	10	10
679012ERL	12	12	12
679016ERL	16	16	16



PART NO. 30°	HOSE END SIZE	USE HOSE SIZE	ADAPTER SIZE
673004ERL	4	4	4
673006ERL	6	6	6
673008ERL	8	8	8
673010ERL	10	10	10
673012ERL	12	12	12
673016ERL	16	16	16



PART NO. 90° TUBE	HOSE END SIZE	USE HOSE SIZE	ADAPTER SIZE
679104ERL	4	4	4
679106ERL	6	6	6
679108ERL	8	8	8
679110ERL	10	10	10
679112ERL	12	12	12
679116ERL	16	16	16



PART NO. 45° LOW PROFILE	HOSE END SIZE	USE HOSE SIZE	ADAPTER SIZE
674504ERL	4	4	4
674506ERL	6	6	6
674508ERL	8	8	8
674510ERL	10	10	10
674512ERL	12	12	12
674516ERL	16	16	16



PART NO. 120° TUBE	HOSE END SIZE	USE HOSE SIZE	ADAPTER SIZE
672004ERL	4	4	4
672006ERL	6	6	6
672008ERL	8	8	8
672010ERL	10	10	10
672012ERL	12	12	12
672016ERL	16	16	16



PART NO. 45° TUBE	HOSE END SIZE	USE HOSE SIZE	ADAPTER SIZE
674604ERL	4	4	4
674606ERL	6	6	6
674608ERL	8	8	8
674610ERL	10	10	10
674612ERL	12	12	12
674616ERL	16	16	16



PART NO. 150° TUBE	HOSE END SIZE	USE HOSE SIZE	ADAPTER SIZE
675004ERL	4	4	4
675006ERL	6	6	6
675008ERL	8	8	8
675010ERL	10	10	10
675012ERL	12	12	12
675016ERL	16	16	16



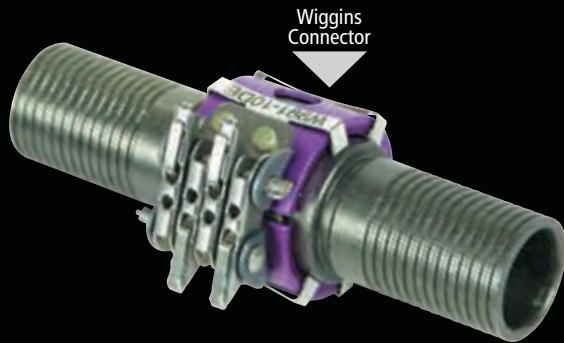
PART NO. 60° TUBE	HOSE END SIZE	USE HOSE SIZE	ADAPTER SIZE
676004ERL	4	4	4
676006ERL	6	6	6
676008ERL	8	8	8
676010ERL	10	10	10
676012ERL	12	12	12
676016ERL	16	16	16



PART NO. 180° TUBE	HOSE END SIZE	USE HOSE SIZE	ADAPTER SIZE
678004ERL	4	4	4
678006ERL	6	6	6
678008ERL	8	8	8
678010ERL	10	10	10
678012ERL	12	12	12
678016ERL	16	16	16

ULTRA-FLEX™ QD HOSE ENDS

Manufactured to be used with Earl's Ultra-Flex 650™ hose, Earl's QD hose ends are made to reduce time, space and weight issues in certain racing situations. These hose ends are threadless and the male and female designs are manufactured for smooth and effortless installations every time. They are coupled by a threadless clamshell closure that is manufactured by the leader in the industry – Adel Wiggins. Earl's QD hose ends are plated with the same Mil-Spec Type III hard anodizing and our exclusive PTFE impregnation for a great reduction in the fluid flow friction. Our male ends also come with plasma coated nitrile o-rings installed for longer life.



PART NO.	DESCRIPTION
W99108ERL	-8 Wiggins Connector
W99110ERL	-10 Wiggins Connector
W99112ERL	-12 Wiggins Connector
W99116ERL	-16 Wiggins Connector

Male



PART NO.	HOSE END SIZE	USE HOSE SIZE	ADAPTER SIZE
670408ERL	8	8	8
670410ERL	10	10	10
670412ERL	12	12	12
670416ERL	16	16	16

Female



PART NO.	HOSE END SIZE	USE HOSE SIZE	ADAPTER SIZE
670508ERL	8	8	8
670510ERL	10	10	10
670512ERL	12	12	12
670516ERL	16	16	16



PART NO.	HOSE END SIZE	USE HOSE SIZE	ADAPTER SIZE
674308ERL	8	8	8
674310ERL	10	10	10
674312ERL	12	12	12
674316ERL	16	16	16



PART NO.	HOSE END SIZE	USE HOSE SIZE	ADAPTER SIZE
674408ERL	8	8	8
674410ERL	10	10	10
674412ERL	12	12	12
674416ERL	16	16	16



PART NO.	HOSE END SIZE	USE HOSE SIZE	ADAPTER SIZE
678808ERL	8	8	8
678810ERL	10	10	10
678812ERL	12	12	12
678816ERL	16	16	16



PART NO.	HOSE END SIZE	USE HOSE SIZE	ADAPTER SIZE
678908ERL	8	8	8
678910ERL	10	10	10
678912ERL	12	12	12
678916ERL	16	16	16

ULTRA-FLEX 650 MALE AN THREAD HOSE ENDS

Earl's Male AN Ultra-Flex hose ends eliminate the need for an adapter so they provide a lower profile where space is limited. The male AN thread swivels for easy installation and seals on a Buna o-ring. The traditional -12 hex size has also been reduced to save weight and both male port side ends have been contoured for increased flow.



Part No.	Description
673810ERL	30° -10 Male AN O-Ring Swivel to -10 UF
673812ERL	30° -12 Male AN O-Ring Swivel to -12 UF



Part No.	Description
674810ERL	45° -10 Male AN O-Ring Swivel to -10 UF
674812ERL	45° -12 Male AN O-Ring Swivel to -12 UF



Part No.	Description
676810ERL	60° -10 Male AN O-Ring Swivel to -10 UF
676812ERL	60° -12 Male AN O-Ring Swivel to -12 UF



Part No.	Description
679810ERL	60° -10 Male AN O-Ring Swivel to -10 UF
679812ERL	60° -12 Male AN O-Ring Swivel to -12 UF

-12 OIL PAN BANJO

This oil pan banjo and bolt has a very low profile to help with ground to pan height issues. It is fully adjustable and is mated to the highest flowing hose on the market today. Parts are all plated in Type III, class 1 hard anodized for toughness and the bolt and banjo are also PTFE impregnated for increased flow. A debris screen can be added as an option for ultimate protection. Banjo, bolt and screen are sold separately.

Part No.	Description
677612ERL	-12 Ultra-Flex Oil Pan Banjo
997612ERL	-12 Ultra-Flex Oil Pan Banjo Bolt Set
230122ERL	997612ERL Banjo Bolt Screen



ULTRA-FLEX™ TOOLS

HAND HELD HOSE CUTTER

Part# D022ERL

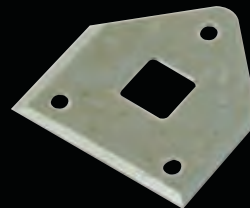
Stop wasting time and material with jagged or angled cuts on your hose assemblies. This hose cutter puts precision accuracy in the palm of your hand. The special v-block ensures a straight clean cut every time. This hand held cutter will cut Earl's Super Stock™, Pro-Lite 350™ and even our Ultra-Flex 650™ Kevlar hose. This tool weighs only 12 oz. and the best part is that the blade is dual functioning. When one edge becomes dull simply rotate the blade and you have a fresh blade ready for hundreds of cuts.



REPLACEMENT HOSE CUTTER BLADE

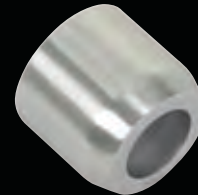
Part# D023ERL

Earl's also carries a 5 blade (10 with rotation) replacement set.



REPLACEMENT CRIMP COLLARS

PART NO.	HOSE END SIZE	PART NO.	HOSE END SIZE
698043ERL	-4	698103ERL	-10
698063ERL	-6	698123ERL	-12
698083ERL	-8	698163ERL	-16



ULTRA-FLEX™ TOOLS

Earl's offers a full line of crimping accessories and an exclusively built mobile crimper for assembling all of our Ultra-Flex 650™ hose and Ultra-Flex™ hose ends. A complete set of dies covering all sizes -4 through -16, die ring, optional air over oil pump for direct air source, and a custom mounting plate are available. The perfect lasting investment for all of your Ultra-Flex assembly needs.

PART #	DESCRIPTION
D032ERL	Ultra-Flex crimping machine
D03200ERL	D032 Mounting Plate
D03201ERL	D032 Crimper Die Ring
D03202ERL	D032 Air over Oil Pump
D03204ERL	-4 Ultra-Flex die set
D03206ERL	-6 Ultra-Flex die set
D03208ERL	-8 Ultra-Flex die set
D03210ERL	-10 Ultra-Flex die set
D03212ERL	-12 Ultra-Flex die set
D03216ERL	-16 Ultra-Flex die set

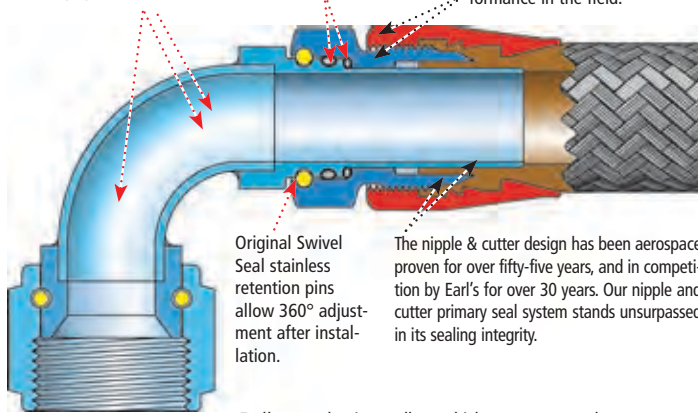
- Crimper has a cast aluminum body that weighs only 42 lbs!
- Manual pump (provided) or optional air over oil pump for direct air source.
- Full cycle time of 20 seconds to 3 minutes depending on what hose end or size of the hose is used.
- 10,000 PSI crimp force on the collar.
- Completely mobile.
- All parts except pumps designed exclusively for Earl's for the Ultra-Flex line.
- Die segments are solid - not hollow



Nobody exceeds the fluid flow capacity that our bent tube hose ends offer.

Earl's Original dual plane anti-seepage sealing system.

Each hose end component is precision machined to exacting tolerances for trouble free performance in the field.



Original Swivel Seal stainless retention pins allow 360° adjustment after installation.

The nipple & cutter design has been aerospace proven for over fifty-five years, and in competition by Earl's for over 30 years. Our nipple and cutter primary seal system stands unsurpassed in its sealing integrity.

Earl's uses aluminum alloys which meet or exceed minimums required for aerospace hose end specifications.

Earl's invented the self-indexing hose end in 1972 and our Swivel-Seal™ brand is still the most reliable and most widely sold adjustable hose end on the market. It is our premium hose end for rubber lined hose. There is no substitute for quality - beware of imitators - ask for Earl's Swivel Seal by name!



SWIVEL-SEAL hose ends are designed to be used with Earl's PERFORM-O-FLEX™, PRO-LITE 350™, PRO-LITE ULTRA™ and AUTO-FLEX™ braid-protected hose. Not intended for use on any other Earl's hose. Use with other manufacturers' hose is not recommended.

PART NO. STRAIGHT	HOSE END SIZE	USE HOSE SIZE	ADAPTER SIZE
800106ERL	6	6	6
800108ERL	8	8	8
800110ERL	10	10	10
800112ERL	12	12	12
800116ERL	16	16	16

STRAIGHT
8001__ERL



PART NO. 30° TUBE	HOSE END SIZE	USE HOSE SIZE	ADAPTER SIZE
803106ERL	6	6	6
803108ERL	8	8	8
803110ERL	10	10	10
803112ERL	12	12	12
803116ERL	16	16	16

30° TUBE
8031__ERL



PART NO. 45° LOW PROFILE	HOSE END SIZE	USE HOSE SIZE	ADAPTER SIZE
804506ERL	6	6	6
804508ERL	8	8	8
804510ERL	10	10	10
804512ERL	12	12	12
804516ERL	16	16	16

45° LOW PROFILE
8045__ERL



PART NO. 45° TUBE	HOSE END SIZE	USE HOSE SIZE	ADAPTER SIZE
804606ERL	6	6	6
804608ERL	8	8	8
804610ERL	10	10	10
804612ERL	12	12	12
804616ERL	16	16	16

45° TUBE
8046__ERL





60° TUBE
8061__ERL

PART NO. 60° TUBE	HOSE END SIZE	USE HOSE SIZE	ADAPTER SIZE
806106ERL	6	6	6
806108ERL	8	8	8
806110ERL	10	10	10
806112ERL	12	12	12
806116ERL	16	16	16



90° LOW PROFILE
8090__ERL

PART NO. 90° LOW PROFILE	HOSE END SIZE	USE HOSE SIZE	ADAPTER SIZE
809006ERL	6	6	6
809008ERL	8	8	8
809010ERL	10	10	10
809012ERL	12	12	12
809016ERL	16	16	16



90° TUBE
8091__ERL

PART NO. 90° TUBE	HOSE END SIZE	USE HOSE SIZE	ADAPTER SIZE
809106ERL	6	6	6
809108ERL	8	8	8
809110ERL	10	10	10
809112ERL	12	12	12
809116ERL	16	16	16



120° TUBE
8120__ERL

PART NO. 120° TUBE	HOSE END SIZE	USE HOSE SIZE	ADAPTER SIZE
812006ERL	6	6	6
812008ERL	8	8	8
812010ERL	10	10	10
812012ERL	12	12	12
812016ERL	16	16	16



150° TUBE
8150__ERL

PART NO. 150° TUBE	HOSE END SIZE	USE HOSE SIZE	ADAPTER SIZE
815006ERL	6	6	6
815008ERL	8	8	8
815010ERL	10	10	10
815012ERL	12	12	12
815016ERL	16	16	16



180° TUBE
8180__ERL

PART NO. 180° TUBE	HOSE END SIZE	USE HOSE SIZE	ADAPTER SIZE
818006ERL	6	6	6
818008ERL	8	8	8
818010ERL	10	10	10
818012ERL	12	12	12
818016ERL	16	16	16

THIS UNIQUE LINE of hose ends has been developed to allow the hose end to be threaded directly into a female port without the bulk and complication of an adapter fitting. In all cases the coupler can be rotated independently of the hose end, this allows the coupler to be threaded into the port while the hose and hose end are held stationary. Both step-up and step-down coupler sizes are available as listed below.



MALE PIPE THREADS

MALE THREAD SIZE	USE HOSE SIZE	STRAIGHT PART NO.	45° PART NO.	90° PART NO.
1/8 NPT	6	820162ERL	824562ERL	829062ERL
1/4 NPT	6	820106ERL	824506ERL	829006ERL
3/8 NPT	6	820166ERL	824566ERL	829066ERL
3/8 NPT	8	820108ERL	824508ERL	829008ERL
1/2 NPT	8	820188ERL	824588ERL	829088ERL
3/8 NPT	10	820111ERL	824511ERL	829011ERL
1/2 NPT	10	820110ERL	824510ERL	829010ERL
1/2 NPT	12	820113ERL	824513ERL	829013ERL
3/4 NPT	12	820112ERL	824512ERL	829012ERL



MALE A.N. THREADS

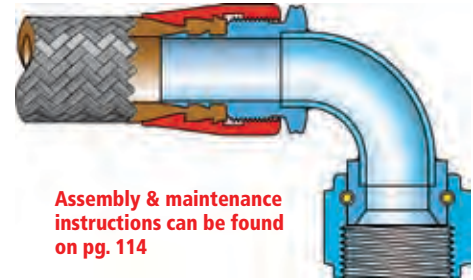
MALE THREAD SIZE (AN)	USE HOSE SIZE	STRAIGHT PART NO. (FLARE / "O" RING)	45° PART NO. ("O" RING ONLY)	90° PART NO. ("O" RING ONLY)
7/16-20 (AN-4)	6	—	844564ERL	849064ERL
1/2-20 (AN-5)	6	—	844565ERL	849065ERL
9/16-18 (AN-6)	6	840106ERL	844506ERL	849006ERL
3/4-16 (AN-8)	6	—	844568ERL	849068ERL
9/16-18 (AN-6)	8	—	844586ERL	849086ERL
3/4-16 (AN-8)	8	840108ERL	844508ERL	849008ERL
7/8-14 (AN-10)	8	—	844581ERL	849081ERL
3/4-16 (AN-8)	10	—	844509ERL	849009ERL
7/8-14 (AN-10)	10	840110ERL	844510ERL	849010ERL
1 1/16-12 (AN-12)	10	—	844511ERL	849011ERL
7/8-14 (AN-10)	12	—	844513ERL	849013ERL
1 1/16-12 (AN-12)	12	840112ERL	844512ERL	849012ERL

Earl's Auto-Fit™ design provides the reliability and appearance of Swivel-Seal™ but are easier to assemble and less expensive.

With the conventional single nipple hose end design used by some of our competitors, the nipple actually threads into the hose and is retained by the socket. The thread forms a part of the seal—and a possible spiral leak path.

The Auto-Fit™ nipple is barbed rather than threaded. In assembly the nipple is pushed into rather than threaded into the hose. The hose is compressed between the nipple and the socket, sealing at the barbs. Hose retention is positive (the same as SWIVEL-SEAL™) and there is no spiral path for possible leaks.

Auto-Fit™ hose ends are available in aluminum and stainless steel. The light-weight aluminum hose ends are suitable for most applications. The stainless units offer maximum corrosion and temperature resistance increased physical strength and are recommended for marine, chemical or high heat use and for exotic fuels.



Assembly & maintenance instructions can be found on pg. 114

Hose end specifications can be found on pg. 130

Replacement sockets can be found on pg. 18

Size	Typical Application
4	Fuel Lines, Fuel and Oil Pressure Gauges
6	Fuel Lines
8	Fuel, Remote Oil I Filter Lines
10	Dry Sump, Remote Oil Filter Lines
12	Dry Sump, Remote Oil Filter Lines
16	Dry Sump & Water Lines
20	Water Lines
24	Water Lines



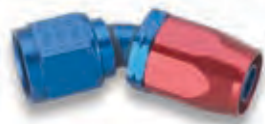
AUTO-FIT hose ends are designed to be used with Earl's PERFORM-O-FLEX™, PRO-LITE 350™, PRO-LITE ULTRA™ and AUTO-FLEX™ braid-protected hose. Not intended for use on any other Earl's hose. Use with other manufacturers' hose is not recommended.

STRAIGHT FITTINGS



HOSE END SIZE	USE HOSE SIZE	ADAPTER SIZE	ALUMINUM	STAINLESS
			PART #	PART #
4	4	4	300104ERL	490104ERL
6	6	6	300106ERL	490106ERL
8	8	8	300108ERL	490108ERL
10	10	10	300110ERL	490110ERL
12	12	12	300112ERL	490112ERL *
16	16	16	300116ERL	490116ERL *
20	20	20	300120ERL	490120ERL *
24	24	24	300124ERL	490124ERL *

45° BENT TUBE FITTINGS



HOSE END SIZE	USE HOSE SIZE	ADAPTER SIZE	ALUMINUM	STAINLESS
			PART #	PART #
4	4	4	304604ERL	494604ERL
6	6	6	304606ERL	494606ERL
8	8	8	304608ERL	494608ERL
10	10	10	304610ERL	494610ERL
12	12	12	304612ERL	494612ERL *
16	16	16	304616ERL	494616ERL *
20	20	20	304620ERL	494620ERL *
24	24	24	304624ERL	494624ERL *

* Available on a Special Order basis only.

90° BENT TUBE FITTINGS



HOSE END SIZE	USE HOSE SIZE	ADAPTER SIZE	ALUMINUM PART #	STAINLESS PART #
4	4	4	309104ERL	499104ERL
6	6	6	309106ERL	499106ERL
8	8	8	309108ERL	499108ERL
10	10	10	309110ERL	499110ERL
12	12	12	309112ERL	499112ERL*
16	16	16	309116ERL	499116ERL*
20	20	20	309120ERL	499120ERL*
24	24	24	309124ERL	499124ERL*

120° BENT TUBE FITTINGS



HOSE END SIZE	USE HOSE SIZE	ADAPTER SIZE	ALUMINUM PART #	STAINLESS PART #
4	4	4	312004ERL	492004ERL
6	6	6	312006ERL	492006ERL
8	8	8	312008ERL	492008ERL
10	10	10	312010ERL	492010ERL
12	12	12	312012ERL	492012ERL*
16	16	16	312016ERL	492016ERL*
20	20	20	312020ERL*	492020ERL*
24	24	24	312024ERL*	492024ERL*

150° BENT TUBE FITTINGS



HOSE END SIZE	USE HOSE SIZE	ADAPTER SIZE	ALUMINUM PART #	STAINLESS PART #
4	4	4	315004ERL	495004ERL
6	6	6	315006ERL	495006ERL
8	8	8	315008ERL	495008ERL
10	10	10	315010ERL	495010ERL
12	12	12	315012ERL	495012ERL*
16	16	16	315016ERL	495016ERL*
20	20	20	315020ERL*	495020ERL*
24	24	24	315024ERL*	495024ERL*

180° BENT TUBE FITTINGS



HOSE END SIZE	USE HOSE SIZE	ADAPTER SIZE	ALUMINUM PART #	STAINLESS PART #
4	4	4	318004ERL	498004ERL
6	6	6	318006ERL	498006ERL
8	8	8	318008ERL	498008ERL
10	10	10	318010ERL	498010ERL
12	12	12	318012ERL	498012ERL*
16	16	16	318016ERL	498016ERL*
20	20	20	318020ERL*	498020ERL*
24	24	24	318024ERL*	498024ERL*

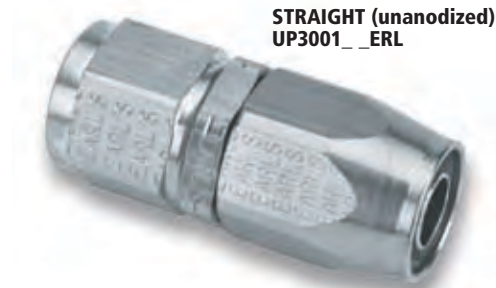
* Available on a Special Order basis only.

Put away the oven and wheel cleaners for good! Earl's "UP" (unanodized - polished) Auto-Fit™ hose ends are tumble polished without anodizing so you can plate them any color you want to complete that custom plumbing system. You could also have them clear coated to keep that natural look of polished aluminum. We have replaced the stainless retaining pin in the female B-nut with an aluminum pin so you do not have to disassemble the nut from the body before plating. "UP" hose ends are the solution to that finishing touch to a custom system.



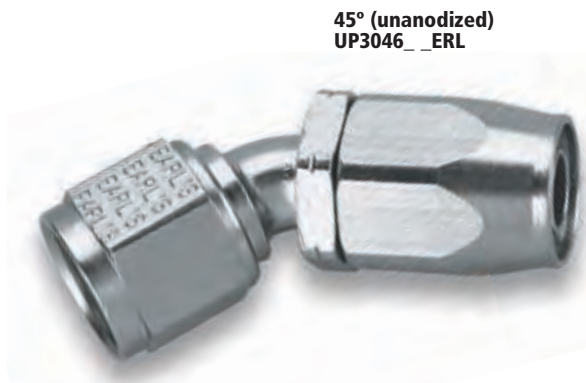
Auto-Fit hose ends are designed to be used with Pro-Lite 350™, Pro-Lite Ultra™, Perform-O-Flex™ & Auto-Flex™ hose. They are not recommended for use with any other manufacturers' hose. Before purchasing a single-nipple hose end that merely "looks good", check the pressure ratings of Auto-Fit™ hose ends when used with Perform-O-Flex™ and Auto-Flex™ hose.

NOTE: Unanodized hose ends must be clear coated or anodized before assembly. Do not use raw/unplated hose ends on any assembly



**STRAIGHT (unanodized)
UP3001_ _ERL**

UNANODIZED PART NO.	HOSE END SIZE	USE HOSE SIZE	ADAPTER SIZE
UP300104ERL	4	4	4
UP300106ERL	6	6	6
UP300108ERL	8	8	8
UP300110ERL	10	10	10
UP300112ERL	12	12	12



**45° (unanodized)
UP3046_ _ERL**

UNANODIZED PART NO.	HOSE END SIZE	USE HOSE SIZE	ADAPTER SIZE
UP304604ERL	4	4	4
UP304606ERL	6	6	6
UP304608ERL	8	8	8
UP304610ERL	10	10	10
UP304612ERL	12	12	12

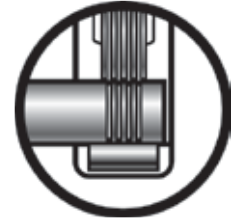


**90° (unanodized)
UP3091_ _ERL**

UNANODIZED PART NO.	HOSE END SIZE	USE HOSE SIZE	ADAPTER SIZE
UP309104ERL	4	4	4
UP309106ERL	6	6	6
UP309108ERL	8	8	8
UP309110ERL	10	10	10
UP309112ERL	12	12	12

TUBE-MATE AUTO-FIT™

IT IS OFTEN NECESSARY to connect a length of rigid metal tubing to a flexible stainless braid protected hose. The only methods available have been either to flare the tubing and use a connection tube nut and sleeve or to weld an adapter fitting to the metal tubing. Earl's TUBE-MATE is a unique fitting designed to connect flexible hoses to low pressure tubing (25 PSI max) without the necessity for welded adapters. **NOTE:** tubing should be flared, beaded or grooved for secure installation.



See page 69 for higher pressure options
Assembly instructions pg. 117

PART #	HOSE SIZE AN	TUBING O.D.		MAX. OPERATING PRESSURE	
		(IN)	(MM)	(PSI)	(BAR)
360104ERL	-4	1/4	6.35	25	1.72
360165ERL	-6	5/16	7.87	25	1.72
360106ERL	-6	3/8	9.65	25	1.72
360108ERL	-8	1/2	12.70	25	1.72
360110ERL	-10	5/8	16.00	25	1.72
360112ERL	-12	3/4	19.05	25	1.72

REPLACEMENT RUBBER BOOTS FOR TUBE-MATE AUTO-FIT™



Part No.	Description
360104BERL	Replacement rubber boot for Tube-Mate #360104ERL
360165BERL	Replacement rubber boot for Tube-Mate #360165ERL
360106BERL	Replacement rubber boot for Tube-Mate #360106ERL
360108BERL	Replacement rubber boot for Tube-Mate #360108ERL
360110BERL	Replacement rubber boot for Tube-Mate #360110ERL
360112BERL	Replacement rubber boot for Tube-Mate #360112ERL

SWIVEL-SEAL™ & AUTO-FIT™ REPLACEMENT SOCKETS

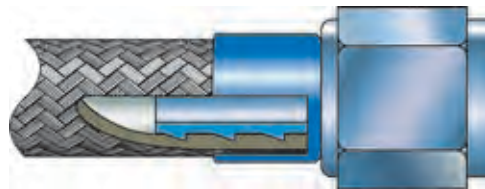
When you need to reuse a hose end and the sockets are damaged or worn, you can now order replacement sockets!



HOSE SIZE	ANODIZED PART #	UNANODIZED PART #
4	898043ERL	UP898043ERL
6	898063ERL	UP898063ERL
8	898083ERL	UP898083ERL
10	898103ERL	UP898103ERL
12	898123ERL	UP898123ERL
16	898163ERL	-
20	898203ERL	-
24	898243ERL	-

The original and still the best barbed aluminum nipple, cover and clamp hose ends. AUTO-MATE is intended for use with either AUTO-FLEX™, PERFORM-O-FLEX™ stainless steel braid protected hose PRO LITE 350™ or PRO-LITE ULTRA™ hoses anywhere that reliable and professional plumbing is required at an economical price.

When combined with Pro-Lite 350™ or Pro-Lite Ultra™ hose. You have an assembly that is half the weight of traditional stainless steel braid and removable hose ends. Earl's offers the crimping sleeves (see below) and a crimping tool to allow field assembly of these attractive, cost effective and lightweight fittings. See page 101 for crimping tool details. Can also be used with Econ-O-Fit™ clamps.



AUTO-MATE™ hose ends are designed for use with stainless steel braid-protected hose & Pro-Lite 350™ & Pro-Lite Ultra™. They cannot be used with Earl's SUPER STOCK™ hose because of their under-sized barbs - not for standard ID rubber hose. Auto-Mate™ needs either Econ-O-Fit™ or crimped Auto-Crimp™ collar to function.

Straight
7001__ERL



PART NO.	HOSE END SIZE	ADAPTER SIZE	HOSE SIZE
700104ERL	4	4	4
700106ERL	6	6	6
700108ERL	8	8	8
700110ERL	10	10	10
700112ERL	12	12	12
700116ERL	16	16	16

45°
7046__ERL



PART NO.	HOSE END SIZE	ADAPTER SIZE	HOSE SIZE
704604ERL	4	4	4
704606ERL	6	6	6
704608ERL	8	8	8
704610ERL	10	10	10
704612ERL	12	12	12
704616ERL	16	16	16

90°
7091__ERL



PART NO.	HOSE END SIZE	ADAPTER SIZE	HOSE SIZE
709104ERL	4	4	4
709106ERL	6	6	6
709108ERL	8	8	8
709110ERL	10	10	10
709112ERL	12	12	12
709116ERL	16	16	16

120°
7120__ERL



PART NO.	HOSE END SIZE	ADAPTER SIZE	HOSE SIZE
712004ERL	4	4	4
712006ERL	6	6	6
712008ERL	8	8	8
712010ERL	10	10	10
712012ERL	12	12	12
712016ERL	16	16	16

180°
7180__ERL



PART NO.	HOSE END SIZE	ADAPTER SIZE	HOSE SIZE
718004ERL	4	4	4
718006ERL	6	6	6
718008ERL	8	8	8
718010ERL	10	10	10
718012ERL	12	12	12
718016ERL	16	16	16

Auto Crimp Collars
798__ERL



PART NO.	HOSE END SIZE	HOSE SIZE
798043ERL	4	4
798063ERL	6	6
798083ERL	8	8
798103ERL	10	10
798123ERL	12	12
798163ERL	16	16

* Collar sold separately

Econ-O-Fit Clamp Housings pg. 96
Ano-Tuff Hose Ends pg. 37



REFORMULATED



Earl's SUPER STOCK™ **REFORMULATED** hose is a high quality synthetic rubber hose reinforced by a full coverage interior braided fabric sheath. This superior replacement hose for original equipment applications has found favor with professional racing teams and street performers alike. **The liner has also been re-formulated making it more tolerant of pump gas additives.** Available in blue or black SUPER STOCK™ is rated at 250 psi and 250° F. continuous service. To prevent collapse in suction service or for very tight bends, we can supply an internal spiral reinforcing wire. Suitable for fuel, oil and water.

Super Stock™ hose is intended for use with Super Stock™ hose ends only. It is also for use with hose nipples and beaded tubing. No other Earl's hose ends are intended for use with Super Stock™ hose.

Hose Size AN	Hose I.D.		Hose O.D.		Max. Op. Pressure		Min. Bend Radius		Bulk P/N	10ft./3.0M P/N	20ft./6.1 P/N	33ft./10.1 P/N
	(in)	(mm)	(in)	(mm)	(PSI)	(Bar)	(in)	(mm)				
Black -4	0.25	6.35	0.47	11.94	250	17.23	2.5	63.5	780004ERL	-	-	-
Blue -4	0.25	6.35	0.47	11.94	250	17.23	2.5	63.5	790004ERL	-	-	-
Black -6	0.38	9.65	0.63	16.00	250	17.23	3	76.2	780006ERL	781006ERL	782006ERL	783306ERL
Blue -6	0.38	9.65	0.63	16.00	250	17.23	3	76.2	790006ERL	791006ERL	792006ERL	793306ERL
Black -8	0.5	12.70	0.75	19.05	250	17.23	5	127	780008ERL	781008ERL	782008ERL	783308ERL
Blue -8	0.5	12.70	0.75	19.05	250	17.23	5	127	790008ERL	791008ERL	792008ERL	793308ERL
Black -10	0.63	16.00	0.94	23.88	250	17.23	6.0	152.4	780010ERL	781010ERL	782010ERL	-
Blue -10	0.63	16.00	0.94	23.88	250	17.23	6.0	152.4	790010ERL	791010ERL	792010ERL	-
Black -12	0.75	19.05	1	25.40	250	17.23	7	177.8	780012ERL	-	-	-
Blue -12	0.75	19.05	1	25.40	250	17.23	7	177.8	790012ERL	-	-	-



In recent years various fuel manufacturers have added any number of new unpublished additives to their blends. It is therefore very difficult to know how the tube compound used in the inner liner of our Super-stock, Auto Flex and Perform-O-Flex or any other brand of elastomeric hose will react with a specific fuel. Because of the unknowns described above, we are unable to guarantee that the above listed hoses are the best possible products to use with any specific fuel. If in doubt use PTFE lined hose. Super Stock hose is not to be used with brake fluid. On applications where the maximum temperature range is expected, compression of the Super Stock collar is required.

INNER SUPPORT SPRING

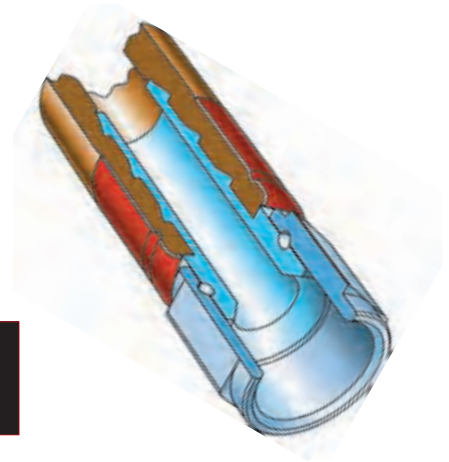
The inner support spring is to be used with Super Stock™ Hose to prevent collapse when in suction service or when very tight bends must be made. It may also be used with other types of hose where it's determined that these conditions may occur.

HOSE NO.	4 FT. LENGTH
10	770410ERL
12	770412ERL



Super Stock™ push-on hose ends are designed to be an attractive and lightweight direct replacement for the popular and economical brass push lock type. Machined from aluminum alloy and anodized in the familiar red and blue made famous by Earl's, they are available in all common AN 37° flare configurations and, as straight hose ends, with male NPT threads.

Designed to be used with our Super Stock™ hose, these hose ends are not intended for use with stainless braid-protected hoses or Pro-Lite 350™ or PTFE lined hose. A great budget hose end for race, marine, street & limited production OEM applications.



Earl's Super Stock hose ends are designed to be used with Earl's SUPER STOCK hose. They cannot be used with stainless steel braid protected or PTFE lined hose. On applications where the maximum temperature range is expected, compression of the Super Stock collar is required.

**Straight
7001__ERL**



SUPER STOCK PART NO.	A.N. FITTING SIZE	HOSE NO.	HOSE SIZE
700145ERL	4	4	1/4
700167ERL	6	6	3/8
700109ERL	8	8	1/2
700111ERL	10	10	5/8
700113ERL	12	12	3/4

**45°
7046__ERL**



704645ERL	4	4	1/4
704667ERL	6	6	3/8
704609ERL	8	8	1/2
704611ERL	10	10	5/8
704613ERL	12	12	3/4

**90°
7091__ERL**



709145ERL	4	4	1/4
709167ERL	6	6	3/8
709109ERL	8	8	1/2
709111ERL	10	10	5/8
709113ERL	12	12	3/4

**120°
7120__ERL**



712045ERL	4	4	1/4
712067ERL	6	6	3/8
712009ERL	8	8	1/2
712011ERL	10	10	5/8
712013ERL	12	12	3/4

*Collar included

**180°
7180__ERL**



SUPER STOCK PART NO.	A.N. FITTING SIZE	HOSE NO.	HOSE SIZE
718045ERL	4	4	1/4
718067ERL	6	6	3/8
718009ERL	8	8	1/2
718011ERL	10	10	5/8
718013ERL	12	12	3/4

**Male Pipe Thread
7201__ERL**



	NPT SIZE		
720142ERL	1/8	4	1/4
720164ERL	1/4	6	3/8
720166ERL	3/8	6	3/8
720186ERL	3/8	8	1/2
720111ERL	1/2	10	5/8
720113ERL	3/4	12	3/4

TYPICAL APPLICATION

Size	Usage
4	Fuel Lines, Fuel and Oil Pressure Gauges
6	Fuel, Remote Oil Filter Lines
8	Dry Sump, Remote Oil Filter Lines
10	Dry Sump, Remote Oil Filter Lines
12	Dry Sump, Remote Oil Filter Lines

SUPER STOCK™ REPLACEMENT SLEEVES

Color: Red

Quantity 1 ea.

Hose Size	-4	-6	-8	-10	-12
Replacement Sleeves	798045ERL	798067ERL	798009ERL	798011ERL	798013ERL





A TRIPLE STEEL AND FABRIC braid-reinforced high pressure hose developed specifically to meet the demands of power steering systems, this flexible hose is also suitable for hydraulic and air lines. Available in size - 6 with a blue fabric outer covering.

The pressure rating shown is only valid when Earl's power steering hose is used with Earl's POWER STEERING hose ends. The use of other manufacturers' hose ends is not recommended.

Hose Size	Hose I.D.		Hose O.D.		Max. Op. Pressure		Burst Pressure		Min. Bend Radius		Bulk P/N	6ft./1.8M P/N	10ft./3.0M P/N	20ft./6.1 P/N
AN	(in)	(mm)	(PSI)	(Bar)	(PSI)	(Bar)	(PSI)	(Bar)	(in)	(mm)				
-6	0.31	7.87	0.68	17.27	2250	155.09	9000	620.37	4	101.6	130006ERL	130606ERL	131006ERL	132006ERL

Due to extreme pressure spikes at the end of steering travel, power steering hose requirements are among the toughest in the industry. These steel hose ends have been developed specifically to meet these requirements.

ASSEMBLY & MAINTENANCE INSTRUCTIONS CAN BE FOUND ON PAGE 116



Earl's POWER STEERING HOSE ENDS are designed to be used only with EARL'S POWER STEERING HOSE. They cannot be used with stainless steel braid-protected hose SUPER STOCK hose™ PRO-LITE 350™ PRO-LITE ULTRA™ hose, SPEED-FLEX™ hose or ULTRA-FLEX 650 hose.



Straight
1301__ERL

45°
1346__ERL

90°
1391__ERL

JIC = 37° flare

PART NO.	HOSE SIZE	DESCRIPTION	THREAD
130106ERL	-6	JIC Str. Fem.	9/16-18

PART NO.	HOSE SIZE	DESCRIPTION	THREAD
134606ERL	-6	JIC 45° Fem.	9/16-18

PART NO.	HOSE SIZE	DESCRIPTION	THREAD
139106ERL	-6	JIC 90° Fem.	9/16-18

HYDRAULIC SYSTEMS

Standard automotive flexible brake hoses are manufactured from synthetic rubber and reinforced with multiple layers of fabric braid. They were designed and developed for use with drum brake systems. When disc brakes were developed for racing cars, line pressure requirements increased considerably. With the larger and heavier cars, like Ford's GT-40s, enough of the available brake pedal travel was used up in expanding the flexible brake hoses so that there was insufficient pedal travel left for safe braking.



In the mid-1960s, Earl's pioneered the use of armored flex hose of extruded PTFE to solve this problem. The stiffness of the PTFE liner combined with the tightly woven high tensile stainless steel outer braid solved the pedal travel problem. By eliminating the line swell it also dramatically increased the firmness and feel of the brake pedal which allowed the drivers to modulate the brakes more efficiently. Improved abrasion resistance and increased temperature capacity are secondary advantages.

Since brake actuation produces high pressure with very little fluid displacement, we recommend -2 & -3 SPEED-FLEX™ for brake systems. Clutch actuation, on the other hand, requires moderate pressure but considerable displacement of fluid. For hydraulic clutch systems we recommend the use of -4 SPEED-FLEX™.

FUEL & LUBRICATION SYSTEMS

In recent years various fuel manufacturers have added any number of new unpublished additives to their blends rendering some of them incompatible with synthetic rubber lined hose. Earl's Speed-Flex™ PTFE lined stainless braided hose is impervious to any automotive fuel blend known to us and may be the best choice for use with modern racing gasolines. All SPEED-FLEX™ hoses are compatible with gasoline, hydrocarbon fuels, alcohols, nitro-methane, mineral and synthetic lubricants, and high density fuel additives. Size 6 and 8 are carbon lined to dissipate static electricity.

Some caution is necessary in the selection of armored PTFE hose. The PTFE liner is manufactured in two wall thicknesses, commercial (.030") and aircraft specification (.040"), Earl's uses the thicker and stronger wall. There are also hoses in the marketplace manufactured in such a manner that the stainless braid is loose on the PTFE liner. These hoses offer good pressure capacity but limited expansion resistance. **Earl's SPEED-FLEX™ hose is the standard of the industry.**

Temp. Rating: -65° F to 450° F / -54° C to 232° C

Hose Size AN	Hose I.D.		Hose O.D.		Max. Op. Press.		Min. Bend Radius		Bulk P/N	10ft./3.0M P/N	20ft./6.1M P/N	33ft./10.1M P/N
	(in)	(mm)	(in)	(mm)	(PSI)*	(Bar)*	(in)	(mm)				
-2	0.08	2.03	0.2	5.08	2000	137.86	1.5	38.1	600002ERL	-	620002ERL	633002ERL
-3	0.13	3.30	0.25	6.35	2000	137.86	1.5	38.1	600003ERL	610003ERL	620003ERL	633003ERL
-3**clear	0.13	3.30	0.29	7.73	2000	137.86	1.5	38.1	6000031ERL	6100031ERL	6200031ERL	6330031ERL
-4	0.19	4.83	0.31	7.874	2000	137.86	1.5	38.1	600004ERL	610004ERL	620004ERL	633004ERL
-6*	0.34	8.64	0.44	11.176	1500	103.40	4	101.6	600006ERL	610006ERL	620006ERL	633006ERL
-8*	0.44	11.176	0.56	14.224	1000	68.93	5	127	600008ERL	610008ERL	620008ERL	633008ERL

* Carbon lined for static dissipation.

** PVC covered

Extruded PTFE



Stainless Steel Braid



When considering the replacement of stock rubber brake hoses with stainless braid-protected hose of **extruded PTFE** you should consider the following facts:

SPEED-SEAL™ hose ends are available in stainless steel, steel and anodized and hard anodized aluminum, in both low profile and bent tube construction and in adjustable and non-adjustable configurations. **For use with SPEED-FLEX™ Smooth Bore PTFE Hose**

-2 AN



		STAINLESS	
HOSE SIZE	NUT SIZE	PART #	
-2	2	6001902ERL	
-2	3	6001923ERL	

		STAINLESS	
HOSE SIZE	NUT SIZE	PART #	
-2	2	6045902ERL	
-2	3	6045923ERL	

		STAINLESS	
HOSE SIZE	NUT SIZE	PART #	
-2	2	6090902ERL	
-2	3	6090923ERL	

STRAIGHT FITTINGS



HOSE SIZE	NUT SIZE	ALUMINUM	STEEL	STAINLESS
		PART #	PART #	PART #
-3	3	600133ERL	600103ERL	600193ERL
-3	4	-	600143ERL	-
-4	4	600134ERL	600104ERL	600194ERL
-6	6	600136ERL	600106ERL	600196ERL
-8	8	600138ERL	-	-

NON-ADJUSTABLE LOW PROFILE 45°



HOSE SIZE	NUT SIZE	STEEL	STAINLESS
		PART #	PART #
-3	3	-	604403ERL
-4	4	-	604404ERL

ADJUSTABLE LOW PROFILE 45°



HOSE SIZE	NUT SIZE	ALUMINUM	STEEL	STAINLESS
		PART #	PART #	PART #
-3	3	604533ERL	604503ERL	604593ERL
-4	4	604534ERL	604504ERL	604594ERL
-6	6	604536ERL	604506ERL	604596ERL
-8	8	604538ERL	-	-

NON-ADJUSTABLE TUBE 45°



HOSE SIZE	NUT SIZE	ALUMINUM	STEEL	STAINLESS
		PART #	PART #	PART #
-3	3	604633ERL	604603ERL	604693ERL
-4	4	604634ERL	604604ERL	604694ERL

**ADJUSTABLE
TUBE 45°**



HOSE SIZE	NUT SIZE	ALUMINUM	STEEL	STAINLESS
		PART #	PART #	PART #
-3	3	604733ERL	604703ERL	604793ERL
-4	4	604734ERL	604704ERL	604794ERL
-6	6	604736ERL	604706ERL	604796ERL
-8	8	604738ERL	-	-

**NON-ADJUSTABLE
LOW PROFILE 90°**



HOSE SIZE	NUT SIZE	STEEL	STAINLESS
		PART #	PART #
-3	3	-	608993ERL
-4	4	-	608994ERL

**ADJUSTABLE LOW
PROFILE 90°**



HOSE SIZE	NUT SIZE	ALUMINUM	STEEL	STAINLESS
		PART #	PART #	PART #
-3	3	609033ERL	609003ERL	609093ERL
-4	4	609034ERL	609004ERL	609094ERL
-6	6	609036ERL	609006ERL	609096ERL
-8	8	609038ERL	-	-

**NON-ADJUSTABLE
TUBE 90°**



HOSE SIZE	NUT SIZE	ALUMINUM	STEEL	STAINLESS
		PART #	PART #	PART #
-3	3	609133ERL	609103ERL	609193ERL
-4	4	609134ERL	609104ERL	609194ERL

**ADJUSTABLE
TUBE 90°**



HOSE SIZE	NUT SIZE	ALUMINUM	STEEL	STAINLESS
		PART #	PART #	PART #
-3	3	609233ERL	609203ERL	609293ERL
-4	4	609234ERL	609204ERL	609294ERL
-6	6	609236ERL	609206ERL	609296ERL
-8	8	609238ERL	-	-

For use with SPEED-FLEX™ Smooth Bore PTFE Hose

**ADJUSTABLE
TUBE 120°**



ALUMINUM



STEEL



STAINLESS

HOSE SIZE	NUT SIZE	PART #	PART #	PART #
-3	3	612133ERL	612103ERL	612193ERL
-4	4	612134ERL	612104ERL	612194ERL
-6	6	612136ERL	612106ERL	612196ERL
-8	8	612138ERL	-	-

**ADJUSTABLE
TUBE 180°**



ALUMINUM



STEEL



STAINLESS

HOSE SIZE	NUT SIZE	PART #	PART #	PART #
-3	3	618133ERL	618103ERL	618193ERL
-4	4	618134ERL	618104ERL	618194ERL
-6	6	618136ERL	618106ERL	618196ERL
-8	8	618138ERL	-	-

ALUMINUM SPEED-SEAL: EARL'S ALUMINUM SPEED-SEAL HOSE ENDS ARE NOT RECOMMENDED FOR USE ON AUTOMOTIVE BRAKE SYSTEMS. AVOIDANCE OF OVER TORQUING IS ESPECIALLY IMPORTANT WITH ALUMINUM SOCKETS.

CONVEX INVERTED FLARE



CONCAVE

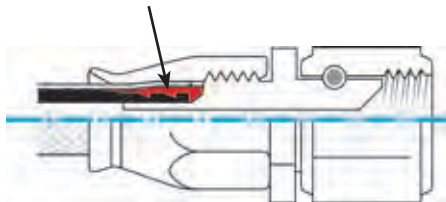


For use with SPEED-FLEX™ Smooth Bore PTFE Hose

	PART NO.	HOSE SIZE	THREAD SIZE
	640103ERL	3	Male 3/8-24 I.F.
	640203ERL	3	-3 AN Male Bulkhead
	640303ERL	3	Male 10mm x1 Convex (IF)
	640403ERL	3	Male 10mm x1.25 Concave
	640503ERL	3	Female 3/8-24 Convex (IF)
	640603ERL	3	Female 10mm x1 Convex (IF)

	NO.	SIZE	THREAD SIZE
	640703ERL	3	Female 10mm x1.25 Convex (IF)
	640803ERL	3	Male 10mm x1 Long Concave
	640903ERL	3	Female 10mm x1 Convex (Honda)
	641003ERL	3	Female 10mm x1 Convex (Toyota)
	641103ERL	3	Female 10mm x1 Concave

REPLACEMENT OLIVES FOR SPEED-SEAL™ SMOOTH BORE PTFE HOSE ENDS



NOTE: Olives for .040 wall hose only



Size	Brass Part No.	Alum. Part No.	Stainless Part No.
-2	699020ERL	—	699029ERL
-3	699030ERL	699033ERL	699039ERL
-4	699040ERL	699043ERL	699049ERL
-6	699060ERL	699063ERL	699069ERL
-8	-	699083ERL	-

BANJOS

STRAIGHT NON-ADJUSTABLE SHORT



HOSE SIZE	BANJO BOLT DIA.	.425" ALUMINUM PART #	.425" STEEL PART #	.425" STAINLESS PART #
-3	3/8" or 10mm	600333ERL	600303ERL	600393ERL
-3	7/16"	-	600343ERL	-
-4	3/8" or 10mm	600341ERL	-	-
-4	7/16"	-	600304ERL	-

STRAIGHT NON-ADJUSTABLE LONG



HOSE SIZE	BANJO BOLT DIA.	.425" ALUMINUM PART #	.425" STEEL PART #	.425" STAINLESS PART #
-3	3/8" or 10mm	600733ERL	600703ERL	600793ERL

STRAIGHT ADJUSTABLE LONG



HOSE SIZE	BANJO BOLT DIA.	.425" ALUMINUM PART #	.425" STEEL PART #	.425" STAINLESS PART #
-3	3/8" or 10mm	600433ERL	600403ERL	600493ERL

30° BENT NON-ADJUSTABLE LONG



HOSE SIZE	BANJO BOLT DIA.	.425" ALUMINUM PART #	.425" STEEL PART #	.425" STAINLESS PART #
-3	3/8" or 10mm	600833ERL	600803ERL	600893ERL

BANJOS

30° BENT ADJUSTABLE LONG



.425" ALUMINUM



.425" STEEL



.425" STAINLESS

HOSE SIZE	BANJO BOLT DIA.	PART #	PART #	PART #
-3	3/8" or 10mm	600533ERL	600503ERL	600593ERL

45° BENT NON-ADJUSTABLE LONG



.425" ALUMINUM



.425" STEEL



.425" STAINLESS

HOSE SIZE	BANJO BOLT DIA.	PART #	PART #	PART #
-3	3/8" or 10mm	601633ERL	601603ERL	601693ERL

90° BENT NON-ADJUSTABLE LONG



.425" ALUMINUM



.425" STEEL



.425" STAINLESS

HOSE SIZE	BANJO BOLT DIA.	PART #	PART #	PART #
-3	3/8" or 10mm	601533ERL	601503ERL	601593ERL

20° BENT SIDE BENT NON-ADJUSTABLE



.425" ALUMINUM



.425" STEEL



.425" STAINLESS

HOSE SIZE	BANJO BOLT DIA.	PART #	PART #	PART #
-3	3/8" or 10mm	601133ERL	601103ERL	601193ERL

8MM
STRAIGHT NON-
ADJ.
LONG



PART NO.	HOSE SIZE	HEIGHT/MATERIAL	BANJO BOLT DIAMETER
----------	-----------	-----------------	---------------------

601703ERL -3 8mm/Steel 3/8" or 10mm

8MM
30° BENT NON-
ADJ.
LONG



PART NO.	HOSE SIZE	HEIGHT/MATERIAL	BANJO BOLT DIAMETER
----------	-----------	-----------------	---------------------

601803ERL -3 8mm/Steel 3/8" or 10mm

TEES



HOSE SIZE	MOUNT BOLT DIA.	ALUMINUM PART #	STEEL PART #	STAINLESS PART #
-3	#10 or 3/16"	6453533ERL	6453503ERL	6453593ERL



HOSE SIZE	MOUNT BOLT DIA.	ALUMINUM PART #	STEEL PART #	STAINLESS PART #
-3	3/8" or 10mm	6453233ERL	6453203ERL	6453293ERL



HOSE SIZE	MOUNT BOLT DIA.	ALUMINUM PART #	STEEL PART #	STAINLESS PART #
-3	3/8" or 10mm	6453033ERL	6453003ERL	6453093ERL



Aluminum SPEED-SEAL:
Earl's aluminum SPEED-SEAL hose ends are not recommended for use on automotive brake systems. Avoidance of over torquing is especially important with aluminum sockets.

NOTE: As listed Earl's offers many configurations of adjustable and non-adjustable Banjo hose ends in both the U.S. .425" and the U.K. and European 8mm heights. It is important to use the correct Banjo bolts for each height.



FLAME GUARD INSULATION

IT IS OFTEN necessary to insulate hoses (or cables) from extreme heat sources. Earl's non-asbestos flame guard is a very efficient insulating sleeve for hose assemblies. It is made under a special process from a silicone rubber outer and braided glass inner sleeve bonded to the rubber. **Color:** Brick Red

PART NO BULK	I.D.	PERFORM-O-FLEX, PRO-LITE & AUTO-FLEX	SPEED FLEX SMOOTH BORE	SUPER STOCK
730006ERL	3/8	-	-3 & -4	-
730008ERL	1/2	-3,-4,& -5	-6	-4
730010ERL	3/4	-6,-7,-8, & -9	-8	-6 & -8
730012ERL	1	-10,-11, & -12	-	-10
730014ERL	1 1/4	-14 & -16	-	-12
730016ERL	1 1/2	-18 & -20	-	-



Meets AS1072 for aerospace flame protection applications

OPERATING TEMPERATURE
-65° F TO +500° F
W/ SPLASHES TO 2000° F

FLAME GUARD INSULATION - Full cut lengths

PART NO BULK	1FT./0.3M	3FT./0.9M	6FT./1.8M	10FT./3.0M
730006ERL	730106ERL	730306ERL	730606ERL	731006ERL
730008ERL	730108ERL	730308ERL	730608ERL	731008ERL
730010ERL	730110ERL	730310ERL	730610ERL	731010ERL
730012ERL	730112ERL	730312ERL	730612ERL	731012ERL
730014ERL	730114ERL	730314ERL	730614ERL	731014ERL
730016ERL	730116ERL	730316ERL	730616ERL	731016ERL

FLAME GUARD TAPE

Available in 1" width on a 12 foot roll.

Color: Brick Red



731001ERL

OPERATING TEMPERATURE
-65° F TO +500° F
W/ SPLASHES TO 2000° F

STAINLESS TUBE-BRAID™ PROTECTIVE COVERING

Earl's Tube-Braid™ is the least expensive way to finish off any custom engine modification. Stainless Tube-Braid™ is actually stainless steel that slips over existing hoses, and gives the look of the expensive line. Stainless Tube-Braid™ works ideally with Econ-O-Fit hose ends for the finished appearance of professional plumbing. They are also excellent for covering individual wires and cables and for containment of wire bundles.

I.D. RANGE	BULK PART NO.
1/4" to 3/8"	920010ERL
3/8" to 5/8"	920013ERL
3/4" to 1"	920001ERL
1" to 1-3/4"	920007ERL
1-1/4" to 2"	920008ERL
1-1/2" to 3"	920004ERL



Econ-O-Fits pg. 96