



INNOVATIVE PRODUCTS SINCE 1966

FULL LINE CATALOG



Tools and equipment for automotive technicians and battery specialists



INNOVATIVE PRODUCTS SINCE 1966



The EZ RED Company Headquarters

ABOUT US

In 1966, Walter R. "Tommy" Tucker purchased a new style Battery Hydrometer to sell from his small Wagon Jobber Business which he ran out of a Volkswagen Micro Bus. He soon discovered the uniqueness and quality in this inexpensive hydrometer. Tommy sold his business and became partners with the Hydrometer's inventor from Canada. As time progressed he bought out his partner and expanded the line. Mark Tucker joined in 1975 and his son Luke in 2001. Started in Tommy's basement on Laurel Bank Avenue. The company has moved from the basement to Tommy's Riverside Trailer Park, to 28 Oak Street and 20 years ago to its present location at Evergreen Corporate Park. With 24 employees in our E-Z Red family and over 250 products sold worldwide, we are thankful and proud to be a member of the Deposit on the Delaware community.

Tools and equipment for automotive technicians and battery specialists



WARRANTY

LIMITED LIFETIME WARRANTY

The EZ Red Company will guarantee this product to be free of manufacturers defects for a lifetime of intended use. This warranty shall not apply to products that have been misused, abused, damaged by accident or otherwise. Repairs or modifications performed by anyone other than The EZ Red Company or an authorized repair center will result in a breach of this warranty. The EZ Red Company is not responsible for damage or personal injury resulting from improper tool usage, product modifications, or abuse. The EZ Red Company reserves the right to repair or replace any defective products that qualify under implied warranty. Discontinued items that are covered under this warranty will be repaired or replaced for a period of 90 days following the discontinued announcement. Not all EZ Red products are covered under this Limited Lifetime Warranty.

LIMITED ONE YEAR WARRANTY

If within one (1) year from the date of purchase, the product fails due to a defect in material or workmanship, EZ Red Company will repair if possible or replace it free of charge. This warranty applies only to original purchaser, residing in the U.S. or Canada, and is non-transferable. EZ Red Company will not be liable for any incidental or consequential damages to purchaser, or any other party, for any loss, damage, injury, or expense of any kind or nature cause directly or indirectly by product or the failure of the product to operate properly. Some states do not allow the exclusion or limitation of incidental or consequential damages, so the above limitation or exclusion may not apply to you. This warranty is in lieu of all other express or implied warranties. All implied warranties, including the warranty of merchantability and the warranty of fitness of a particular purpose are hereby modified to exist only as stated above. The warranty does not apply to: (a) damage cause by accident, abuse, in handling, dropping; (b) acts of Gods; (c) units which have been subject to unauthorized repair, opened, taken apart or otherwise modified (d) units not used in accordance with directions; (e) damages exceeding the cost of the product; (f) depreciated or loss of charge time; (g) the finish on any portion of the product, such as surface scratches and/or weathering, as this is considered normal wear and tear. Some states do not allow a limitation of damages so the forgoing limitations may not apply to you. This warranty gives you specific legal rights and you may also have other rights, which vary from state to state.

On the following pages you will see each product marked with a code:

L90 = 90 DAY WARRANTY

L1Y= 1 YEAR WARRANTY

LLT = LIMITED LIFETIME

ND = NEW DEFECTIVE

TABLE OF CONTENTS



LIGHTING: PAGE 1

HOOD HAWK	PAGE 2
XTREME COB WORK LIGHT	PAGE 3
SOLARUS LIGHT	PAGE 3
PEN LIGHT	PAGE 3
COB LED POCKET LIGHT	PAGE 4
SLIM LIGHT	PAGE 4

HYDROMETERS: PAGE 5

BATTERY HYDROMETER 101	PAGE 6
ANTI-FREEZE HYDROMETER 102	PAGE 6
WINDSHIELD WASHER HYDROMETER 104	PAGE 6

RATCHETS: PAGE 7

LOCKING FLEX HEAD EXTENDABLE COMFORT GRIP	PAGE 8
LOCKING FLEX HEAD FULL CHROME GRIP	PAGE 8
EXTENDABLE RATCHETS COMFORT GRIP	PAGE 8
DOUBLE EXTRA LONG FULL CHROME GRIP	PAGE 10
3/4" EXTENDABLE FULL CHROME	PAGE 10
1" EXTENDABLE FULL CHROME	PAGE 10

SPECIALTY: PAGE 13

QUARTER STICKS	PAGE 14,15
HAND TOOL SETS	PAGE 17
PLASTIC REPAIR KIT WRENCHRAC SOCKET HOLDER	PAGE 16
FIVE IN ONE PLIERS KIWI PLIERS WRIST MAG	PAGE 18
TELESCOPING TOOLS	PAGE 19
RAZOR SCRAPERS	PAGE 20
WRENCH SETS	PAGE 22
HEX / TORX/ BIT SETS HEAT SHRINK	PAGE 21

BATTERY: PAGE 25

POWER POST CLEANERS	PAGES 26, 27, 28, 29
BATTERY POST CLEANERS	PAGES 30, 31
SERIES BATTERY CHARGERS	PAGE 32
FORMATION JUMPERS / ADAPTERS	PAGE 33
LOAD TESTERS	PAGE 34
MEMORY SAVERS	PAGE 35
BATTERY LIFTERS	PAGE 36
BATTERY FILLERS	PAGE 37
BATTERY MAINTENANCE KIT	PAGE 38
DVM / SOLUTION TESTERS	PAGE 39
BATTERY CABLE TOOLS	PAGE 40

ALIGNMENT: PAGE 41

EZLINE TRAILER ALIGNMENT	PAGE 42
EZLINE COMPLETE	PAGE 42
EZLINE ACCESSORIES	PAGE 42

WEIGHTS / DIMENSIONS

FOR ALL EZRED PRODUCTS	PAGE 44, 45
------------------------	-------------

INDEX

CATALOG INDEX	PAGE 46
---------------	---------



INNOVATIVE PRODUCTS SINCE 1966



LIGHTING

XLHLS

HOOD HAWK

PAGE 2

XL3300

EXTREME LIGHT

PAGE 3

SL3350

SOLARUS SUN LIGHT

PAGE 3

TF120

POCKET PEN LIGHT

PAGE 3

PCLED6

POCKET STICK LIGHT

PAGE 4

PL175

SLIM LIGHT

PAGE 4

LIGHTING

Tools and equipment for automotive technicians and battery specialists

HOOD HAWK

REVOLUTIONARY UNDERHOOD LIGHT



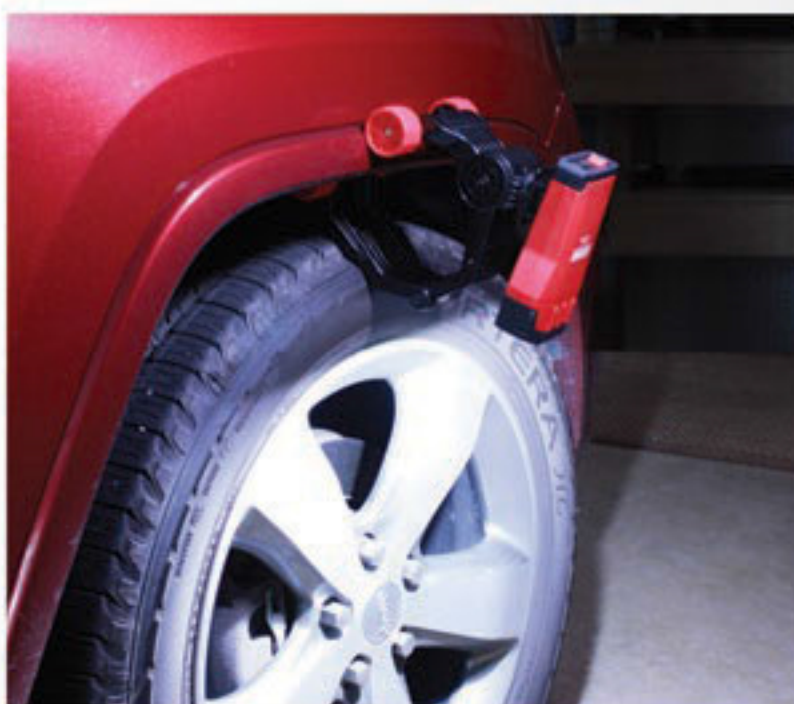
XLUHLS

Hood Hawk

- COB LED 1000 lumens on high setting
- 550 lumens on low setting
- 3 hour run time on high
- 6 hour runtime on low
- Clamp nearly anywhere for instant illumination
- Bumpers on clamp protect surfaces from damage
- Light adjusts on two axes for easy positioning
- Tough and durable ABS construction

Clamp swivels to any direction!

RECHARGEABLE



PATENT PENDING



XTREME LIGHT
COB Rechargeable Work Light

- COB LEDs
- 100% field repairable
- 3.7V 4400mAh Li-ion rechargeable battery(included)
- 450 Lumens High, 250 Lumens Low
- USB charging port
- Over-charge protection
- Impact protection, ergonomic grip handle and bumper
- Easy operating soft touch switch
- 360 degree rotating hook for easy maneuverability
- Warranty code LIY

XL334PK
COB XTREME Work Light 4 Pack

Wall Adapter, USB Cord,
Mobile Charger Adapter



SL1350
SOLARUS Pocket Sunlight

- 150 Lumens
- Run time 14 H
- Battery 3 X AAA
- Beam Distance 7M
- Impact Rating 1.8M
- Water Resistant IPX2
- Pocket Clip

HIGH CRI VALUE PAINT MATCHING LED LIGHTING



SL3350
SOLARUS Rechargeable Sunlight

- Match colors with precision
- COLOR Matching COB LEDS
- 450 Lumens High, 250 Lumens Low
- Up to 4 hours high / 7 hours low
- 6 hours of charging time
- 12V & 120V charger adapters included
- Over-charge protection
- Impact rating 1.8M
- 100 % Field Repairable
- USB Rechargeable
- ABS Construction
- Ratcheting Hook
- Warranty code LIY



TF120
COB Rechargeable Pocket Light

- 120 Lumens!
- Micro USB rechargeable
- High power LED
- 2 position switch
- Battery charge level indicator
- Up to 6 hour run time
- Water resistant
- Range up to 50 Meters
- IPX4 water resistance
- Super strong pocket clip
- Anodized aluminum body
- Warranty code LIY



**175
LUMENS**

— The Original —
POCKET LIGHT
SUPERCHARGED!

PCOB
Pocket COB LED Light Sticks

- COB LED's
- Magnetic Base
- Up to 7 Hour Run Time
- Pocket Clip
- Operates on 3 AAA Batteries
- Weather Resistant Button
- Warranty code L90



**175
LUMENS**

PCOB 12 PACKS
Pocket COB LED Light Sticks

- COB LED's
- Magnetic Base
- Up to 7 Hour Run Time
- Pocket Clip
- Operates on 3 AAA Batteries
- Weather Resistant Button
- Warranty code L90

12 PCOB (RED)

3 PCOB, 3 PCOB-OR,
3 PCOB-G, 3 PCOB-P

4 PCOB-OR, 4 PCOB-G



HI VIS COLORS

**175
LUMENS**

PL175 Series
Rechargeable Slim Light

- 100 lumen beam output
- 175 lumen flood light
- Water & impact resistant
- Micro USB rechargeable
- High power LED/COB
- Dual light: flood & beam
- Magnetic pocket clip
- Protected charge port
- Charge indicator
- Warranty Code L1Y



**SUPER SLIM
SUPER BRIGHT**



INNOVATIVE PRODUCTS SINCE 1966



HYDROMETERS

HYDROMETERS

- 101 BATTERY HYDROMETER PAGE 6
- 102 ANTI-FREEZE HYDROMETER PAGE 6
- 104 WINDSHIELD WASHER HYDROMETER PAGE 6

Tools and equipment for automotive technicians and battery specialists



BK101



SP101

101
Battery Hydrometer

- Temperature compensating
- Obtain direct, accurate readings
- Designed so that anyone can see the state of the battery acid
- Wide range of 1.100 – 1.300 SG
- Unbreakable, E-Z to read, economical
- Used by battery manufacturers worldwide
- Warranty code LLT

Please see page 33 for the B108 Refractometer.



BK102



SP102

102
Anti Freeze Hydrometer

- Tests ethylene glycol solutions
- Temperature compensating
- Obtain direct, accurate readings
- Wide range: +32°F to – 60° F
- Fahrenheit & Celsius scales
- Unbreakable, E-Z to read
- Tests both hot and cold solutions
- Tests Dex-Cool® (Used in late model vehicles)
- Warranty code LLT



BK104



S104

104
Windshield Washer Hydrometer

- Tests methanol solutions
- Temperature compensating
- Obtain direct, accurate readings
- Wide range: +32°F to – 60° F
- Fahrenheit & Celsius scales
- Unbreakable, E-Z to read
- Warranty code LLT



INNOVATIVE PRODUCTS SINCE 1966



RATCHETS

- MR12FL** LOCKING FLEX HEAD EXTENDABLE RATCHETS , COMFORT GRIP **PAGE 8**
- MR1224FL** LOCKING FLEX HEAD RATCHETS , FULL CHROME GRIP **PAGE 8**
- RK12** REPAIR KITS FOR RATCHET HEADS **PAGE 8**
- MR12** EXTENDABLE RATCHETS , COMFORT GRIP **PAGE 10**
- MR12XLC** DOUBLE EXTRA LONG FULL CHROME GRIP **PAGE 10**
- MR1X** 1" EXTENDABLE FULL CHROME **PAGE 10**

R
A
T
C
H
E
T
S

Tools and equipment for automotive technicians and battery specialists



**1
2
INCH**

**3
8
INCH**

**1
4
INCH**

**MR12 / MR38 / MR14
Extendable Ratchet**

- Unique, extendable locking shaft
- Thermal Plastic over-molded handle ensures firm grip
- Precise 5 degree drive head contains 72 teeth
- Meets and exceeds ANSI torque requirement
- Replacement Head Kits available
- Warranty code LLT

PLEASE SEE FACING PAGE FOR COMPLETE SPECS.

Also available: full set of all 3 ratchets Item # MR482



**1
2
INCH**

**3
8
INCH**

**1
4
INCH**

**MR12XLC / MR38XLC / MR14XLC
Full Chrome Ratchet**

- Double Extra Long
- Full Chrome for easy cleaning
- Low profile
- Reversible switch
- Exceeds ANSI torque requirements
- Replacement Head Kits available
- Warranty code LLT

PLEASE SEE FACING PAGE FOR COMPLETE SPECS.

Also available: full set of all 3 ratchets Item # MR482XLC



**3
4
INCH**

**1
INCH**

**MR34
Extendable 3/4" or 1" Ratchet**

- Unique, extendable locking shaft
- Extends from approx - 24" to 40"
- Knurled handle ensures firm grip
- Precise 15 degree drive head contains 24 teeth
- Replacement Head Kits available
- Meets and exceeds ANSI torque requirement
- Warranty code LLT

PLEASE SEE FACING PAGE FOR COMPLETE SPECS.

Head repair kit: Item # RK34
Head repair kit: Item # RK1X

All items listed below are available individually or in the 3 piece set.

ITEM #	DESCRIPTION	SPECS
MR12	EXTENDABLE RATCHET	.50" DRIVE X 13.78" TO EXTENDED LENGTH OF 19.79"
MR38	EXTENDABLE RATCHET	.375" DRIVE X 9.84" TO EXTENDED LENGTH OF 13.78"
MR14	EXTENDABLE RATCHET	.25" DRIVE X 6.89" TO EXTENDED LENGTH OF 8.85"
MR482	SET OF 3 EXTENDABLE RATCHETS	MR12, MR38, MR14 RATCHETS
RK12	11 PIECE REPAIR KIT FOR THE MR12	ALL THE PARTS YOU NEED TO REBUILD THE RATCHET HEAD
RK38	11 PIECE REPAIR KIT FOR THE MR38	ALL THE PARTS YOU NEED TO REBUILD THE RATCHET HEAD
RK14	11 PIECE REPAIR KIT FOR THE MR14	ALL THE PARTS YOU NEED TO REBUILD THE RATCHET HEAD

All items listed below are available individually or in the 3 piece set.

ITEM #	DESCRIPTION	SPECS
MR12XLC	XXL FULL CHROME RATCHET	.50" DRIVE X 22" LONG
MR38XLC	XXL FULL CHROME RATCHET	.375" DRIVE 16.00" LONG
MR14XLC	XXL FULL CHROME RATCHET	.25" DRIVE X 9.02"LONG
MR482XLC	SET OF 3 XXL FULL CHROME RATCHETS	MR12XLC, MR38XLC, MR14XLC RATCHETS
RK12	11 PIECE REPAIR KIT FOR THE MR12XLC	ALL THE PARTS YOU NEED TO REBUILD THE RATCHET HEAD
RK38	11 PIECE REPAIR KIT FOR THE MR38XLC	ALL THE PARTS YOU NEED TO REBUILD THE RATCHET HEAD
RK14	11 PIECE REPAIR KIT FOR THE MR14XLC	ALL THE PARTS YOU NEED TO REBUILD THE RATCHET HEAD

ITEM #	DESCRIPTION	SPECS
MR34	EXTENDABLE RATCHET	.75" DRIVE X 24.00" TO EXTENDED LENGTH OF 39.87"
RK34	11 PIECE REPAIR KIT FOR THE MR34	ALL THE PARTS YOU NEED TO REBUILD THE RATCHET HEAD
MR1X	EXTENDABLE RATCHET	1.00" drive for the 24 to extended length of 39.47"
RK1X	11 PIECE REPAIR KIT FOR RHW MR1X	ALL THE PARTS YOU NEED TO REBUILD THE RATCHET HEAD



MR12FL

MR38FL

MR14FL



Also available: full set of all 3 ratchets Item # MR482FL

**1
2
INCH**

**3
8
INCH**

**1
4
INCH**

**MR12FL / MR38FL / MR14FL
Locking Flex Head Extendable Ratchet**

- Locking 180° flex heads
- 72 tooth drive
- Comfort grip
- Low profile
- Reversible
- Extendable locking shaft
- Exceeds ANSI specs
- Warranty code LLT

PLEASE SEE FACING PAGE FOR COMPLETE SPECS.



MR1224FL

MR3818FL

MR1412FL



**1
2
INCH**

**3
8
INCH**

**1
4
INCH**

**MR1224FL / MR3818FL / MR1412FL
Locking Flex Head Full Chrome Ratchet**

- Locking 180° flex heads
- 72 tooth drive
- Full chrome grip
- Low profile
- Reversible
- Extendable locking shaft
- Exceeds ANSI specs
- Warranty code LLT

PLEASE SEE FACING PAGE FOR COMPLETE SPECS.



**XXL
EXTRA
LONG**

**1
2
INCH**

**3
8
INCH**

**1
4
INCH**

**MR1224F / MR3818F / MR1412F
Flex Head Comfort Grip Ratchet**

- 180° flex heads (non locking)
- 72 tooth drive
- Comfort grip
- Low profile
- Reversible
- Exceeds ANSI specs
- Ratchets are available separately
- Warranty code LLT

Also available : set of 3 ratchets
Item # MR482XLF

PLEASE SEE FACING PAGE FOR COMPLETE SPECS.

All items listed below are available individually or in the 3 piece set.

ITEM #	DESCRIPTION	SPECS
MR12FL	LOCKING FLEX HEAD EXTENDABLE RATCHET	.50" DRIVE X 13.78" TO EXTENDED LENGTH OF 19.79"
MR38FL	LOCKING FLEX HEAD EXTENDABLE RATCHET	.375" DRIVE X 9.84" TO EXTENDED LENGTH OF 13.78"
MR14FL	1/4" LOCKING FLEX HEAD EXTENDABLE RATCHET	.25" DRIVE X 6.89" TO EXTENDED LENGTH OF 8.85"
MR482FL	SET OF 3 LOCKING FLEX HEAD EXTENDABLE RATCHETS	MR12FL, MR38FL, MR14FL RATCHETS
RK12	11 PIECE REPAIR KIT FOR THE MR12FL	ALL THE PARTS YOU NEED TO REBUILD THE RATCHET HEAD
RK38	11 PIECE REPAIR KIT FOR THE MR38FL	ALL THE PARTS YOU NEED TO REBUILD THE RATCHET HEAD
RK14	11 PIECE REPAIR KIT FOR THE MR14FL	ALL THE PARTS YOU NEED TO REBUILD THE RATCHET HEAD

ITEM #	DESCRIPTION	SPECS
MR1224FL	XXL FULL CHROME LOCKING FLEX HEAD RATCHET	.50" DRIVE X 22" LONG
MR3818FL	XXL FULL CHROME LOCKING FLEX HEAD RATCHET	.375" DRIVE 16.75" LONG
MR1412FL	XXL FULL CHROME LOCKING FLEX HEAD RATCHET	.25" DRIVE X 10.25"LONG
MR1438FL	SET OF 2 XXL FULL CHROME LOCKING FLEX HEAD RATCHETS	MR1412FL, AND MR3818FL RATCHETS
RK12	11 PIECE REPAIR KIT FOR THE MR1224FL	ALL THE PARTS YOU NEED TO REBUILD THE RATCHET HEAD
RK38	11 PIECE REPAIR KIT FOR THE MR3818FL	ALL THE PARTS YOU NEED TO REBUILD THE RATCHET HEAD
RK14	11 PIECE REPAIR KIT FOR THE MR1412FL	ALL THE PARTS YOU NEED TO REBUILD THE RATCHET HEAD

All items listed below are available individually or in the 3 piece set.

ITEM #	DESCRIPTION	SPECS
MR1224F	XXL FLEX ONLY RATCHET	.50" DRIVE X 24" LONG
MR3818F	XXL FLEX ONLY RATCHET	.375" DRIVE 18.00" LONG
MR1412F	XXL FLEX ONLY RATCHET	.25" DRIVE X 12.00"LONG
MR482XLF	SET OF 3 XXL FLEX ONLY RATCHETS	MR1224F, MR3818F, MR1412F RATCHETS
RK12	11 PIECE REPAIR KIT FOR THE MR12XLC	ALL THE PARTS YOU NEED TO REBUILD THE RATCHET HEAD
RK38	11 PIECE REPAIR KIT FOR THE MR38XLC	ALL THE PARTS YOU NEED TO REBUILD THE RATCHET HEAD
RK14	11 PIECE REPAIR KIT FOR THE MR14XLC	ALL THE PARTS YOU NEED TO REBUILD THE RATCHET HEAD



The E-Z Red logo and brand has undergone a significant transformation. The new identity had to satisfy all of the existing expectations of what our original mark stands for; quality, innovation, and strength... while simultaneously moving the brand forward.

Striving to maintain the iconic and recognizable mark was a primary goal. This was achieved by carefully reconstructing the existing mark and studying its fundamental shapes, angles and weight. Color provides a strong visual link to our brand identity across a wide range of applications. The consistent representation of these core colors helps reinforce the distinctiveness of the E-Z Red brand.

Black, red, and blue serve as our brand's corporate colors for print and electronic applications. An extended color palette has been created for use in presentations and other corporate materials. To find colors that are consistent with the business needs of your department, please refer to the relevant style guides. To ensure consistent representation of our brand identity, we always use high-quality vendors and reproduction methods. I hope you will join us in embracing these new elements, designed to integrate the strength of our past with our future. Thank you for the significant role you play in helping fulfill its mission. Your loyalty, hard work, and support are deeply appreciated.



INNOVATIVE PRODUCTS SINCE 1966



SPECIALTY

412SS	QUARTER STICKS	PAGE 14, 15
HC001	SOCKET HOLDER, WRENCH RAC, PLASTIC REPAIR KIT	PAGE 17
KWP2	FIVE IN ONE PLIERS, KIWI PLIERS, WRIST MAG	PAGE 16
HH1000	TELESCOPING TOOLS	PAGE 19
MS3000	RAZOR SCRAPERS	PAGE 20
SHM38	WRENCH RACS, SOCKET HOLDERS	PAGE 17
WR5ML	WRENCH SETS	PAGE 22, 23
T1000	HEX / TORX BIT SETS, HEAT SHRINK	PAGE 21

SPECIALTY

Tools and equipment for automotive technicians and battery specialists



4S12L

Locking Quarter Stick

- ¼" Combination bit and square drive with locking heads
- Great for tight spots, under dashboards, and bumpers
- Custom Reversible switches
- Knurled low profile thumb wheels for extra precision
- Push button quick releases
- 180 degree locking flex heads at each end for multiple angles
- High polished chrome finish
- Exceeds ANSI torque requirements
- Warranty code LLT

Covered by US Patent No. D677, 536 and U.S. Patent No. 9,446,506.



4S04

Stubby Quarter Stick

- ¼" Combination bit and square drive
- Great for tight spots under dashboards and bumpers
- Custom Reversible switches
- Knurled low profile thumb wheels for extra precision
- Push button quick releases
- 180 degree flex heads at each end for multiple angles
- High polished chrome finish
- Exceeds ANSI torque requirements
- Warranty code LLT



4S38L

Dual Square Drive

- 15° offset heads
- Great for tight spots, under dashboards, and bumpers
- Custom reversible switch
- Knurled low profile thumb wheel for extra precision
- Push button quick release
- High polished Chrome finish
- Exceeds ANSI torque requirement
- Warranty code LLT

Covered by US Patent No. D677, 536 and U.S. Patent No. 9,446,506.



4S12XL
Extra Long Quarter Stick

- ¼" Combination bit and square drive with 15° offset heads
- Great for tight spots, under dashboards, and bumpers
- Custom Reversible switches
- Knurled low profile thumb wheels for extra precision
- Push button quick releases
- 180 degree locking flex heads at each end for multiple angles
- High polished chrome finish
- Exceeds ANSI torque requirements
- Warranty code LLT



4S08XL
8" Quarter Stick

- ¼" Combination bit and square drive with 15° offset heads
- Great for tight spots, under dashboards, and bumpers
- Custom Reversible switches
- Knurled low profile thumb wheels for extra precision
- Push button quick releases
- 180 degree locking flex heads at each end for multiple angles
- High polished chrome finish
- Exceeds ANSI torque requirements
- Warranty code LLT



4S04XL
Stubby Quarter Stick

- ¼" Combination bit and square drive with 15° offset heads
- Great for tight spots, under dashboards, and bumpers
- Custom Reversible switches
- Knurled low profile thumb wheels for extra precision
- Push button quick releases
- 180 degree locking flex heads at each end for multiple angles
- High polished chrome finish
- Exceeds ANSI torque requirements
- Warranty code LLT



4S3XL
3 Piece Quarter Stick Set

- 15° offset heads
- Great for tight spots, under dashboards, and bumpers
- Custom reversible switch
- Knurled low profile thumb wheel for extra precision
- Push button quick release
- High polished Chrome finish
- Exceeds ANSI torque requirement
- Warranty code LLT



Flex-head 1/4" Ratchet

MMS14
1/4" Mini Master Set 20 Pieces

- 1/4" flex head drive with bit holder end
- 8 spline low profile metric sockets (4-11mm)
- 10 bits
- 3" extension
- Rugged nylon roll up pouch
- LLT (Ratchet only)



Bit driver on end of 1/4" Ratchet

Spline Sockets



Bit set with sizes stamped on body.



412SS
33 Piece Socket & Bit Set

- 1/4" sockets : 4mm, 5mm, 6mm, 7mm, 8mm, 9mm, 10mm, 11mm, 12mm, 13mm
- 1/4" bits: PH 1, 2, 3 - PZ 0, 2(x 2pc), 3 - H3, 4, 5, 6 T 8, 10, 15, 20, 25, 27, 30, 35, 40
- 1/4" drive 4" extension bar
- 4S04: Stubby bit and socket driver
- 4S12L: Extra long bit and socket driver
- Blow molded case.
- Warranty code LLT



4S3XL
3 Piece Quarter Stick Set

- 15° offset heads
- Great for tight spots, under dashboards, and bumpers
- Custom reversible switch
- Knurled low profile thumb wheel for extra precision
- Push button quick release
- High polished Chrome finish
- Exceeds ANSI torque requirement
- Warranty code LLT

HOLDS UP TO 15 WRENCHES



**WR1500 - WR1500B - WR1500G
Magnetic Wrench Rac**

- Individual magnet design holds any size wrenches securely allowing EZ one handed access
- Wrench Rac is designed to magnetically hold from the center of the wrench, unlike conventional "V" style holders
- Non-scratch Heavy Duty anodized aluminum with magnetic end caps
- Great for flex head & stubby wrenches
- Warranty code LIY

ALSO AVAILABLE:

**WR2400 - WR2400B
24 Inch Magnetic Wrench Rac**

SHM38



3/8" DRIVE

- Holds 12 metric sockets ranging from 8-19mm
- Holds 11 SAE sockets ranging from 1/4-7/8 inch

1/4" DRIVE

- Holds 12 metric sockets ranging from 5-15mm
- Holds 10 SAE sockets from 3/16-9/16 inch

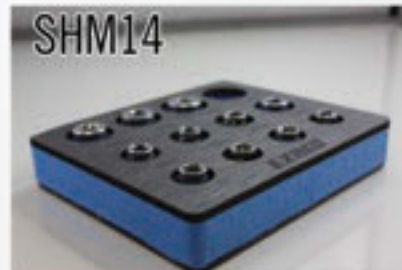
**SHM38/SHM14/SHS38/SHS14
Magnetic Socket Holders**

- Socket Sizes, drive size, and type Printed right on the socket holder
- Helps cut down socket clutter and helps to find the right socket quickly
- Fits easily into tool boxes or shop cart drawers for quick storage
- Rugged EVA foam takes abuse and resists common shop fluids
- Warranty code LIY

SHS38



SHM14



SHS14



**GREAT FOR
DEEP SOCKETS TOO!**



**HC001
Cordless Plastic Repair Kit**

- Adjustable head for multiple angles
- LED Light
- LED charging and low battery indicator lights
- 120 V charger included
- Finished repair is strong and flexible
- Great for repairing broken locator pins, door panel clips, and tabs
- Expensive plastic parts can be saved
- 3 types of 100 repair pins included
- Kit comes in a hard plastic storage case
- Warranty code LIY



FIVE FUNCTIONS:

- 1.) 3.5" Long gripping nose pliers
- 2.) Bolt/ Screw extractor
- 3.) 7 sizes of wire strippers
10-12-14-16-18-20-22 (AWG)
- 4.) Wire cutter
- 5.) Crimps fasteners 10-22 (AWG)

PG5

Five in One Pistol Grip Pliers

- 10" long nose pliers with crimping, cutting, wire stripping, and fastener extraction functions
- Offset jaws offer a clear line of sight to the work being performed
- Ergonomic design of pistol grip is easier to use in difficult to reach areas
- Offers better orientation of the hand and forearm during grip exertion, reducing muscle fatigue



KWP2

2 Piece Kiwi Pliers Set

- Includes 6" short nose and 8" long nose Kiwi Pliers.
- Needle-nose pliers at an angle.
- More powerful grip with less effort.
- Better hand alignment provides a clear line of sight.
- Curved handles fit your hand comfortably.
- Internal spring opens the pliers jaws.
- Made from heat treated long lasting quality steel
- Warranty code LLT



WM396

Wrist mag Magnetic Wrist Band

- Super strong with 6 neodymium magnets!
- Rated to hold 6 pounds of steel parts.
- Saves time by keeping steel parts close at hand.
- Ends the frustration of losing loose nuts & bolts.
- Magnets also hold tools.
- Made from comfortable waterproof neoprene.
- Warranty code ND



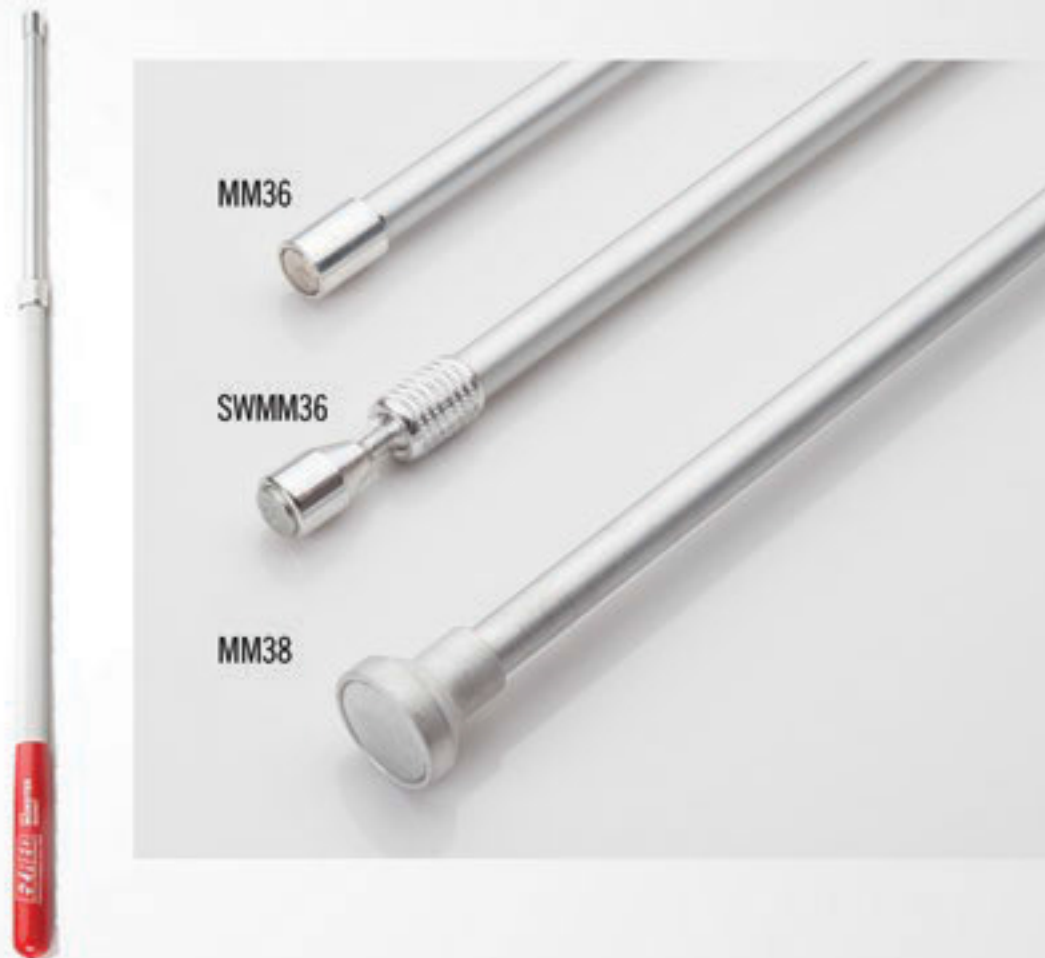
HH1000 / HH40
Locking / Extendable Monster Hood Props

- Exclusive double locking system includes button locks and clutch locks
- Special guide channel ensures the button lock to line up every time
- The only prop to hold SUV, crossover and mini-van gates 100% open
- Made of thick wall tube aluminum
- Warranty code L90

ITEM #	COLOR	MIN LENGTH	MAX LENGTH	DIAMETER
HH1000	Red	25"	60"	1"

ITEM #	COLOR	MIN LENGTH	MAX LENGTH	DIAMETER
HH40	Red	23"	40"	.50"

Replacement tips are available



MM36 / SWMM36 / MM38
Locking / Extendable Monster Magnets

- Telescoping with clutch locks
- Insulated handle
- Neodymium rare earth magnet
- Removes broken axle pieces
- Will start bolts in tight spots
- Made of thick wall tube aluminum
- Warranty code L90

ITEM #	STRENGTH	MIN LENGTH	MAX LENGTH	MAGNET SIZE
MM36	10 lbs.	20.5"	36"	.50" X 1"

ITEM #	STRENGTH	MIN LENGTH	MAX LENGTH	FEATURE
SWMM36	10 lbs.	22"	38"	180 DEGREE LOCKING SWIVEL HEAD

ITEM #	STRENGTH	MIN LENGTH	MAX LENGTH	MAGNET SIZE
MM38	20 lbs	20.5"	38"	1" X .25"



NEW! Solid aluminum scraper heads!



Plastic blades, Item # 77239 are also available

**MS3000
Monster Scraper Kit**

- Three scrapers and five spare razor blades
- Includes: 13", 8" and 4" long scrapers
- Unique design angled head
- Durable and dependable
- In a blow molded case
- Warranty code L90

NEW! Solid aluminum scraper head!



Store blades in handle



Powder-coated aluminum heads.



**MS1900
19" Extra Long Scraper**

- Super heavy duty
- Extra long 19" length
- Rugged aluminum body
- Comfortable poly foam grip
- Store up to 15 extra blades in the handle
- Warranty code L90

NEW! Solid aluminum scraper head!



MS60010PK Jar of ten MS600

**MS600
6" Monster Scraper**

- Pocket sized, 6" long
- Single-edge razor included
- Heavy-duty, made to last
- Angled head
- Rugged aluminum body
- Red vinyl grip
- Warranty code LLT

NEW! Solid aluminum!



MS40020PK Jar of twenty MS400

**MS400
Compact Monster Scraper**

- Compact at 4" long
- Scrape in tight spots
- Ergonomic design
- Molded from chemical resistant PC
- Single-edge razor blade included
- Warranty code LLT



HS34
Heat Shrink Tube Set

- 8 Different size tubes.
- 158 Total pieces.
- Tubes shrink to fit over cable splices & can be used for wire harnessing, covering, marking & bundling wires.
- Use for auto, marine, home, industrial, and many more applications.
- 2:1 Shrink Ratio.
- Case features a molded in ruler.
- Assortment includes sizes in multi-colors:.
- 2.5 x 170mm, 3.0 x 170mm, 5.0 x 150mm, 6.0 x 150mm, 16 x 170mm, 10 x 170mm, 12 x 170mm, 20 x 170mm
- Warranty code ND



T1000
Low Profile Torx Bit Set

- Super low profile design allows for superior access
- Wrench drive side fits securely on any 10mm,12mm, or 17mm wrench or socket.
- Precision made
- Warranty code LLT

T1000 Sizes: T10, T15, T20, T25, T27, T30, T40, T45, T47, T50, T55, T60



HLS1000
Low Profile HEX Bit Set

- Super low profile design allows for superior access
- Wrench drive side fits securely on any 10mm,12mm, or 17mm wrench or socket.
- Precision made
- Warranty code LLT

HLS1000 Sizes: SAE 1/8, 9/64, 5/32, 3/16, 7/32, 1/4, 5/16, 3/8, 7/16, 1/2, 9/16, 5/8



SD3
3 Pc Square Adapter Bit Set

- Low profile design for superior access to tight areas
- Wrench side fits on any 17mm, 12mm, or 10mm wrench.
- Ball Detents on both sides
- Set includes 1/2", 3/8" and 1/4" drive adapters
- Warranty code LLT



WR5ML
5 Pc. Locking Flex Head Ratcheting Wrench Set

- Box ends with offset heads for greater reach capabilities
- Extra Long Spline with 180 degree locking flex heads
- Reverse switch
- Packaged in the signature E-Z Red high density foam tray
- Includes sizes: 8mm x 10mm, 12mm x 14mm, 13mm x 15mm, 16mm x 18mm and 17mm x 19mm
- Warranty code LLT

PLEASE SEE FACING PAGE FOR COMPLETE SPECS.

Foam Tray Included



WR4SL
4 Pc. Locking Flex Head Ratcheting Wrench Set

- Box ends with offset heads for greater reach capabilities
- Extra Long Spline with 180 degree locking flex heads
- Reversible switch
- Packaged in the signature E-Z Red high density foam tray
- Includes sizes: 5/16 x 3/8, 7/16 x 1/2, 9/16 x 5/8, 1 1/16 x 3/4
- Warranty code LLT

PLEASE SEE FACING PAGE FOR COMPLETE SPECS.

Foam Tray Included



NR5M
5 Pc. Extra Long Flex Head Ratcheting Wrench Set

- Box ends with slim heads for greater reach capabilities
- Extra Long Spline with 180 degree flex heads
- Packaged in the signature E-Z Red high density foam tray
- Includes sizes: 8mm x 10mm, 12mm x 14mm, 13mm x 15mm, 16mm x 18mm and 17mm x 19mm
- Warranty code LLT

PLEASE SEE FACING PAGE FOR COMPLETE SPECS.

Foam Tray Included

All items listed below are available individually or in the 5 piece set.



Universal Spline fits 6 different fasteners

ITEM #	DESCRIPTION	DIMENSIONS
WRM810	8 X 10 MM	9.5" LONG X .75" WIDE X .50" HIGH
WRM1214	12 X 14 MM	12.75" LONG X 1.12" WIDE X .62" HIGH
WRM1315	13 X 15 MM	14.25" LONG X .125" WIDE X .50" HIGH
WRM1618	16 X 18 MM	16.75" LONG X 1.37" WIDE X .75" HIGH
WRM1719	17 X 19 MM	16.75" LONG X 1.37" WIDE X .75" HIGH
WRM5L	COMPLETE SET	20.25" LONG X 9.25" WIDE X 1.25" HIGH

REPLACEMENT HEADS ARE AVAILABLE.

All items listed below are available individually or in the 4 piece set.



Universal Spline fits 6 different fasteners

ITEM #	DESCRIPTION	DIMENSIONS
WRS51638	5/16" X 3/8"	9.5" LONG X .75" WIDE X .50" HIGH
WRS71612	7/16" X 1/2"	12.75" LONG X 1.12" WIDE X .62" HIGH
WRS91658	9/16" X 5/8"	16.75" LONG X 1.37" WIDE X .75" HIGH
WRS111634	11/16" X 3/4"	16.75" LONG X 1.37" WIDE X .75" HIGH
WR4SL	COMPLETE SET	22" LONG X 8" WIDE X 1" HIGH

REPLACEMENT HEADS ARE AVAILABLE.

All items listed below are available individually or in the 5 piece set.



Universal Spline fits 6 different fasteners

ITEM #	DESCRIPTION	DIMENSIONS
NRM810	8 X 10 MM	9.5" LONG X .75" WIDE X .50" HIGH
NRM1214	12 X 14 MM	2.75" LONG X 1.12" WIDE X .62" HIGH
NRM1315	13 X 15 MM	14.25" LONG X .125" WIDE X .50" HIGH
NRM1618	16 X 18 MM	16.75" LONG X 1.37" WIDE X .75" HIGH
NRM1719	17 X 19 MM	16.75" LONG X 1.37" WIDE X .75" HIGH
NR5M	COMPLETE SET	20.25" LONG X 9.25" WIDE X 1.25" HIGH

REPLACEMENT HEADS ARE AVAILABLE.

All items listed below are available individually or in the 5 piece set.



Universal Spline fits 6 different fasteners

ITEM #	DESCRIPTION	DIMENSIONS
WRM810	8 X 10 MM	9.5" LONG X .75" WIDE X .50" HIGH
WRM1214	12 X 14 MM	12.75" LONG X 1.12" WIDE X .62" HIGH
WRM1315	13 X 15 MM	14.25" LONG X .125" WIDE X .50" HIGH
WRM1618	16 X 18 MM	16.75" LONG X 1.37" WIDE X .75" HIGH
WRM1719	17 X 19 MM	16.75" LONG X 1.37" WIDE X .75" HIGH
WRM5L	COMPLETE SET	20.25" LONG X 9.25" WIDE X 1.25" HIGH

REPLACEMENT HEADS ARE AVAILABLE.

All items listed below are available individually or in the 4 piece set.



Universal Spline fits 6 different fasteners

ITEM #	DESCRIPTION	DIMENSIONS
WRS51638	5/16" X 3/8"	9.5" LONG X .75" WIDE X .50" HIGH
WRS71612	7/16" X 1/2"	12.75" LONG X 1.12" WIDE X .62" HIGH
WRS91658	9/16" X 5/8"	16.75" LONG X 1.37" WIDE X .75" HIGH
WRS111634	11/16" X 3/4"	16.75" LONG X 1.37" WIDE X .75" HIGH
WR4SL	COMPLETE SET	22" LONG X 8" WIDE X 1" HIGH

REPLACEMENT HEADS ARE AVAILABLE.

All items listed below are available individually or in the 5 piece set.



Universal Spline fits 6 different fasteners

ITEM #	DESCRIPTION	DIMENSIONS
NRM810	8 X 10 MM	9.5" LONG X .75" WIDE X .50" HIGH
NRM1214	12 X 14 MM	2.75" LONG X 1.12" WIDE X .62" HIGH
NRM1315	13 X 15 MM	14.25" LONG X .125" WIDE X .50" HIGH
NRM1618	16 X 18 MM	16.75" LONG X 1.37" WIDE X .75" HIGH
NRM1719	17 X 19 MM	16.75" LONG X 1.37" WIDE X .75" HIGH
NR5M	COMPLETE SET	20.25" LONG X 9.25" WIDE X 1.25" HIGH

REPLACEMENT HEADS ARE AVAILABLE.



INNOVATIVE PRODUCTS SINCE 1966

NEW PACKAGING



The E-Z Red logo and brand has undergone a significant transformation. The new identity had to satisfy all of the existing expectations of what our original mark stands for; quality, innovation, and strength... while simultaneously moving the brand forward.

Striving to maintain the iconic and recognizable mark was a primary goal. This was achieved by carefully reconstructing the existing mark and studying its fundamental shapes, angles and weight. Color provides a strong visual link to our brand identity across a wide range of applications. The consistent representation of these core colors helps reinforce the distinctiveness of the E-Z Red brand.

Black, red, and blue serve as our brand's corporate colors for print and electronic applications. An extended color palette has been created for use in presentations and other corporate materials. To find colors that are consistent with the business needs of your department, please refer to the relevant style guides. To ensure consistent representation of our brand identity, we always use high-quality vendors and reproduction methods. I hope you will join us in embracing these new elements, designed to integrate the strength of our past with our future. Thank you for the significant role you play in helping fulfill its mission. Your loyalty, hard work, and support are deeply appreciated.

Tools and equipment for automotive technicians and battery specialists



BATTERY

S505	POWER POST CLEANERS	PAGE 26, 27, 30, 31
BK501	MANUAL BATTERY POST CLEANERS	PAGE 28, 29
KS1272-D - KS1440PTCLP-B	SERIES BATTERY CHARGERS	PAGE 38
BK201	FORMATION JUMPERS	PAGE 37
KS1612	LOAD TESTERS	PAGE 32
MS4000	MEMORY SAVER	PAGE 39
BK520	BATTERY LIFTERS	PAGE 34
B901	BATTERY FILLERS	PAGE 35
BMK1914	BATTERY MAINTENANCE KIT	PAGE 36
EZ612	DVM / SOLUTION TESTERS	PAGE 33
793CS	CABLE CUTTERS -LUG CRIMPERS	PAGE 38



ITEM #	STEM SIZE	STEM LENGTH	DIMENSIONS	MAX POST DIAMETER	MAX POST LENGTH
505BT	.31"	1.18"	1.83" X 2.64"	18mm	.625"
ITEM #	STEM SIZE	STEM LENGTH	DIMENSIONS	MAX POST DIAMETER	MAX POST LENGTH
505BTSSHQD	.25"	1.02"	1.63" X 2.50"	18mm	.625"

505BT / 505BTSSHQD
"Bent-Tooth" Power Post Cleaner

- Bent tooth staple cloth. The wires have a 70° bend.
- Clean up to 50 posts per minute
- 400 to 800 RPM is strongly recommended
- Warranty code ND

Helpful hint:

The 505 Cleans up to 1000 battery posts in one direction. After the effectiveness diminishes, switch or reverse machine, or electric / pneumatic drill for extending the life of this cleaner.



ITEM #	STEM SIZE	STEM LENGTH	DIMENSIONS	MAX POST DIAMETER	MAX POST LENGTH
505ST	.31"	1.18"	1.83" X 2.64"	18mm	.625"
ITEM #	STEM SIZE	STEM LENGTH	DIMENSIONS	MAX POST DIAMETER	MAX POST LENGTH
505STSSHQD	.25"	1.02"	1.63" X 2.50"	18mm	.625"

505ST / 505STSSHQD
"Straight-Tooth" Power Post Cleaner

- Straight tooth staple cloth where the wires are perpendicular from the inside circumference.
- Clean up to 50 posts per minute
- 400 to 800 RPM is strongly recommended
- Warranty code ND

Helpful hint:

The 505 Cleans up to 1000 battery posts in one direction. after the effectiveness diminishes, switch or reverse machine, or electric / pneumatic drill for extending the life of this cleaner.



ITEM #	STEM SIZE	STEM LENGTH	MAX POST DIAMETER	MAX POST LENGTH	DIMENSIONS
505JP	.25"	1.062"	11-15mm	1.75"	1.62" X 2.5"

505JP
"JIS" Power Post Cleaner

- JIS indicates Japanese Industrial Standard
- Clean up to 50 posts per minute
- 400 to 800 RPM is strongly recommended
- Warranty code ND

Helpful hint:

The 505 Cleans up to 1000 battery posts in one direction. after the effectiveness diminishes, switch or reverse the machine, or electric / pneumatic drill for extending the life of this cleaner.



Fiberglass shaft

505N
Negative Power Post Cleaner

- Bent tooth staple cloth. The wires have a 70° bend.
- Clean up to 50 posts per minute
- 400 to 800 RPM is strongly recommended
- Warranty code ND

Helpful hint:

The 505N cleans up to 1000 battery posts in one direction. after the effectiveness diminishes, switch or reverse machine, or electric / pneumatic drill for extending the life of this cleaner.

ITEM #	STEM SIZE	STEM LENGTH	MAX POST DIAMETER	MAX POST LENGTH	DIMENSIONS
505N	.25"	1.062"	16mm	1.75"	1.83" X 2.75"



Steel shaft with quick connect

505NSSHQD
Negative Power Post Cleaner Steel Shaft

- Bent tooth staple cloth. The wires have a 70° bend.
- Clean up to 50 posts per minute
- 400 to 800 RPM is strongly recommended
- Warranty code ND

Helpful hint:

The 505NSSHQD cleans up to 1000 battery posts in one direction. after the effectiveness diminishes, switch or reverse machine, or electric / pneumatic drill for extending the life of this cleaner.

ITEM #	STEM SIZE	STEM LENGTH	MAX POST DIAMETER	MAX POST LENGTH	DIMENSIONS
505NSSHQD	.25"	1.02"	16mm	1.75"	1.63" X 2.50"



Fiberglass shaft

505JPN
JIS Power Post Cleaner

- JIS indicates Japanese Industrial Standard
- Clean up to 50 posts per minute
- 400 to 800 RPM is strongly recommended
- Warranty code ND

Helpful hint:

The 505JPN cleans up to 1000 battery posts in one direction. after the effectiveness diminishes, switch or reverse machine, or electric / pneumatic drill for extending the life of this cleaner.

ITEM #	STEM SIZE	STEM LENGTH	MAX POST DIAMETER	MAX POST LENGTH	DIMENSIONS
505JPN	.25"	1.062"	11-13mm	1.75"	1.83" X 2.75"



BK501



S501



BK50112PCK

501

Battery Terminal Cleaner Wire Brush

- Highest quality cleaner of its kind
- Brush will not twist loose!!
- Protective cover fits both ends
- Clean top post terminals
- Great for battery cable ends
- Ensures a great connection
- Available on vinyl cards or bulk
- Warranty code ND



BK503



S503

503

Battery Janitor

- Reshape battery terminals
- Ensures a great connection
- Steel blades stay sharp
- Highest quality cleaner of its kind
- Made from unbreakable plastic
- Available on vinyl cards or bulk
- Warranty code ND



BK504



S504



BK50412PCK

504

Battery Terminal Cleaner Steel Blades

- Reshape battery cable ends
- Staple cloth removes corrosion from posts
- Ensures a great connection
- Steel blades stay sharp
- Protective cover fits both ends
- Made from durable plastic
- Available on vinyl cards, bulk, or counter display
- Warranty code ND



BK516



SP516R



BK51620PCK

516
Side Terminal Cleaner

- Center brush cleans threaded area
- Circular outer brushes clean contact area
- Cleans cable end with stud removed
- ¼" ratchet included with the EZSP516R
- Can be used with ¼" impact tools
- Available packaged, bulk, or counter display
- Warranty code ND



BK541



S541



BK54112PCK

541
4-in-1 Battery Terminal Cleaner

- Service most battery post types and cable ends
- Top post, Group 31 Truck, Marine, and Side Terminal
- Available packaged on vinyl card for retail sales, bulk, or counter display
- Warranty code ND



BK5340D
3/4" Wire Brush

- Quick disconnect
- Use with pneumatic or any type of drill
- Clean top terminal cable ends
- Case quantity 10.
- Warranty code ND



FITS ANY 1/4" QUICK DISCONNECT TOOL



**PP12PK
Battery Brush Kit**

- Clean and polish corroded battery posts
- 400 to 800 RPM recommended
- 1/4" Hexagonal drive shaft to use with air drill or cordless driver.

KIT INCLUDES

- 6 pieces 505BTSSHQD top post power battery brushes
- 3 pieces 506COSSHQD side terminal and group 31 brushes
- 3 pieces 509SSHQD utility brushes

- Warranty code ND

Spins over the battery post, at a recommended maximum speed of 800 RPM's. When it starts losing it's effectiveness, the machine, or electric pneumatic drill can be switched to reverse to extend the life.



509SSHQD



**509SSHQD
Utility Brush**

- Cleans Side terminals
- Removes corrosion from a variety of surfaces
- Can be used in many applications
- Stainless steel brushes are made to last
- Warranty code ND



506COSSHQD



**506COSSHQD
S/T and Group 31 Brush**

- Center hole accommodates the threaded stud
- Outer brushes clean contact area
- Warranty code ND



505BTSSHQD



**505BTSSHQD
Top Post Brush**

- Clean and polish entire battery post
- Lasts for up to 1000 battery posts
- 400 to 800 RPM is strongly recommended
- 18mm post size. "BT" indicates bent tooth staple cloth where the wires are at a 70° bend.
- Warranty code ND



BK201
Cup Ends

- Simple to install on many different battery types
- Pre-tinned wire will not pull out of lead
- Used by battery manufacturers worldwide
- 10 gauge wire
- Universally sized
- Warranty code ND



BK260
Clip Ends

- 50 amp clips, crimped and soldered to wire
- Pre-tinned wire for a secure bond
- Joints will not loosen or corrode
- E-Z to install and remove
- Can be used on many different battery types
- Warranty code ND



BK500
50 Amp Replacement Clips

- Copper plated steel
- Red and black vinyl insulators included
- Zinc plated 2 mm springs
- Warranty code ND

BK605P



Group 31 positive Molded "+" on the top

BK601



Side terminal universal

BK605N



Group 31 negative Molded "-" on the top

BK605U



Group 31 universal

BK601 / BK605 / BK605U
Charging Post / Adapters

- The two arms make it E-Z to install and remove.
- BK601 is a one size fits all (Universal) 3/8" -16 thread size.
- Used for charging, testing or as an adapter.
- BK605 / BK605U fits the 3/8" -16 threaded stud on a group 31 battery.
- Warranty code ND



506
Side Terminal Cleaner

- Center brush cleans inside threads of side terminal batteries
- Outer brushes clean contact area
- Warranty code ND



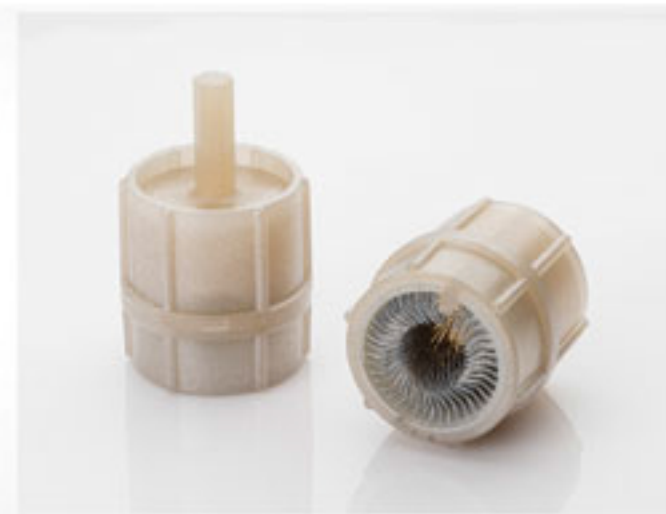
506CO / 506COSSHQD
Group 31 Battery Post Cleaner

- Center hole accommodates the threaded stud
- Outer brushes clean contact area
- Warranty code ND



509 / 509SSHQD
Utility Brush

- Cleans Side terminals
- Removes corrosion from a variety of surfaces
- Can be used in many applications
- Stainless steel brushes are made to last
- Warranty code ND



507BT
Bent Tooth Commercial Post

- Clean battery posts up to 1 inch in height
- Cleans tops and sides of battery posts
- Boxed in quantities of 200 per carton
- Warranty code ND

ITEM #	STEM SIZE	STEM LENGTH	DIMENSIONS	MAX POST DIAMETER	MAX POST LENGTH
507BT	.31"	1.18"	1.83" X 2.89"	18mm	.85"



502
Bi-level Marine Post

- Top layer of staple cloth cleans threaded area.
- Bottom layer cloth cleans the lead base.
- Boxed in quantities of 200 per carton.
- Warranty code ND

ITEM #	STEM SIZE	STEM LENGTH	DIMENSIONS	MAX POST DIAMETER	MAX POST LENGTH
502	.31"	1.18"	1.83" X 2.89"	9mm	.80"



KS1612
250 Amp Load Tester

- 15 second manual test
- 0-16 volt scale
- 6 and 12 volt zones
- Convenient 6 & 12 volt test buttons
- 4 gauge test leads
- Will test up to a 500 CCA battery
- No sparking at the battery as connection is made inside the tester.
- Warranty code L90



BT104
125 Amp Load Tester

- Test 6 and 12 volt batteries.
- This rugged unit is built to last.
- Heavy duty insulated safety clamps with 300 Amp jaws.
- Perform diagnostic tests: state of charge, battery load test, charging system test.
- Lightweight and easy to use.
- Pistol grip
- Warranty code L90



B1100
100 Amp Load Tester

- Test 6 and 12 volt batteries
- Test complete in 10 seconds
- Copper plated clamps
- Instructions on back label
- Warranty code L90



EZ612
Digital Volt Meter

- Test both 6 and 12V batteries.
- Checks charging systems.
- Tests to within 1/100th of a volt.
- Polarity reversal and over voltage protection.
- Accuracy: $\pm .03$ DCV.
- Warranty code L90



B108
2-in-1 Refractometer

- Use only one drop of solution
- Adjustable lens focus
- Test Propylene Glycol
- Test Ethylene Glycol
- Calibration adjustment screw
- Check state of battery charge (specific gravity)
- Screwdriver, eyedropper, and padded case included.
- Fahrenheit & centigrade scales
- Warranty code L90



BK101



SP101

101
Battery Hydrometer

- Temperature compensating
- Obtain direct, accurate readings
- Designed so that anyone can see the state of the battery acid
- Fahrenheit & Celsius scales
- Wide range of 1.100 – 1.300 SG
- Unbreakable, E-Z to read, economical
- Used by battery manufacturers worldwide
- Warranty code LLT



BK520



S520

BK520 / S520

Side Battery Lifter

- All steel construction makes this battery lifter last a long time
- The rubber pads are adhered with a super strong adhesive
- Non-slip ribbed vinyl hand grip
- Lift batteries from 4½ to 7½ inches wide
- Warranty code L90



BK530



S530

BK530 / S530

Super Grip Battery Lifter

- Tapered design for tight spots
- Round over teeth grip battery tight
- Heavy duty rivets
- All steel Construction
- Multiple ply rubber strap handle
- Fits virtually all car batteries including group 65
- Warranty code L90



BK550

BK550

Battery Lifter

- Overall spread is 18¼ inches
- Double grip jaw with zinc plated safety catch
- Heavy duty acid resistant vinyl strap
- Warranty code L90



BK560



S560

BK560 / S560

Deep Cycle Battery Lifter

- Lift deep cycle golf cart batteries from golf carts
- Place the hooks on the end of the lifter into the slots at the ends of the battery
- Warranty code L90



B901N Replacement Nozzle

B901
Jug Type Battery Filler

- Acid resistant polyethylene
- Automatic shut off to prevent overflowing
- Double action valve tip prevents after drips
- 2 ¼ quart capacity
- Warranty code ND



S929ADP Motorcycle battery adapter is included with this product, but it is also available as a separate item

S929
Dry Charge Filler

- Fast, neat way to fill batteries
- S929ADP motorcycle battery adapter is included
- Positive thumb release valve controls acid flow
- Cell-eye shows when cell is full
- Ribbed nipple holds tube on snugly
- Spacers included for different fill heights
- Warranty code ND



BK919
Bulb Type Battery Filler

- 6 ounce capacity
- Acid resistant
- Built in hanger
- Compact at 9 inches long
- Warranty code ND



BMK1914
7 Piece Battery Maintenance Kit

This kit includes everything for cleaning and maintaining battery terminals

- BK541 4-in-1 Battery Terminal Cleaner
- BK703 5/16" Side Terminal Ratchet
- BK708 10mm Side Terminal Ratchet
- BK705 XL 5/16" Side Terminal Ratchet
- BK725 Battery Pliers
- BK720IM Battery Terminal Spreader / Cleaner
- BK706 Battery Terminal Puller
- Warranty code L90



BK703 5/16" size



BK708 10mm size



BK705 5/16" size. Longer handle, added reach and leverage

BK703 / BK705 / BK708
Side Terminal Wrenches

- Reversible ratcheting box wrenches
- Made of heavy duty chrome plated steel
- Use for side terminal batteries only
- Insulated handle
- Accommodates the 506 side terminal cleaner
- Warranty code L90



BK720IM
Battery Terminal Spreader

- Spreads and cleans clamp in one quick operation
- Prolongs battery terminal life
- Insulated handles
- Warranty code L90



BK725
Angle Nose Battery Pliers

- Contoured head fits in tight spots
- Grips hex, square, or rounded nuts
- Drop forged steel jaws for super gripping
- Insulated handles
- Warranty code L90



BK706
Battery Terminal Puller

- Tapered jaw will not damage post
- Adjustable height
- Knurled pressure screw
- Internal springs
- Warranty code L90



BK541
4-in-1 Battery Terminal Cleaner

- Service most battery post types and cable ends with one tool; Top post, Group 31 Truck, Marine, and Side Terminal
- Warranty code ND



BK201
Cup Ends

- Simple to install on many different battery types
- Pre-tinned wire will not pull out of lead
- Used by battery manufacturers worldwide
- 10 gauge wire
- Universally sized
- Warranty code ND



BK260
Clip Ends

- 50 amp clips, crimped and soldered to wire
- Pre-tinned wire for a secure bond
- Joints will not loosen or corrode
- E-Z to install and remove
- Can be used on many different battery types
- Warranty code ND



BK500
50 Amp Replacement Clips

- Copper plated steel
- Red and black vinyl insulators included
- Zinc plated 2 mm springs
- Warranty code ND

BK605P



Group 31 positive Molded "+" on the top

BK601



Side terminal universal

BK605N



Group 31 negative Molded "-" on the top

BK605U



Group 31 universal

BK601 / BK605 / BK605U
Charging Post / Adapters

- The two arms make it E-Z to install and remove.
- BK601 is a one size fits all (Universal) 3/8" -16 thread size.
- Used for charging, testing or as an adapter.
- BK605 / BK605U fits the 3/8" -16 threaded stud on a group 31 battery.
- Warranty code ND



MADE IN USA

POWERMASTER

**KS1272P-B / KS1272PT-B /
KS1272PCLP-B / KS1272PTCLP-B**
120 V AC Series Charger / Timer /Clips / Cups

- Charge rate: 0 to 8 amps
- Maximum charging capacity: 72 cells in series (12 twelve volt batteries)
- Input: 120 volts 50/60 hertz
- Output: 0-140 volts DC
- Max output capacity: 8 amps
- Max KVA: 1.40
- Warranty code L1Y



MADE IN USA

POWERMASTER

KS1440PTCLP-B
240 V AC Series Charger / Timer /Clips

- Charge rate: 0 to 8 amps
- Maximum charging capacity: 144 cells in series (24 - twelve volt batteries or 48 - six volt batteries)
- Input: 240 volts 50/60 hertz
- Output: 0-280 volts DC
- Max output capacity: 8 amps
- Max KVA: 2.6
- Warranty code L1Y



Rectifier
01306 (1272-B Series)
01304 (KS1440PTCLP-B)



10 amp breaker
01296 (1272-B Series)



Polarity Board
00567 (1272-B Series)
00571 (KS1440PTCLP-B)



10 Ga. Output Leads
01034 (Red, Clip)
01035 (Black, Clip)
00709 (Red, Cup)
00710 (Black, Cup)

POWERMASTER

REPLACEMENT PARTS
240 V AC Series Charger / Timer /Clips
120 V AC Series Charger / Timer /Clips / Cups

- These are the most common parts for replacement for our series chargers.
- Warranty code ND



Amp Meter
00520 (All)



10 amp breaker
01298 (All)



10 amp breaker
01298 (All)



Timer
00525 (All)



Transformer Brush
00771 (KS1272P-B)
00559 (KS1440PTCLP-B)

Transformer
00540 (KS1272P-B)
00535 (KS1440PTCLP-B)



MS69P

00504

FABD25

000501


BIC-CORD

MS4000
Super Memory Saver

- NOW WITH BUILT IN CHARGER
- Direct wired OBDII Connector
- 12 volt 4.5 amp hour sealed lead acid battery
- Power on / power off switch
- Protected by a 4 amp circuit breaker
- Saves all codes and settings when disconnecting a vehicle's battery
- Warranty code L1Y


Also protects settings and codes for:

- Anti-theft radios • Clocks • Key-less entry systems
- Alarms • Cell phone settings • GPS memory
- TPMS • Other memory related functions



MSBD28
CLA to OBDII Hi-Vis 8' Cord

- Prevents the loss of electronic memory when disconnecting the vehicle's battery
- High visibility coiled cord stretches to 8'
- Easy storage in tool box
- OBDII connection uses positive and ground pins only, will not interfere with fault codes
- Coiled cord prevents tangles
- Includes in-line fuse in the cigarette lighter input
- Replacement 5amp fast blow fuse not included
- Warranty code L90



BMK1914
7 Piece Battery Maintenance Kit

This kit includes everything for cleaning and maintaining battery terminals

- BK541 4-in-1 Battery Terminal Cleaner
- BK703 5/16" Side Terminal Ratchet
- BK708 10mm Side Terminal Ratchet
- BK705 XL 5/16" Side Terminal Ratchet
- BK725 Battery Pliers
- BK720IM Battery Terminal Spreader / Cleaner
- BK706 Battery Terminal Puller
- Warranty code L90



B7946
3 Point Copper Terminal Crimper

- Crimps terminal ends to cables
- 8 gauge to 4/0 AWG cable sizes
- 3/8" drive holding fixtures, top and bottom
- Portable, compact - no need for a hammer
- Designed for 3/8" cordless or impact tools
- Crimps cables right on the vehicle
- Great for stereo installs and hard to reach places like under dashboards
- Hardened drive screw for precise crimps
- Warranty Code LIY



B790C
Hammer Indent Crimper

- Spring loaded pin
- Compact and Lightweight
- 8 gauge to 4/0 AWG
- Made from cast steel
- Warranty code L90



B795
Heavy-Duty Lug Crimper

- Exerts equal pressure on all contact points
- 50 different crimp settings
- No dies to replace or mis-align
- 6 gauge through approximately 5/8" cable
- Warranty code L90



793CS
Adjustable Battery Cable Stripper

- Adjustable blade
- Strips insulation jacket from cable, 8 gauge to 4/0 AWG
- Made from ABS and hardened steel
- Impact resistant
- Ergonomic grip ensures firm hold
- Warranty code L90



B798
Heavy-Duty Copper Cable Cutters

- Cuts cable up to 3/4" in diameter
- 14" handle length
- Carbon steel blades
- Insulated handle
- Not for solid copper or steel, strand copper only
- Warranty code L90

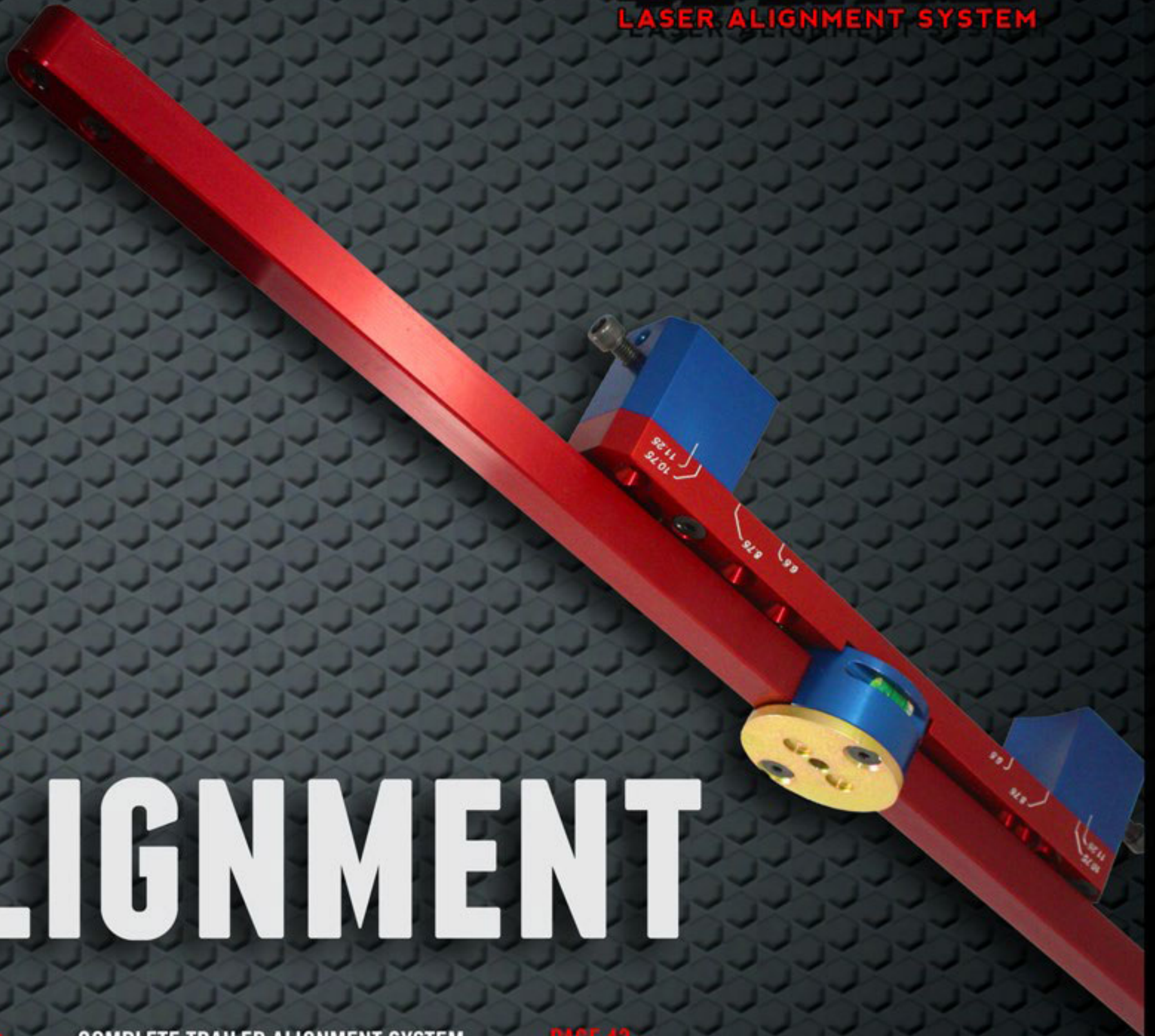


B796
9" Cutters
Copper Cable/Wire

- Cuts wire and cable up to 2/0 gauge
- Store in any tool box
- Insulated handles
- Great gas line cutting too
- Not for solid copper or steel, Strand copper only
- Warranty code L90



EZ LINE
LASER ALIGNMENT SYSTEM



LASER

ALIGNMENT

EZLINE

COMPLETE TRAILER ALIGNMENT SYSTEM

PAGE 42

EZLINEBTSW

COMPLETE TRACTOR TRAILER ALIGNMENT SYSTEM

PAGE 42

MORE

ACCESSORIES

PAGE 42

E
Z
L
I
N
E

Tools and equipment for automotive technicians and battery specialists



EZLINE
Complete Trailer Alignment System

- For 18 wheelers, RV's, commercial vehicles and trailers.
- Works with 95% of vehicles 2 1/2 tons and higher.
- Precise axle & wheel alignment
- All measurements can be made quickly
- Multipurpose measurement capabilities
- Compact design
- Can align a fully loaded vehicle
- Aligns drop and tag axles.

Includes: 4 lasers, 2 fifth wheel pin adapters, and tape measure. Packaged in a blow-molded case.



EZLINEB1SW
Complete Trailer Alignment System

- For 18 wheelers, RV's, commercial vehicles and trailers.
- Works with 95% of vehicles 2 1/2 tons and higher.
- Precise axle & wheel alignment
- All measurements can be made quickly
- Multipurpose measurement capabilities
- Compact design
- Can align a fully loaded vehicle
- Aligns drop and tag axles.

Includes: 4 lasers, 2 fifth wheel pin adapters, 2 drive wheel adapters, two steer wheel bars, tape measure, and software package. Packaged in a blow-molded case.



EZSSS
4 – Spacers designed to accommodate super single wheels.



EZLDWA
2 – Drive wheel adapters designed to accommodate drive axle wheels that have automatic tire self-inflation systems.

FULL PARTS LIST
EZLINE Alignment Systems

Part #	Description
EZLINE	EZ Line Laser Trailer Alignment Kit
EZLINEB1SW	Basic EZLINE Package with Software
EZLDWA	U-Shaped Drive Wheel Adaptors (2)
EZLSSS	Super Single Spacers (4)
EZLBUS	Coach Bus Front Bar Adapters
EZLINEIL	Individual Laser
EZLINEHA	Hub Adapter Kit (2)
EZLINEPA	Fifth Wheel Pin Adapter
EZLINESW	Software
EZLINETP	Tape Measure

**THANK YOU
FROM THE E-Z RED CREW**



THE JOBBER WAGON.

Tools and equipment for automotive technicians and battery specialists

WEIGHTS AND DIMENSIONS

P/N	L	W	H	Wt. lb.	MP	P/N	L	W	H	Wt. lb.	MP
412SS	13.00"	4.00"	1.75"	2.00	12	BK706	3.00"	1.20"	4.00"	0.60	10
4S12L	12.25"	0.75"	0.25"	1.50	100	BK708	5.50"	0.75"	0.25"	0.25	10
4S04	4.50"	1.00"	0.15"	0.18	100	BK720IM	6.50"	3.75"	1.50"	0.50	12
4S38L	12.00"	1.50"	1.00"	0.35	50	BK725	7.50"	1.50"	0.50"	0.50	10
4S3XL	13"	1"	1"	.90		BK919	2.25"	2.25"	9.00"	0.20	10
4S12XL	12.00"	0.75"	0.75"	0.35	100	BMK1914	11.50"	4.50"	3.00"	3.00	10
4S04XL	4.5"	.5"	.5"	.25		BT104	11.75"	5.75"	4.50"	2.75	10
4S08XL	8"	.75	.75	.30		EZ612	8.25"	4.25"	1.50"	0.25	10
502	2.86"	1.83"	1.83"	0.20	200	EZLINE	13.00"	11.00"	3.00"	5.00	1
505BT	2.64"	1.83"	1.83"	0.10	250	EZLINEB1SW	51.00"	15.00"	8.00"	35.00	1
505BTSSHQD	2.50"	1.63"	1.63"	0.10	250	FABD25	5.00"	5.00"	0.25"	0.25	10
505JP	2.64"	1.83"	1.83"	0.10	250	H240	9.00"	8.00"	1.75"	3.00	10
505JPN	2.64"	1.83"	1.83"	0.10	250	HC001	11.50"	4.50"	3.00"	3.00	5
505N	2.64"	1.83"	1.83"	0.10	250	HH1000	25.50"	3.50"	1.50"	1.00	10
505NSSHQD	2.50"	1.63"	1.63"	0.10	250	HH40	25.50"	3.50"	1.00"	0.50	15
505ST	2.64"	1.83"	1.83"	0.10	250	HLS1000	7.50"	4.00"	1.50"	1.00	20
505STSSHQD	2.50"	1.63"	1.63"	0.10	250	HS34	11.50"	7.50"	1.50"	1.00	20
506	2.25"	1.07"	1.07"	0.10	500	KS1272P-B	11.00"	6.00"	8.50"	20.00	1
506CO	1.87"	1.07"	1.07"	0.10	500	KS1272PCLP-B	11.00"	6.00"	8.50"	20.00	1
506COSSHQD	2.14"	1.07"	1.07"	0.10	500	KS1272PT-B	11.00"	6.00"	8.50"	20.00	1
507BT	2.86"	1.83"	1.83"	0.20	200	KS1272PTCLP-B	11.00"	6.00"	8.50"	20.00	1
507ST	2.86"	1.83"	1.83"	0.20	200	KS1440PTCLP-B	11.00"	6.00"	9.00"	30.00	1
509	1.87"	1.07"	1.07"	0.10	500	KS1612	10.00"	10.00"	9.00"	8.75	1
509SSHQD	2.14"	1.07"	1.07"	0.10	500	KWP2	9.00"	8.00"	1.00"	1.50	20
77239	6.00"	1.75"	0.75"	0.25	100	MM36	22.00"	3.00"	1.00"	0.30	25
B108	8.50"	4.00"	2.50"	0.80	20	MM38	22.00"	3.00"	1.50"	0.35	25
B110	12.00"	7.00"	4.00"	3.00	10	MMS14	5.00"	1.75"	1.50"	0.70	40
B790C	4.50"	3.00"	2.50"	2.00	10	MR12	12.00"	2.00"	2.00"	2.14	20
B7946	4.50"	4.00"	3.00"	2.50	10	MR1224FL	22.00"	1.75"	2.00"	3.25	12
B795	25.00"	3.50"	3.50"	6.00	6	MR12FL	13.78"	2.00"	2.00"	2.40	20
B796	9.00"	3.00"	1.00"	0.75	20	MR12XLC	22.00"	1.75"	2.00"	3.25"	12
B798	17.00"	5.50"	1.50"	2.00	10	MR14	7.00"	1.50"	1.50"	0.50	10
B901	10.00"	9.00"	5.00"	0.35	10	MR1412FL	10.82"	1.00"	1.25"	0.50	25
B901N	3.50"	2.00"	2.00"	0.10	10	MR14FL	6.89"	1.25"	1.25"	0.50	10
BK101	9.50"	2.50"	1.50	0.20	50	MR1438FL	18.00"	1.75"	1.75"	2.40	20
BK102	14.00"	2.50"	1.50"	0.20	50	MR14XLC	9.06"	1.25"	1.25"	0.60	20
BK201	18.00"	1.00"	0.75"	0.30	200	MR1X	25.25"	2.75"	3.00"	12.85	4
BK260	20.50"	2.00"	0.50"	0.10	200	MR34	25.00"	2.50"	2.50"	9.50	4
BK501	4.50"	1.50"	1.50"	0.10	25	MR3818FL	16.73"	1.50"	1.50"	1.80	20
BK50112PCK	9.50"	8.50"	6.00"	2.25	10	MR38FL	9.84"	1.50"	1.50"	1.20	40
BK503	3.00"	3.00"	1.25"	0.20	25	MR38	9.00"	1.50"	1.50"	1.00	40
BK504	4.00"	1.50"	1.50"	0.10	25	MR38XLC	16.00"	1.50"	1.50"	1.60	20
BK50412PCK	9.50"	8.50"	6.00"	2.25	10	MR482	14.25"	2.75"	2.75"	3.80	10
BK516	1.25"	1.07"	1.07"	0.09	1	MR482FL	15.75"	2.75"	2.75"	4.50	10
BK51620PCK	7.00"	4.00"	6.00"	1.25	1	MR482XLC	24.00"	1.75"	1.75"	5.00	8
BK520	9.00"	6.00"	3.00"	1.25	10	MS1300	13.00"	1.00"	1.00"	0.25	10
BK530	9.00"	6.50"	1.25"	0.75	40	MS1900	21.00"	3.00"	1.00"	0.25	50
BK534QD	2.50"	1.00"	1.00"	0.10	500	MS3000	14.00"	5.00"	2.00"	1.25	12
BK541	3.75"	3.00"	1.25"	0.20	25	MS400	4.00"	1.50"	0.25"	0.10	10
BK54112PCK	9.50"	8.50"	6.00"	2.00	10	MS40020PCK	6.75"	6.50"	4.25"	1.80	10
BK550	15.00"	6.00"	1.00"	1.75	10	MS4000	13.00"	5.75"	3.50"	6.00	8
BK560	14.00"	1.00"	1.00"	0.25	20	MS4000C	13.00"	5.75"	3.50"	6.00	8
BK601	1.50"	1.25"	0.75"	0.20	200	MS600	6.00"	1.50"	2.00"	0.50	10
BK605N	0.75"	1.50"	1.75"	0.20	100	MS800	8.00"	1.50"	2.00"	0.70	10
BK605P	0.75"	1.50"	1.75"	0.20	100	MS60010PCK	8.75"	4.00"	4.00"	1.20	10
BK605U	2.00"	0.75"	0.75"	0.20	100	MSBD28	8.00"	4.00"	0.50"	6.00	20
BK703	5.00"	1.00"	0.50"	0.20	10	NR5M	20.25"	9.25"	1.25"	4.80	10
BK705	9.50"	1.00"	0.50"	0.40	10	NRM810	9.50"	0.75"	0.50"	0.40	10
						NRM1214	12.75"	1.12"	0.60"	0.70	10

Tools and equipment for automotive technicians and battery specialists

WEIGHTS AND DIMENSIONS



INNOVATIVE PRODUCTS SINCE 1966

P/N	L	W	H	Wt. lb.	MP	P/N	L	W	H	Wt. lb.	MP
NRM1315.....	14.25"	1.25"	0.50"	0.75	10	WRM1315.....	14.25"	1.25"	0.50"	0.75	10
NRM1618.....	16.75"	1.37"	0.75"	1.10	10	WRM1618.....	16.75"	1.37"	0.75"	1.10	10
NRM1719.....	16.75"	1.37"	0.75"	1.10	10	WRM1719.....	16.75"	1.37"	0.75"	1.10	10
PCOB.....	9.75"	3.75"	1.50"	0.25	72	WR4SL.....	22.00"	8.00"	1.00"	4.15	10
PCOB12PK.....	7.50"	7.50"	7.00"	2.50	8	WRS51638.....	9.50"	0.75"	0.50"	0.40	10
PCUV6.....	10.00"	4.75"	1.50"	0.25	72	WRS71612.....	12.75"	1.12"	0.60"	0.75	10
PG5.....	11.25"	4.50"	0.50"	0.70	40	WRS91658.....	16.75"	1.37"	0.75"	1.10	10
PL175CF.....	10.00"	4.50"	1.50"	0.32	48	WRS111658.....	16.75"	1.37"	0.75"	1.10	10
PL175G.....	10.00"	4.50"	1.50"	0.32	48	XL3300.....	14.50"	3.50"	3.00"	1.50	20
PL1750.....	10.00"	4.50"	1.50"	0.32	48	XL3300FL-B.....	14.50"	3.50"	3.00"	1.50	20
PL175R.....	10.00"	4.50"	1.50"	0.32	48	XL3300FL-G.....	14.50"	3.50"	3.00"	1.50	20
PP12PK.....	7.00"	6.00"	4.50"	1.25	12	XL3300FL-O.....	14.50"	3.50"	3.00"	1.50	20
PV6.....	4.25"	2.50"	0.75"	0.10	10	XL3300FL-P.....	14.50"	3.50"	3.00"	1.50	20
PV8.....	4.25"	2.50"	0.75"	0.10	10	XL334PK.....	13.50"	7.50"	5.00"	6.00	5
PU6.....	4.25"	2.50"	0.75"	0.10	10	XLUHLS.....	9.00"	8.00"	6.50"	2.45	8
PU8.....	4.25"	2.50"	0.75"	0.10	10						
PU6L.....	4.25"	2.50"	0.75"	0.10	10						
PU8L.....	4.25"	2.50"	0.75"	0.10	10						
PW6.....	4.25"	2.50"	0.75"	0.10	10						
PW8.....	4.25"	2.50"	0.75"	0.10	10						
S104.....	11.00"	4.50"	1.50"	0.25	25						
S500.....	9.00"	4.00"	1.00"	0.20	25						
S501.....	6.00"	3.00"	4.00"	0.25	10						
S503.....	5.50"	3.75"	1.00"	0.15	10						
S504.....	6.50"	3.00"	4.00"	0.25	10						
S520.....	9.50"	8.50"	3.00"	1.25	10						
S530.....	9.00"	9.00"	1.50"	0.75	10						
S560.....	1.50"	4.00"	1.50"	0.20	10						
S541.....	6.00"	3.50"	1.50"	0.25	10						
S919.....	2.50"	4.50"	13.50"	0.25	10						
S929.....	9.00"	5.00"	1.00"	0.20	10						
S929ADP.....	4.50"	2.25"	0.50"	0.05	10						
SD3.....	5.25"	2.65"	1.00"	0.10	10						
SHM14.....	5.00"	6.00"	1.25"	0.36	20						
SHM38.....	5.00"	6.00"	1.25"	0.36	20						
SHS14.....	5.00"	6.00"	1.25"	0.36	20						
SHS38.....	5.00"	6.00"	1.25"	0.36	20						
SL1350.....	9.75"	3.75"	1.75"	0.22	12						
SL3350.....	13.00"	3.75"	2.50"	1.18	20						
SP101.....	11.00"	4.50"	1.50"	0.25	25						
SP102.....	11.00"	4.50"	1.50"	0.25	25						
SP516.....	3.00"	2.00"	1.25"	0.05	10						
SP516R.....	9.00"	3.00"	1.00"	0.40	10						
SWMM36.....	22.25"	3.00"	1.00"	0.75	25						
T1000.....	7.50"	4.00"	1.50"	1.00	20						
TBL200.....	16.50"	3.00"	2.25"	1.00	20						
TF120.....	11.00"	5.75"	1.50"	0.38	10						
TF120B.....	11.00"	5.75"	1.50"	0.38	10						
TF120R.....	11.00"	5.75"	1.50"	0.38	10						
WM396.....	4.00"	4.00"	1.50"	0.75	10						
WR1500.....	17.50"	3.00"	1.25"	1.00	25						
WR1500B.....	17.50"	3.00"	1.25"	1.00	25						
WR1500G.....	17.50"	3.00"	1.25"	1.00	25						
WR2400.....	26.75"	2.75"	1.50"	1.55	20						
WR2400B.....	26.75"	2.75"	1.50"	1.55	20						
WR5ML.....	20.25"	9.25"	1.25"	4.80	10						
WRM810.....	9.50"	0.75"	0.50"	0.40	10						
WRM1214.....	12.75"	1.12"	0.60"	0.70	10						

Tools and equipment for automotive technicians and battery specialists

412SS.....	4S04/4S12L combo socket set-33 pc.....	16	EZLINEB1SW.....	Complete Trailer Alignment System.....	42	SD3.....	3 Pc Bit Set Square Adapter.....	21
4S12L.....	1/4" Stick Combination Drive Locking.....	14	FABD25.....	OBD2 to CCLA cord.....	39	SHM14.....	1/4" Drive Metric Socket Holder.....	17
4S04.....	1/4" Stick Combination Drive-STUBBY.....	14	HC001.....	Cordless Hot Repair Kit.....	17	SHM38.....	3/8" Drive Metric Socket Holder.....	17
4S38L.....	1/4-3/8 Stick Combination.....	14	HH1000.....	Monster Hood holder.....	19	SHS14.....	1/4" Drive Standard Socket Holder.....	17
4S3XL.....	3 Piece Quarter Stick Set.....	15	HH40.....	Hood Prop.....	19	SHS38.....	3/8" Drive Standard Socket Holder.....	17
4S12XL.....	1/4" Stick Combination Drive.....	14	HLS1000.....	12 Piece SAE Hex Bit Set.....	21	SL1350.....	Pocket Sunlight.....	3
4S04XL.....	Stubby Quarter Stick.....	15	HS34.....	Heat Shrink Tube Set 235 pieces.....	21	SL3350.....	Sunlight Rechargeable Worklight.....	3
4S08XL.....	8" Quarter Stick.....	15	KS1272P-B.....	120V AC 8 amp Battery charger (cup).....	38	SP101.....	Battery Hydrometer.....	6
502.....	Bi-Level Marine.....	31	KS1272PCLP-B.....	120V AC 8 amp Battery charger (clip).....	38	SP102.....	Anti Freeze Hydrometer.....	6
505BT.....	Bent Tooth.....	26	KS1272PT-B.....	120V AC 8 amp with 12hr timer (cup).....	38	SP516.....	Side Terminal Cleaner.....	29
505BTSSHQD.....	Bent Tooth Steel Shaft, QD.....	26	KS1272PTCLP-B.....	120V AC 8 amp with 12hr timer (clip).....	38	SP516R.....	Side Terminal Cleaner w/Ratchet.....	29
505JP.....	Japanese Battery Post.....	26	KS1440PTCLP-B.....	240 V AC Series Charger / Timer /Clips.....	38	SWMM36.....	Swivel Magnet.....	19
505JPN.....	JIS Battery Post.....	27	KS1612.....	250 Amp Load Tester.....	32	T1000.....	Torx Bit Set.....	21
505N.....	Negative Post (Black).....	27	KWP2.....	2 Piece Kiwi Pliers Set.....	18	TF120.....	Rechargeable Pen Light - Black.....	3
505NSSHQD.....	Negative Steel Shaft.....	27	MM36.....	Monster Magnet.....	19	TF120B.....	Rechargeable Pen Light - Blue.....	3
505ST.....	Straight Tooth.....	26	MM38.....	Super Monster Magnet.....	19	TF120R.....	Rechargeable Pen Light - Red.....	3
505STSSHQD.....	Straight Tooth Steel Shaft, QD.....	26	MMS14.....	1/4" Mini Master Set in Roll-up Pouch.....	16	WM396.....	Super Wrist Mag 1 - 499.....	18
506.....	S/T Battery Cleaning Brush.....	31	MR12.....	1/2 inch Drive Extendable.....	8	WR1500.....	Magnetic Wrench Rack - Red.....	17
506CO.....	Group 31 Battery Post.....	31	MR1224FL.....	1/2" Drive locking Flex Head 22" long.....	10	WR1500B.....	Magnetic Wrench Rack - Blue.....	17
506COSSHQD.....	Group 31 Battery Post Steel Shaft.....	31	MR12FL.....	1/2" Drive Locking Flex Head Extendable.....	10	WR1500G.....	Magnetic Wrench Rack - Green.....	17
507BT.....	Commercial Post Bent Tooth.....	31	MR12XLC.....	1/2 " Drive x 22" long Ratchet.....	8	WR2400.....	Magnetic Wrench Rack - RED.....	17
507ST.....	Commercial Post Straight Tooth.....	31	MR14.....	1/4 inch Drive Extendable Ratchet.....	8	WR2400B.....	Magnetic Wrench Rack - BLUE.....	17
509.....	Utility Buffer.....	31	MR1412FL.....	1/4" Locking flex head.....	10	WR4SL.....	4 Piece SAE Wrench Set Locking.....	22
509SSHQD.....	Utility Buffer Steel Shaft, QD.....	31	MR14FL.....	1/4" Drive Locking Flex Head Extendable.....	11	WR5ML.....	5 Piece Metric Wrench Set Locking.....	22
793CS.....	Cable Stripper.....	40	MR1438FL.....	2 pc set-locking.....	8	XL3300.....	COB EXTREME WORK LIGHT.....	3
B108.....	Handheld Refractometer.....	33	MR14XLC.....	1/4" Drive X 9.06" Non Flex.....	8	XL3300FL-B.....	NEW COB Extreme light - Blue.....	3
B1100.....	Battery Load Tester.....	32	MR1X.....	1" Drive Extendable Ratchet.....	8	XL3300FL-G.....	NEW COB Extreme light - Green.....	3
B790C.....	Hammer Indent Tool.....	40	MR34.....	3/4 inch Drive Extendable Ratchet.....	10	XL3300FL-O.....	NEW COB Extreme light - Orange.....	3
B7946.....	3 Point Crimper.....	40	MR3818FL.....	3/8" Drive X 17" long locking Flex Head.....	10	XL3300FL-P.....	NEW COB Extreme Light - Pink.....	3
B795.....	Heavy Duty Crimping Tool.....	40	MR38FL.....	3/8" Drive Locking Flex Head Extendable.....	10	XL334PK.....	NEW COB ExtremePack.....	3
B796.....	Nine Inch Cable/ Wire Cutters.....	40	MR38.....	3/8 inch Drive Extendable.....	8	XLUHLS.....	Underhood Clamp Light System.....	2
B798.....	Heavy Duty Cable Cutters.....	40	MR38XLC.....	3/8" Drive x 16" Non Flex.....	8			
B901.....	2 1/4 Quart Battery Filler.....	35	MR482.....	MR14, MR382, & MR12 Set.....	8			
BK201.....	Top Post Formation Jumpers.....	37	MR482FL.....	Flex Head Ratchet/locking.....	10			
BK260.....	Clip Jumpers.....	37	MR482XLC.....	3 Pc Ratchet set Xtra Long.....	8			
BK501.....	Top Post Terminal Cleaner.....	28	MS1300.....	13 Inch Monster Scraper.....	20			
BK50112PCK.....	Jar of 12 501 Cleaners.....	28	MS1900.....	19 Inch Monster Scraper.....	20			
BK503.....	Battery Post Shaper.....	28	MS3000.....	Monster Scraper Kit.....	20			
BK504.....	Battery Post Shaper.....	28	MS400.....	4 Inch Monster Scraper.....	20			
BK50412PCK.....	Jar of 12 Battery Post Shaper.....	28	MS40020PCK.....	Jar of 20 MS400 Scrapers.....	20			
BK516.....	Side Terminal Cleaner.....	29	MS4000.....	Automotive Memory Saver.....	39			
BK51620PCK.....	Jar of 20 S/T Cleaners.....	34	MS600.....	6 Inch Monster Scraper.....	20			
BK520.....	Side Battery Lifter.....	34	MS60010PK.....	Jar of 10 MS600.....	20			
BK530.....	The Gripper Battery Lifter.....	34	MSBD28.....	Memory Saver/CLA to OBD2.....	39			
BK534QD.....	3/4" Power Drill Brush QD.....	29	NR5M.....	5 Pc Metric Flex Head Wrenches.....	22			
BK541.....	Four in One Battery Post Cleaner.....	29	PCOB.....	Pocket COB Light Stick 12PK.....	4			
BK54112PCK.....	Jar of 12 4 in 1 Cleaners.....	29	PCOB12PK.....	Pocket COB 12PK.....	4			
BK550.....	Super Gripper Battery Lifter.....	34	PG5.....	5 IN 1 Pistol Grip Plier.....	18			
BK560.....	Strp Deep Cycle Battery Carrier.....	34	PL175CF.....	Rechargeable Slim Light - Carbon Fiber.....	4			
BK601.....	S/T Charging Post/ Adapter.....	37	PL175G.....	Rechargeable Slim Light - Green.....	4			
BK605N.....	Charge Post/Adapter Negative.....	37	PL175O.....	Rechargeable Slim Light - Orange.....	4			
BK605P.....	Charge Post/Adapter Positive.....	37	PL175R.....	Rechargeable Slim Light - Red.....	4			
BK605U.....	Universal Grp 31 Chrg Post.....	37	PP12PK.....	Post Cleaner kit.....	30			
BK703.....	Side Terminal Wrench.....	36	S104.....	Windshield Washer Hydrometer.....	6			
BK705.....	Side Terminal Wrench.....	36	S501.....	Top Post/Terminal cleaner.....	28			
BK706.....	Battery Terminal Puller.....	36	S503.....	Top Post/Terminal cleaner.....	28			
BK708.....	10 MM Wrench - Short Handle.....	36	S504.....	Top Post/Terminal cleaner.....	28			
BK720IM.....	Battery Terminal Spreader.....	36	S520.....	Side Lifter.....	34			
BK725.....	Angle Nose Battery Pliers.....	36	S530.....	Gripper.....	34			
BK919.....	Bulb Type Battery Filler.....	35	S541.....	4 in 1 Cleaning Tool.....	34			
BMK1914.....	Battery Maintenance Kit.....	36	S560.....	Strap Deep Cycle Battery Carrier.....	34			
BT104.....	125 Amp Load Tester.....	32	S919.....	Battery Filler.....	35			
EZ612.....	Digital Volt Meter 4.99 to 19.99 V.....	33	S929.....	Dry Charge Battery Filler.....	35			
EZLINE.....	EZ Line Laser Alignment Tool Kit.....	42	S929ADP.....	Motorcycle Battery Adapter.....	34			



CAT® LIGHTS



E-Z RED Company, an official licensee of Caterpillar Inc. and a leader in lighting and battery products since 1966. E-Z RED is a family owned and operated company that stands behind its reputation for quality products.

We take great pride and responsibility in maintaining the values, integrity and reputation of the Cat Brand by producing superior products for both professional and home use.



Check out an excellent selection of hand tools we offer on our website.