



TC-6 TIRE CARRIER

Install Manual



Estimated install time - Approx. 30min -1 hour. Difficulty Level: EASY



1. Start from inside the tailgate door, remove the vent. The vent is held on by two snap-in clips on the left side. Pull out, on the left side, using your hand or a tool to pry. Disconnect the plug directly inside.



2. The tire carrier will come off by unbolting the eight 14mm bolts holding on the carrier to the tailgate. Pull out the wire and plug from the tailgate door. Just have to pinch and pull out.



3. Apply the new foam seal to the new tail gate plate.



4. Attach the new tailgate plate using the factory hardware. Torque the bolts to 15lbs. Make sure the plate orientation is the same as pictured.



4. Pry out the rubber plug from the top of the passenger side (right) of the RS-10 or RS-11 bumper. Drop in the new axle, tapered side down thru the hole. Spin on one of the new large nylock nuts with one of the large washers between it. You wont be tightening till you have the carrier on.



5. Slide on one of the new sealed bearings over the axle and follow that with the tire carrier and the second sealed bearing. Note: Be careful letting go of the tire carrier as it can swing around and hit the Jeep.



6. Drop the new washer on top of the second bearing and spin on the large nylock nut. In order to tighten the carrier you will be tightening both the top and bottom of the axle shaft at the same time. You can use a socket for the top but will need a wrench for the bottom nut. Note: Hand tighten only!



7. Bolt in the composite "U" shaped piece on to the tailgate plate using supplied nuts, bolts, washers and split-washers. Firmly hand-tighten.



8. Locate the bracket and hardware shown in the picture.



9. Install bracket on to the tire carrier. This bracket will line up with the “U” shaped spot on the tailgate plate. To line up, loosely bolt up the bracket and close tailgate. Tighten the bracket once you aligned it with the “U” shaped area of the tailgate. Hand tighten only.



10. Locate the heimed rod ends and hardware shown in picture.



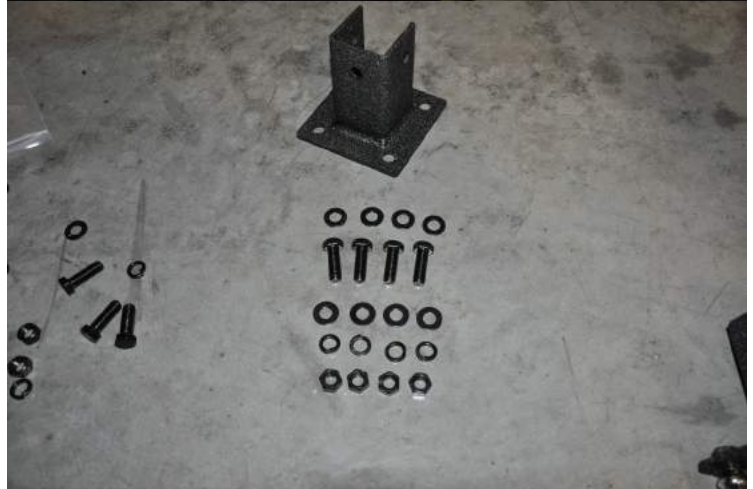
11. Screw the heims together and bolt the female end to the carrier. To set the other end length, close the tailgate and tire carrier. Rotate the male end of the heim to lengthen or shorten to line up with the bracket on the tailgate plate like shown in picture. Open tailgate and rotate the male end of heim 1/2 turn tighter and bolt up to tail gate bracket. Torque bolts for heims to 20lbs.



12. Install the new rubber cap over the axle bolt bearing area on tire carrier. This piece will help keep the bearing clean and smooth.



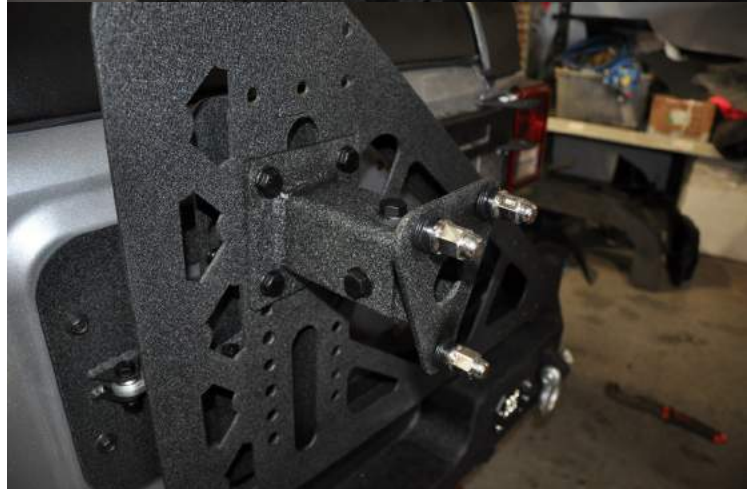
13. Locate the spare tire inner mounting bracket and nuts and bolts for it. See picture.



14. Bolt to the outside of the tire carrier. In order to make sure your tire will clear the bumper use a helper to lift spare tire up to see how far up to mount the bracket. Torque the bolts to 25lbs. Note: To minimize shaking you want the spare to be at the lowest level necessary to clear the bumper.



15. Bolt the outer portion of the spare bracket to the inner part. Keep the bolts a little loose. With the outer all the way extended, place the spare on it and push tire till tire touches the carrier. Remove tire. Slide outer part of bracket in extra 1/4 inch and torque bolts to 40lbs. Re-install tire using the lug nuts supplied with our kit. Torque to 50lbs.



16. Open and close and tighten the heim in 1/2 increments to get the snug fit you're looking for. Note: You may use your lug nuts as long as you verify that they are the same thread pitch as the mounting bracket.

17. Tighten all bolts that you previously left hand tight and you are finished!



Check out a selection of spare tire covers and carriers offered in our online store.