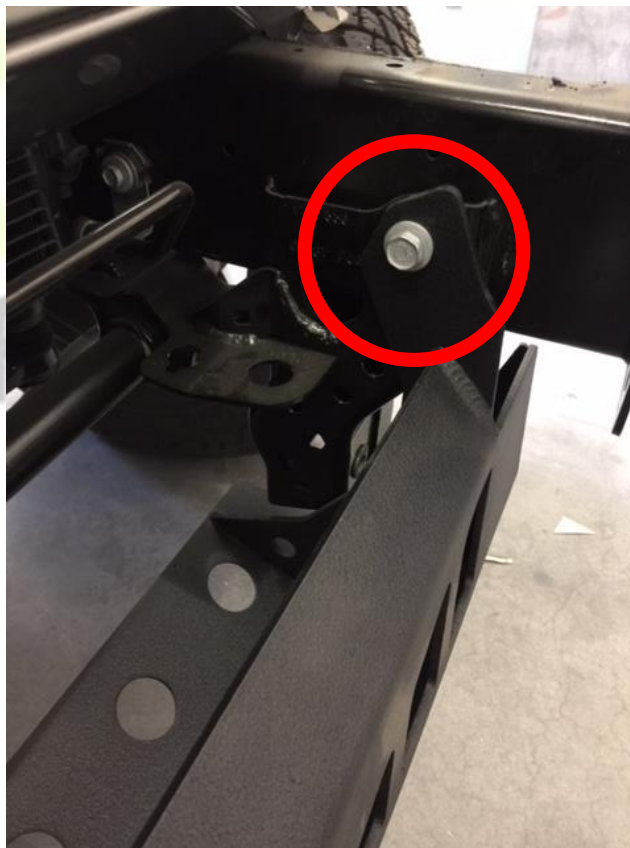




SPJL-01 JL Skid Plate Installation Instructions

The DV8 Offroad SPJL-01 skid plate is a nice addition to the front of your JL that will add much needed protection to the underside of the front of the Jeep, also on Rubicon models, protection for the electronic sway bar disconnect motor.

- For Installation, first you will remove the stock skid plate on the underside of your JL along with any plastic fasteners.
- Using stock bolts, hang the skid plate on the top most bolt hole with one bolt on each side as pictured below.



- With the skid plate at a slight angle, you should be able to place the nut plate on the inside of the frame on each side, allowing you to place the last two bolts on each side. See below.



NOTE: Some JLs will not need the nut plates since the two holes will be threaded from the factory.