



DV8 Hard Top INSTALL INSTRUCTIONS

Parts List:

- Hard Top Front "Targa" Section (1)
- Hardtop Rear Section (1)
- Rear and Side Windows (1 of each)
- Rear Window Hardware (1)
- Corner Door Seal (2)
- Rear Section Upper Bolt (2)
- Flat Washer (6)
- Footman Loop (2)
- Mounting Nut
- 5/16" x 1" Mounting Bolts (6)

READ INSTRUCTIONS ENTIRELY BEFORE INSTALLING PRODUCT

1. Remove the factory top. If the vehicle is equipped with a soft top remove the soft top, all hardware, and brackets. Check all seals to ensure that they are not cracked and do not contain signs of wear
2. Place the rear section of the hard top onto the Jeep and line it up with the holes in the tub for the factory hard top, loosely attach to the tub at the 6 mounting points using the 5/16" x 1" mounting bolts, flat washers, and the mounting nuts. You can also use the factory hardware if you prefer. **Do not tighten.**



Fig 1



Fig 2

3. Install the rear section upper bolt shown in Fig 3 and tighten. These two bolts are located where the Targa installs over the B pillar. (4 Door Only)

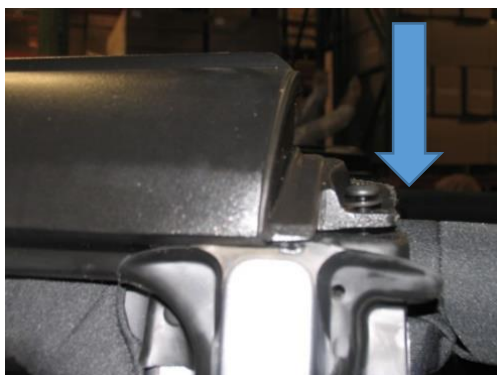


Fig 3

4. Make sure that the top is aligned evenly on the Jeep. Comparing the distances at the seal with back of the rear door jam shown in figure 4. Make sure that the seal lines up with the top. Tighten the 6 bolts on the tub in a star pattern (Fig 5) while an assistant ensures that the top remains in position, you may need to push on the top like in figure 4 to get it into position.



Fig 4

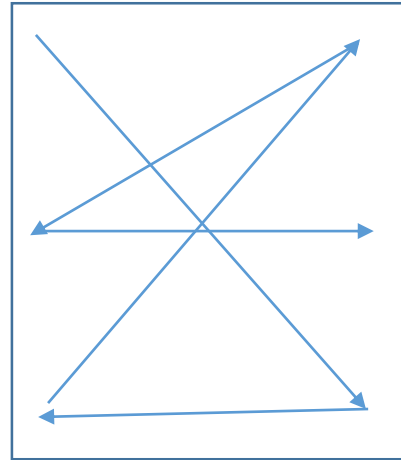


Fig 5

5. Pull the sun visors out of the way and remove the factory footman loops from the windshield channel using a #25 torx bit. (Fig 6)



Fig 6



Fig 7

6. Reinstall the new included footman loops reusing the factory hardware (Fig 7)
7. Place the front "Targa" portion of the top onto the Jeep and loosely in position making sure to untuck the rear seal into proper position on both sides. (Fig 8)



Fig 8

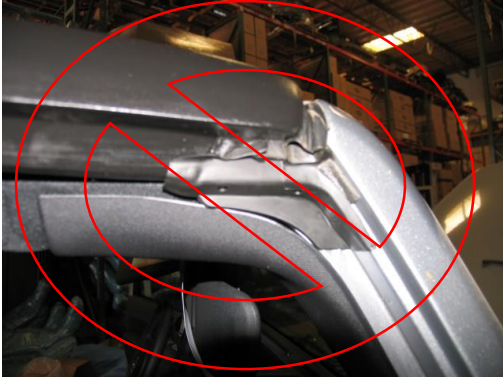


Fig 9



Fig 10

8. Be sure to push the front seals into position and make sure that they are not tucked under the top. (Fig 9 & 10) (Fig 9 Incorrect Fig 10 correct)
9. Pull down on the Targa as you connect the J-hooks to the footman loops adjusting them as necessary to create a firm fit. Connect the rear J hooks first and then the front J-hooks. (Fig 11 & 12)

Note: Do not overtighten the J-hooks if you overtighten these you risk pulling the hook out of the fiberglass.



Fig 11



Fig 12

10. Look at the top of the hard top and make sure that the seals are aligned and that all of the seals seem evenly compressed. If the seals are not even, loosen all hardware and readjust.
11. Locate and pull back the top rear portion of the seal on the front doors. Install the plastic spacer under the factory seal on the door. Then put the seal back into its original position and repeat on the opposite side. (Fig 13 & 14)

Fig 13

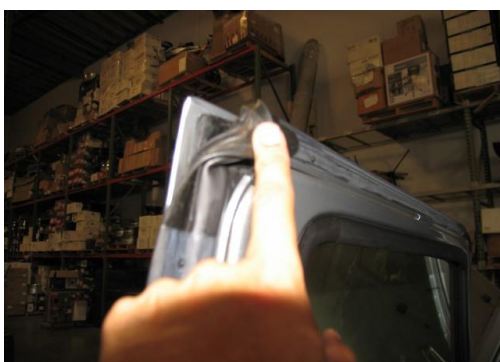


Fig 14



If your top is equipped with a wiper blade proceed to step 12, If the top is not equipped with a wiper blade ensure that all hardware is tight and you are finished.

12. Connect both the water hose and the wiring harness to the top. If your top was not originally equipped with a hard top with a wiper you will need to contact Jeep and order the proper parts to install the harness onto the Jeep. (Fig 15)

