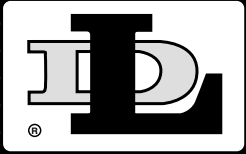
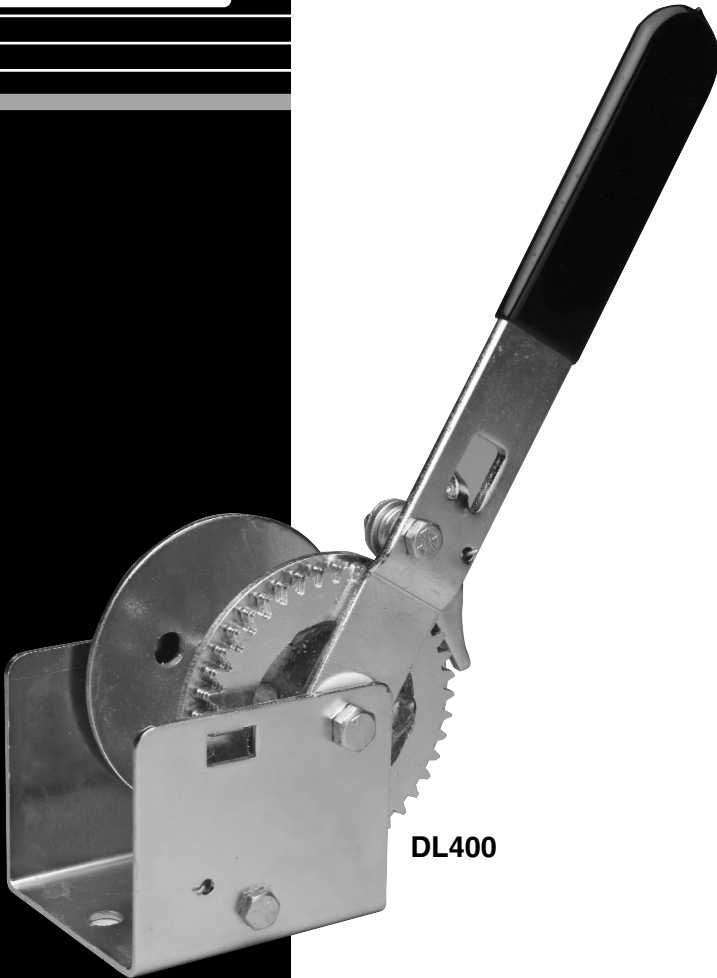


**DL400**



**PULLING  
WINCH**



**DL400**



A Dependable Company Since 1886

**DUTTON-LAINSON COMPANY**

**ISO 9001 CERTIFIED**

**MADE IN  
USA**

**⚠ WARNING** READ INSTRUCTIONS CAREFULLY BEFORE ATTEMPTING TO INSTALL, OPERATE OR SERVICE THIS WINCH. FAILURE TO COMPLY WITH INSTRUCTIONS COULD RESULT IN SERIOUS OR FATAL INJURY. RETAIN THESE INSTRUCTIONS FOR FUTURE REFERENCE.



## IMPORTANT SAFETY INFORMATION

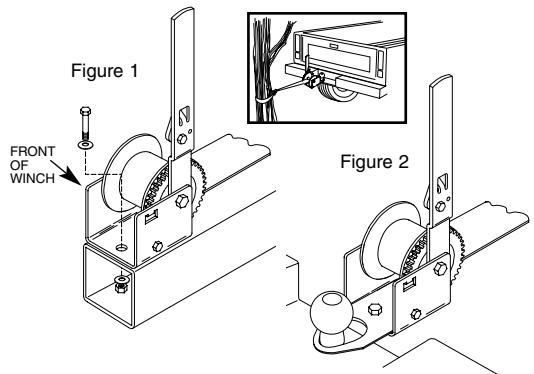
- This winch is built for multi-purpose hauling and pulling operations. It is not recommended for lifting applications. For lifting, use a self-locking winch. DL winches are not to be used as hoists for lifting, supporting or transporting people, or for loads over areas where people could be present.
- Respect this winch. High forces are created when using a winch, creating potential safety hazards. It should be operated and maintained in accordance with instructions. Never allow children or anyone who is not familiar with the operation of the winch to use it.
- When releasing a load with this winch, use extreme caution and maintain a firm grip on the winch handle at all times.
- Check for proper ratchet operation on each use of the winch. Do not use if damaged. Seek immediate repairs.
- Never use the winch handle as a convenient handle for pulling or maneuvering the entire trailer or other equipment. Never pull on the winch handle against a locked ratchet.
- Never exceed rated capacity. Excess load may cause premature failure and could result in serious personal injury. This winch is rated with three layers of line on the hub. Using more layers of line or a large hub increases the load on the winch.
- Never apply load on winch with cable or rope fully extended. Keep at least three full turns of cable or rope on the reel.
- Secure load properly. When winching operation is complete, do not depend on winch to support load.
- Operate with hand power only. This winch should not be operated with a motor of any kind. If the winch cannot be cranked easily with one hand, it is probably over-loaded.

### WINCH MOUNTING AND STRAP OR CABLE ATTACHMENT

— If steel cable is used, SAE Standard J1853 requires winch line breaking strength to be at least 1-1/2 times winch rating (breaking strength of hook must be 1-1/2 times breaking strength of line) and drum hub diameter must be 8 times cable diameter. 5/64" cable meets these requirements.

Attach cable or rope by method described in sketch shown. If nylon strap is used, it should have a loop sewn in one end and be attached using a 1/4" x 2-3/4" long bolt and locknut. Use a locknut, not a nut and lockwasher. Insert bolt through slots in both reel sideplates so that nut is on gear side. Tighten only until snug with bolt in bottom of slot next to reel hub.

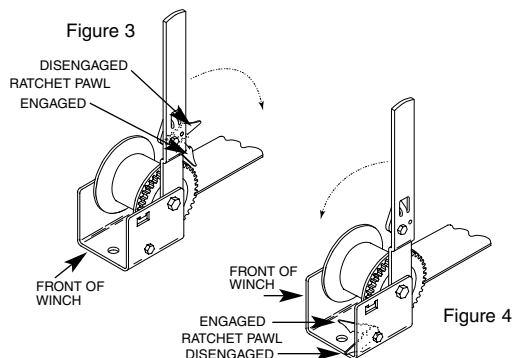
The DL400 can be either mounted directly onto a flat, rigid mounting surface (ex. - trailer winch stand) using (2) 3/8" bolts, washers, and lockwashers (figure 1) or used with the No.6386 ball adaptor plate (figure 2).



**OPERATING INSTRUCTIONS** — Wind line on winch reel by moving handle back and forth with both ratchet pawls engaged. Both ratchets should produce a loud, sharp, clicking noise.

To unwind or reel out line, with a load on the winch, first disengage ratchet pawl on handle and move handle clockwise (see figure 3). Re-engage handle ratchet pawl and move handle counter-clockwise one click. With a firm grip on the handle, move it clockwise slightly to relieve tension on ratchet pawl attached to base. Disengage base ratchet pawl and move handle counter-clockwise to stop (approximately 4" of line travel) (see figure 4). Re-engage base ratchet pawl, move handle clockwise one click and again disengage handle ratchet pawl and move handle clockwise to the stop and repeat sequence.

To 'freewheel' line off with no load on the winch, disengage both ratchet pawls which allows line to be pulled out freely.



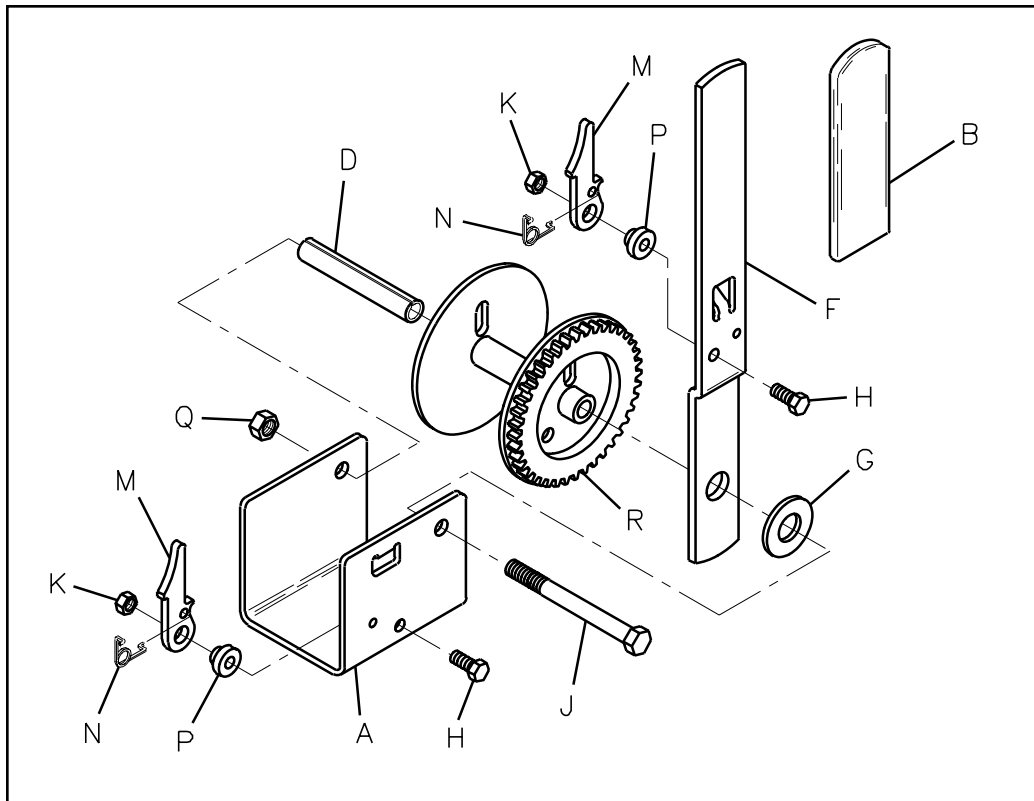
**WINCH MAINTENANCE** — This winch has been fully lubricated at the factory; but, for continued smooth performance and increased life, occasional greasing of reel shaft is recommended.

Keep winch in good working order. Damaged or severely-worn parts create unnecessary dangers and could result in personal injury or property damage.

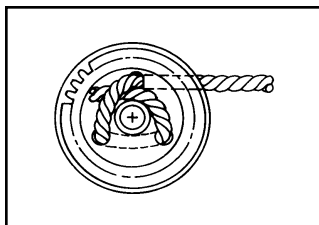
**NOT FOR THE MOVEMENT OF HUMAN BEINGS**

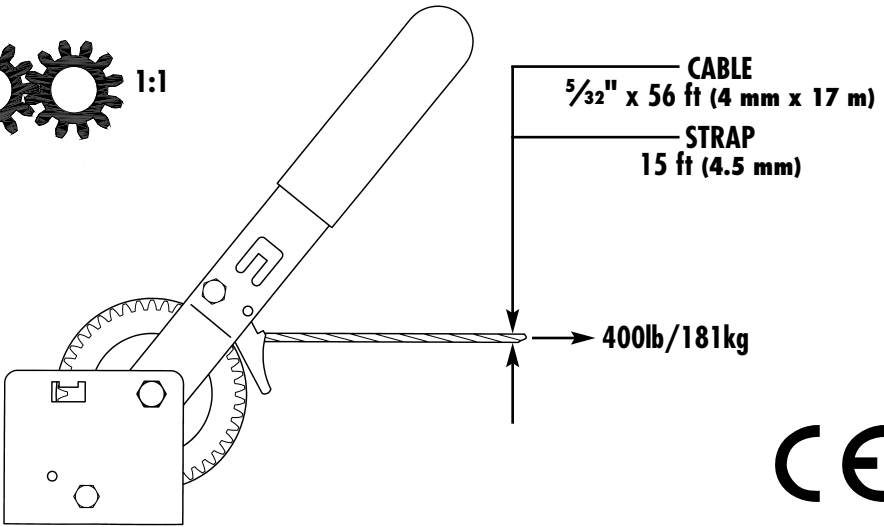


# DL400



Ref.	Description	Part No.
A	Winch Base	404714
B	Handle Grip	206139
D	Reel Spacer	206129
F	Handle	404716
G	Nylon Washer	206130
H	Ratchet Bolt (2)	205004
J	Reel Shaft	205315
K	Locknut (2)	205168
M	Ratchet Pawl (2)	404035
N	Ratchet Spring (2)	204116
P	Ratchet Spacer (2)	404785
Q	Locknut	205316
R	Winch Reel	304878





---

**ENGLISH – EC DECLARATION OF CONFORMITY** – Dutton-Lainson Company, Hastings, NE U.S.A. manufactures and declares that this winch is in conformity with the essential health and safety requirements specified in The Supply of Machinery (Safety) Regulations 1992 and the provisions of The Machinery Directive (89/392/EEC). This declaration does not apply to other machinery using this winch.

---