



# Installation Instructions

## PART NUMBERS: 75998, 87683, 44765

### ⚠ WARNING

To prevent **SERIOUS INJURY, DEATH or PROPERTY DAMAGE:**

- **ALWAYS read, understand and follow warnings and instructions for your hitch BEFORE installation. Keep for future reference.**
- **DO NOT cut, weld or modify this receiver.**
- **CHECK all fasteners are tight and your hitch is securely mounted to your vehicle periodically.**
- **ALWAYS read, understand and follow all warnings and instructions for your vehicle and for other accessories you will use with your hitch BEFORE use.**
- **LOAD the trailer heavier in front.**
- **DO NOT exceed lower of towing vehicle manufacturer’s rating or:**

Hitch Type	Max Gross Trailer Weight	Max Tongue Weight
Weight Carrying	5000 lb. (2270 kg)	500 lb. (227 kg)
Weight Distributing	5000 lb. (2270 kg)	500 lb. (227 kg)

- **ALWAYS wear your seatbelt.**
- **SLOW DOWN when towing, NEVER exceed any posted speed limit.**
- **If EXCESS SWAY occurs, take your foot off the gas pedal and hold the steering wheel as steady as possible. DO NOT apply your brakes and DO NOT speed up.**

### LIMITED LIFETIME WARRANTY

1. **Limited Lifetime Warranty (“Warranty”).** Cequent Performance Products, Inc. (“We”, “Us” or “Our”) warrants to the original consumer purchaser only (“You” or “Your”) that the product will be free from material defects in both material and workmanship, ordinary wear and tear excepted. The Warranty is valid only if (a) the products are returned to Us for inspection and testing; (b) Our inspection discloses to Our satisfaction that any alleged nonconformance are material and have not been caused by misuse, neglect, wear and tear, improper installation, unsuitable storage, improper repair, alteration, or accident; and (c) the products were installed, maintained and used in accordance with Our instructions. **THE WARRANTY IS MADE IN LIEU OF ALL OTHER WARRANTIES, EXPRESS OR IMPLIED (OTHER THAN THE WARRANTY OF TITLE AS PROVIDED BY THE UNIFORM COMMERCIAL CODE IN EFFECT IN MICHIGAN), INCLUDING WITHOUT LIMITATION, ANY WARRANTIES OF MERCHANTABILITY OR FITNESS FOR A PARTICULAR PURPOSE, SAID WARRANTIES BEING EXPRESSLY DISCLAIMED.**
2. **Obligations of Purchaser.** To make a Warranty claim, contact Us at our principal address of 47912 Halyard Drive, Suite 100, Plymouth, MI 48170, 1-800-632-3290, identify the product by model number, and follow the claim instructions that will be provided. Any returned product that is replaced by Us becomes our property. You may be responsible for return shipping costs. Please retain your purchase receipt to verify date of purchase and that You are the original consumer purchaser. The product and the purchase receipt must be provided to Us in order to process Your Warranty claim.
3. **Exclusive Remedy.** Product replacement is Your sole and exclusive remedy under this Warranty. We shall not be liable for service or labor charges incurred in removing or replacing a product. **IN NO EVENT WILL WE BE RESPONSIBLE FOR ANY INDIRECT, SPECIAL, CONSEQUENTIAL OR PUNITIVE DAMAGES.**
4. **Assumption of Risk.** You acknowledge and agree that any use of the product for any purpose other than the specified use(s) stated in the product instructions is at Your own risk.
5. **Governing Law.** This Warranty gives You specific legal rights, and You also may have other rights which vary from state to state. This Warranty is governed by the laws of the State of Michigan, without regard to rules pertaining to conflicts of law. The state courts located in Oakland County, Michigan shall have exclusive jurisdiction for any disputes relating to this Warranty.



# Installation Instructions

PART NUMBERS: 75998, 87683, 44765

## Applications:

Years	Make	Models
2014-Current*	Jeep	Cherokee

\*Visit our website for the most up to date information regarding application years and trim levels.

## Installation Time: 1 hr.

The time listed above is the average time for professional installers. If you do not feel comfortable performing this installation on your own or are in need of assistance, please contact a professional installer.

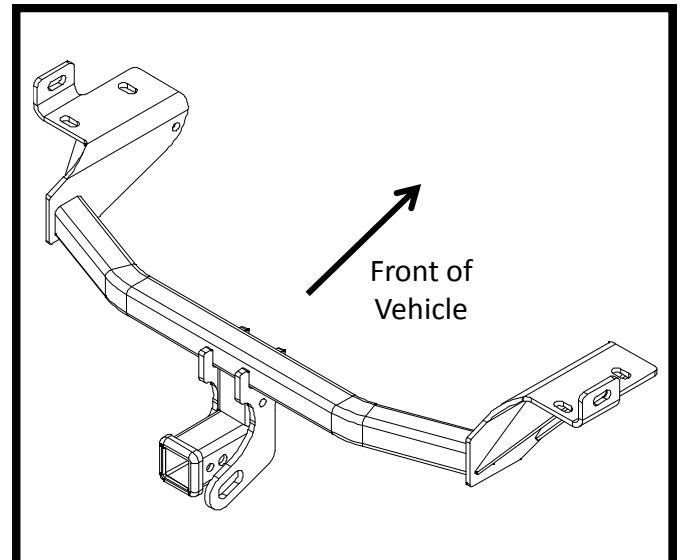


Representative Vehicle Photo

## Equipment Required:


## DO NOT EXCEED LOWER OF TOWING VEHICLE MANUFACTURER'S RATING OR:

Hitch Type	Max Gross Trailer Weight	Max Tongue Weight
Weight Carrying	5000 lb. (2270 kg)	500 lb. (227 kg)
Weight Distributing	5000 lb. (2270 kg)	500 lb. (227 kg)



Hitch Illustration



Always wear SAFETY GLASSES when installing hitch

# Installation Instructions

PART NUMBERS: 75998, 87683, 44765

①	Qty. (6)	Carriage bolt ½-13 x 1.75 GR8	
②	Qty. (6)	Spacer .250 x 1 x3	
③	Qty. (6)	Conical washer ½"	
④	Qty. (6)	Hex nut ½ -13 GR8	
⑤	Qty. (6)	Pull wire ½-13	
⑥	Qty. (2)	Cable ties	
⑦	Qty. (4)	Lock washer 9/16, M14	

Fastener Kit: 75998F

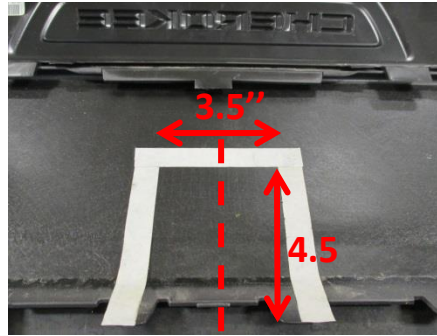


Figure 4

Fasteners typical both sides



Figure 2



Figure 3

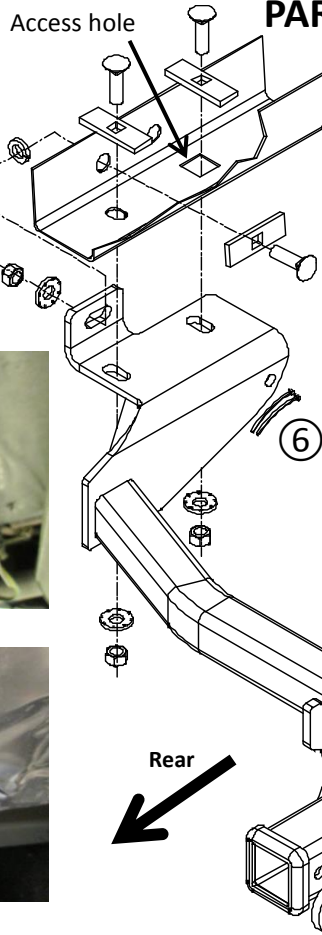
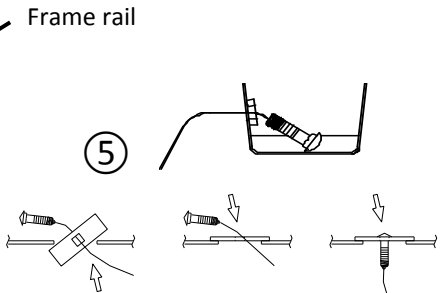


Figure 1

① ②+⑦  
(if needed)  
+ ③ ④



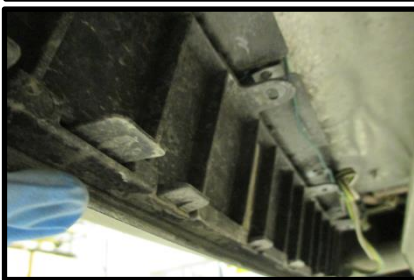
A. Insert bolt and Block into frame B. Align block on access hole C. Pull bolt thru block

Figure 5

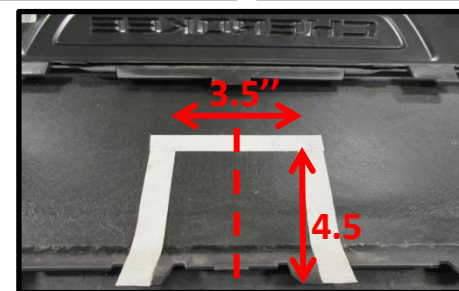
- Lower exhaust - use 13mm socket to remove (2) bolts that connect exhaust hanger bracket to the frame (each side). Use exhaust support stand to prevent damaging muffler.
- Loosen lower fascia— use 8mm socket to remove (4) lower fascia support fasteners and press down the tabs to detach bottom plastic panel as shown in Figure 2. **NOTE:** On Trailhawk models remove (4) extra plastic rivets that secure the heat shield around lower fascia and take the heat shield down as shown in Figure 3.
- Locate center line of lower fascia and trim 4.5" tall and 3.5" wide, as shown in Figure 4.
- Remove (1) rubber square plug from each frame rail. Return it to owner. Detach (3) vehicle wiring plastic fasteners from frame rail both sides, using a screwdriver or trim panel tool. **NOTE:** On Trailhawk models remove (2) existing M14 bolts from the rear vertical and horizontal frame on each side. Keep them for reassembly.
- Feed the carriage bolt ① and spacer ② through access square hole using the pull wires ⑧ for both vertical and horizontal slots, as shown in Figure 5. Leave pull wires attached. **NOTE:** On Trailhawk models only feed (1) vertical hardware through forward square slot and reuse (2) M14 bolts removed in step 4 each side.
- Raise hitch into position, over the exhaust, and feed the pull wires through bracket slot. Remove pull wires and loosely install conical washer ③, hex nut ④, lock washer ⑦ (if needed) and M14 bolts (Trailhawk only) to the hitch. **NOTE:** Remove the seam sealer on the side of the frame for proper fitment. Double check if the trim area is enough for the hitch. Make additional trimming if needed.
- Tighten all ½-13 GR8 fasteners with torque wrench to 110 Lb.-Ft. (149 N\*M) and all M14 CL 10.9 fasteners to 148 Lb.-Ft. (201 N\*M)**  
**▲ Proper torque is needed to keep the hitch secure to the vehicle when towing.**
  - Use cable ties ⑥ to secure vehicle wiring to the forward hole on the side of hitch bracket.
  - Reinstall bottom plastic panel, lower fascia, and exhaust removed in step 1, 2.

Note: check hitch frequently, making sure all fasteners and ball are properly tightened. If hitch is removed, plug all holes in trunk pan or other body panels to prevent entry of water and exhaust fumes. A hitch or ball which has been damaged should be removed and replaced. Observe safety precautions when working beneath a vehicle and wear eye protection. Do not cut access or attachment holes with a torch.

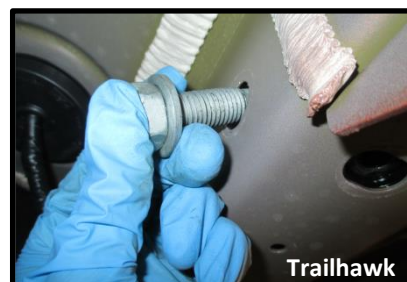
1. Lower exhaust - use 13mm socket to remove (2) bolts that connect exhaust hanger bracket to the frame (each side). Use exhaust support stand to prevent damaging muffler.
2. Loosen lower fascia- use 8mm socket to remove (4) lower fascia support fasteners and press down the tabs to detach bottom plastic panel as shown in Figure 2.



2. **NOTE:** On Trailhawk models remove (4) extra plastic rivets that secure the heat shield around lower fascia and take the heat shield down as shown in Figure 3.
3. Locate center line of lower fascia and trim 4.5" tall and 3.5" wide, as shown in Figure 4.



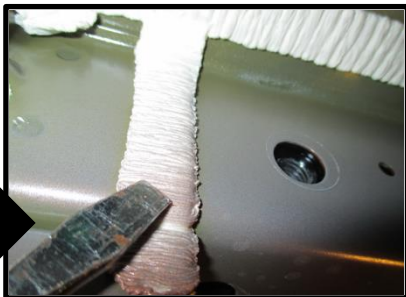
4. Remove (1) rubber square plug from each frame rail. Return it to owner. Detach (3) vehicle wiring plastic fasteners from frame rail both sides, using a screwdriver or trim panel tool. **NOTE:** On Trailhawk models remove (2) existing M14 bolts from the rear vertical and horizontal frame on each side. Keep them for reassembly.



5. Feed the carriage bolt (1) and spacer (2) through access square hole using the pull wires (8) for both vertical and horizontal slots, as shown in Figure 5. Leave pull wires attached. **NOTE:** On Trailhawk models only feed (1) vertical hardware through forward square slot and reuse (2) M14 bolts removed in step 4 each side.



6. Raise hitch into position, over the exhaust, and feed the pull wires through bracket slot. Remove pull wires and loosely install conical washer ③, hex nut ④, lock washer ⑦ (if needed) and M14 bolts (Trailhawk only) to the hitch. **NOTE:** Remove the seam sealer on the side of the frame for proper fitment. Double check if the trim area is enough for the hitch. Make additional trimming if needed.



7. **Tighten all 1/2-13 GR8 fasteners with torque wrench to 110 Lb.-Ft. (149 N\*M) and all M14 CL 10.9 fasteners to 148 Lb.-Ft. (201 N\*M)**

⚠ Proper torque is needed to keep the hitch secure to the vehicle when towing.

8. Use cable ties ⑥ to secure vehicle wiring to the forward hole on the side of hitch bracket.



9. Reinstall bottom plastic panel, lower fascia, and exhaust removed in step 1, 2.

