

Installation Instructions

Part Numbers:

75790

Ford Ranger

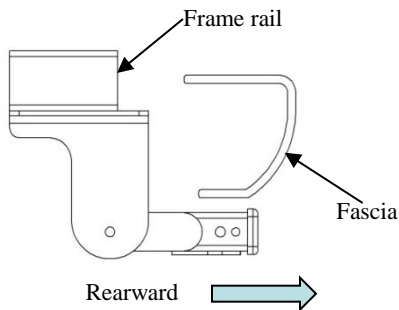
Note: Relocation of spare tire bracket is NOT required.

**Do Not Exceed Lower of Towing Vehicle
Manufacturer's Rating or**

Hitch type	Max Gross Trailer WT (LB)	Max Tongue WT (LB)
Weight Distributing	6,000 (2724 Kg)	600 (272 Kg)
Weight Carrying Ball Mount	4,000 (1816 Kg)	600 (272 Kg)

Wiring Access Location: PU3 & PU4

Accessory Rating	C
------------------	----------



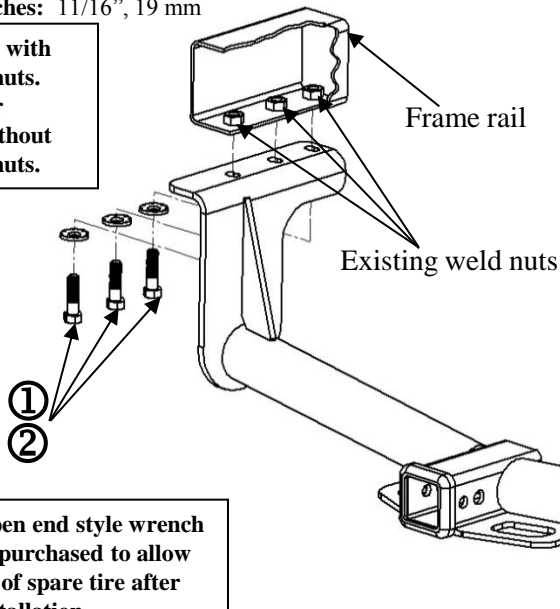
Hitch Shown In Proper Position

Equipment Required:

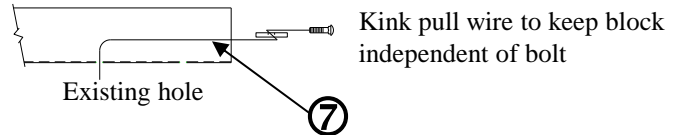
Fastener Kit: 75790F (May have fasteners left over.)

Wrenches: 11/16", 19 mm

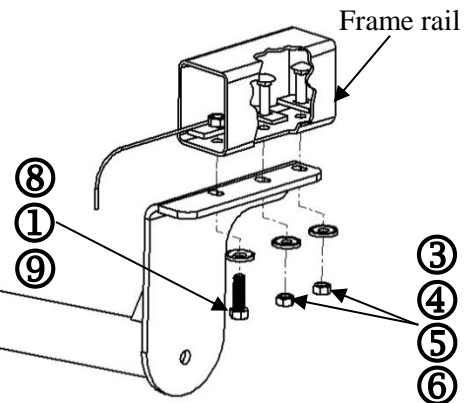
Vehicle shown with existing weld nuts. See Sheet 2 for installation without existing weld nuts.



Note: 19mm open end style wrench must be purchased to allow removal of spare tire after hitch installation.



Example of Pull Wire Procedure



①	Qty. (4)	Conical Washer 1/2"	⑥	Qty. (4)	Hex Nut 7/16"-14
②	Qty. (3)	Hex Bolt M12 x 1.75 mm x 45 mm CL 10.9	⑦	Qty. (4)	Pull Wire 7/16"-14
③	Qty. (4)	Carriage Bolt 7/16"-14 x 1-3/4" GR 5	⑧	Qty. (2)	Nut-Block-Handle Assembly
④	Qty. (4)	Block 3/16" x 1" x 2"	⑨	Qty. (2)	Hex Bolt M12 x 1.25 mm x 40 mm CL 10.9
⑤	Qty. (4)	Conical Washer 7/16"			

1. Remove existing (OE) tow bar bracket if equipped.
2. Position the hitch on the frame rail as shown.
3. Install the 1/2" conical washers and M12 x 1.75 mm hex bolts as shown to hold the hitch in place.
4. Install blocks and 7/16" carriage bolts using the pull wire procedure as shown. Leave the pull wires attached.
5. Use the pull wires to insert the 7/16" carriage bolts through the attachment holes of the hitch. Remove the pull wires.
6. Install the 7/16" conical washers and hex nuts as shown.
7. Insert nut-block-handle assembly through opening in rear of frame rail and slide over rearmost hole. Make sure the nut-block-handle assembly is flat on the surface of the frame rail.
8. While holding nut-block-handle assembly in place, install M12 x 1.25 mm hex bolt and 1/2" conical washer as shown.
9. Torque all fasteners to specification.

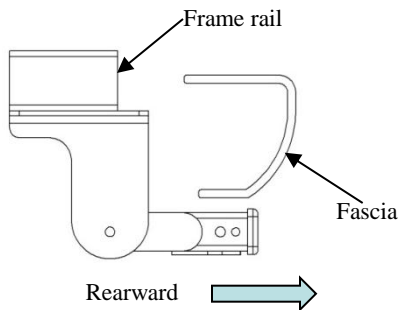
Tighten all 7/16" GR 5 fasteners with torque wrench to 50 Lb.-Ft. (68 N*M)

Tighten all M12 x 1.75 mm CL 10.9 fasteners with torque wrench to 92 Lb.-Ft. (125 N*M)

Tighten all M12 x 1.25 mm CL 10.9 fasteners with torque wrench to 130 Lb.-Ft. (176 N*M)

Cequent





Installation Instructions

Part Numbers:

Ford Ranger

75790

Note: Relocation of spare tire bracket is NOT required.

**Do Not Exceed Lower of Towing Vehicle
Manufacturer's Rating or**

Hitch type	Max Gross Trailer WT (LB)	Max Tongue WT (LB)
Weight Distributing	6,000 (2724 Kg)	600 (272 Kg)
Weight Carrying Ball Mount	4,000 (1816 Kg)	600 (272 Kg)

Wiring Access Location: PU3 & PU4

Accessory Rating

C

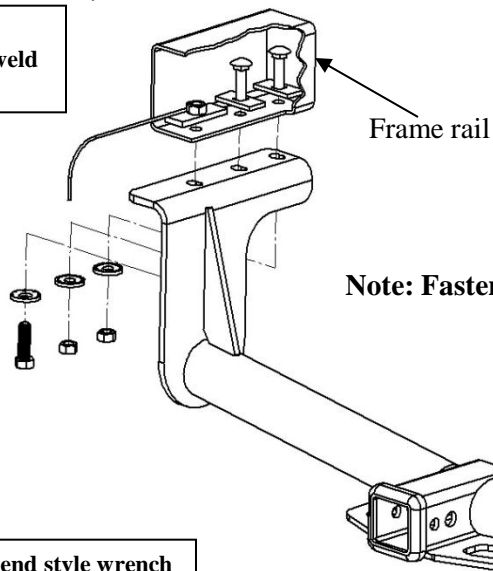
Hitch Shown In Proper Position

Equipment Required:

Fastener Kit: 75790F (May have fasteners left over.)

Wrenches: 11/16", 19 mm

Vehicle shown without existing weld nuts.



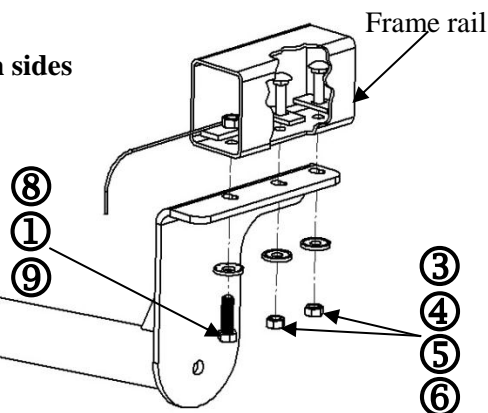
Kink pull wire to keep block independent of bolt

Existing hole

⑦

Example of Pull Wire Procedure

Note: Fasteners typical both sides



Note: 19mm open end style wrench must be purchased to allow removal of spare tire after hitch installation.

①	Qty. (4)	Conical Washer 1/2"	⑥	Qty. (4)	Hex Nut 7/16"-14
②	Qty. (3)	Hex Bolt M12 x 1.75 mm x 45 mm CL 10.9	⑦	Qty. (4)	Pull Wire 7/16"-14
③	Qty. (4)	Carriage Bolt 7/16"-14 x 1-3/4" GR 5	⑧	Qty. (2)	Nut-Block-Handle Assembly
④	Qty. (4)	Block 3/16" x 1" x 2"	⑨	Qty. (2)	Hex Bolt M12 x 1.25 mm x 40 mm CL 10.9
⑤	Qty. (4)	Conical Washer 7/16"			

1. Install blocks and 7/16" carriage bolts using the pull wire procedure as shown. Leave the pull wires attached.
2. Position the hitch on the frame rail as shown.
3. Use the pull wires to insert the 7/16" carriage bolts through the attachment holes of the hitch. Remove the pull wires.
4. Install the 7/16" conical washers and hex nuts as shown.
5. Insert nut-block-handle assembly through opening in rear of frame rail and slide over rearmost hole (both sides). Make sure each nut-block-handle assembly is flat on the surface of the frame rail.
6. While holding the nut-block-handle assemblies in place, install M12 x 1.25 mm hex bolts and 1/2" conical washers as shown.
7. Torque all fasteners to specification.

Tighten all 7/16" GR 5 fasteners with torque wrench to 50 Lb.-Ft. (68 N*M)

Tighten all M12 x 1.75 mm CL 10.9 fasteners with torque wrench to 92 Lb.-Ft. (125 N*M)

Tighten all M12 x 1.25 mm CL 10.9 fasteners with torque wrench to 130 Lb.-Ft. (176 N*M)