

# Installation Instructions

## Ford Escape

Part Numbers:

**75782**  
**87641**  
**44694**

**Do Not Exceed Lower of Towing Vehicle  
 Manufacturer's Rating or**

Hitch type	Max Gross Trailer WT (LB)	Max Tongue WT (LB)
Weight Distributing	<b>5000 (2270 Kg)</b>	<b>525 (239 Kg)</b>
Weight Carrying Ball Mount	<b>3500 (1589 Kg)</b>	<b>525 (239 Kg)</b>

### Hitch Shown In Proper Position

**Equipment Required:** Pull wire (provided), tin snips, file or die grinder, soapy water or lubricant

**Fastener Kit:** 75782F

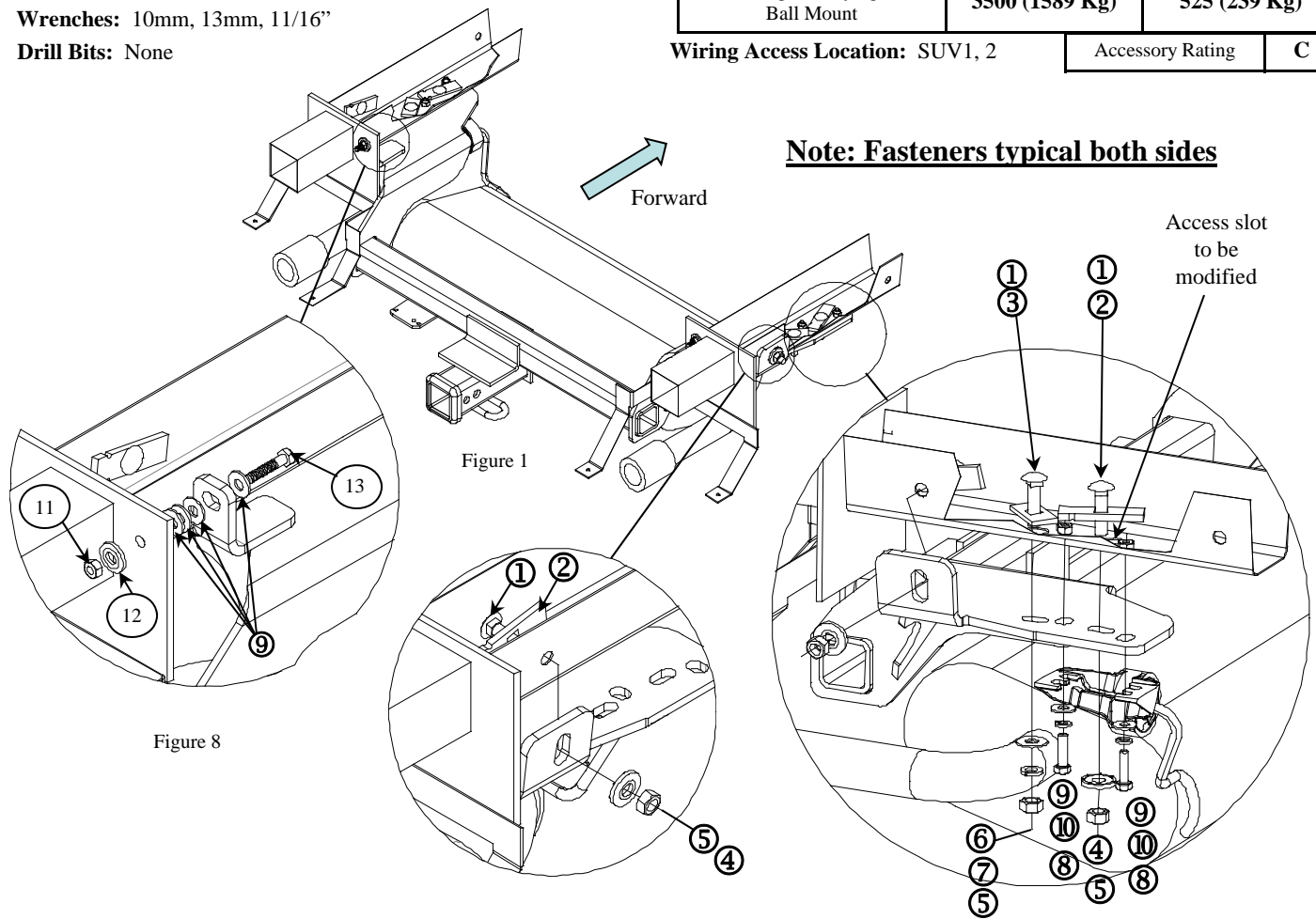
**Wrenches:** 10mm, 13mm, 11/16"

**Drill Bits:** None

**Wiring Access Location:** SUV1, 2

Accessory Rating

C



**Note: Fasteners typical both sides**

①	Qty. (6)	Carriage bolts 7/16-14 X 1.50 GR5	⑧	Qty. (4)	Hex bolts M8-1.25 X 30mm CL8.8
②	Qty. (4)	Spacer 1/4" X 7/8" x 3"	⑨	Qty. (12)	Flat washer 5/16"
③	Qty. (2)	Spacer 3/16" X 1" X 2"	⑩	Qty. (4)	Lock washer 5/16"
④	Qty. (4)	Conical washer 7/16"	⑪	Qty. (2)	Hex nut M8-1.25
⑤	Qty. (6)	Hex nuts 7/16-14	⑫	Qty. (2)	Conical washer 3/8"
⑥	Qty. (2)	Flat washer 7/16"	⑬	Qty. (2)	Hex bolts M8-1.25 X 40mm CL10.9
⑦	Qty. (2)	Lock washer 7/16"	⑭	Qty. (6)	Pull wire 7/16"

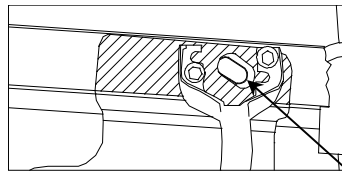
**Cequent**



# Installation Instructions

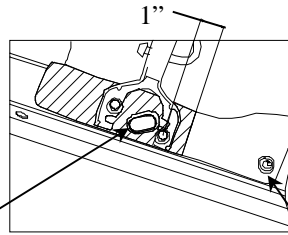
## Ford Escape

Part Numbers:  
**75782 , 87641,**  
**44694**



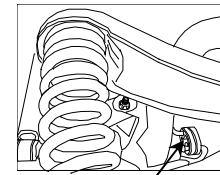
Passenger side heat shield trim hatch area

Figure 3



Driver side heat shield trim hatch area

Figure 2

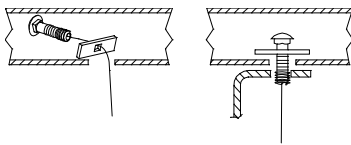


Rubber isolator hanger forward

Figure 4

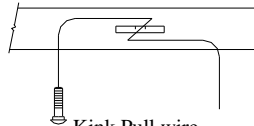


Pull wire (6)



Reverse pull wire procedure

Figure 5



Kink Pull wire to keep spacer independent of bolt

Example of pull wire procedure

Figure 6

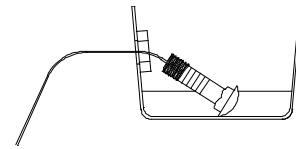


Figure 7

Note: recommend 2 people for hitch installation.

1. Lower the exhaust. Remove the two fasteners on exhaust hanger brackets each side of the frame. Remove the rubber isolator hanger forward the suspension for additional room. See Figure 4. Spraying a lubricant or soapy water on the metal hanger rod and the rubber isolator helps removal.
2. Loosen and trim the heat shield. On the drivers side remove fastener in forward location measure and mark the area to be trimmed. See Figure 2. Trim passenger side heat shield as shown in Figure 3. After trimming re-secure the heat shield on the drivers' side with the fastener removed earlier.
3. Enlarge the access hole using a file or grinder to allow carriage bolt access.
4. Install hardware into the frame rails, by feeding the pull wire (coiled end) into the hole inside the frame and feed it out the modified access slot attaching the required fastener and pull them into position (leave pull wires attach). Starting with the rear side frame rail (items 1 & 2), the rear attachment horizontal slot (items 1 & 3) see Figure 6. Install remaining 7/16 fasteners (items 1 & 2) using the reverse pull wire procedure. See Figure 6
5. Push side fasteners with pull wires attached back into frame as shown. See Figure 7
6. Slide the hitch into position, starting with the driver's side, sliding from the passenger side up over the exhaust then the passenger side into position. Note feed the pull wires through the slots as needed.
7. Attach the rear horizontal 7/16 fasteners using the flat washer, lock washer and hex nut to help support the hitch.
8. Install (item 13 & 9) M8-1.25 x 40mm bolt and 5/16 flat washer thru the bracket tab at rear of the hitch. Attach the (3) 5/16" flat washers to item 13 on both sides, then push the hitch rearward toward the end frame. Feed the fasteners through the end frame and bumper plate attach the 3/8" conical washer and M8 hex nut. See Figure 8
9. Pull the fasteners thru the vertical slot on the side attachment, place the conical washer on carriage bolt and remove pull wire and attach hex nut.
10. Attached the rest of the fasteners as shown and hand tighten only at this time.
11. Reattach exhaust hanger brackets using the fasteners as shown.
12. Tighten all fasteners to the required torque specification.
13. Reattach the rubber isolator hanger.

Tighten all M8 CL8 fasteners with torque wrench to 18 Lb.-Ft. (23 N\*M)

Tighten all M8 CL10.9 fasteners with torque wrench to 27 Lb.-Ft. (37 N\*M)

Tighten all 7/16 GR5 fasteners with torque wrench to 50 Lb.-Ft (68 N\*M)