



Installation Instructions

PART NUMBERS: 75223, 87690, 44777

Applications:

Years	Make	Models
2015-Current*	Mercedes	GLA 250

*Visit our website for the most up to date information regarding application years and trim levels.

Installation Time: **90 min.**

The time listed above is the average time for professional installers. If you do not feel comfortable performing this installation on your own or are in need of assistance, please contact a professional installer.



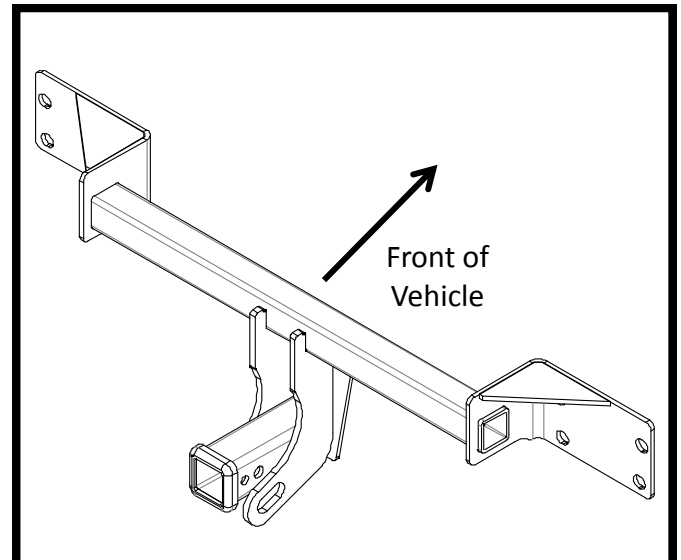
Representative Vehicle Photo

Equipment Required:

Safety Glasses	Ratchet	6 mm 10 mm 16 mm Sockets	6" Socket Extension	Torque Wrench
Star Drivers T40	Flat Head Screw Driver	Tin Snips	Marker	Plastic Trim Tools

DO NOT EXCEED LOWER OF TOWING VEHICLE MANUFACTURER'S RATING OR:

Hitch Type	Max Gross Trailer Weight	Max Tongue Weight
Weight Carrying	3500 lb. (1589 kg)	350 lb. (159 kg)
Weight Distributing	X	X



Hitch Illustration

Always wear SAFETY GLASSES when installing hitch

Installation Instructions

PART NUMBERS: 75223, 87690, 44777

NOTE: For "SPORT MODEL" slight lower fascia trimming is necessary.

Fastener Kit: 75223F



Figure 4

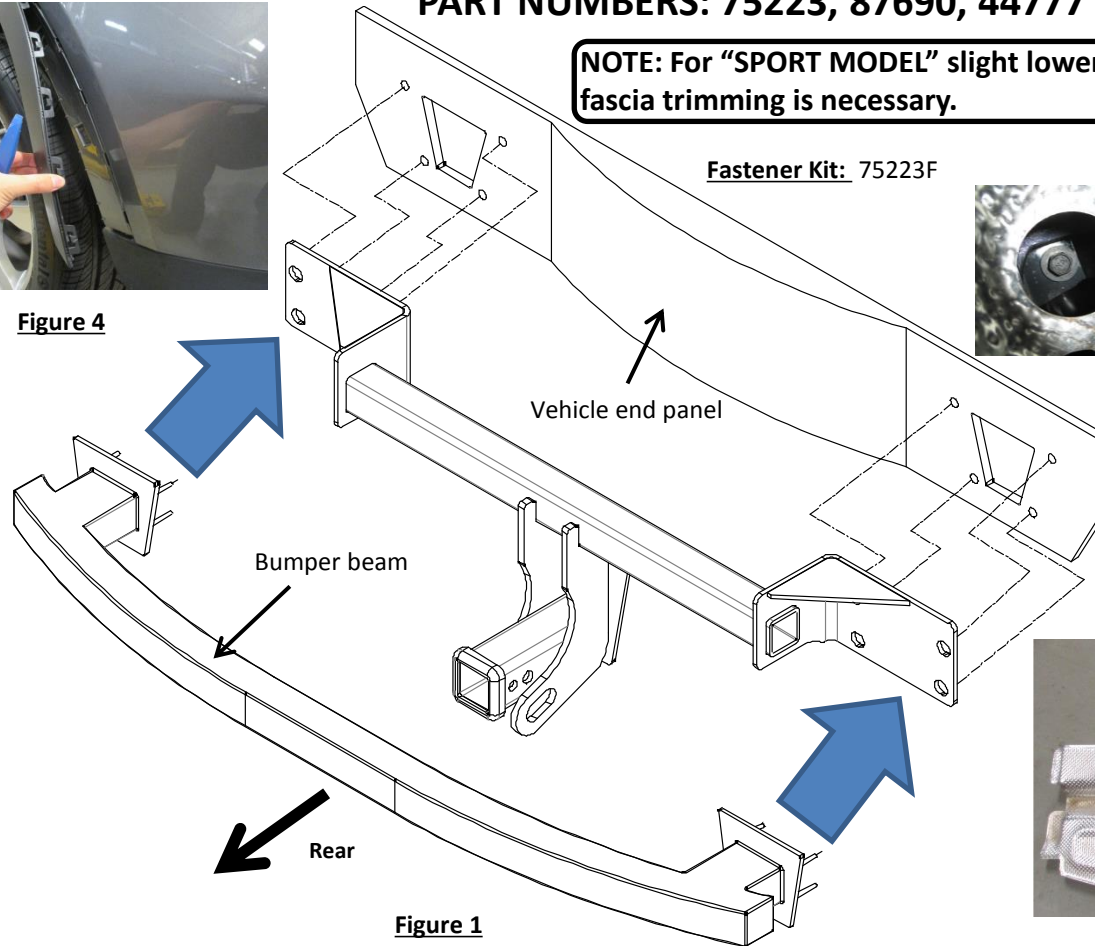


Figure 1



Figure 2

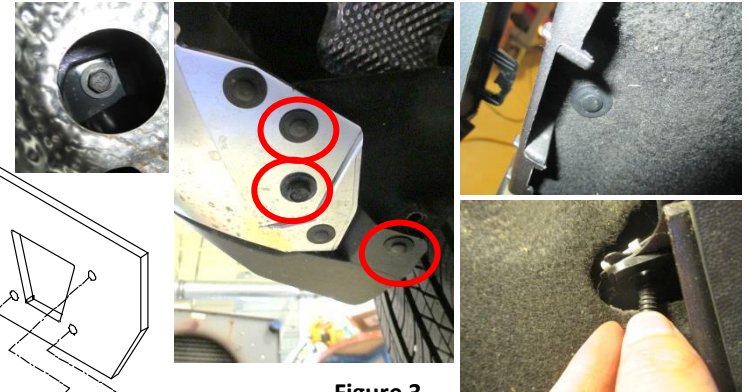


Figure 3

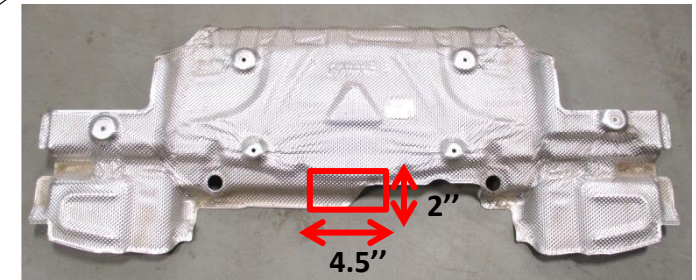


Figure 5

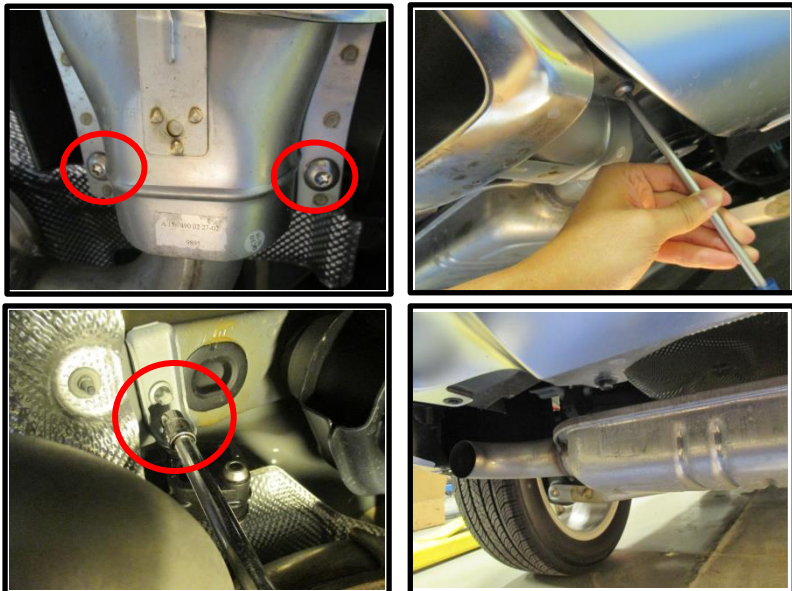
1. Exhaust tips removal - use T40 driver to remove (2) bolts from tips bottom each side. Use 10mm socket to remove (1) bolt each side which secures the exhaust hanger bracket and lower down the muffler.
2. Taillight removal - remove (1) plastic wing nut inside the trunk each side and then unplug the wiring, see Figure 2.
3. Heat shield removal - use 8mm socket to remove (6) flange nuts which secure heat shield and rest the heat shield on muffler. Do not take the heat shield out of the vehicle.
4. Bumper fascia removal - use 10mm socket and flat screwdriver to remove (2) plastic rivets, (2) bolts at rear fascia bottom per side (see Figure 3), and (1) plastic rivet, (1) bolt at rear wheel well trim panel per side (see Figure 3). Gently pull off the rear wheel well trim panel each side by unclipping the tabs inside, see Figure 4. Gently remove the fascia by pressing the vertical tabs along inside top section of fascia and unplugging wiring each side. Set bumper fascia aside.
5. Bumper beam removal - use 16mm socket to remove (4) flange nuts inside bumper panel each side. Unclip the wiring attaching on bumper beam passenger side and take the bumper down.
6. Hitch installation - align the holes in hitch with the welded bolts on bumper beam. Raise the hitch/bumper together and place them through original bumper mounting holes. Loosely fasten the nuts.
7. Heat shield trimming - locate the center of heat shield and trim 2" tall and 4.5" wide area, see Figure 5. Make additional trimming if needed.
8. **Tighten all fasteners with torque wrench to 38 Lb.-Ft. (52 N*M)**

⚠ Proper torque is needed to keep the hitch secure to the vehicle when towing.

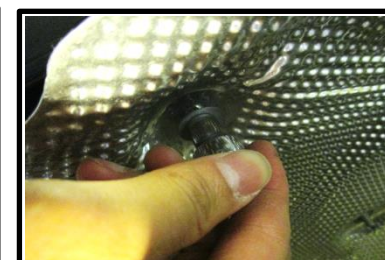
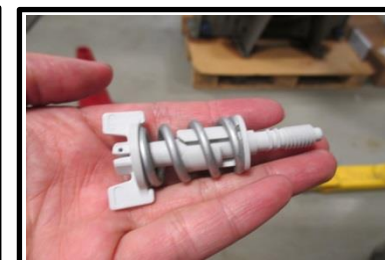
9. For sport model, make slight trimming on the rear fascia bottom if necessary. Reinstall the heat shield, fascia, and exhaust removed in step 1 - 4.
Note: check hitch frequently, making sure all fasteners and ball are properly tightened. If hitch is removed, plug all holes in trunk pan or other body panels to prevent entry of water and exhaust fumes. A hitch or ball which has been damaged should be removed and replaced. Observe safety precautions when working beneath a vehicle and wear eye protection. Do not cut access or attachment holes with a torch.

This product complies with safety specifications and requirements for connecting devices and towing systems of the state of New York, V.E.S.C. Regulation V-5 and SAE J684.

1. Exhaust tips removal - use T40 driver to remove (2) bolts from tips bottom each side. Use 10mm socket to remove (1) bolt each side which secures the exhaust hanger bracket and lower down the muffler.



2. Taillight removal - remove (1) plastic wing nut inside the trunk each side and then unplug the wiring, see Figure 2.

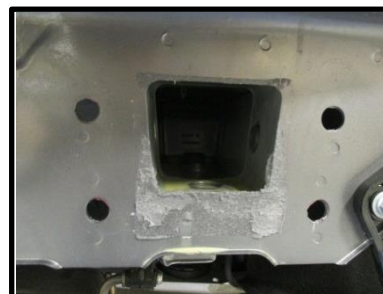


3. Heat shield removal - use 8mm socket to remove (6) flange nuts which secure heat shield and rest the heat shield on muffler. Do not take the heat shield out of the vehicle.

4. Bumper fascia removal - use 10mm socket and flat screwdriver to remove (2) plastic rivets, (2) bolts at rear fascia bottom per side (see Figure 3), and (1) plastic rivet, (1) bolt at rear wheel well trim panel per side (see Figure 3). Gently pull off the rear wheel well trim panel each side by unclipping the tabs inside, see Figure 4. Gently remove the fascia by pressing the vertical tabs along inside top section of fascia and unplugging wiring each side. Set bumper fascia aside.



5. Bumper beam removal - use 16mm socket to remove (4) flange nuts inside bumper panel each side. Unclip the wiring attaching on bumper beam passenger side and take the bumper down.



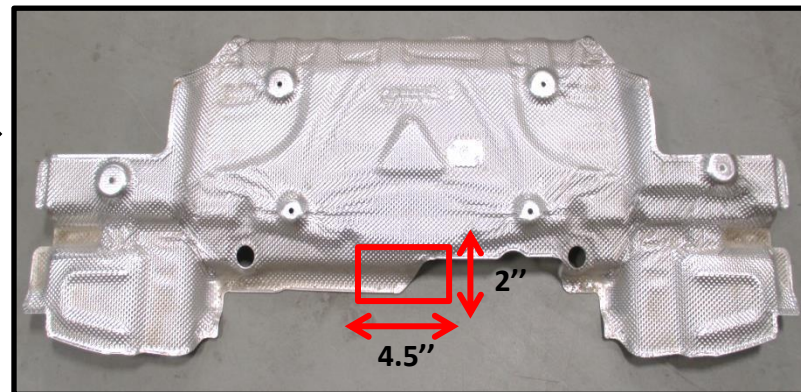
6. Hitch installation - align the holes in hitch with the welded bolts on bumper beam. Raise the hitch/bumper together and place them through original bumper mounting holes. Loosely fasten the nuts.



7. Locate the center of heat shield and trim 2" tall and 4.5" wide area, see Figure 5. Make additional trimming if needed.

8. **Tighten all fasteners with torque wrench to 38 Lb.-Ft. (52 N*M)**

⚠ Proper torque is needed to keep the hitch secure to the vehicle when towing.



9. For sport model, make slight trimming on rear fascia bottom if necessary. Reinstall the heat shield, fascia, and exhaust removed in step 1 - 4.

