

Installation Instructions

Dodge RAM 2500/3500

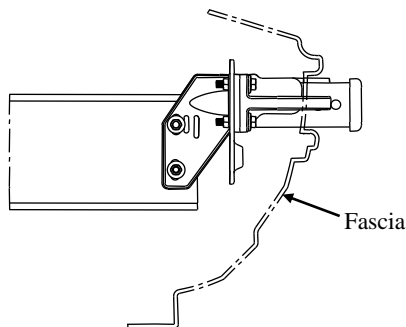
w/ Factory Tow Hook Package

Part Numbers:
65063

Do Not Exceed Lower of Towing Vehicle
Manufacturer's Rating or

CARGO CAPACITY – Do not exceed
**500 LB. or Truck Front
Gross Axle Weight Rating, (GAWR).**

9,000lb. | MAXIMUM WINCH LINE PULL



Hitch Shown In Proper Position

Equipment Required: Tape

Fastener Kit: 65063F

Wrenches: 11/16", 17mm

Drill Bits: None

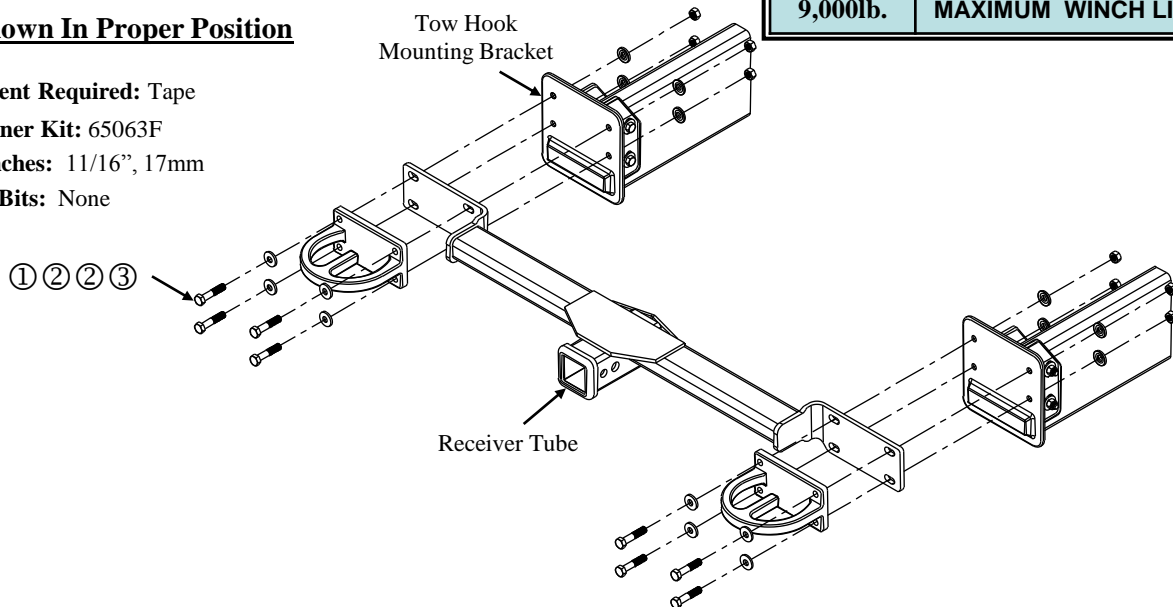


Figure 3: Hitch Installation

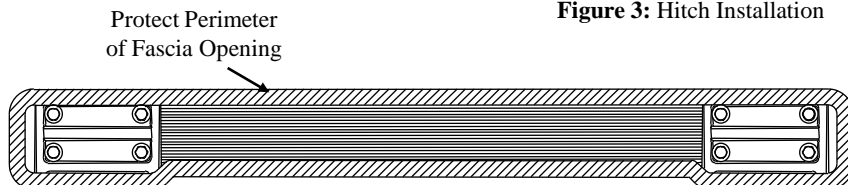


Figure 1: Fascia Opening

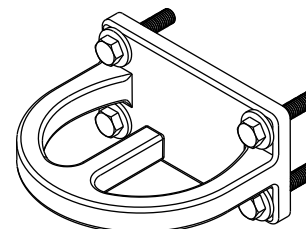


Figure 2: OEM Tow Hook Assembly

①	Qty. (8)	M10 X 1.50 X 60 CL 10.9 Hex Bolt	③	Qty. (8)	M10 X 1.50 CL 10 Hex Nut
②	Qty. (16)	3/8" Conical Washer			

Note: During the installation, it is recommended to cover the edges of the fascia opening to protect the chrome/paint as shown in Figure 1.

1. Remove factory tow hooks and fasteners from vehicle, set tow hooks aside and return fasteners to customer.
2. Before raising hitch into position insert provided fasteners through tow hooks as shown in Figure 2.
3. Raise hitch into position and align with holes in tow hook mounting bracket.
4. Raise tow hook into position and insert fasteners through hitch brackets and into the tow hook mounting bracket.
5. On the reverse side of tow hook mounting bracket install fasteners as shown in Figure 3.

Tighten all M10 fasteners with torque wrench to 53 Lb.-Ft.

Note: When attaching accessories make sure not to over insert shank into receiver tube, doing so may damage the radiator.

Cequent

