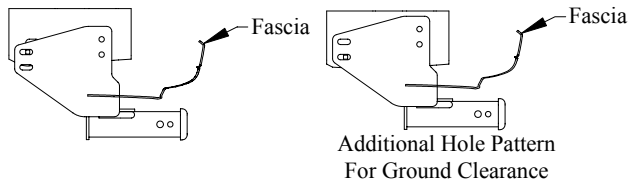


# Front Mounted Receiver Installation Instructions

Part Numbers:

**65043**

**Ford F-150  
Lincoln Mark LT**



**CARGO CAPACITY – DO NOT EXCEED  
500 LB. OR VEHICLE FRONT GROSS  
AXLE WEIGHT RATING. (GAWR)**

9000

**LB. MAX. WINCH LINE PULL**

## Receiver Shown In Proper Position

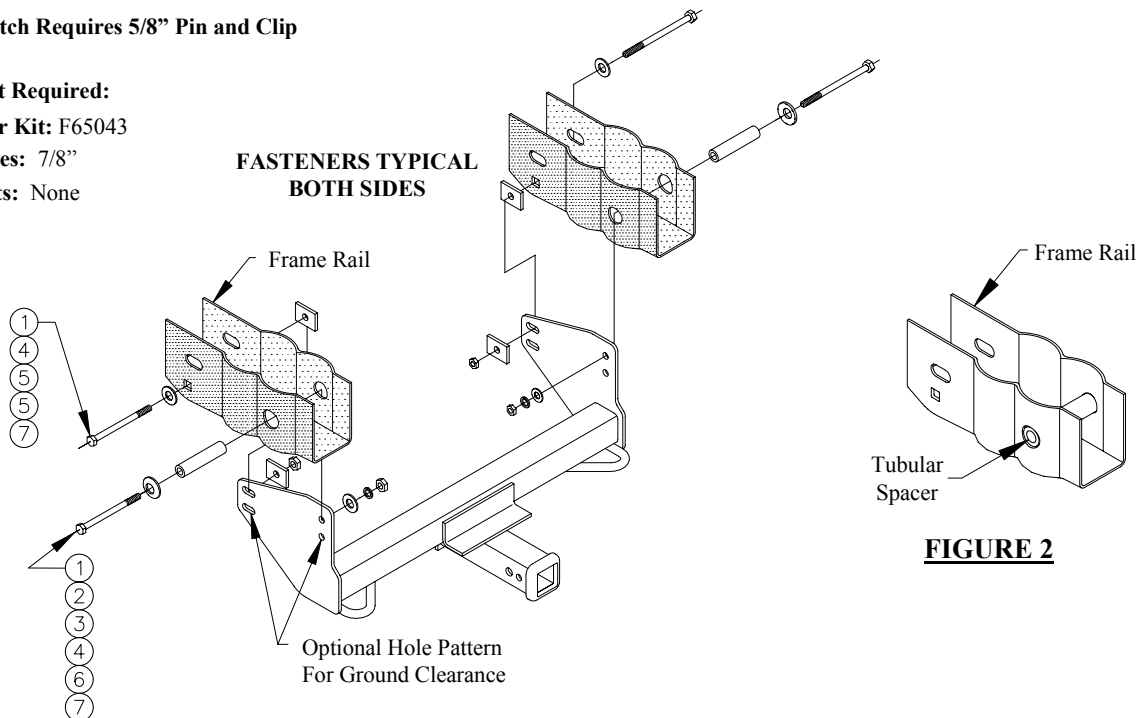
Hitch Requires 5/8" Pin and Clip

### Equipment Required:

**Fastener Kit:** F65043

**Wrenches:** 7/8"

**Drill Bits:** None



**FIGURE 2**

**FIGURE 1**

①	Qty. (4)	Hex Bolt, 1/2"-13 x 6"	⑤	Qty. (4)	Spacer, 1-1/2" x 2" x 1/4"
②	Qty. (2)	Conical Washer, 1/2"	⑥	Qty. (2)	Lock Washer, 1/2"
③	Qty. (2)	Tubular, Spacer	⑦	Qty. (4)	Hex Nut, 1/2"
④	Qty. (4)	Flat Washer, 1/2"			

1. Raise receiver into position and select attaching holes in side brackets to allow for fascia clearance.
2. Place conical toothed washers and tubular spacers onto hex bolts and position into round holes in vehicle frame rails as shown in Figure 1.
3. Tubular spacers must be positioned to rest on the edges of the holes in the vehicle frame rails. See Figure 2.
4. Insert hex bolts through flat washers and the square holes in vehicle frame rails. Place 1-1/2" x 2" x 1/4" blocks between the inside surface of the frame rails and the receiver side brackets.
5. Install flat washers, lock washers and hex nuts on the forward attachments and 1-1/2" x 2" x 1/4" blocks and hex nuts on the rearward attachments.

Tighten all 1/2" GR5 fasteners with torque wrench to 75 Lb.-Ft (102 N-m).

**Qequent**

